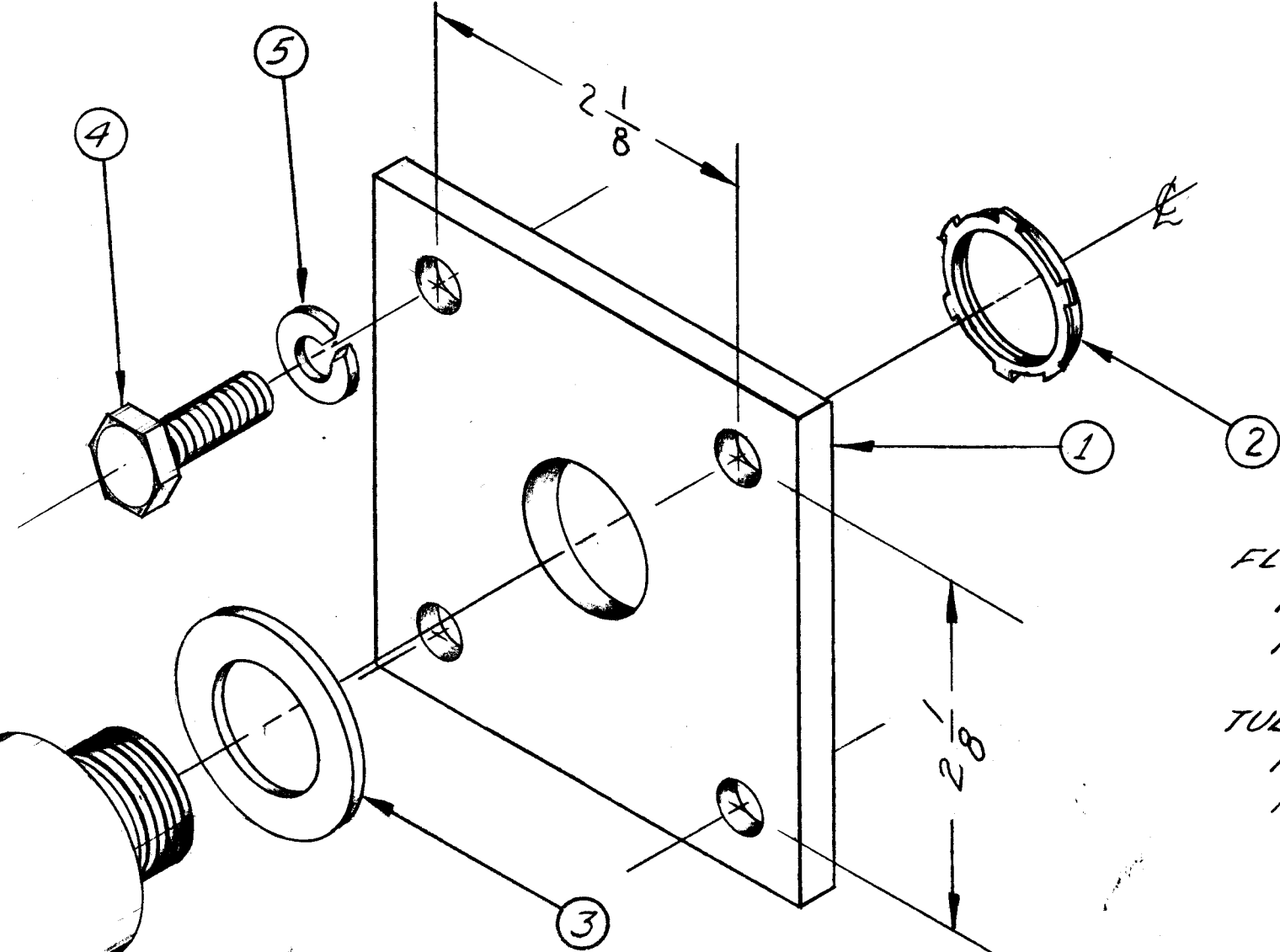
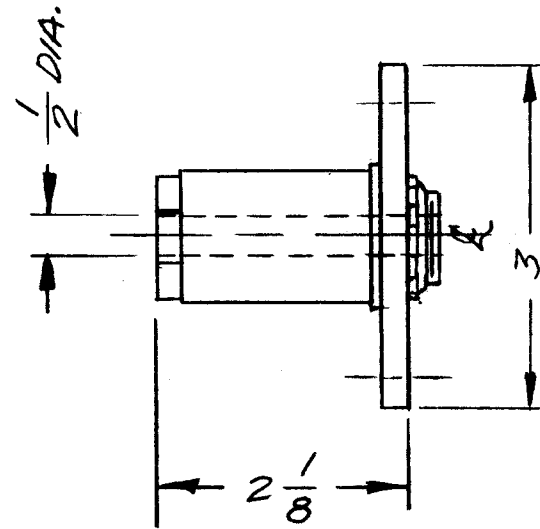


AX-310
A

THE CONTENTS OF THIS DRAWING ARE THE EXCLUSIVE PROPERTY OF THE TECHNICAL MATERIEL CORP. ITS UNAUTHORIZED USE OR REPRODUCTION IN WHOLE OR IN PART IS STRICTLY FORBIDDEN.



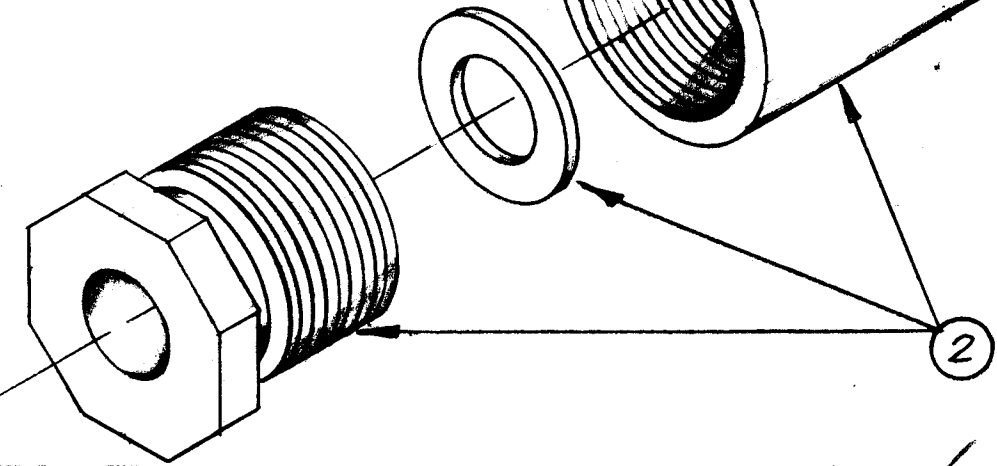
NOTICE TO PERSONS RECEIVING THIS DRAWING

THE TECHNICAL MATERIEL CORPORATION claims proprietary right in the material disclosed hereon. This drawing is issued in confidence for engineering information only and may not be reproduced or used to manufacture anything shown hereon without permission from THE TECHNICAL MATERIEL CORPORATION to the user. This drawing is loaned for mutual assistance and is subject to recall at any time.

Property of:
THE TECHNICAL MATERIEL CORPORATION
MAMARONECK, NEW YORK

FLANGE:
MATERIAL - ALUMINUM
FINISH - YEL. IRIDITE

TUBE:
MATERIAL - ALUMINUM
FINISH - TMC SMOOTH
GRAY ENAMEL



4	5	LWS25HSS	LOCKWASHER, SPLIT	
4	4	SCHH25205516	SCREW, MACHINE	
1	3	GA-117	GASKET NEOPRENE	
1	2	PO-206-2	TERMINAL TUBE, THREADED NIPPLE	
1	1	PM-695	FLANGE, MOUNTING	

REQ. ITEM	PART NO.	DESCRIPTION	SYMBOL
X		THE TECHNICAL MATERIEL CORP.	
X		MAMARONECK, NEW YORK	
X		1/2" STUFFING TUBE	
X		ASSEMBLY	
X	X	WR	Joe
TYPE & TEMPER		HEAT TREAT. SPEC.	DRAWN
X			CHECKED
FINISH & SPEC. NO.		ELEC. DES. APP.	MECH. DES. APP.
			BP
			AX-310
			A

A	ITEM 5 WAS LWS25HBN, 2 WAS PO-206 ITEM 3 DESCRIPTION WAS GASKET (MODIFIED GA-100)	8-17-62	1076	G.S.	Joe	LB
SYM	DESCRIPTION	DATE	CH. NO.	DRAFTS	CHECKER	ENG. APP.
UNLESS OTHERWISE SPECIFIED:		SCALE:				
DIMENSIONS ARE IN INCHES		MAXIMUM ALLOWABLE TOLERANCES HAVE BEEN DETERMINED AND ANY DEVIATIONS WILL BE CAUSE FOR REJECTION.				
TOLERANCES ON FRACTIONS ± 1/64 DECIMALS ± .005 ANGLES ± 1/2°		REMOVE ALL BURRS AND SHARP EDGES				
REQ. PER UNIT	MODEL	SECTION	ASS'Y. NO.	DATE	USED ON	