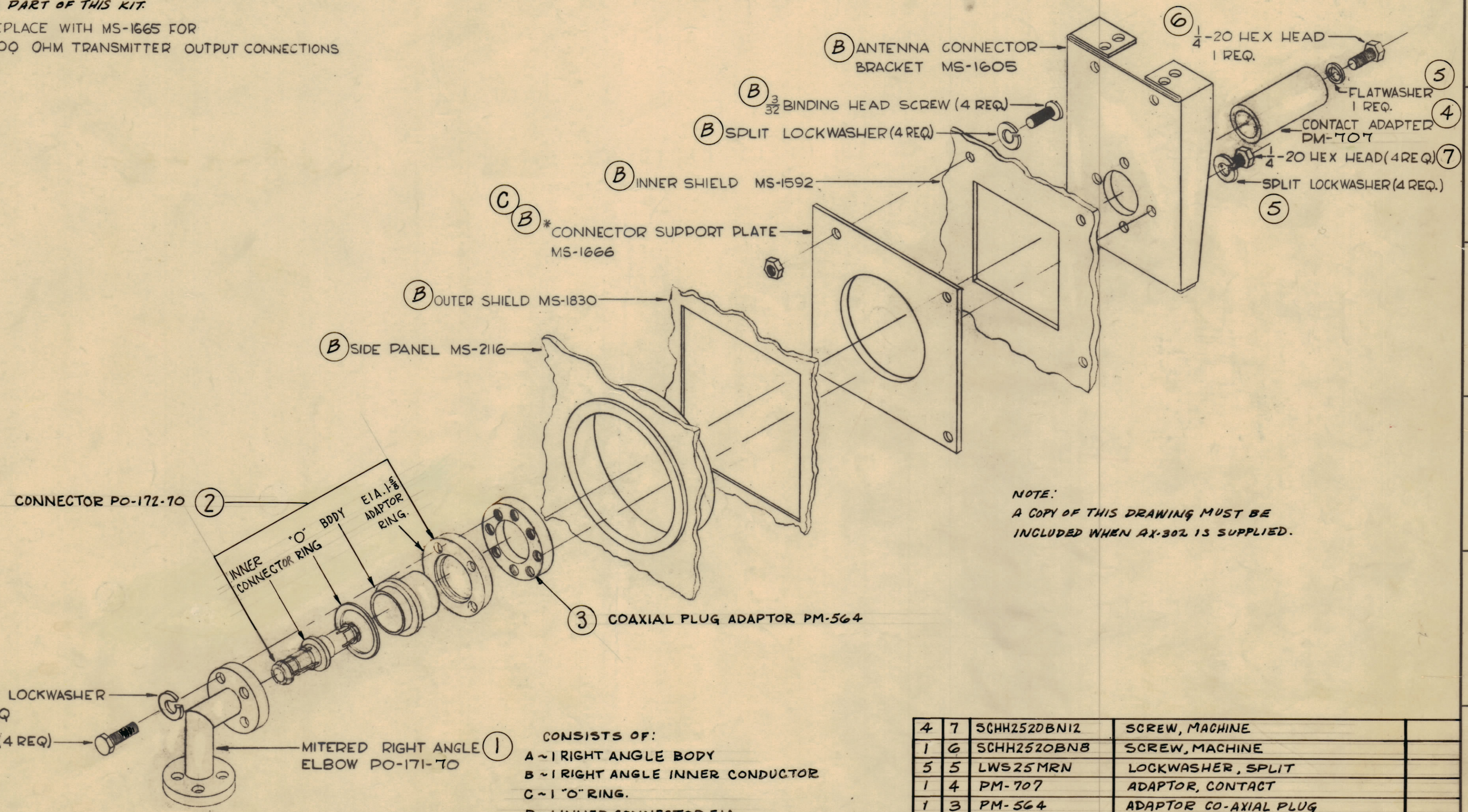


NOTICE TO PERSONS RECEIVING THIS DRAWING  
 THE TECHNICAL MATERIEL CORPORATION claims proprietary right in the material disclosed hereon. This drawing is issued in confidence for engineering information only and may not be reproduced or used to manufacture anything shown hereon without permission from THE TECHNICAL MATERIEL CORPORATION to the user. This drawing is loaned for mutual assistance and is subject to recall at any time.  
 Property of:  
 THE TECHNICAL MATERIEL CORPORATION  
 MAMARONECK, NEW YORK

NOTES:  
 A - HARDWARE PART OF ITEM (1).  
 B - PART OF TRANSMITTER NOT SUPPLIED AS PART OF THIS KIT.  
 C - \*REPLACE WITH MS-1665 FOR 600 OHM TRANSMITTER OUTPUT CONNECTIONS



NOTE:  
 A COPY OF THIS DRAWING MUST BE INCLUDED WHEN AX-302 IS SUPPLIED.

CONSISTS OF:  
 A - 1 RIGHT ANGLE BODY  
 B - 1 RIGHT ANGLE INNER CONDUCTOR  
 C - 1 "O" RING.  
 D - 1 INNER CONNECTOR EIA.  
 E - 4 SPLIT LOCKWASHERS  
 F - 4 5/16" HEX. HEAD SCREWS.

REQ.	ITEM	PART NO.	DESCRIPTION	SYMBOL
4	7	SCHH252DBN12	SCREW, MACHINE	
1	6	SCHH2520BN8	SCREW, MACHINE	
5	5	LWS25MRN	LOCKWASHER, SPLIT	
1	4	PM-707	ADAPTOR, CONTACT	
1	3	PM-564	ADAPTOR CO-AXIAL PLUG	
1	2	PO-172-70	FLANGE, SOFT SOLDER	
1	1	PO-171-70	CONNECTOR, ELECTRICAL	
THE TECHNICAL MATERIEL CORP. MAMARONECK, NEW YORK				
PLATE, CONNECTOR ASSEMBLY (70 OHM) FOR 1 5/8 HELIAX CABLE				
G. Goldberg		RUTZ		SPM
DRAWN		CHECKED		FINAL APPROVAL
ELEC. DES. APP.		MECH. DES. APP.		SHEET OF
		AX-302		A

SYM	ZONE	DESCRIPTION	DATE	CH. NO.	DRAFTS	CHECKER	ENG. APP.
A	B2	ITEMS (1) THRU (7) & NOTES ADDED	11-28-62	7735	af	JW	

UNLESS OTHERWISE SPECIFIED:  
 DIMENSIONS ARE IN INCHES  
 TOLERANCES ON FRACTIONS ± 1/64 DECIMALS ± .005 ANGLES ± 1/2°

SCALE (A)

MAXIMUM ALLOWABLE TOLERANCES HAVE BEEN DETERMINED AND ANY DEVIATIONS WILL BE CAUSE FOR REJECTION. REMOVE ALL BURRS & SHARP EDGES

REQ. PER UNIT	MODEL	SECTION	ASS'Y. NO.	DATE
				1-13-62