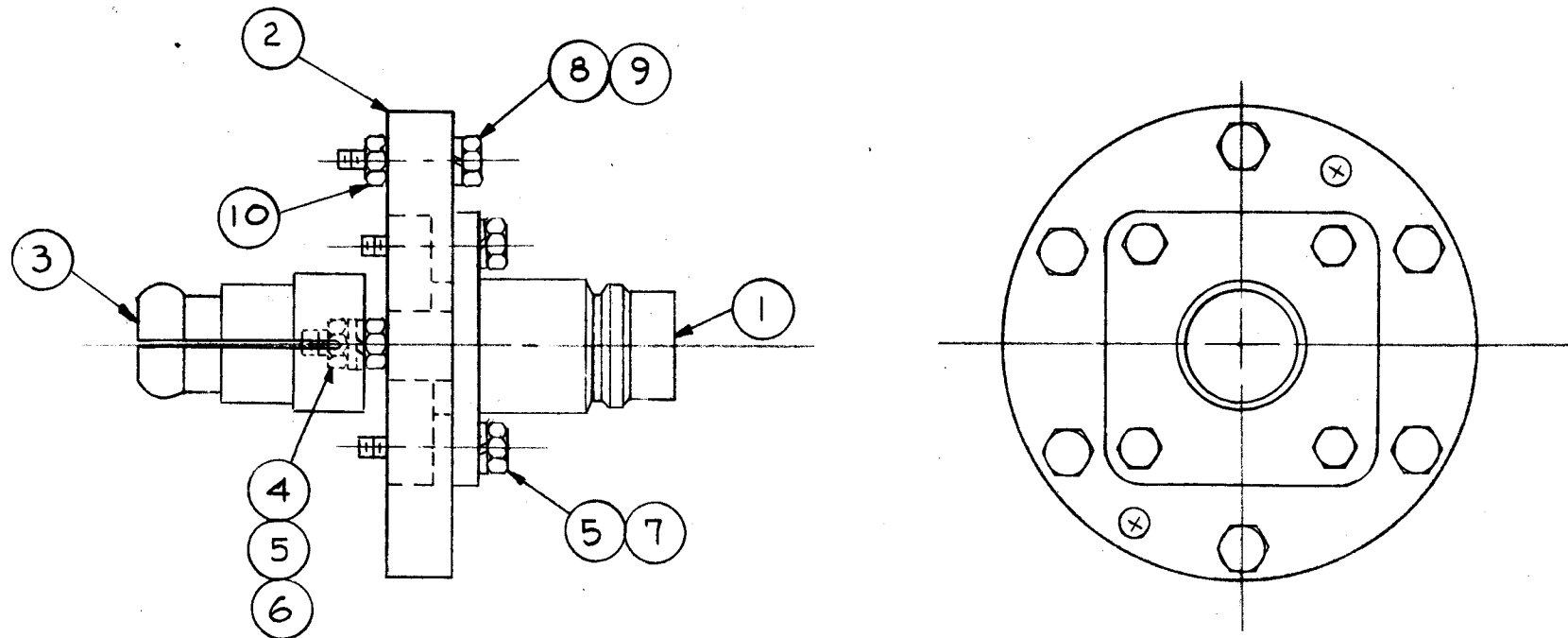


AX-300

THE CONTENTS OF THIS DRAWING ARE THE EXCLUSIVE PROPERTY OF THE TECHNICAL MATERIEL CORP. ITS UNAUTHORIZED USE OR REPRODUCTION IN WHOLE OR IN PART IS STRICTLY FORBIDDEN.



NOTICE TO PERSONS RECEIVING THIS DRAWING

THE TECHNICAL MATERIEL CORPORATION claims proprietary right in the material disclosed hereon. This drawing is issued in confidence for engineering information only and may not be reproduced or used to manufacture anything shown hereon without permission from THE TECHNICAL MATERIEL CORPORATION to the user. This drawing is loaned for mutual assistance and is subject to recall at any time.

Property of:
THE TECHNICAL MATERIEL CORPORATION
MAMARONECK, NEW YORK

6	10	NTH3118BN16	NUT, HEX	
6	9	LW531MRN	LOCKWASHER, SPLIT	
6	8	SCHH3118BN32	BOLT, MACHINE	
4	7	SCHH2520BN8	BOLT, MACHINE	
1	6	NTH2528BN14	NUT, HEX	
5	5	LW525MRN	LOCKWASHER, SPLIT	
1	4	FW25HBN	WASHER, FLAT	
1	3	PO-203-50	CONNECTOR, INNER, 50 OHM	
1	2	PM-722	ADAPTOR 3 1/8 EIA	
1	1	JJ-225	CONNECTOR, RECEPTACLE QDL	

REQ.	ITEM	PART NO.	DESCRIPTION	SYMBOL
			THE TECHNICAL MATERIEL CORP. MAMARONECK, NEW YORK	
			ASSEMBLY, ADAPTOR, QDL	
			50 OHM	
			A. G.	RUZZO
			DRAWN	CHECKED
			FINAL APPROVAL	
			BB	AK
			AX-300	

SYM	DESCRIPTION	DATE	CH. NO.	DRAFTS	CHECKER	ENG. APP.
UNLESS OTHERWISE SPECIFIED:						
DIMENSIONS ARE IN INCHES						
TOLERANCES ON FRACTIONS ± 1/64 DECIMALS ± .005 ANGLES ± 1/2°						
SCALE: MAXIMUM ALLOWABLE TOLERANCES HAVE BEEN DETERMINED AND ANY DEVIATIONS WILL BE CAUSE FOR REJECTION. REMOVE ALL BURRS AND SHARP EDGES						
REQ. PER UNIT	MODEL	SECTION	ASS'Y. NO.	DATE		
				12-6-61		
USED ON						