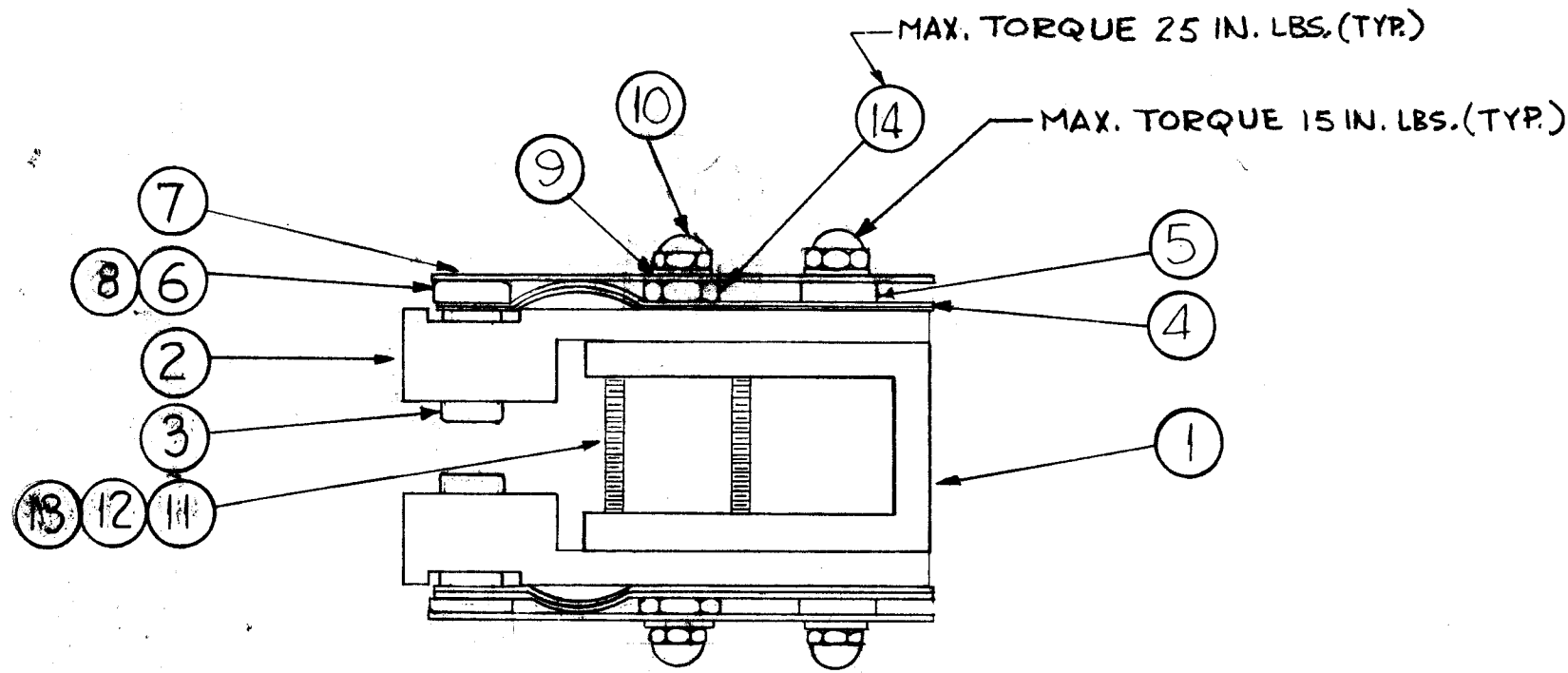


AX-267 F



**NOTE:**  
ASSEMBLE FOR SPARE PARTS USE ONLY.

NOTICE TO PERSONS RECEIVING THIS DRAWING

THE TECHNICAL MATERIEL CORPORATION claims proprietary right in the material disclosed hereon. This drawing is issued in confidence for engineering information only and may not be reproduced or used to manufacture anything shown hereon without permission from THE TECHNICAL MATERIEL CORPORATION to the user. This drawing is loaned for mutual assistance and is subject to recall at any time.

Property of:

THE TECHNICAL MATERIEL CORPORATION  
MAMARONECK, NEW YORK

4	14	NTH1032BP12	NUT, HEX SILVER PLATED	
4	13	SCBP0440BP16	SCREW, MACHINE, BINDER HEAD	
4	12	LWS04MRP	Lockwasher, Split	
4	11	NTH0440BP6	Nut, Hex	
8	10	NTC1032BPL	Nut, Cap	
8	9	FW 10HBP	Washer, Flat	
4	8	SCFD1032BP8	SCREW, MACHINE, FLAT HEAD	
4	7	MS-2630-1	SPRING, PRESSURE, BANDSWITCH	
4	6	PM-704	Spacer	
2	5	PM-699	Bar-Tie-Down	
8	4	MS-2629-1	Contacts	
4	3	PM-702	Slug, Contact	
2	2	PM-700	Holder, Contact	
1	1	PM-598-2	Bracket, Wafer	

F	USED ON CHART UPDATED ITEM (13) WAS SCBP0440BN16 ITEM (12) WAS LWS04MRN ITEM (11) WAS NTH0440BN6	12/23/63	10/6/62					
E	ITEM (8) WAS SCFD1032BN8	2-9-63	8135					
D	TORQUE WAS "IN. OZ." NOTE ADDED ITEM (10) WAS NTC1032BPL; (9) WAS FW10HBP	1-5-63	7954					
C	TORQUE NOTES ADDED	11-30-62	7733					
B	ITEM (5) QUAN. WAS 4, ITEM (9) WAS LWT10MRN, ITEM (4) ADDED	8-24-62	7132					
A	ITEM (3) WAS SCBS0440BN16, ITEM (1) WAS PM-700 ITEM (4) WAS MS-2629-1, ITEM (8) WAS SCFD1032BN8	2-2-62	6314					
SYM	DESCRIPTION	DATE	CH. NO.	DRAFTS	CHECKER	ENG. APP.		

UNLESS OTHERWISE SPECIFIED:  
DIMENSIONS ARE IN INCHES  
TOLERANCES ON FRACTIONS ± 1/64 DECIMALS ± .005 ANGLES ± 1/2°  
SCALE: MAXIMUM ALLOWABLE TOLERANCES HAVE BEEN DETERMINED AND ANY DEVIATIONS WILL BE CAUSE FOR REJECTION. REMOVE ALL BURRS AND SHARP EDGES

8	GPT-40K(1)4	AS-125	AX-266	12-23-63
8	GPT-40K			8-22-61
REQ. PER UNIT	MODEL	SECTION	ASS'Y. NO.	DATE
	USED ON			

REQ.	ITEM	PART NO.	DESCRIPTION	SYMBOL
THE TECHNICAL MATERIEL CORP. MAMARONECK, NEW YORK				
CONTACT ASS'Y.				
MATERIAL				
STOCK SIZE				
FINISH & SPEC. NO.				
TYPE & TEMPER		HEAT TREAT. SPEC.		FINISH & SPEC. NO.
DRAWN		CHECKER		FINAL APPROVAL
LB		Jhe		AX-267 F