

REQ. PER. UNIT	MODEL	USED ON	ASSY. NO.	DATE
1	40K		AT-101	5-2-61
1	40K		AT-102	5-2-61

AX-257 A

- ASSY CONSISTS OF:
- (1) CONTACT, SWITCH
 - (2) FW25HBN, Flatwasher
 - (2) LWS25MRN, Lockwasher (SPLIT)
 - (2) NTH25ZOBNI4, Hex. Nut

MATERIAL

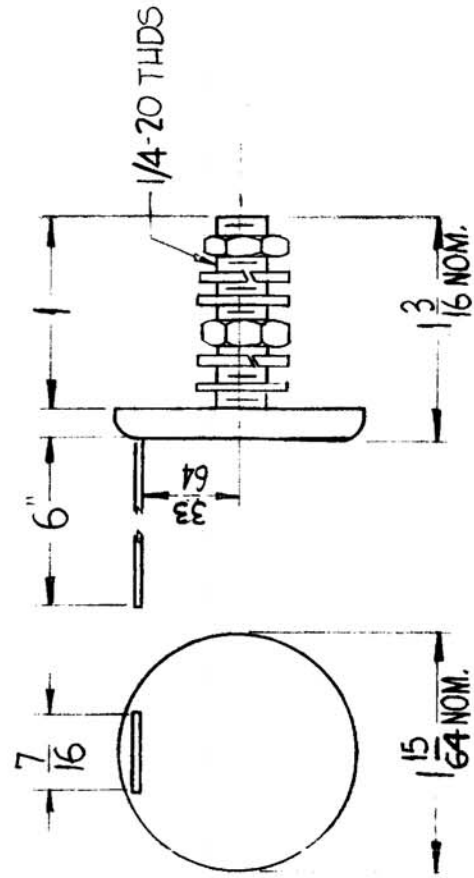
CONTACT - Brass, Rhodium Plated
 STRAP - Copper, Rhodium Plated
 HARDWARE - Brass, Nickel Plated

NOTICE TO PERSONS RECEIVING THIS DRAWING

THE TECHNICAL MATERIEL CORPORATION claims proprietary right in the material disclosed hereon. This drawing is issued in confidence for engineering information only and may not be reproduced or used to manufacture anything shown hereon without permission from THE TECHNICAL MATERIEL CORPORATION to the user. This drawing is loaned for mutual assistance and is subject to recall at any time.

Property of:

THE TECHNICAL MATERIEL CORPORATION
 MAMARONECK, NEW YORK



REG. ITEM	PART NO.	DESCRIPTION	SYMBOL
		THE TECHNICAL MATERIEL CORP. MAMARONECK, NEW YORK	
		CONTACT, ELECTRICAL SWITCH	
ISSUE ITEM	CHANGED FROM		
A 1	FW25HBN, LWS25MRN, NTH25ZOBNI4, 1 was Req.		
DATE	CH. NO.	DRAFTS	CHECKER
10-31-61	5789	14	RU 16
SCALE:		1A-2098	
TOLERANCES			
MAXIMUM ALLOWABLE TOLERANCES HAVE BEEN DETERMINED AND ANY DEVIATIONS WILL BE CAUSE FOR REJECTION. REMOVE ALL BURRS AND SHARP EDGES			
DEC. DIM. ±	FRAC. DIM. ±	FINAL APPROVAL	
ANGULAR DIM. ±		DRAWN	CHECKED
		ELEC. DES. APP. MECH. DES. APP.	
			AX-257 A