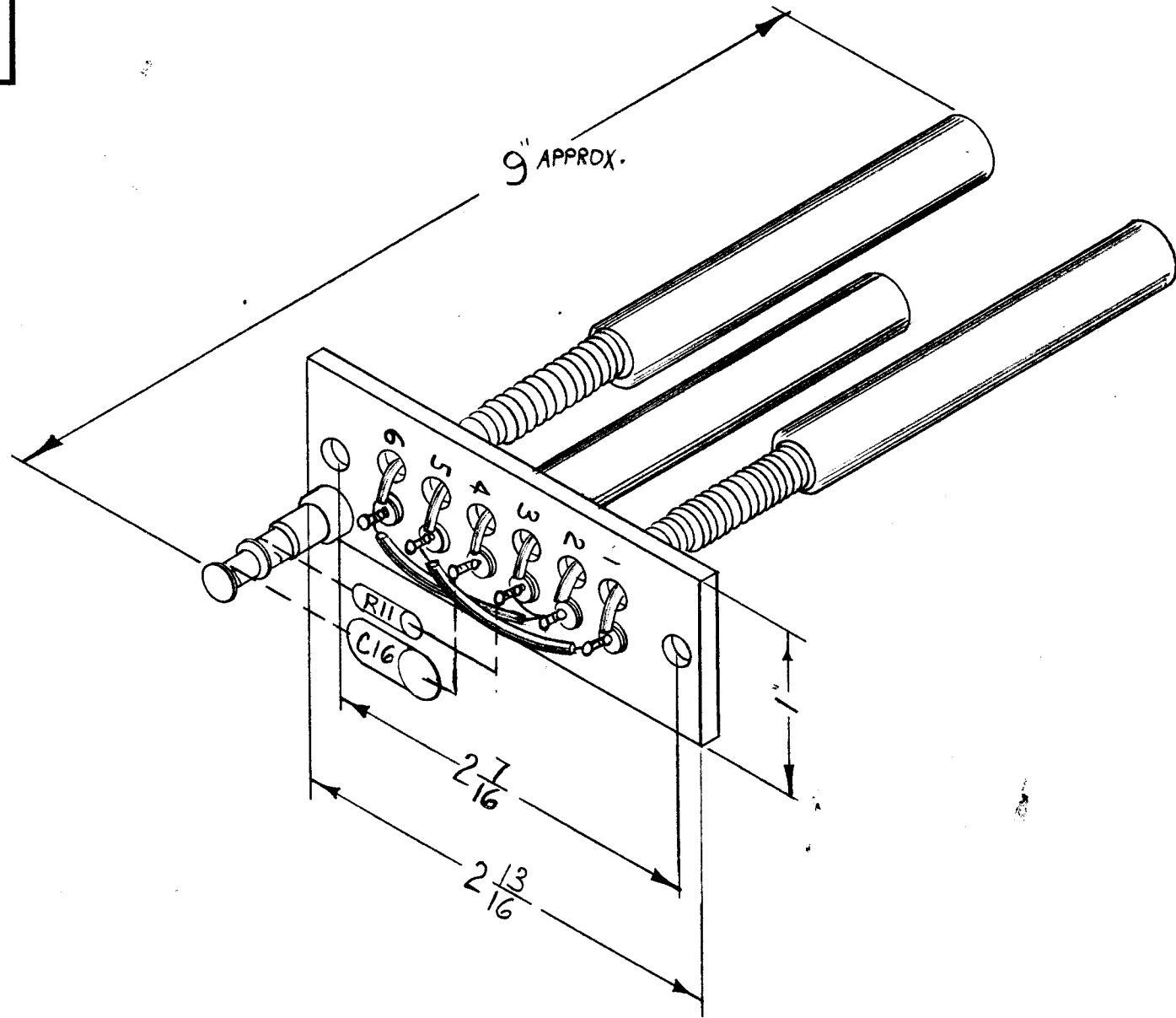
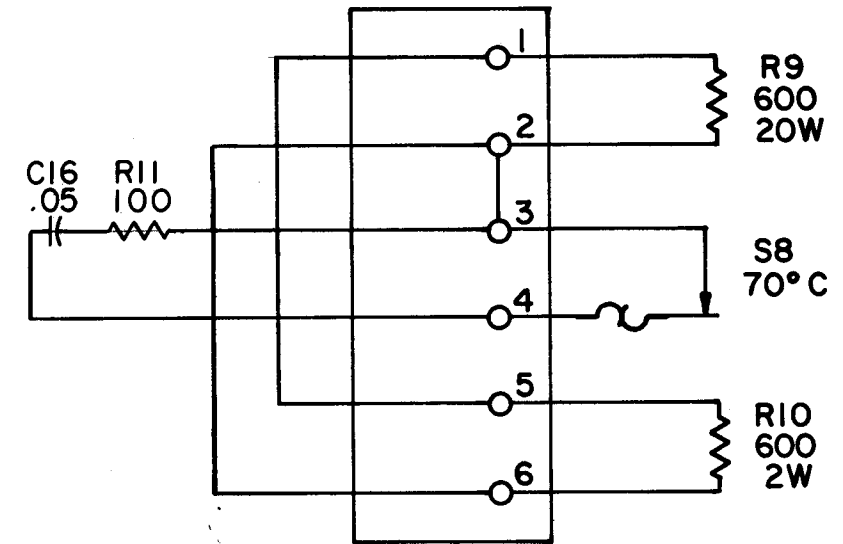


D  
AX 242

FOR SPARE PARTS  
USE ONLY



- ASSEMBLY CONSISTS OF:
- 1 TERMINAL BOARD WITH 6 LUGS, 1/8 THK. PHENOLIC.
  - 2 HEATING ELEMENTS, TMC NO. RR-102-1, SYMBOL R9 & R10.
  - 1 BI-METALLIC SWITCH, TMC NO. SS-100-2, SYMBOL S8.
  - 1 RESISTOR, TMC NO. RC 20GF330J, SYMBOL R11.
  - 1 CAPACITOR, TMC NO. CC100-32, SYMBOL C16 AND ASSOCIATED WIRING.



SCHEMATIC DIAGRAM

SYM	DESCRIPTION	DATE	CH. NO.	DRAFTS	CHECKER	ENG. APP.
D	ADD SPARE PARTS ONLY NOTE	10/28/66	17147	RME	<i>[Signature]</i>	<i>[Signature]</i>
C	R11 WAS "101K"; C16 WAS "CN113-1"	2-7-66	15713	HLA	<i>[Signature]</i>	<i>[Signature]</i>
B	ON ASSY CONSISTS OF CN-113-1 WAS CN-100-3	4-7-61	4571	WAS	<i>[Signature]</i>	<i>[Signature]</i>
A	Schematic clarified Jumper from term 2 to 6 was from 3 to 6 R11 Lead to term. 3 was to term. 2	1-17-61	3928	RU	<i>[Signature]</i>	<i>[Signature]</i>

UNLESS OTHERWISE SPECIFIED:  
DIMENSIONS ARE IN INCHES  
TOLERANCES ON FRACTIONS ± 1/64 DECIMALS ± .005 ANGLES ± 1/2°

SCALE: 4A-2035  
MAXIMUM ALLOWABLE TOLERANCES HAVE BEEN DETERMINED AND ANY DEVIATIONS WILL BE CAUSE FOR REJECTION.  
REMOVE ALL BURRS AND SHARP EDGES

1	TIS-3			12-1-60
REQ. PER UNIT	MODEL	SECTION	ASSY. NO.	DATE
USED ON				

REQ. ITEM	PART NO.	DESCRIPTION	SYMBOL
THE TECHNICAL MATERIEL CORP. MAMARONECK, NEW YORK			
BOARD, TERMINAL ELEMENT			
MATERIAL			
TYPE & TEMPER		HEAT TREAT. SPEC.	FINISH & SPEC. NO.
<i>[Signature]</i>		<i>[Signature]</i>	<i>[Signature]</i>
DRAWN		CHECKER	FINAL APPROVAL
<i>[Signature]</i>		<i>[Signature]</i>	AX 242
ELEC. DES. APP.		MECH. DES. APP.	D