

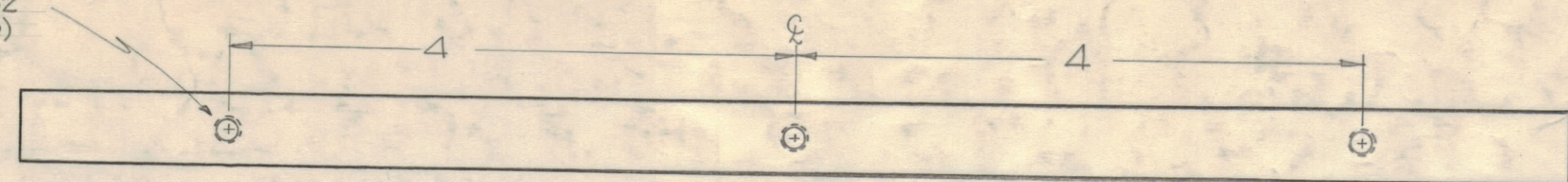
AX-230

NOTICE TO PERSONS RECEIVING THIS DRAWING

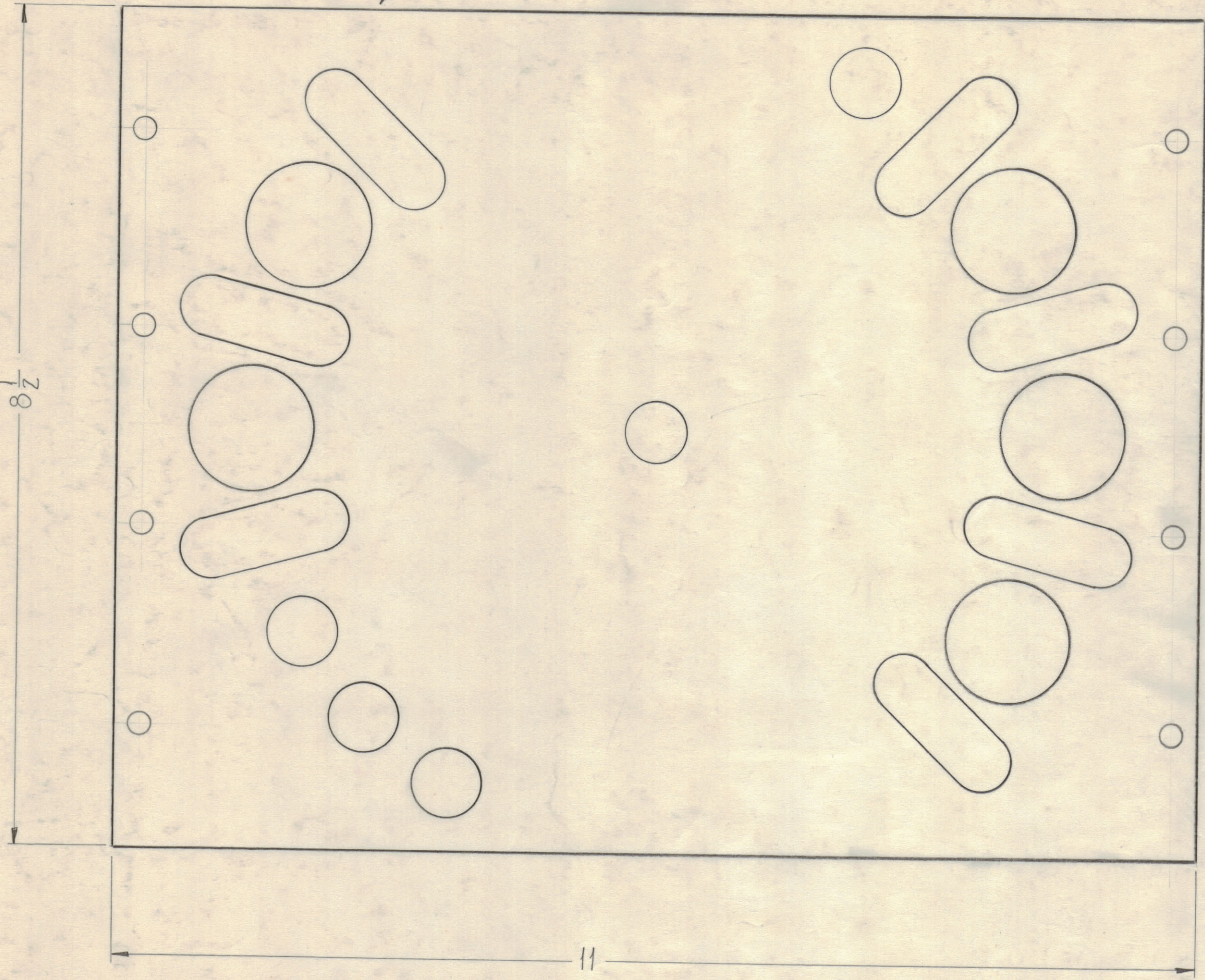
THE TECHNICAL MATERIEL CORPORATION claims proprietary right in the material disclosed herein. This drawing is issued in confidence for engineering information only and may not be reproduced or used to manufacture anything shown hereon without permission from THE TECHNICAL MATERIEL CORPORATION to the user. This drawing is loaned for mutual assistance and is subject to recall at any time.

Property of:
THE TECHNICAL MATERIEL CORPORATION
MAMARONECK, NEW YORK

DR. ETAP FOR 8-32
3/4" DEEP (3 REQ)

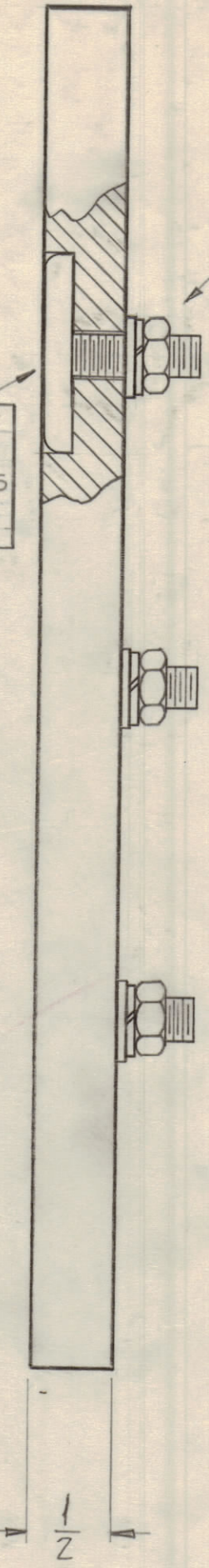


PLATE, SWITCH ANT. TUNER
MATERIAL ~ Supra-Mica 500



HARDWARE ~ FW25MBN-5 REQ.,
LW525MBN-5 REQ., NTH2520BN14-
5 REQ. MATERIAL - BRASS.

AX-233,
CONTACT, SWITCH
MATERIAL - BRASS
RHODIUM PLATE
5 REQ'D



ISSUE	ZONE	DESCRIPTION	DATE	CH. NO.	DRAFTS	CHECKER	ENG. APP.
TOLERANCES			SCALE: A-1983				
DEC. DIM. ±			MAXIMUM ALLOWABLE TOLERANCES HAVE BEEN DETERMINED AND ANY DEVIATIONS WILL BE CAUSE FOR REJECTION.				
FRAC. DIM. ±			REMOVE ALL BURRS AND SHARP EDGES				
ANGULAR DIM. ±							

REQ PER UNIT	MODEL	SECTION	ASSY. NO.	DATE
1	GPT-40K			14-17-60
1	ACU			10-19-60

REQ. ITEM	PART NO.	DESCRIPTION	SYMBOL
THE TECHNICAL MATERIEL CORP. MAMARONECK, NEW YORK			
STOCK SIZE			
MATERIAL			
TYPE & TEMPER			
HEAT TREAT. SPEC.			
FINISH & SPEC. NO.			
DRAWN		ELEC. DES. APP.	MECH. DES. APP.
CHECKED		FINAL APPROVAL	
		AX-230	