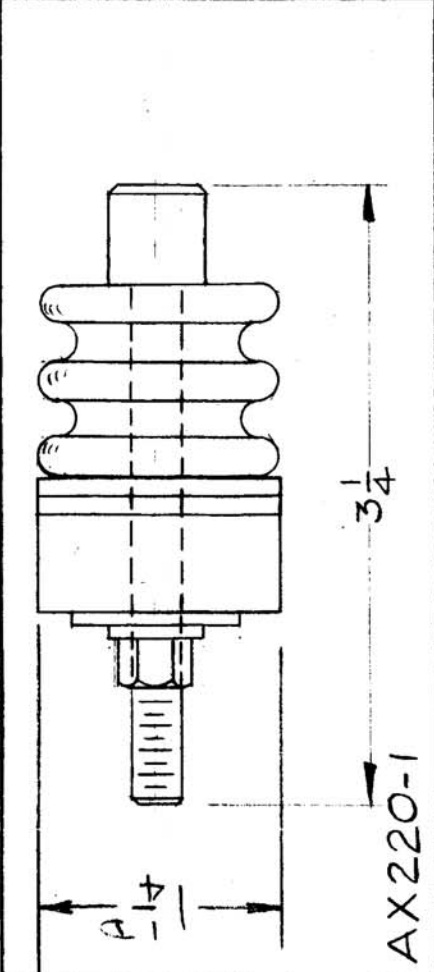
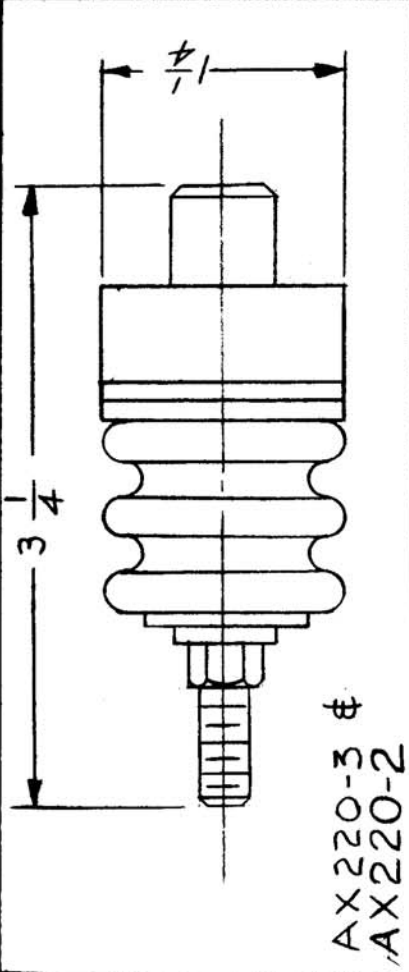


AX-220 B

REV. PER. UNIT	NO. MODEL	USED ON	APPLY. NO.	DATE
8	GPT-4OK	AP-105	3/2/60	



ASSEMBLY CONSISTS OF:
 1-STUD (W/BUTTON)
 1-STEATITE INSULATORS,
 2-NEOPRENE GASKETS,
 2-FIBER WASHERS, FLAT
 WASHER AND HEX NUT
 1-SPACER

REQ. ITEM	ITEM	PART NO.	DESCRIPTION	SYMBOL
			THE TECHNICAL MATERIEL CORP. MAMARONECK, NEW YORK	
B			FEED - THRU, INSULATED	
A				
ISSUE ITEM	CHANGED FROM	DATE	CH. NO.	DRAFTS
		6/12/64	11520	A.M.
		9-22-66	16862	RME
				23
				23
				1A-184
TOLERANCES				
SCALE: 1/2" = 1"				
MAXIMUM ALLOWABLE TOLERANCES HAVE BEEN DETERMINED AND ANY DEVIATIONS WILL BE CAUSE FOR REJECTION. REMOVE ALL BURRS AND SHARP EDGES				
DEC. DIM. ±				
FRAC. DIM. ±				
ANGULAR DIM. ±				
			CY	CHKD
			DRAWN	CHECKED
			TYPE & TEMPER	HEAT TREAT. SPEC.
			MATERIAL	
			STOCK SIZE	
			FINISH & SPEC. NO.	
			ELEC. DES. APP	MECH. DES. APP
			AX-220	B
			FINAL APPROVAL	