

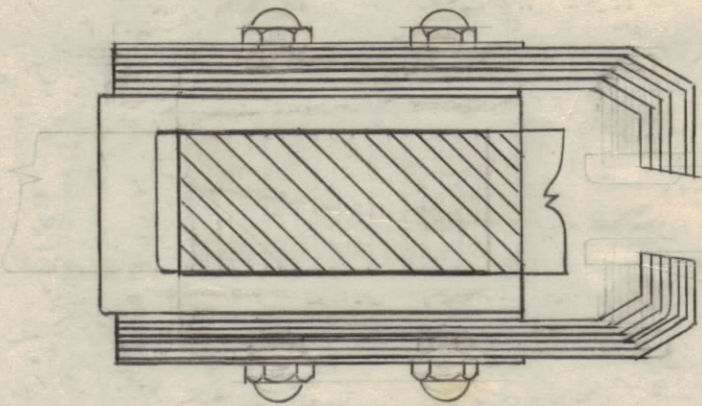
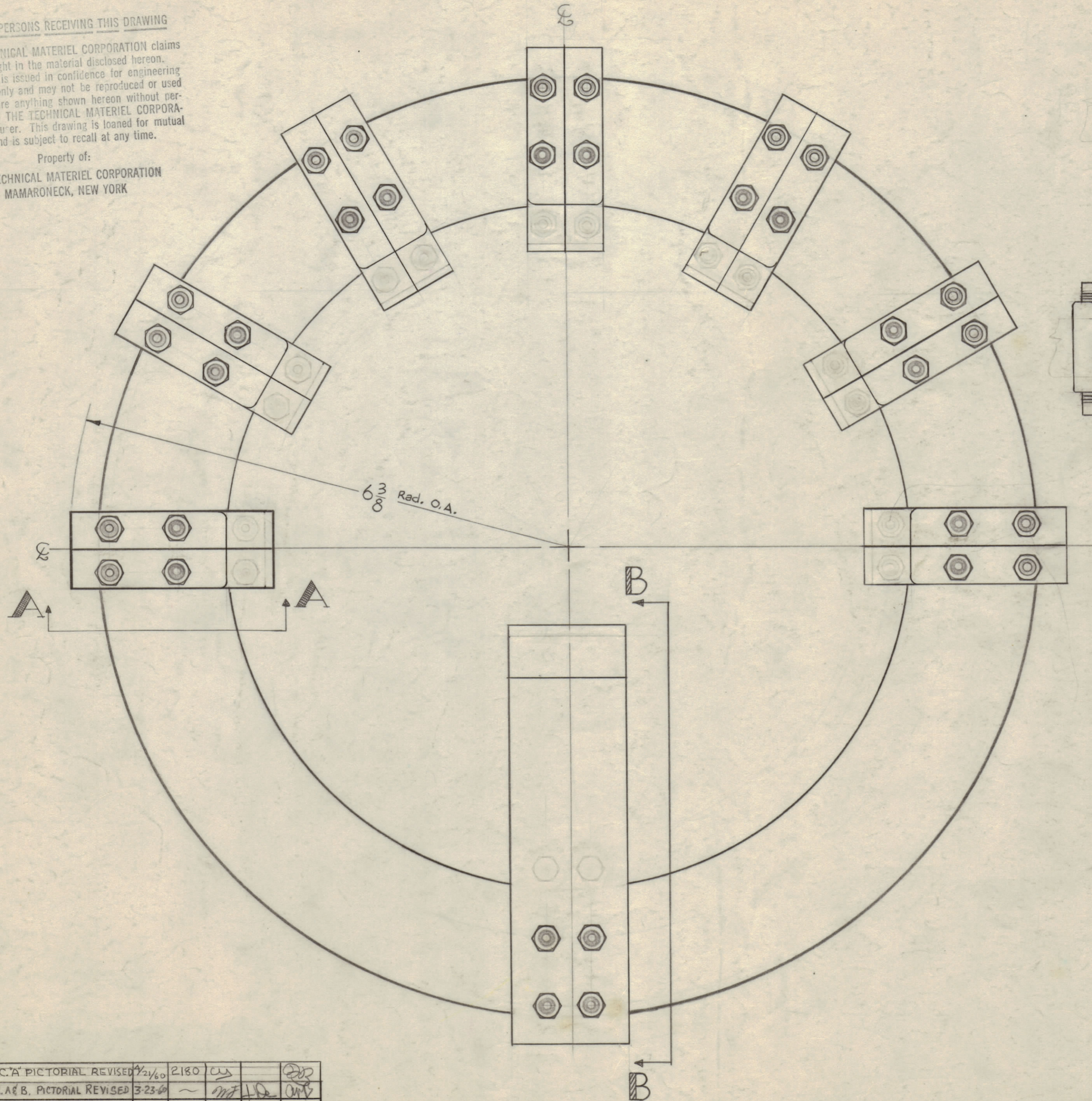
IF IT IS FOUND DESIRABLE TO CHANGE ANY TOLERANCE OR OTHER DETAIL SPECIFIED ON THIS DRAWING NOTIFY THE PURCHASER PROMPTLY.

MAXIMUM ALLOWABLE TOLERANCES HAVE BEEN DETERMINED AND DEVIATIONS WILL BE CAUSE FOR REJECTION. REMOVE ALL BURRS AND SHARP EDGES.

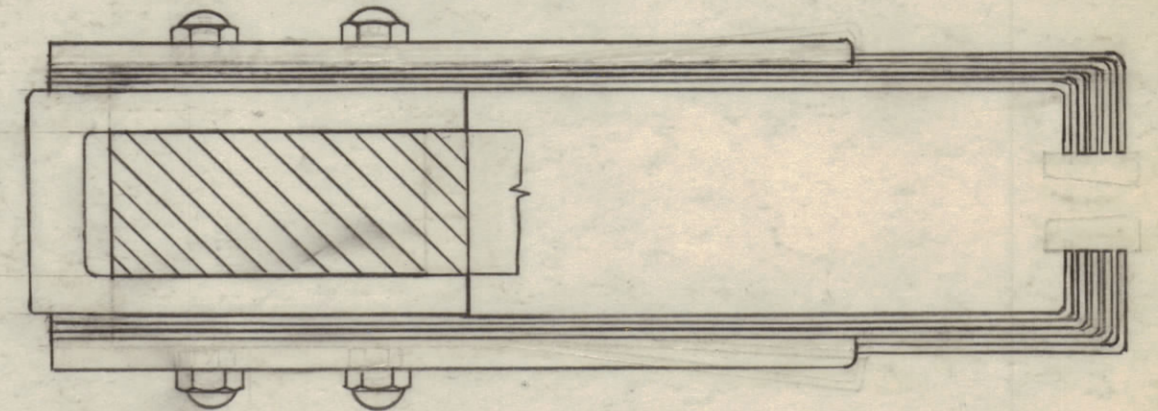
NOTICE TO PERSONS RECEIVING THIS DRAWING

THE TECHNICAL MATERIEL CORPORATION claims proprietary right in the material disclosed hereon. This drawing is issued in confidence for engineering information only and may not be reproduced or used to manufacture anything shown hereon without permission from THE TECHNICAL MATERIEL CORPORATION to the user. This drawing is loaned for mutual assistance and is subject to recall at any time.

Property of:  
THE TECHNICAL MATERIEL CORPORATION  
MAMARONECK, NEW YORK



SECTION A~A



SECTION B~B

AX-217 B

~ SPECIFICATIONS ~  
INSULATION-SUPRA MICA 500  
CONTACTS-RHODIUM PLATED ON SILVER  
PLATED BERYLIUM COPPER  
VOLT RATING -15000 VAC  
CURRENT - 250 AMPS

B	1	SEC. A PICTORIAL REVISED	4-21-60	2180	cy		
A	1	SEC. A & B PICTORIAL REVISED	3-23-60				
ISSUE	ITEM	CHANGED FROM	DATE	CH. NO.	DRAFTS	CHECKER	ENG. APP.
TOLERANCES			SCALE: A-1904				
ALL OTHERS	DEC. DIM. ± FRAC. DIM. ± 1/64 ANGULAR DIM. ±		DRILL, PUNCH, COMMERCIAL STOCK SIZES AND MANUFACTURERS TOLERANCES ARE NOT INCLUDED.				

1	GPT-40K	AX-209		2-29-60
REQ. PER UNIT	MODEL	PROJECT NO.	ASSY. NO.	DATE
USED ON				

REQ. ITEM	PART NO.	DESCRIPTION	SYMBOL
		THE TECHNICAL MATERIEL CORP. MAMARONECK, NEW YORK	
STOCK SIZE			
		WAFER, PA BANDSWITCH, ASSEMBLY	
MATERIAL	WEIGHT PER PC.		
TYPE & TEMPER			
HEAT TREAT. SPEC.			
FINISH & SPEC. NO.			
		DRAWN	ELEC. DES. APP.
		CHECKED	MECH. DES. APP.
		FINAL APPROVAL	
		AX-217 B	