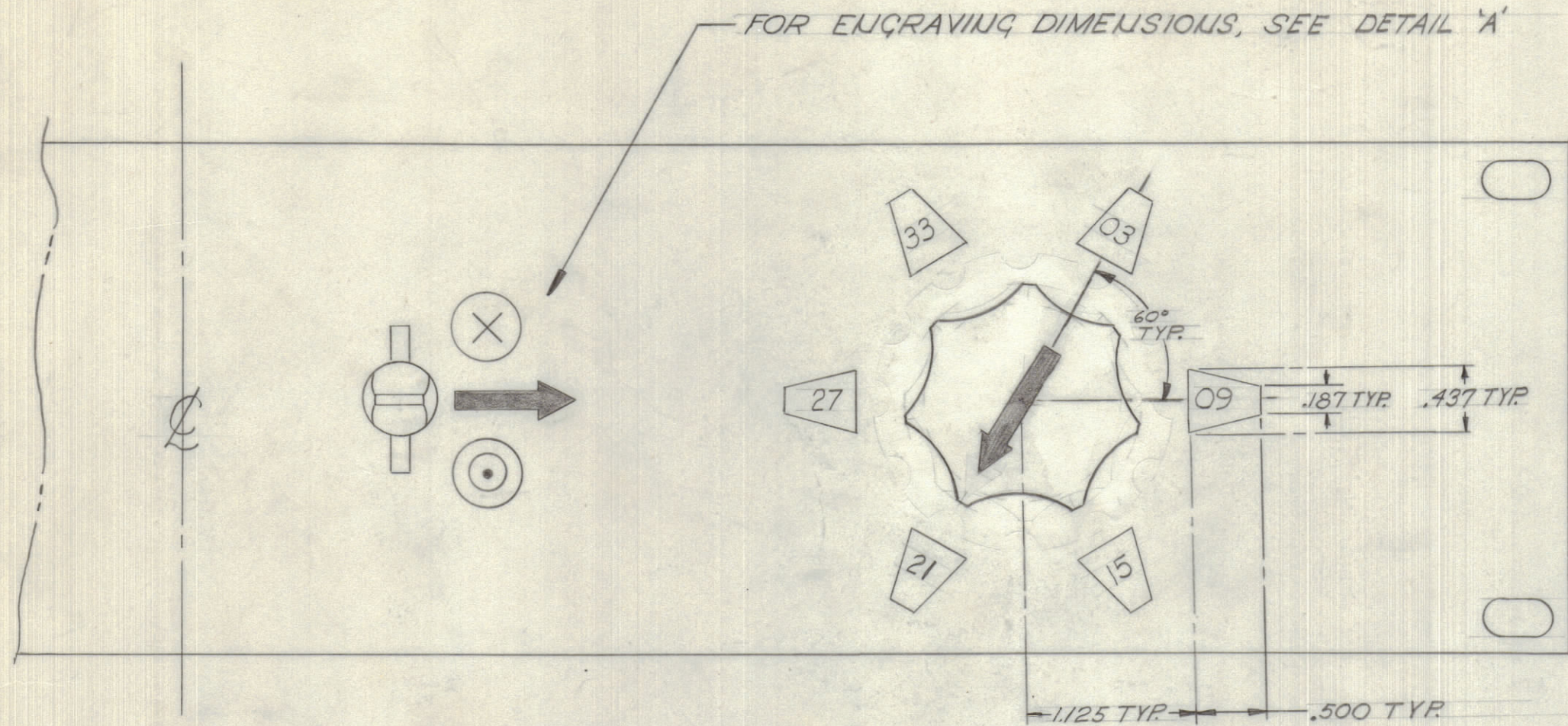


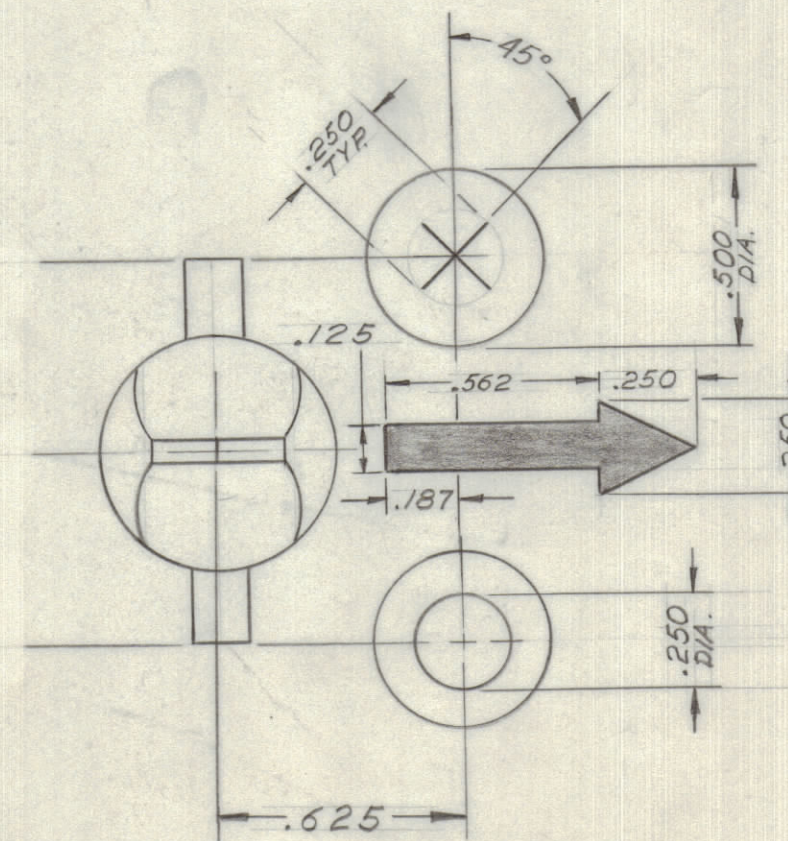
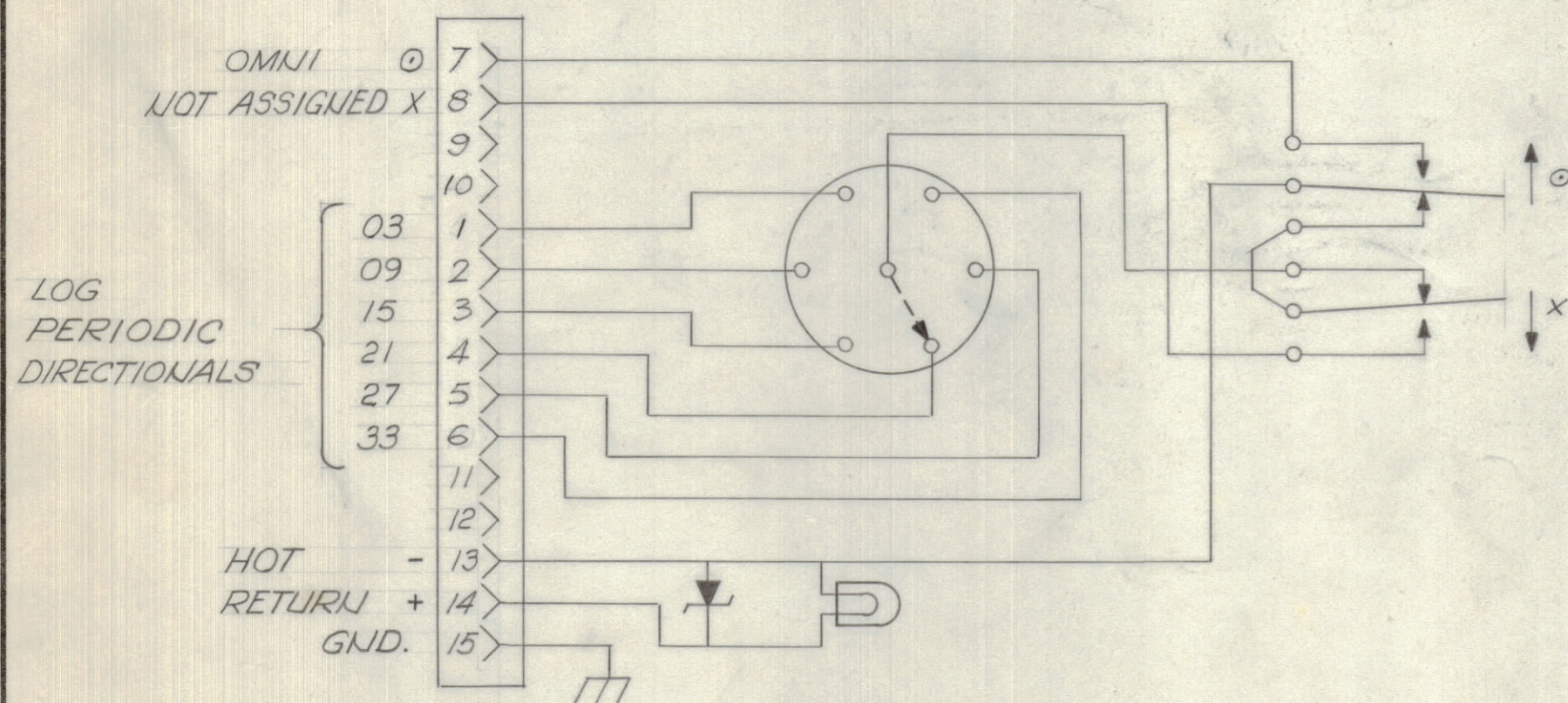
IF IT IS FOUND DESIRABLE TO CHANGE ANY TOLERANCE OR OTHER DETAIL SPECIFIED ON THIS DRAWING NOTIFY THE PURCHASER PROMPTLY.				DIMENSIONS IN INCHES UNLESS OTHERWISE SPECIFIED			
MAXIMUM ALLOWABLE TOLERANCES HAVE BEEN DETERMINED AND DEVIATIONS WILL BE CAUSE FOR REJECTION. REMOVE ALL BURRS AND SHARP EDGES.							
ISSUE	ITEM	CHANGED FROM	DATE	CN. NO.	DRAFTS	CHECKER	ENG. APP.
X ₁		ENQ RELEASE	14 AUG 72			C.C.	

REQ.	ITEM	PART NO.	DESCRIPTION	SYMBOL
------	------	----------	-------------	--------



NOTES

1. ROTARY SWITCH, ONE POLE, SIX POSITION NON-SHORTING, 60° POSITIVE INDEXING, CONTINUOUS ROTATION, CERAMIC WAFER, CENTRALAB TYPE PA 2043 OR EQUIVALENT.
2. KNOB OF ROTARY SWITCH 2" DIA., WITH LARGE VERY EASILY SEEN ARROW.
3. PANEL MARKINGS FOR ROTARY SWITCH: TRUNCATED TRIANGLES REPRESENT SHAPE AND ORIENTATION, AND NUMBERED TO INDICATE AZIMUTH, OF LOG PERIODIC ANTENNA SELECTED.
4. LEVER SWITCH THREE POSITION, LOCKING, WITH ONE TYPE 'C' PILE-UP EACH SIDE. SWITCHCRAFT NO. 27306 L; AUTOMATIC ELECTRIC NO. LK 4CIA OR EQUIVALENT.
5. PANEL MARKINGS FOR LEVER SWITCH.
 - UPPER X INDICATES SPARE ANTENNA,
 - MIDDLE → ARROW INDICATES ANTENNA SELECTION WITH LEVER SWITCH IN CENTRE, IS CONTROLLED BY ROTARY SWITCH.
 - LOWER ○ INDICATES 'OMNI' ANTENNA.
6. PILOT LAMP A. INTEGRAL WITH SWITCHCRAFT ILLUMINATED SWITCH (COLOUR CODED TO FURTHER INDICATE SWITCH POSITION)
 B. OTHERWISE TMC TYPE BI 101-1819 OR EQUIVALENT
 C. A DROPPING RESISTOR IF REQUIRED
 D. IN4754 ZENER, OR AS REQUIRED
7. CANNON CONNECTOR TYPE ROYAL D, OR AMPHENOL SERIES 57, OR EQUIVALENT.



DETAIL 'A'
SCALE: 2/1

ID10797 X₁

TOLERANCES		SCALE:
ALL OTHERS	DEC. DIM. ± .05 FRAC. DIM. ± 1/64 ANGULAR DIM. ± 0° 30'	DRILL, PUNCH, COMMERCIAL STOCK SIZES AND MANUFACTURERS TOLERANCES ARE NOT INCLUDED.

ACG10002	C-11366	15 FEB 72
MODEL	PROJECT NO.	DATE

TMC (Canada) LIMITED OTTAWA ONTARIO			
CF3 ALDERGROVE			
ANTENNA SELECTOR CONTROL			
THOMAS			
Practor	CHECKED	ELEC. DES. APP.	MECH. DES. APP.
HEAT TREAT. SPEC.		FINAL APPROVAL	
		AX10797 X ₁	