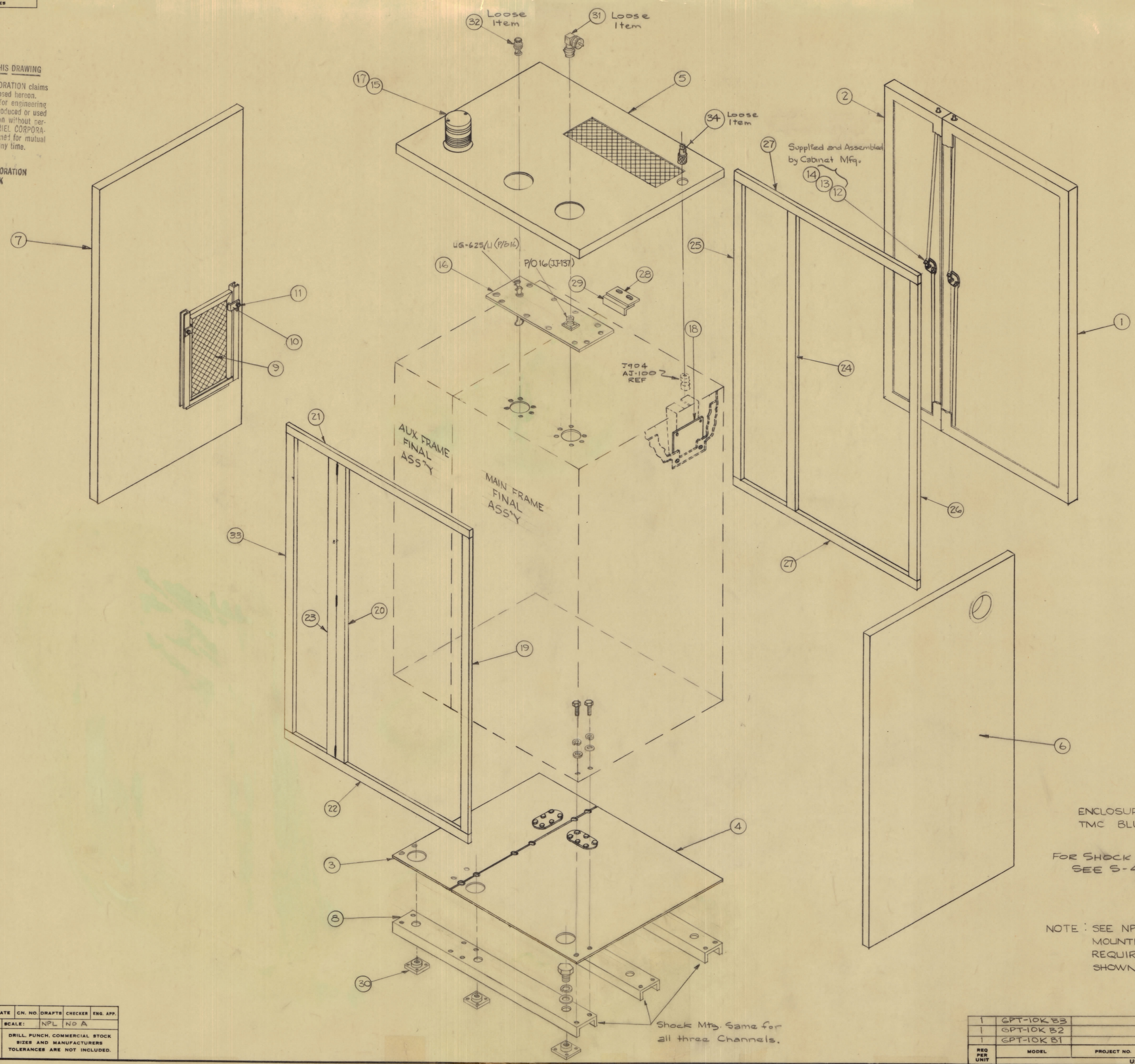


IF IT IS FOUND DESIRABLE TO CHANGE ANY TOLERANCE OR OTHER DETAIL SPECIFIED ON THIS DRAWING NOTIFY THE PURCHASER PROMPTLY.
 MAXIMUM ALLOWABLE TOLERANCES HAVE BEEN DETERMINED AND DEVIATIONS WILL BE CAUSE FOR REJECTION. REMOVE ALL BURRS AND SHARP EDGES.

NOTICE TO PERSONS RECEIVING THIS DRAWING

THE TECHNICAL MATERIEL CORPORATION claims proprietary right in the material disclosed hereon. This drawing is issued in confidence for engineering information only and may not be reproduced or used to manufacture any thing shown hereon without permission from THE TECHNICAL MATERIEL CORPORATION to the user. This drawing is loaned for mutual assistance and is subject to recall at any time.

Property of:
 THE TECHNICAL MATERIEL CORPORATION
 MAMARONECK, NEW YORK



Loose Items

REQ. ITEM	PART NO.	DESCRIPTION	SYMBOL
1	34	PL-149	Plug (For AT-100)
1	33	MS-1920	Trim, Hinged, Left, Aux.
1	32	UG-260/U	Plug
1	31	PL-142	Adapter Right Angle, Male to Female
9	30	SH-100	Shock
2	29	MS-1661-1	Door Lock, Mounting
2	28	MS-1660-1	Door Latch Stop
2	27	MS-1672	Trim, Rear Top & Bottom
1	26	MS-1671	Trim, Rear Left Side
1	25	MS-1670	Trim, Rear Right Side
1	24	MS-1669	Trim, Rear Center
1	23	MS-1637	Trim, Hinged
1	22	MS-1636	Trim, Front, Bottom
1	21	MS-1635	Trim, Front, Top
1	20	MS-1634	Trim, Front, Left Side
1	19	MS-1633	Trim, Front, Right Side
1	18	MS-1665-1	PL., Blank, Unbal. Output
1	17	BI106-1	Lamp, Incandescent
1	16	AX-187	Unbal. Output Kit, Top
1	15	AX-124	H.V. Lamp Socket Ass'y
2	14	PO-186	Cam, 2 Point Catch
4	13	PM-53-A36.56	Rod, Latch
2	12	HA-114-1	Handle, Latch
2	11	SC-128-0832-5	Screw, Knurled Head
2	10	MS-1715	Bracket, Air Filter
1	9	AD-103-1	Filter, Air
3	8	MS-1459-1	Channel, Shock Mount
1	7	MS-1465-1	Panel, Aux. Frame
1	6	MS-1460-1	Panel, Main Frame
1	5	MS-1699-1	Panel, Top
1	4	AX-175	Shield, Base, Main Frame
1	3	AX-174	Shield, Base, Aux. Frame
1	2	MS-1648-1	Door, Rear, Aux. Frame
1	1	MS-1647-1	Door, Rear, Main Frame

ENCLOSURE FINISH -
 TMC BLUE-GREY

FOR SHOCK MOUNT SPEC-
 SEE S-428

NOTE: SEE NPL-AX-185 FOR ALL
 MOUNTING HARDWARE
 REQUIRED TO MOUNT ITEMS
 SHOWN.

ISSUE	ITEM	CHANGED FROM	DATE	CH. NO.	DRAFTS	CHECKER	ENG. APP.
TOLERANCES		SCALE: NPL NO A					
ALL	DEC. DIM.	±	DRILL PUNCH, COMMERCIAL STOCK				
OTHERS	FRAC. DIM.	±	SIZES AND MANUFACTURERS				
	ANGULAR DIM.	±	TOLERANCES ARE NOT INCLUDED.				

REQ. PER UNIT	MODEL	PROJECT NO.	ASSY. NO.	DATE
1	GPT-10K B3			
1	GPT-10K B2			
1	GPT-10K B1			

THE TECHNICAL MATERIEL CORP. MAMARONECK, NEW YORK			
STOCK SIZE			
CABINET ENCLOSURES AND ACCESSORIES			
MATERIAL		WEIGHT PER PC.	
TYPE & TEMPER			
HEAT TREAT. SPEC.		FINISH & SPEC. NO.	

AX-185