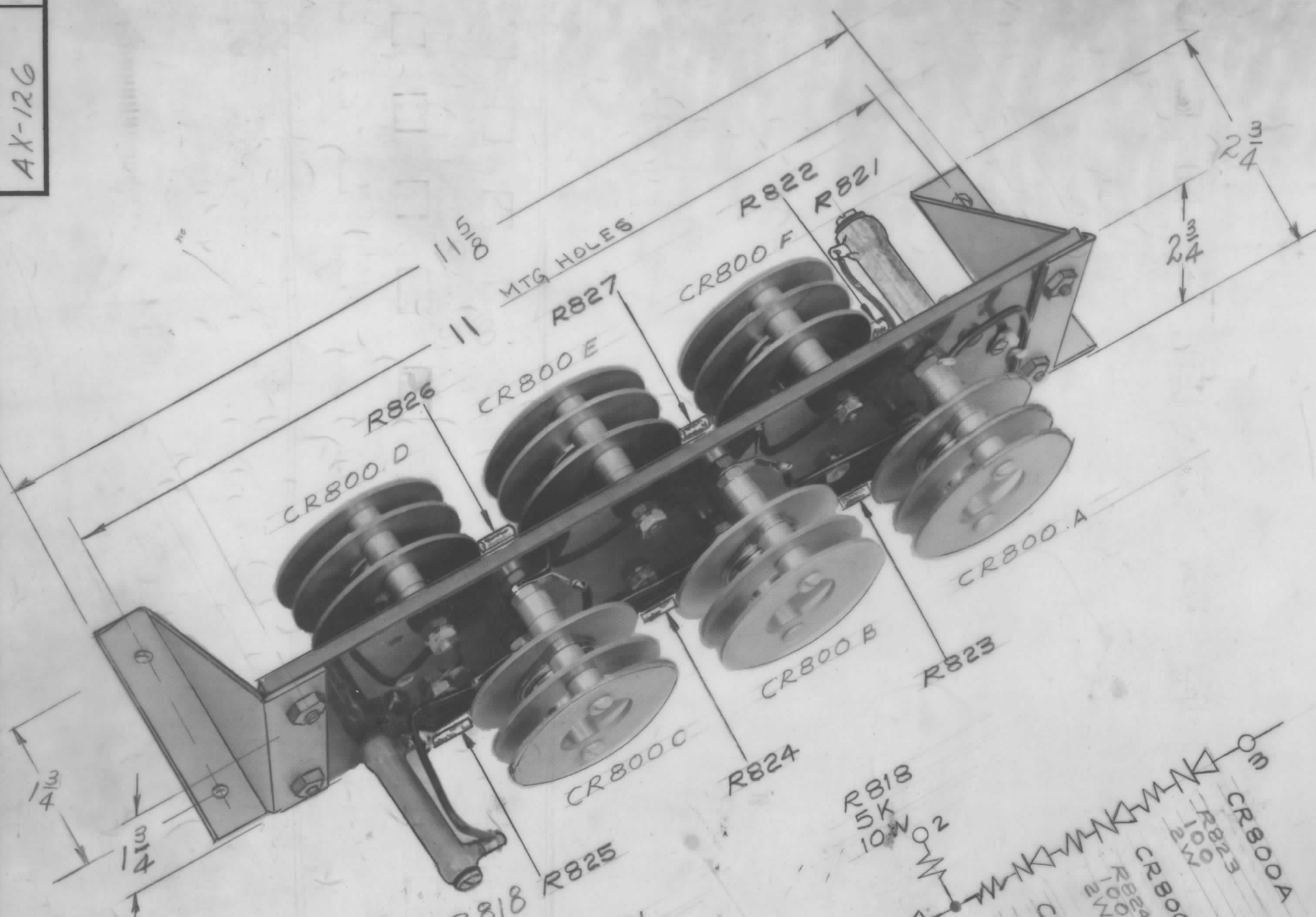


AX-126  
C



MECHANICAL SPECIFICATIONS:

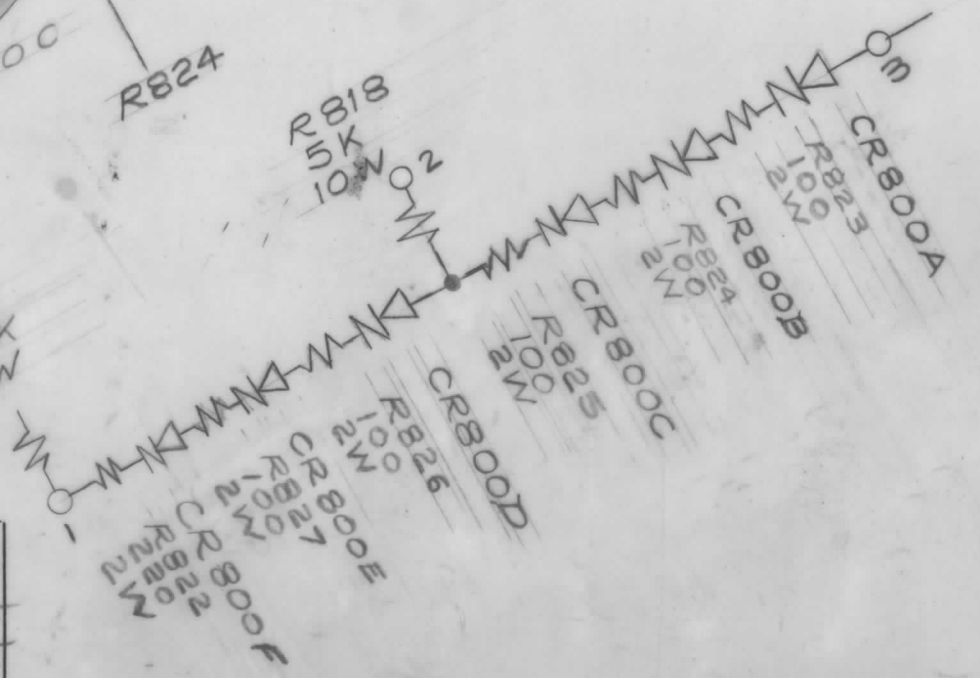
1- SEE ILLUSTRATION

ELECTRICAL SPECIFICATIONS:

- 1- INDIVIDUAL UNITS ARE MATCHED
- 2- INDIVIDUAL UNITS ARE MODIFIED ZENNER TYPE VR100-200-520

NOTES - THIS DRAWING FOR MAINTENANCE PURPOSES, THIS ASSEMBLY MUST BE REPLACED AS A UNIT, INDIVIDUAL SEMI-CONDUCTORS ARE FACTORY MATCHED. ASSEMBLY REPLACEMENT GREATLY FACILITATES MAINTENANCE.

C	1	TERM. #2 RELOCATED	3-7-63	8430			
B	2	SCHEMATIC ADDED	8-24-60	2822	RU		
A	1	R822 THRU R827 ADDED					
	1	Added R821 to Board	9/23/59	1245	16		
ISSUE	ITEM	CHANGED FROM	DATE	CH. NO.	DRAFTS	CHECKER	ENG. APP.
TOLERANCES			SCALE: 8A-1698				
DEC. DIM. ±			MAXIMUM ALLOWABLE TOLERANCES HAVE BEEN DETERMINED AND ANY DEVIATIONS WILL BE CAUSE FOR REJECTION.				
FRAC. DIM. ±			REMOVE ALL BURRS AND SHARP EDGES				
ANGULAR DIM. ±							



REQ. ITEM	PART NO.	DESCRIPTION	SYMBOL
	CP	THE TECHNICAL MATERIEL CORP. MAMARONECK. NEW YORK	
	CP	SEMI CONDUCTOR DEVICE SET	
	CP	CR800A, B, C, D, E, F.	
TYPE & TEMPER	HEAT TREAT. SPEC.	DRAWN	CHECKED
FINISH & SPEC. NO.	ELEC. DES. APP.	MECH. DES. APP.	

1	GPT-10K			
REQ. PER UNIT	MODEL	PROJECT NO.	ASS'Y. NO.	DATE

USED ON

AX-126 C