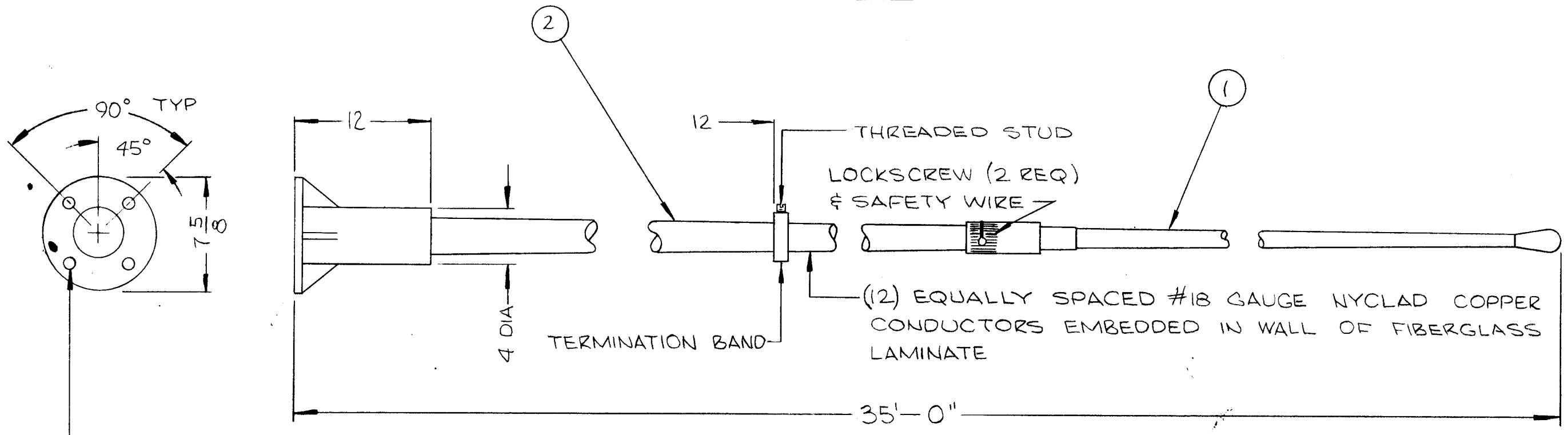


AW108

REVISIONS

SYM	DESCRIPTION	DATE	E.M.N. NO.	DRAFT	CHKD	APPD
Ø	ORIGINAL RELEASE FOR PRODUCTION	10/6/66	Ø	CV		
A	7 5/8 WAS 7 7/8	12-17-69	19685	KD	KH	O.P. KZ



21/32 DIA ON 6 DIA BASE CIRCLE  
HOLE PATTERN TO FIT NAVY  
BASE #61335

REQ'D.	ITEM	PART NUMBER	DESCRIPTION	SYMBOL
1	2	AW104-3	ELEMENT, ANTENNA (BOT. SECTION)	
1	1	AW104-1	ELEMENT, ANTENNA (TOP SECTION)	

**R. HAY LIST OF MATERIAL**

**THE TECHNICAL MATERIEL CORP.**  
MAMARONECK, NEW YORK

**WHIP, ANTENNA**

UNLESS OTHERWISE SPECIFIED DIMENSIONS ARE IN INCHES AND INCLUDE CHEMICALLY APPLIED OR PLATED FINISHES	DRAWN <i>wjw</i>	DATE	FINAL APPROV. <i>R. Hay</i>	DATE 10/6/66
DECIMALS .X ± .05 .XX ± .01 .XXX ± .005	CHECKED <i>RCS</i>	DATE	AW108	A
FRACTIONS ± 1/64 ANGLES ± 0° 30'	ELECT. DES.	DATE	SHEET 1 OF 2	REV. LTR.
TOLERANCES	MECH. DES.	DATE		

NOTES

THE CONTENTS OF THIS DRAWING ARE THE EXCLUSIVE PROPERTY OF THE TECHNICAL MATERIEL CORP. ITS UNAUTHORIZED USE OR REPRODUCTION IN WHOLE OR IN PART IS STRICTLY FORBIDDEN.

Q'TY./UNIT	MODEL USED ON	ASS'Y. NO.
SCALE	CODE C	3401-235

