

THE CONTENTS OF THIS DRAWING ARE THE EXCLUSIVE PROPERTY OF THE TECHNICAL MATERIEL CORP. ITS UNAUTHORIZED USE OR REPRODUCTION IN WHOLE OR IN PART IS STRICTLY FORBIDDEN.

REQ. PER UNIT  
2

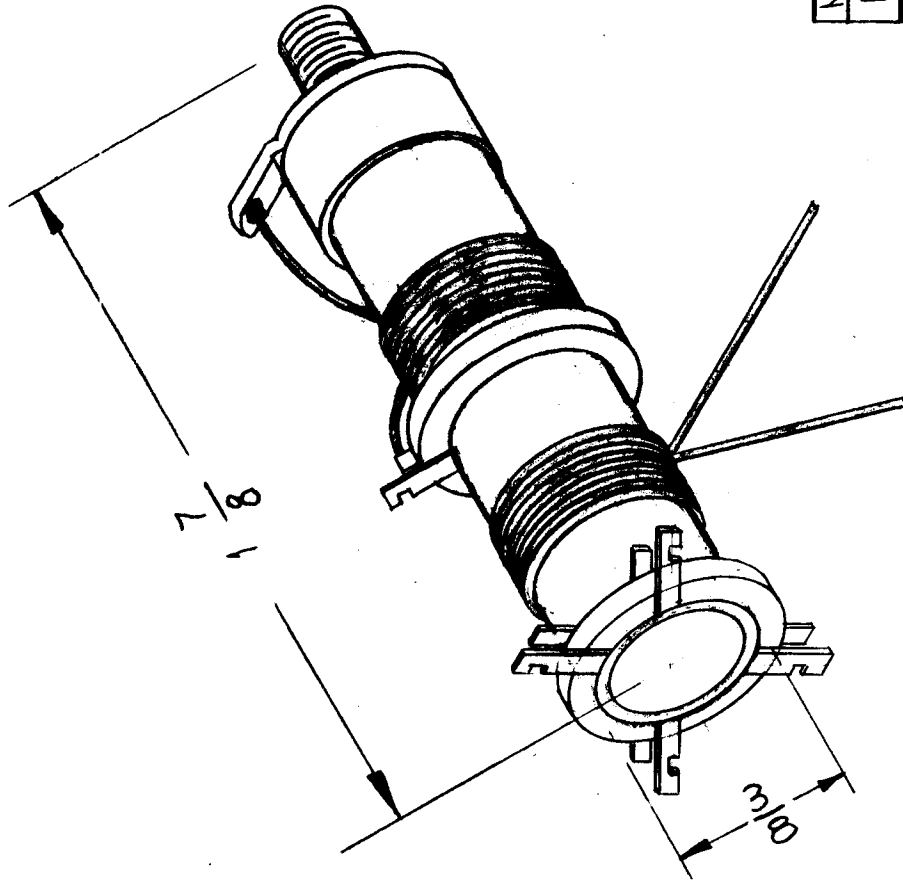
MODEL  
HFS-1

USED ON  
ASSY. NO.  
3500

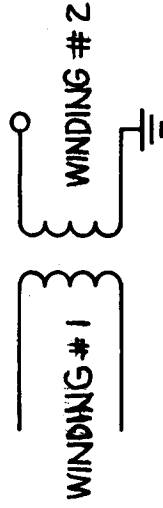
DATE  
8-15-62

AT-104

A



~ SCHEMATIC ~



WINDING 1  
.65mh ± 10%  
Q MIN. = 125 @ 25MC

WINDING 2  
.60mh ± 10%  
Q MIN. = 115 @ 25MC

MODEL	REQ	FUNCTION	OPER FREQ	SYMBOL
HFS	2	IFAMPL TRANSF.	43 MC	

SYN DESCRIPTION

DATE 11-28-64

CH. NO. 5937

DRAFTS RU

CHECKER ~~RA~~ RA

ENG. APP. (2A-2165)

UNLESS OTHERWISE SPECIFIED:

DIMENSIONS ARE IN INCHES

TOLERANCES ON

FRAC. ± 1/64 DEC. ± .003 ANGLES ± 1/2°

SCALE: (2A-2165)

MAXIMUM ALLOWABLE TOLERANCES HAVE BEEN DETERMINED AND ANY DEVIATIONS WILL BE CAUSE FOR REJECTION. REMOVE ALL BURRS AND SHARP EDGES

REQ. ITEM	PART NO.	J. STRUMMER	DESCRIPTION	SYMBOL
			THE TECHNICAL MATERIEL CORP. MAMARONECK, NEW YORK	
			TRANSFORMER, R.F. FIXED (44MC IF AMP)	
		WJA	CHECKED	FINAL APPROVAL
		JMA	DRAWN	
			HEAT TREAT. SPEC.	
			MATERIAL	
			STOCK SIZE	
			FINISH & SPEC. NO.	AT-104
			ELEC. DES. APP. MECH. DES. APP.	A