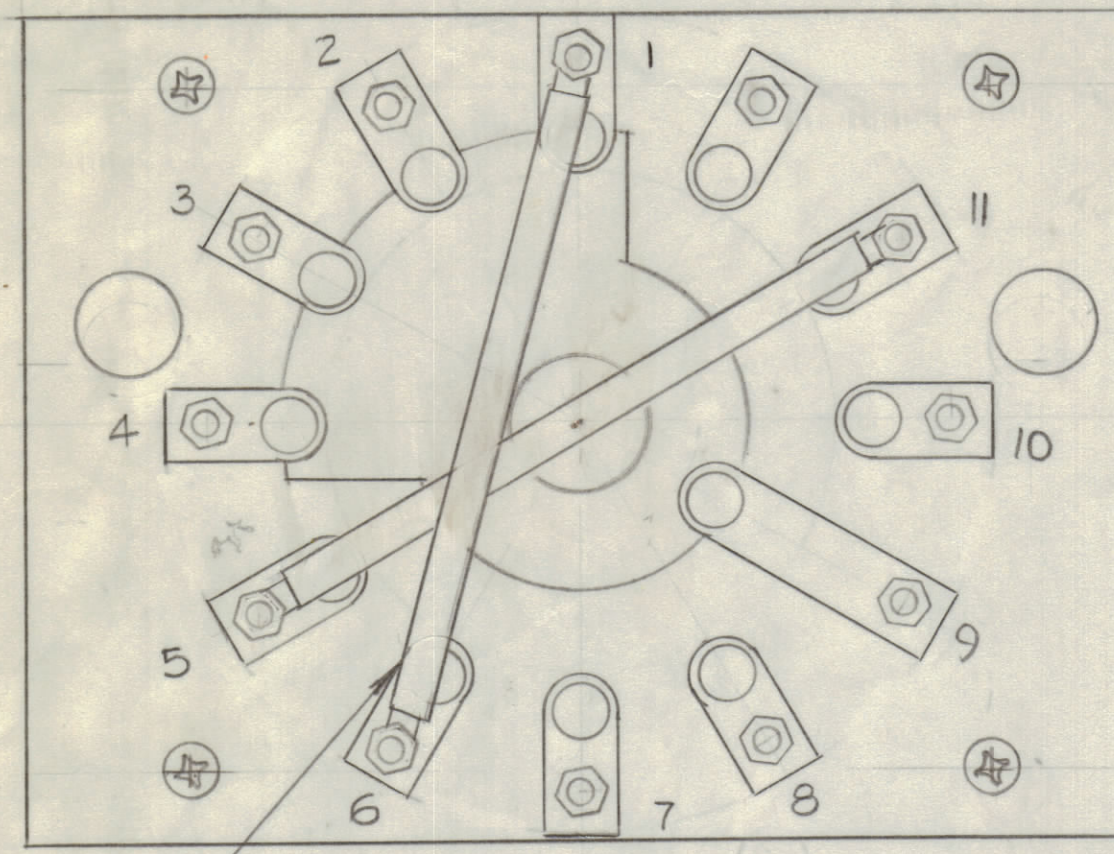
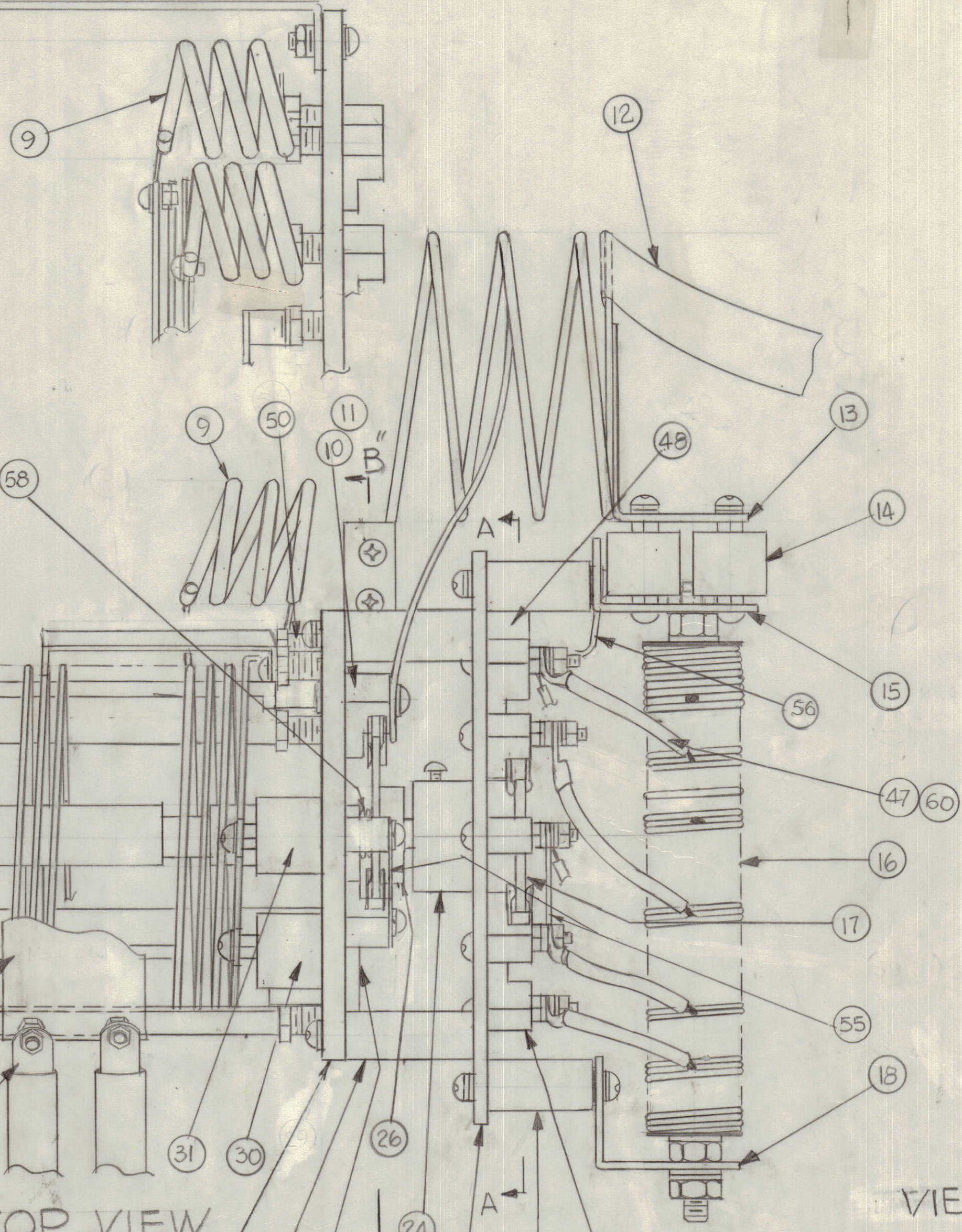


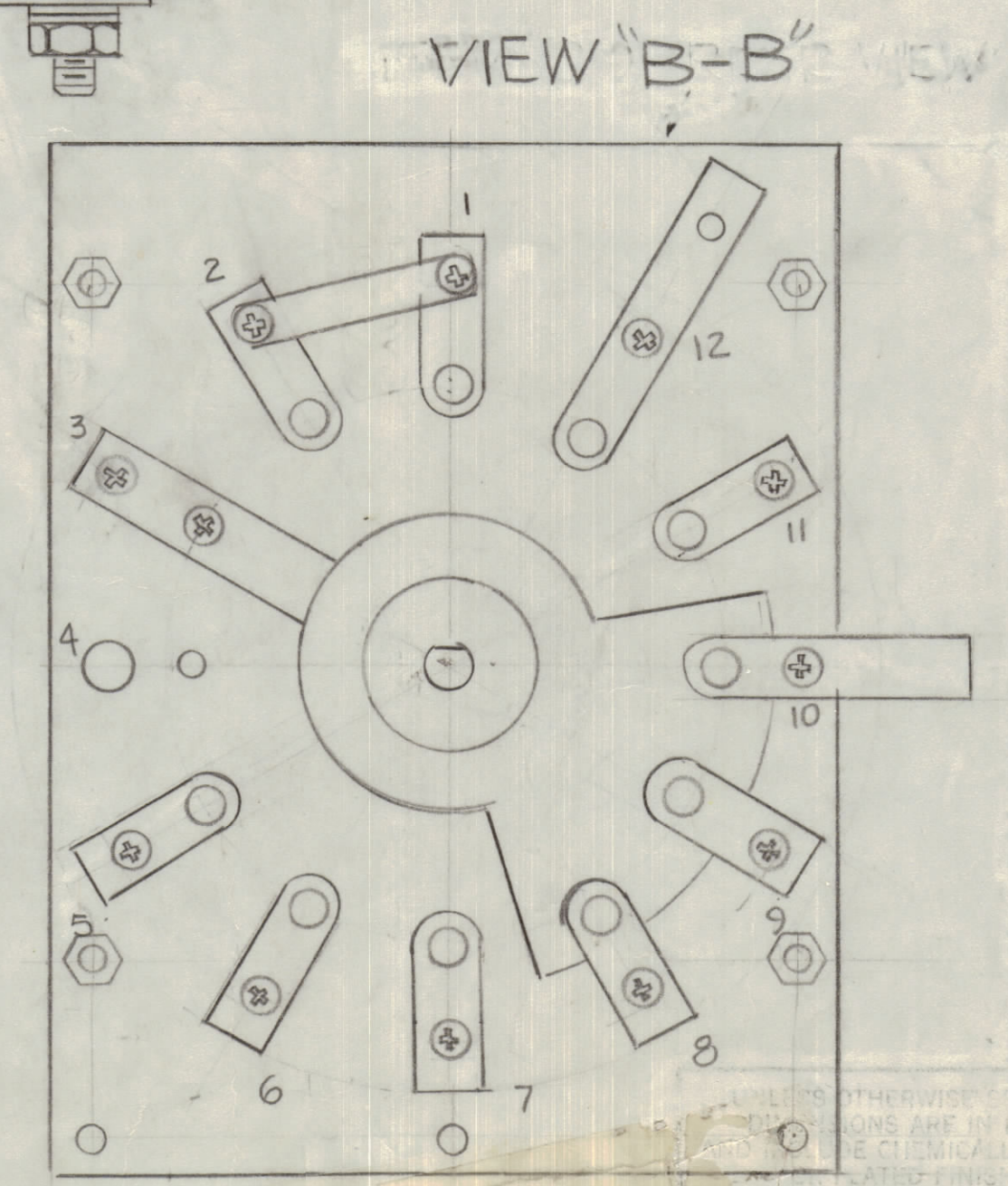
REVISIONS							
E.M.N.O.	DRAFT	CHKD	ZONE	LTR	DESCRIPTION	DATE	APPROVED
21859	GDL			A	VIEW 'B-B' ADD	1-8-81	



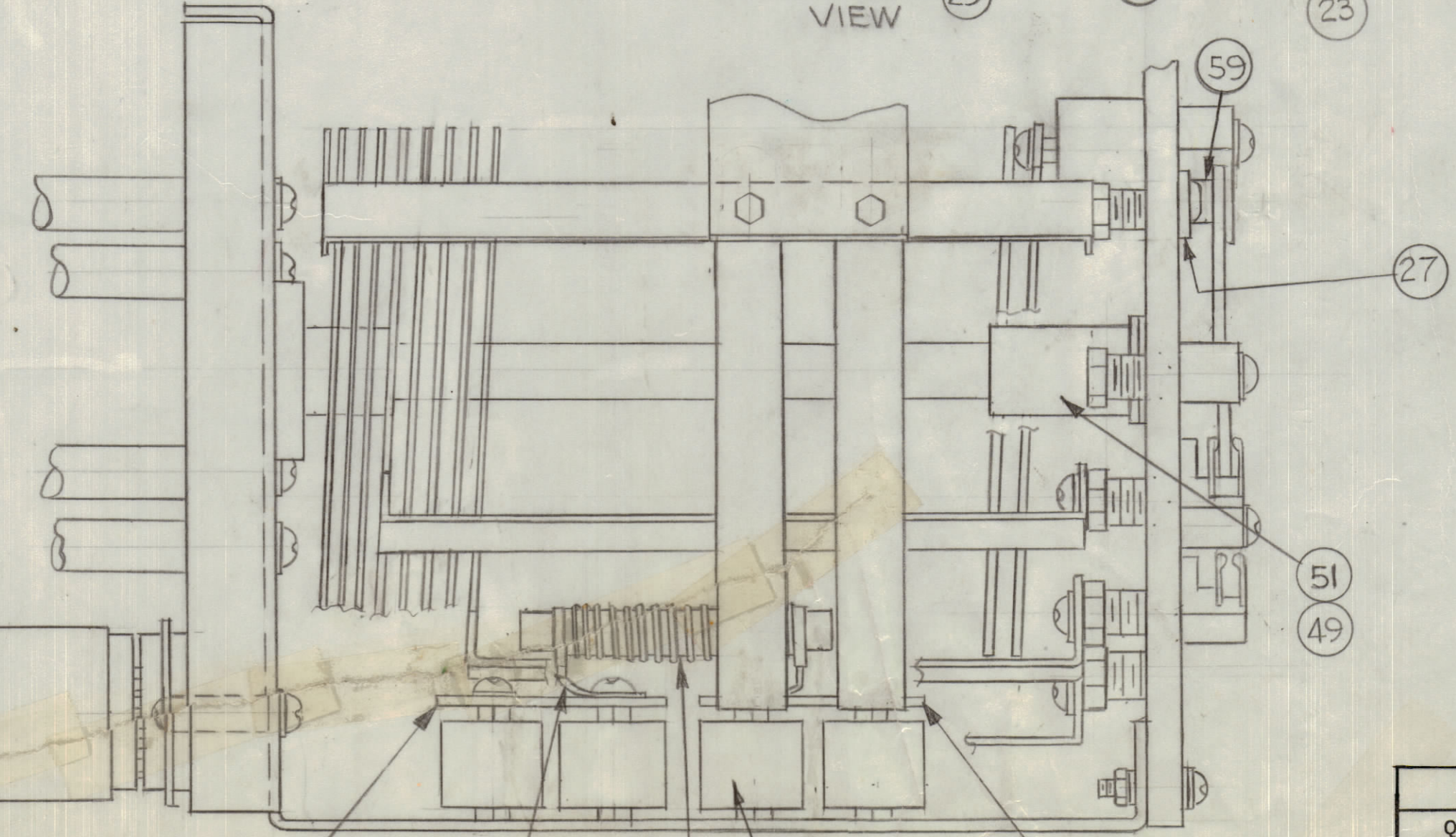
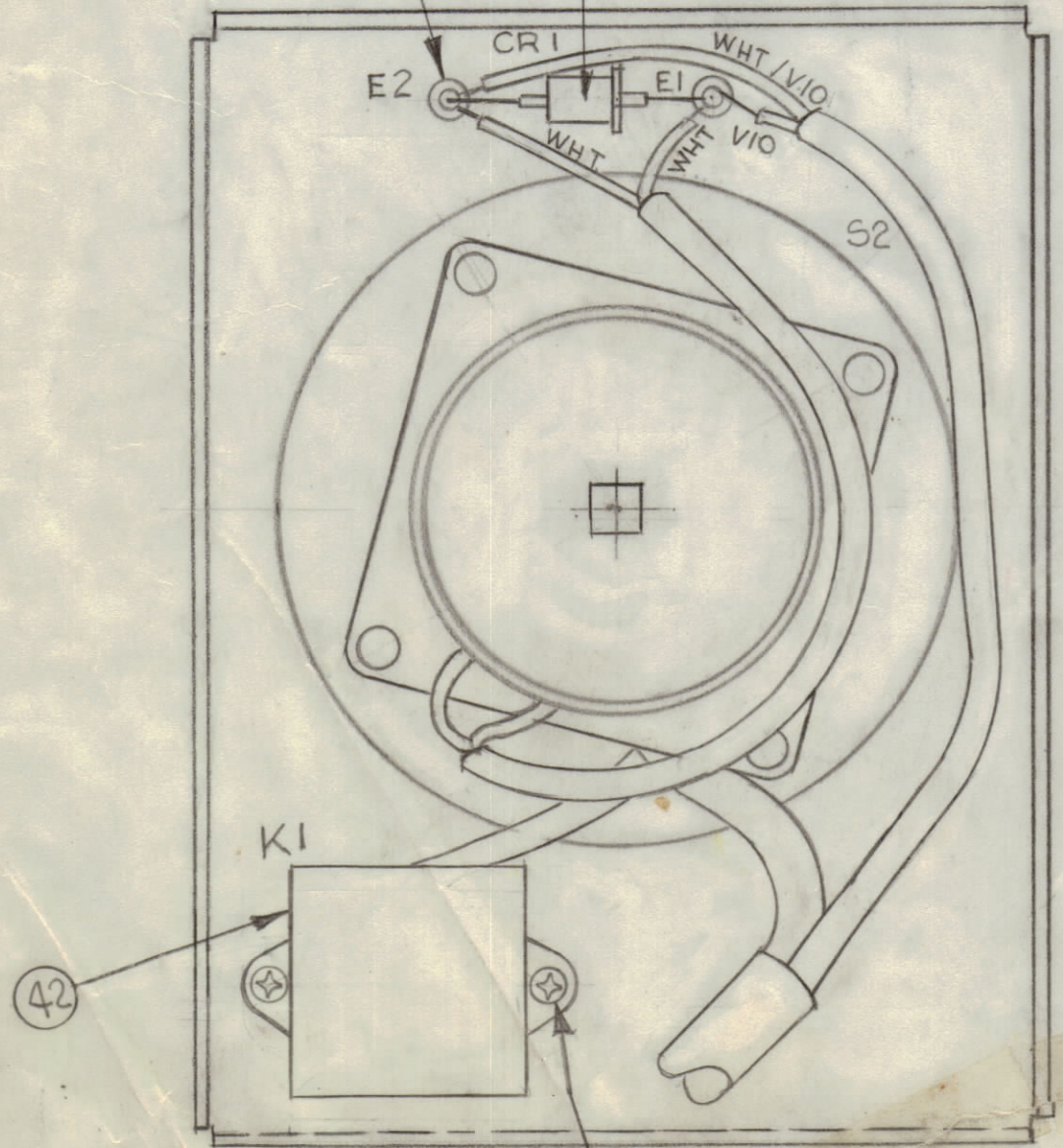
VIEW "A-A"



TOP VIEW



VIEW "B-B"



SIDE VIEW

QTY.	ITEM	PART NO.	DESCRIPTION	SYMBOL
4	60	TE 104 - 5	TERM. LUG, LKG	
1	59	SP155-2	SPRING, CONTACT	
1	58	SP128-2	SPRING, HEL	
	57			
1	56	MS 203-6-3.250	LEAD, CONNECTING	
2	55	MS 203-11-1.250	LEAD, CONNECTING	
2	54	MS 203-6-4.125	LEAD, CONNECTING	
	53			
1	52	PX 370-31-8-3.5	INSULATION, TEFLON	
1	51	KY103-3.62555	KEY, MACHINE	
10	50	PM1299-2	CONTACT ELECTRICAL	
1	49	PM 1434	HUB	
1	48	PM1210-5	SPRING, LEAD WIRE	
X	47	PX 370-8-7	INSULATION, TEFLON	
1	46	MS 6365	PLATE, CONT	
2	45	TE 104-2	TERM. LUG	
1	44	CL 292	COIL, RF	L1
1	43	MS 6401	PLATE, CONT, CAP	
1	42	RL168-2C10-2400	RELAY, ARMATURE	K1
2	41	TE 117-4	SPACER	
1	40	TS100-3	SOCKET, RELAY	
2	39	TE 102-2	TERMINAL, TURRET	
1	38	IN 547	SEMICONDUCTOR, DIV, DIODE	CR1
1	37	CA 16 28	WIRING, HARNES, BND SW	
X	36	PX 100-186	INSULATION, SLEEVING	
1	35	PM 1414	PLATE, BEARING	
1	34	MS 6214	STRAP, ELECTRICAL CONN.	
X	33	PX 370-31-8-3.5	INSULATION, TEFLON	
	32	MS 202-6-5.5	STRAP	
1	31	CC109-28	CAPACITOR, FXD CERA	C7
1	30	CC109-19	CAPACITOR, FXD CERA	C8
1	29	PX 1083	WAFER, BAND SW	
1	28	TE 204-7R20E2	SPACER, HELI-COIL	
1	27	PM 1415	CONTACT, ELEC	
1	26	PM 1320	ROTOR, BAND SW	
1	25	PX 1152	HUB, ROTOR	
1	24	SC 123-0632B5	SCREW, MACH NYLON	
1	23	PX 1151	WAFER, BAND SW	
2	22	NS 3W0208	INSULATOR, STANDOFF	
23	21	PM 1324	SPACER	
44	20	PM 1210-4	CONTACT, LEAF SPRING	
22	19	PM 1309-1	BASE, MTG. CONT	
1	18	MS 2665-56	BRACKET, L	
1	17	PM 1495	ROTOR, ELECTRICAL SW	
1	16	CL 472	COIL, LOAD	L3
1	15	MS 6810	BRACKET, CAP. MTG	
8	14	CC109-38	CAPACITOR, FIXED CERAMIC	C4, C5, C6
1	13	MS 203-6-3.50	LEAD, CONN.	
1	12	CL 471	COIL	
2	11	PM 1210-5	CONTACT, LEAF SPRING	
2	10	PM 1319	BASE, SWITCH CONTACT	
2	9	CL 493	COIL	L4, L5
3	8	PX 1068	SPACER	
3	7	PX 1069	SUPPORT	
1	6	PM 1496	SHAFT & HUB	
1	5	CL 470	COIL, RF	L2
1	4	MS 5982	CHASSIS	
1	3	MS 5119	PLATE, MTG	
4	2	TE0832AE1.875H6	SPACER, THREADED	
1	1	SW 429	SWITCH, ROTARY	

LIST OF MATERIAL

FINAL APPROVAL	DATE
MECH. DES.	DATE
ELECT. DES.	DATE
CHECKED	DATE
DRAWN	DATE

THE TECHNICAL MATERIEL CORP.
MAMARONECK, NEW YORK

BAND SW ASS'Y
TLAA-1K

1	TLAA-1K	
QTY / UNIT	MODEL USED ON	ASS'Y NO.
APPLICATION		
CODE		
MATERIAL		
FINISH		

TOLERANCES ON	
DECIMALS	FRACTIONS
X ± .05	± 1/64
XX ± .01	ANGLES
XXX ± .005	± 0° - 30'

NOTICE TO PERSONS RECEIVING THIS DRAWING
THE TECHNICAL MATERIEL CORPORATION claims proprietary right in the material disclosed hereon. This drawing is issued in confidence for engineering information only and may not be reproduced or used to manufacture anything shown hereon without permission from THE TECHNICAL MATERIEL CORPORATION to the user. This drawing is loaned for mutual assistance and is subject to recall at any time.

SIZE	CODE	IDENT NO.	DWG NO.	ISSUE
D	82679	AS 160		A
SCALE	1:1	SHEET		OF