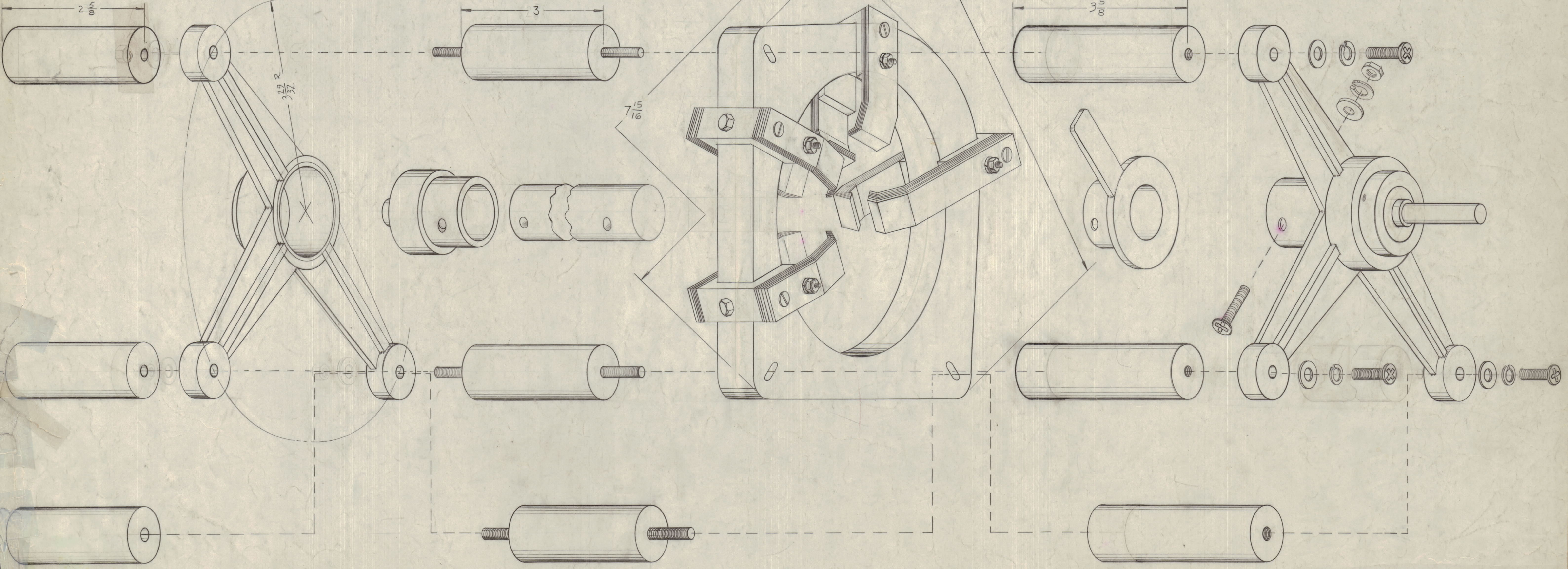
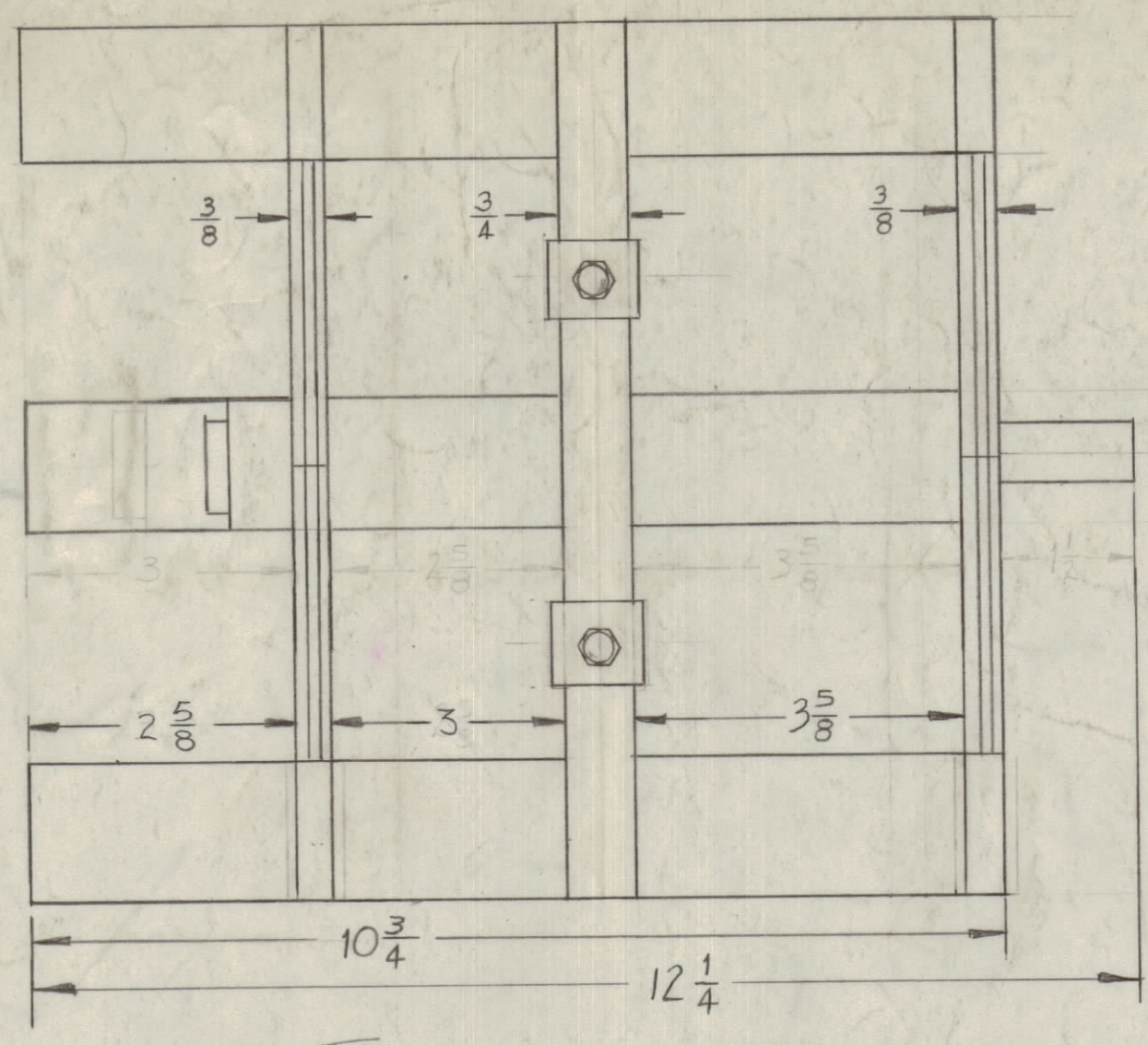


**NOTICE TO PERSONS RECEIVING THIS DRAWING**

THE TECHNICAL MATERIEL CORPORATION claims proprietary right in the material disclosed herein. This drawing is issued in confidence for engineering information only and may not be reproduced or used to manufacture any item shown hereon without permission from THE TECHNICAL MATERIEL CORPORATION, 101 W. 42nd St., New York 18, N.Y. This drawing is loaned for mutual assistance and is subject to recall at any time.

Property of:  
THE TECHNICAL MATERIEL CORPORATION  
MAMARONECK, NEW YORK

NOTE: NUTS & WASHERS TO BE DISCARDED WHEN IS APPLIED TO EQUIPMENT



**SPECIFICATIONS -**  
 WAFER - CERAMIC  
 SPACERS - MELAMINE  
 CONTACTS & ROTOR - RHODIUM PLATED BRASS.  
 VOLTAGE - 10,000  
 CURRENT - 50 AMPS  
 EXPLODED VIEW FOR CLARIFICATION ONLY  
 SUPPLIED AS COMPLETE ASSEMBLED ITEM.

DIMENSIONED IN ACCORDANCE WITH REFERENCE DRAWING 8 OF THE FEDERAL CATALOGING HANDBOOK H6-2-59.  
 L = 1 1/4 Max.  
 W = 7 1/8 Max.  
 H = 6 7/8 Max.  
 SHAFT = 1/2"

VOLT. TYPE —  
 MAX VOLT. —  
 MAX AMP —

INTER-CHG'D 3" x 2 5/8" DIM	11-25-67	17742	RME	
4 LOCK NUTS CHNG TO HEX N.	9-3-64	12230	ASB	
PICTORIAL CORRECTED WAFER WAS TWO-PIECE	5-21-63	3029		
PICTORIAL CLARIFIED	10-27-60	3279		
SCALE:	4A-2066			

T GPT-40K AX-215 3-4-60

REQ. ITEM	PART NO.	DESCRIPTION	QTY
THE TECHNICAL MATERIEL CORP. MAMARONECK, NEW YORK			
SWITCH ASS'Y (10K RF OUTPUT)			
DR. man file AS 117 D			