

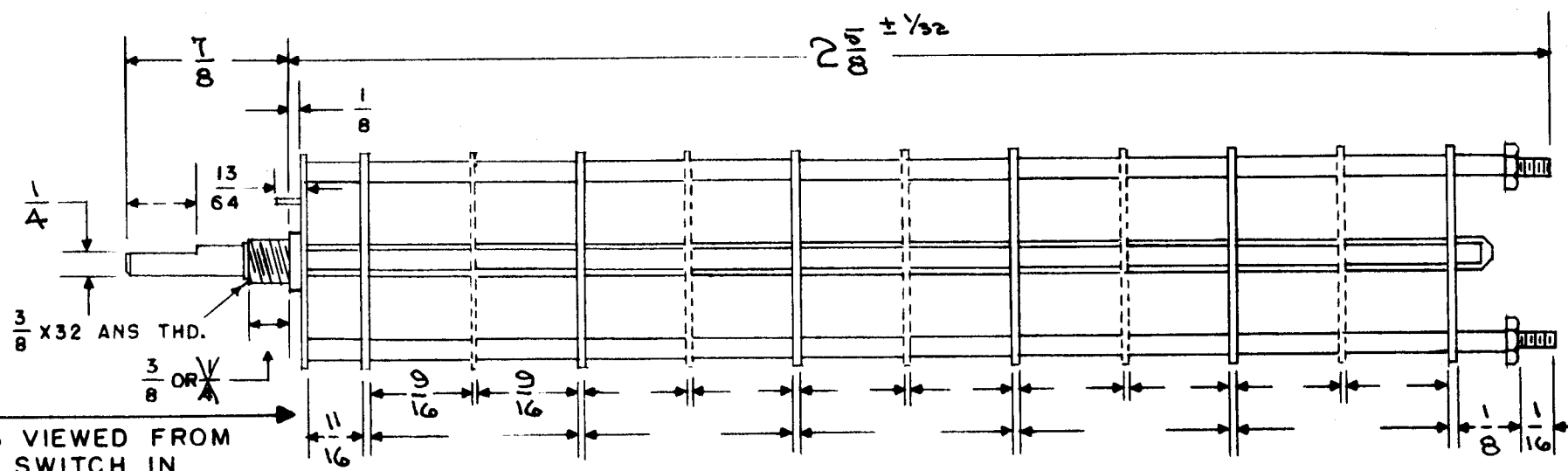
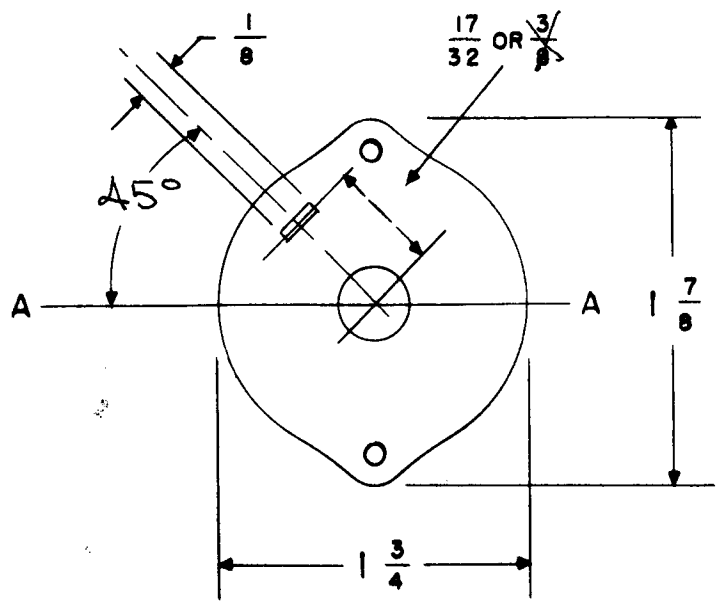
FOR SPARE
PARTS USE
ONLY

1. SWITCH, ROTARY
 - (1) 3/8" dia.
 - (2) 32 thds. per inch
 - (3) 3/8" long
2. Sectional type
 2. two sections
3. Positioning data
 - a. 5 positions
 - b,c. N/A
 - d. 30° positioning increment
 - e. N/A
4. Contact arrangement data
 - a. N/A
 - b. non pile-up
 - (1) 2 moving contacts sec. 1
 - 4 moving contacts sec. 2
 - (2) 8 on sec. 1
 - 10 on front of sec. 2
 - 3 on rear of sec. 2
 - (3) no dummy terminals
 - (4) five poles
 - (5) 3 throws sec. 1
 - 5 throws sec. 2
 - c. N/A
- 4.5 N/A
5.
 - a. AC,DC
 - b. 500 volts
 - c. 5 amps
 - (1) 125 volts
6. Non shorting type contacts
7. Brass contacts
8. Silver plated
9. Ceramic insulation
10. N/A
11. D - 1-7/8"
L - 2-5/8"
12. Mounting data
 - a. bushing mounted
13. Shaft data
 - a. round type, flatted
 - (1) F - 3/8"
 - G - 7/8"
 - H - 1/4" dia.
 - b. 1/4" dia.
 - c. 1-7/8" long
- 13.5 N/A
14. Clip type
15. N/A
16. See attached page 2
- 17,18. N/A
20.
 - a. The Technical Materiel Corp.
 - b. Mamaroneck, New York
 - c. 82679
 - d. AS-108
 - e. N/A
- D. For specific use
- E. Gov. type data
 1. JCENS
 2. AN/URT-17A
 3. Transmitting Set, Radio

A	CHGD RES. FR 'K' TO 'J' ADD SPARE PARTS NOTE	11-21-66	17298	RME			
ISSUE ITEM	CHANGED FROM	DATE	CH. NO.	DRAFTS	CHECKER	ENG. APP.	
TOLERANCES		SCALE: 2SW 231					
DEC. DIM. ±		MAXIMUM ALLOWABLE TOLERANCES HAVE BEEN DETERMINED AND ANY DEVIATIONS WILL BE CAUSE FOR REJECTION. REMOVE ALL BURRS AND SHARP EDGES					
FRAC. DIM. ±							
ANGULAR DIM. ±							

REQ. PER UNIT	MODEL	PROJECT NO.	ASS'Y. NO.	DATE
	RTF-2 1/2			
USED ON				

REQ. ITEM	PART NO.	DESCRIPTION	SYMBOL
		THE TECHNICAL MATERIEL CORP. MAMARONECK, NEW YORK	
STOCK SIZE			
		SWITCH ASSEMBLY, ROTARY	
MATERIAL		(S402)	
TYPE & TEMPER	HEAT TREAT. SPEC.	DRAWN	CHECKED
FINISH & SPEC. NO.		ELEC. DES. APP.	MECH. DES. APP.



FRONT & REAR SECTIONS VIEWED FROM FRONT OR KNOB END OF SWITCH IN EXTREME COUNTER CLOCKWISE POSITION

DRAW IN FLAT ON ABOVE SHAFT IN EXTREME COUNTER CLOCKWISE POSITION AND SHOW ANGLE IN REFERENCE TO LINE A-A

NUMBER OF SECTIONS 2
 NUMBER OF POSITIONS 11
 ANGLE OF THROW 30° (~~30° OR 60°~~)

PART NUMBER _____
 STAMP ON FRONT PLATE YES ___ NO ___

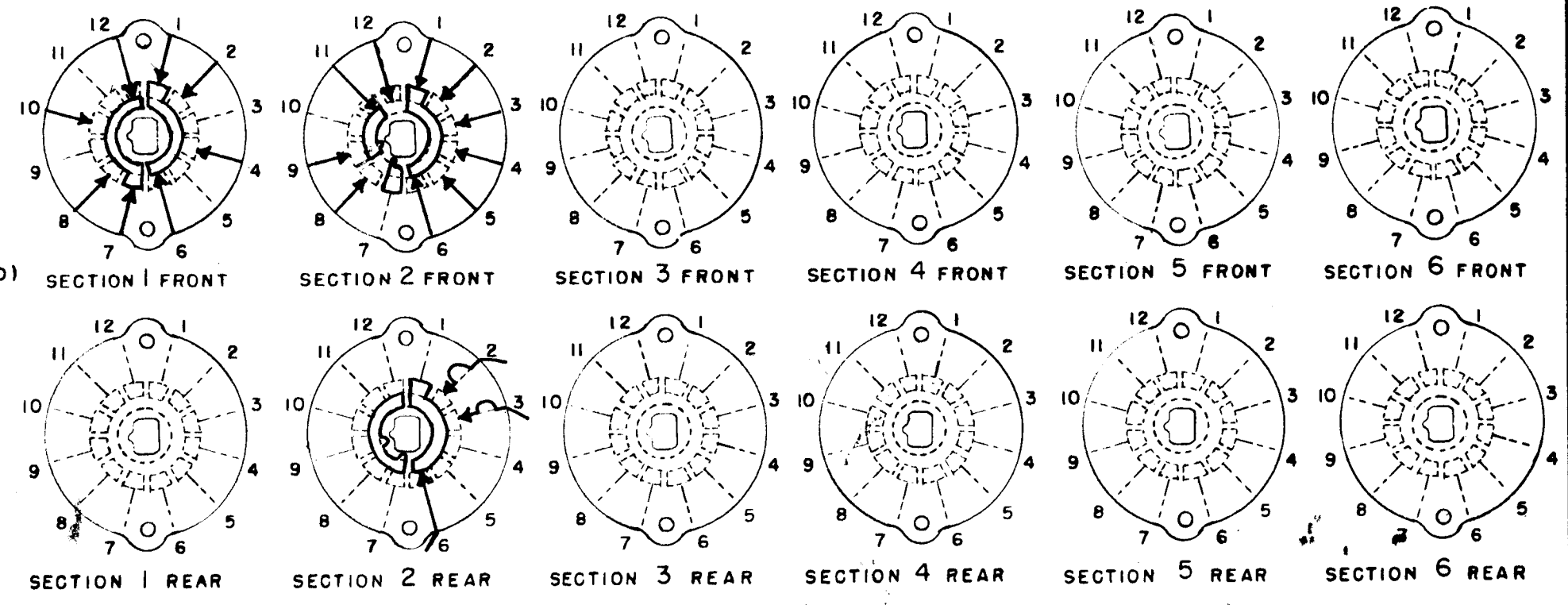
CONTACTS & ROTORS: (IF NOT SPECIFIED, SHORTING TYPE WILL BE SUPPLIED)
 SHORTING ___ NON SHORTING

MATERIAL: (IF NOT SPECIFIED, SILVER PLATED BRASS WILL BE SUPPLIED)
 SILVER PLATED BRASS SILVER ALLOY ___

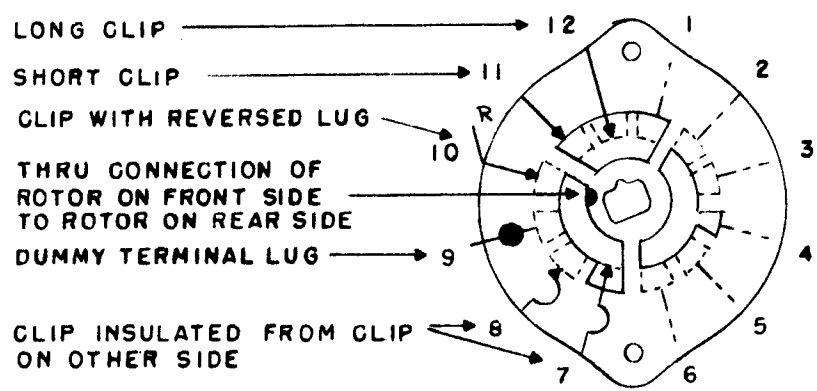
INSULATION: BAKELITE ___ CERAMIC
 SPECIFY IMPREGNATION IF REQUIRED _____

FINISH REQUIREMENTS: COMMERCIAL ARMY ___ NAVY ___
 SALT TEST (IF ANY GIVE DETAILS) _____

HARDWARE: SUPPLY
1 3/8-32 NUTS 1/2 ACROS FLATS MAT. Brass PLATING Nickel
1 3/8 INT TOOTH LOCKWASHERS MAT. Brass PLATING Nickel



SYMBOLS USED IN MARKING PRINT →



OUTLINE ROTOR BLADES AS SHOWN ABOVE WITH SWITCH IN EXTREME COUNTER-CLOCKWISE POSITION

SWITCH
 TYPE - H (HC) DH DHC QM
 QDH QHC QDHC
 (CIRCLE DESIRED TYPE)

ISSUE ITEM	CHANGED FROM	DATE	CH. NO.	DRAFTS	CHECKER	ENG. APP.
A	SEE SHEET 1	11.21.66	17248	RME	<i>[Signature]</i>	
TOLERANCES		SCALE: 2SW231				
DEC. DIM. ±		MAXIMUM ALLOWABLE TOLERANCES HAVE BEEN DETERMINED AND ANY DEVIATIONS WILL BE CAUSE FOR REJECTION.				
FRAC. DIM. ±		REMOVE ALL BURRS AND SHARP EDGES				
ANGULAR DIM. ±						

REQ. PER UNIT	MODEL	PROJECT NO.	ASS'Y. NO.	DATE
	RTF-2 Yc			
USED ON				

REQ. ITEM	PART NO.	DESCRIPTION	SYMBOL
THE TECHNICAL MATERIEL CORP. MAMARONECK, NEW YORK			
STOCK SIZE		SWITCH ASSY., ROTARY	
MATERIAL		S402	
TYPE & TEMPER		DRAWN	CHECKED
HEAT TREAT. SPEC.		<i>[Signature]</i>	<i>[Signature]</i>
FINISH & SPEC. NO.		ELEC. DES. APP.	MECH. DES. APP.
		AS-108	Page 2 of 2
			A