

1. SWITCH, rotary
2. Sectional type
 - a. two sections
3. Positioning data
 - a. two positions
 - b,c. N/A
 - d. 30° positioning increment
 - e. N/A
4. Contact arrangement data
 - a. N/A
 - b. non-plate-up type
 - (1) 3 moving contacts ea. section
 - (2) 8 on sec. 1
 - 9 on sec. 2

- (3) no dummy lugs
- (4) six poles
- (5) 1 throw
- c. N/A
- 4.5 N/A
5. a. AC, DC
 - b. 500 volts
 - c. 5 amps
 - (1) 125 volts
6. Non shorting type contacts
7. Brass contacts
8. Silver plated
9. Mycalex insulation
10. N/A
11. D - 1-5/16 in.
L - 1 in.
12. Mounting data
 - a. bushing
 - (1) 3/8 in. dia.
 - (2) 32 thds. per in.
 - (3) 3/8 in. long
 - b. N/A
13. Shaft data
 - a. round type
 - (1) F - 3/8 in.
 - G - 4-1/2 in.
 - H - 1/4 in.
- 13.5 N/A
14. Clip type
15. N/A
16. See attached page 2
- 17,18. N/A
20. a. The Technical Materiel Corp.
b. Mamaroneck, N.Y.
c. 82679
d. AS-103
e. N/A
- D. For specific use
- E. Gov. type data
 1. JCENS
 2. AN/URT-17A
 3. Transmitting Set, Radio

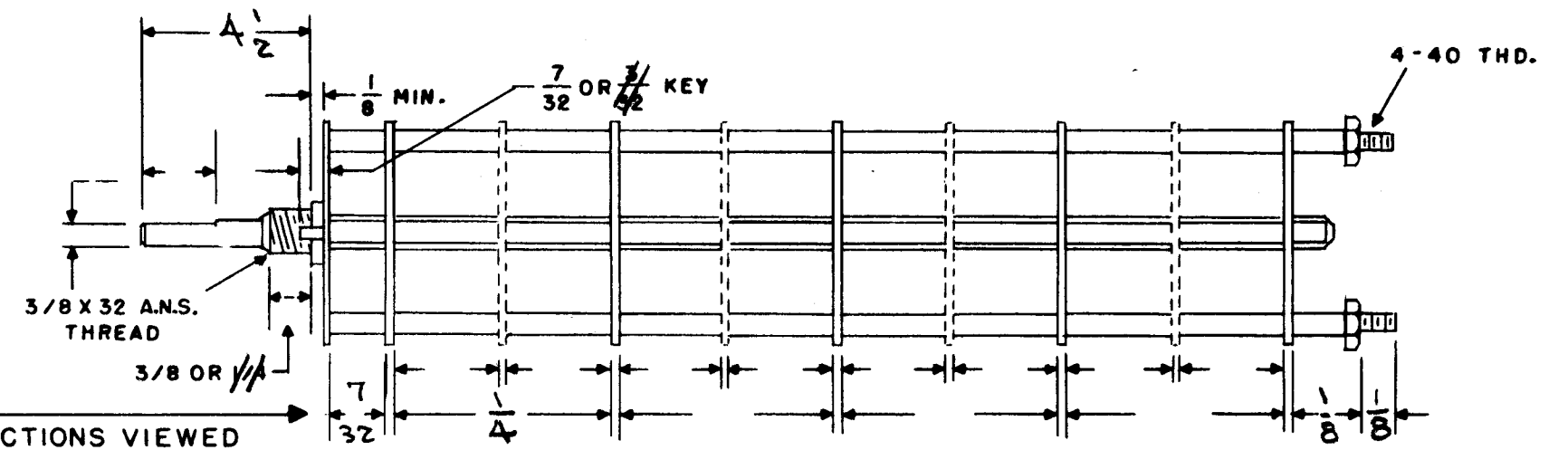
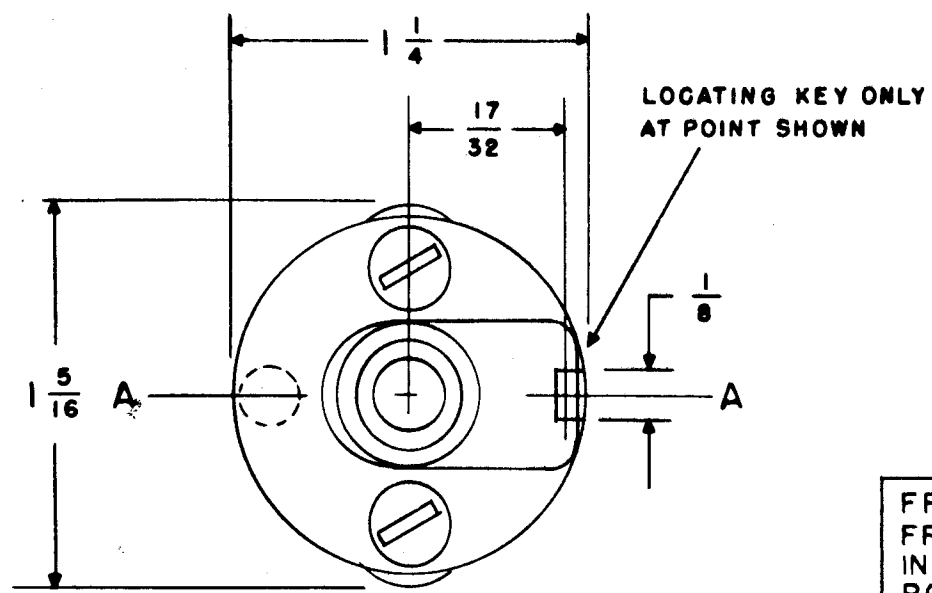
NOTE
FOR SPARE PARTS
USE ONLY

A		SPARE PT NOTE ADDED CM2015E501G03YY WAS CM20B501J CM20F102G03 WAS CM20B102J		11/14/66	17231	WTO	JCB	DB
ISSUE ITEM	CHANGED FROM	DATE	CH. NO.	DRAFTS	CHECKER	ENG. APP.		
TOLERANCES		SCALE: 2SW238						
DEC. DIM. ± FRAC. DIM. ± ANGULAR DIM. ±		MAXIMUM ALLOWABLE TOLERANCES HAVE BEEN DETERMINED AND ANY DEVIATIONS WILL BE CAUSE FOR REJECTION. REMOVE ALL BURRS AND SHARP EDGES						

1	RTF-2 Mult.			
REQ. PER UNIT	MODEL	PROJECT NO.	ASS'Y. NO.	DATE
USED ON				

REQ. ITEM	PART NO.	DESCRIPTION	SYMBOL
THE TECHNICAL MATERIEL CORP. MAMARONECK. NEW YORK			
STOCK SIZE			
SWITCH ASSEMBLY, ROTARY			
MATERIAL (S204)			
		C.D.D.	APP
TYPE & TEMPER	HEAT TREAT. SPEC.	DRAWN	FINAL APPROVAL
		WST	AS-103
FINISH & SPEC. NO.		ELEC. DES. APP.	MECH. DES. APP.
			Page 1 of 2

AS-103
Page 2 of 2



FRONT & REAR OF SECTIONS VIEWED FROM FRONT OR KNOB END OF SWITCH IN EXTREME COUNTER-CLOCKWISE POSITION

SHOW CUT AWAY PORTION OF FLAT IN BLACK AND GIVE ANGLE TO LINE A-A $\pm 3^\circ$. (STANDARD RMA KNURLED AND SLOTTED SHAFT ALSO AVAILABLE)

NUMBER OF SECTIONS 2
 NUMBER OF POSITIONS 2
 ANGLE OF THROW 30 (30° OR 45°)

PART NUMBER _____
 STAMP ON FRONT PLATE YES _____ NO _____

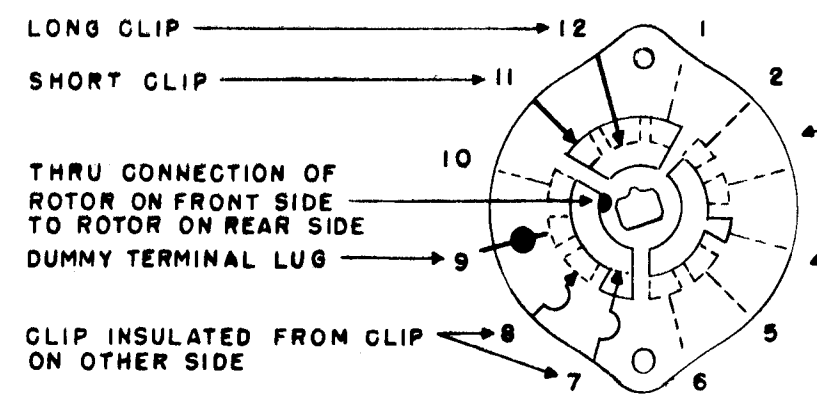
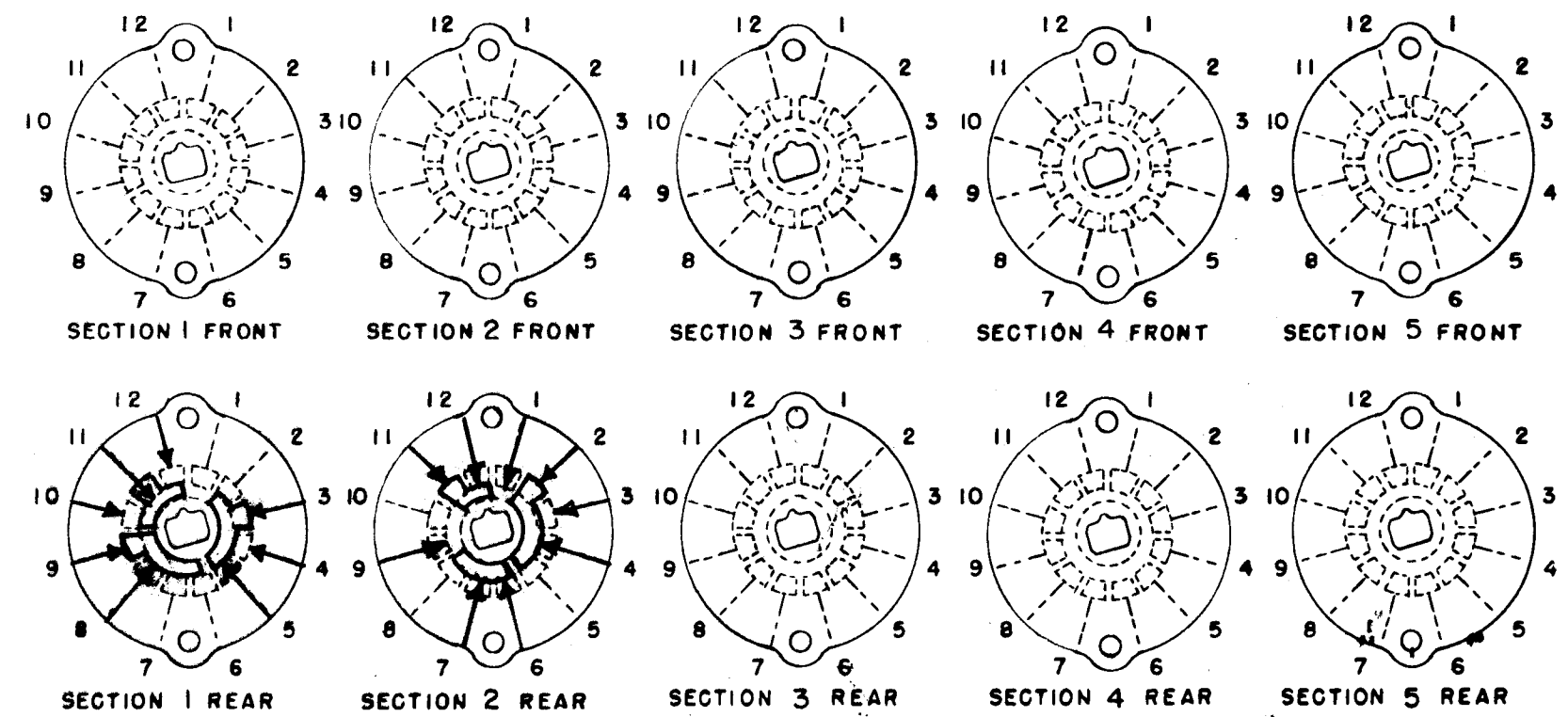
CONTACTS & ROTORS: (IF NOT SPECIFIED, SHORTING TYPE WILL BE SUPPLIED)
 SHORTING _____ NON SHORTING

MATERIAL: (IF NOT SPECIFIED, SILVER PLATED BRASS WILL BE SUPPLIED)
 SILVER PLATED BRASS SILVER ALLOY _____

INSULATION: 1/16 BAKELITE _____ 1/8 MYCALEX
 SPECIFY IMPREGNATION IF REQUIRED _____

FINISH REQUIREMENTS: COMMERCIAL ARMY _____ NAVY _____
 SALT TEST (IF ANY GIVE DETAILS) _____

HARDWARE: SUPPLY
 _____ 3/8-32 NUTS _____ ACROSS FLATS
 _____ 3/8 INTERNAL TOOTH LOCKWASHERS



SYMBOLS USED IN MARKING PRINT

TYPE F SWITCH

OUTLINE ROTOR BLADES AS SHOWN ABOVE WITH SWITCH IN EXTREME COUNTER-CLOCKWISE POSITION

A	SEE SHEET 1 OF 2	11.14.46	17231	WHD	JCF		
ISSUE	ITEM	CHANGED FROM	DATE	CH. NO.	DRAFTS	CHECKER	ENG. APP.
TOLERANCES		SCALE: 23W238					
DEC. DIM. \pm		MAXIMUM ALLOWABLE TOLERANCES HAVE BEEN DETERMINED AND ANY DEVIATIONS WILL BE CAUSE FOR REJECTION.					
FRAC. DIM. \pm		REMOVE ALL BURRS AND SHARP EDGES					
ANGULAR DIM. \pm							

REQ. PER UNIT	MODEL	PROJECT NO.	ASS'Y. NO.	DATE
	RTF-2 Nut.			
USED ON				

REQ. ITEM	PART NO.	DESCRIPTION	SYMBOL
		THE TECHNICAL MATERIEL CORP. MAMARONECK, NEW YORK	
STOCK SIZE		SWITCH ASSY, ROTARY (5204)	
MATERIAL			
TYPE & TEMPER	HEAT TREAT. SPEC.	DRAWN	CHECKED
		WJG	
FINISH & SPEC. NO.		ELEC. DES. APP.	MECH. DES. APP.

AS-103
Page 2 of 2