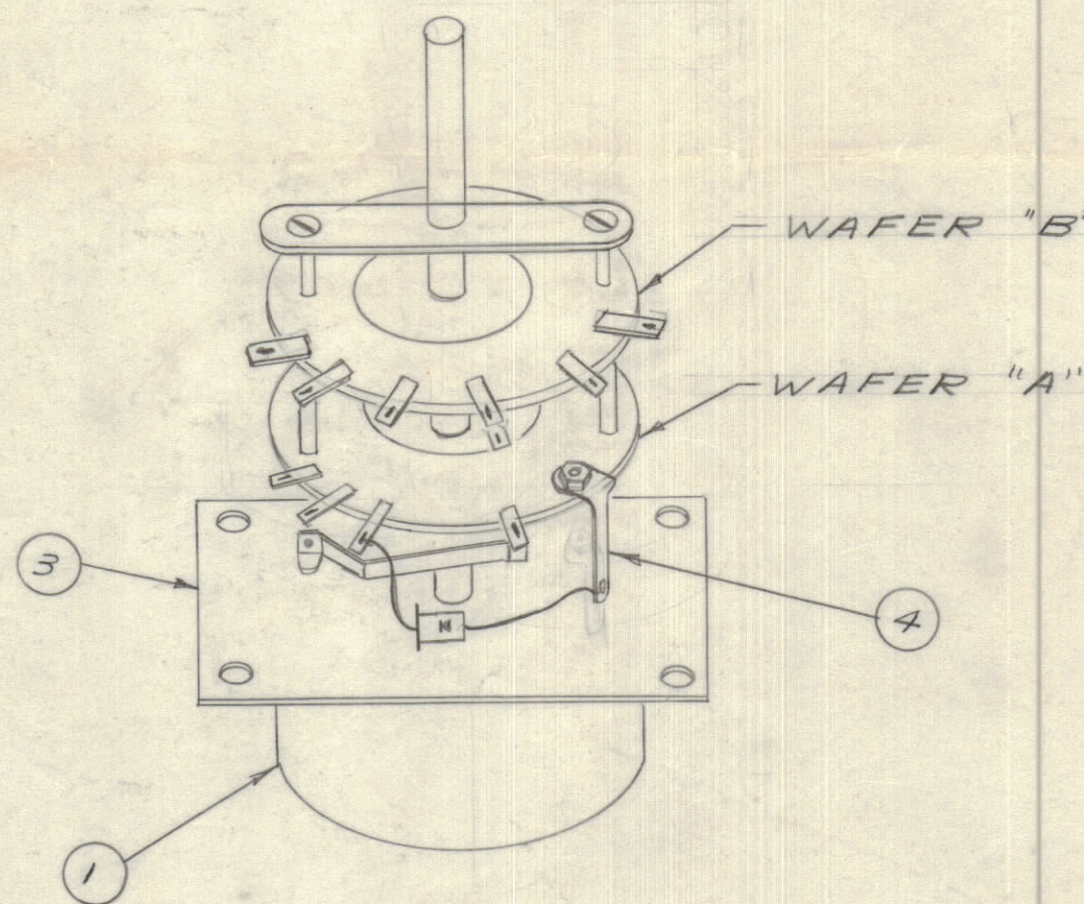
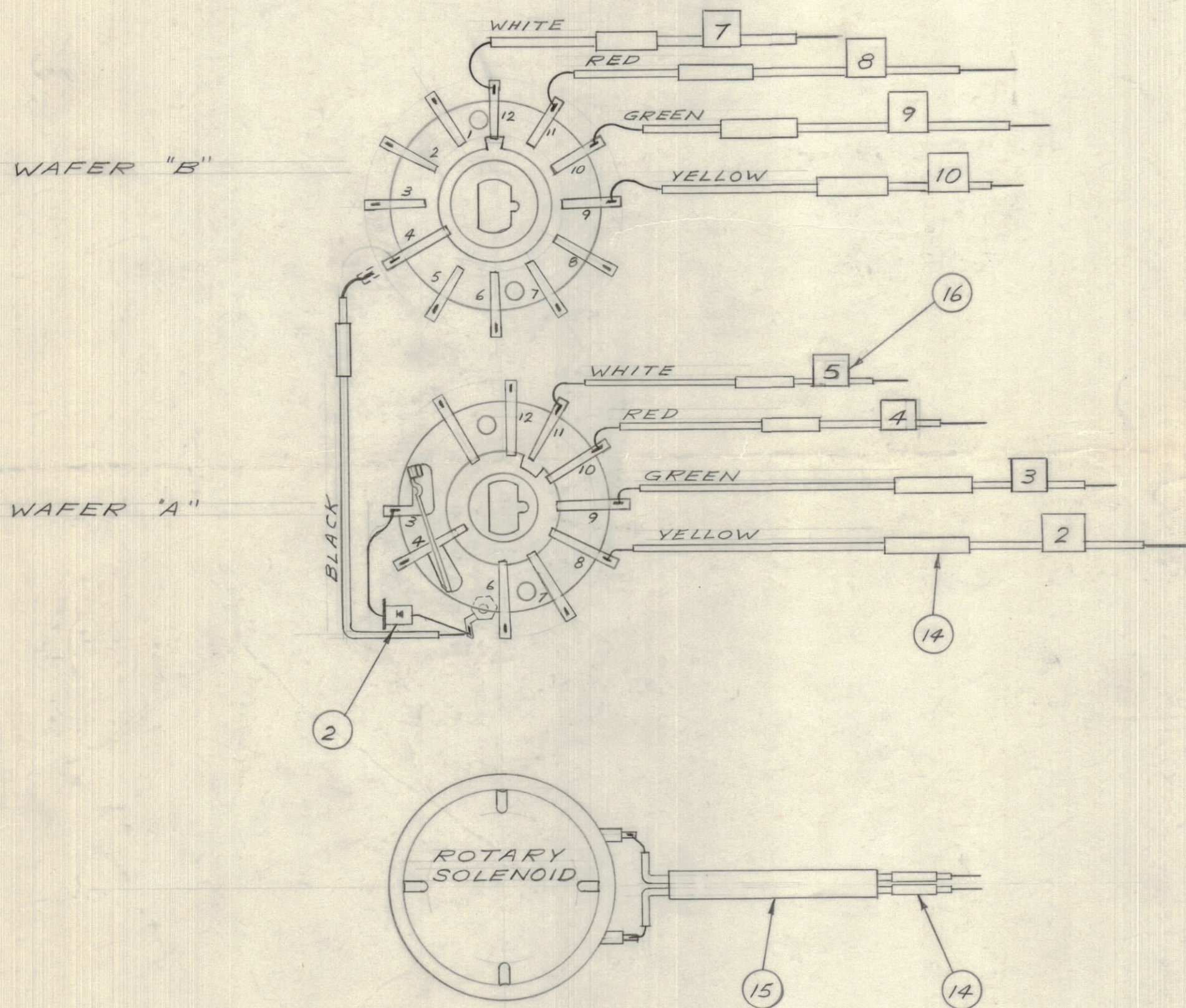


IF IT IS FOUND DESIRABLE TO CHANGE ANY TOLERANCE OR OTHER DETAIL SPECIFIED ON THIS DRAWING NOTIFY THE PURCHASER PROMPTLY.		DIMENSIONS IN INCHES UNLESS OTHERWISE SPECIFIED					
MAXIMUM ALLOWABLE TOLERANCES HAVE BEEN DETERMINED AND DEVIATIONS WILL BE CAUSE FOR REJECTION. REMOVE ALL BURRS AND SHARP EDGES.							
ISSUE	ITEM	CHANGED FROM	DATE	CN. NO.	DRAFTS	CHECKER	ENG. APP.
φ		REL TO PROD	21-4-67		RD		

REQ.	ITEM	PART NO.	DESCRIPTION	SYMBOL
1	1	SW 380	SWITCH ROT. SOLENOID	
1	2	IN 547	DIODE	
1	3	MS 4100	PLATE MOUNTING	
1	4	TE104-4	TERM LUG LOCKING	
2	5	MWC20(7)U0	WIRE ELEC INSUL	
3 3/4	6	MWC20(7)U4		2
3 1/4	7	MWC20(7)U5		3
3 1/4	8	MWC20(7)U2		4
4 1/4	9	MWC20(7)U9		5
6	10	MWC20(7)U9		7
4 1/2	11	MWC20(7)U2		8
4 3/4	12	MWC20(7)U5		9
3 3/4	13	MWC20(7)U4	WIRE ELEC INSUL	10
6	14	PX 830-18-1	SLEEVING SHRINK	
2	15	PX 100-18-1	SLEEVING INSUL	
AR	16	BRADY	WIRE MARKERS	

NOTE:
 NOS ON WIRE MARKERS
 CORRESPOND TO PIN NOS
 ON TB1502.



AS10005 φ

TOLERANCES		SCALE: NTS
ALL OTHERS	DEC. DIM. ± FRAC. DIM. ± ANGULAR DIM. ±	DRILL, PUNCH, COMMERCIAL STOCK SIZES AND MANUFACTURERS TOLERANCES ARE NOT INCLUDED.

TTR-12		KIT 278	
MODEL	PROJECT NO.	ASS'Y. NO.	DATE
USED ON			

STOCK SIZE		TMC (Canada) LIMITED OTTAWA ONTARIO SWITCH SOLENOID ROTARY (REM. CONT.)	
MATERIAL	WEIGHT PER PC.		
TYPE & TEMPER		RD	
HEAT TREAT. SPEC.		JH	
FINISH & SPEC. NO.		HATCH	AS10005 φ