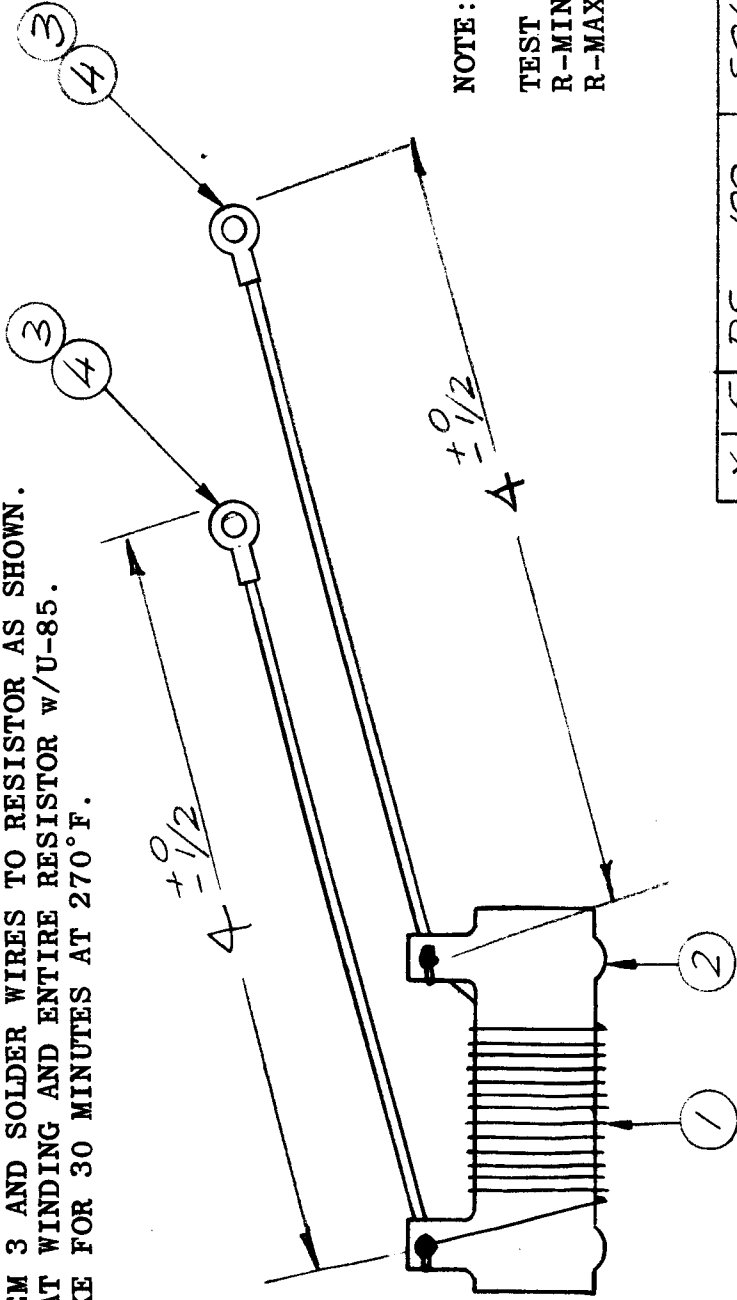


AR-111 A

REQ. PER UNIT	M DEL	USED ON ASSY. NO.	DATE
2	PS-4	PAL-1K	8-6-59

PROCEDURE

1. WIND 13 TURNS OF WIRE (ITEM 1) ON RESISTOR (ITEM 2), CLOSE WOUND.
2. ATTACH SOLDER LUGS (ITEM 4) TO, TWO 4" PIECES OF ITEM 3 AND SOLDER WIRES TO RESISTOR AS SHOWN.
3. COAT WINDING AND ENTIRE RESISTOR w/U-85.
4. BAKE FOR 30 MINUTES AT 270°F.



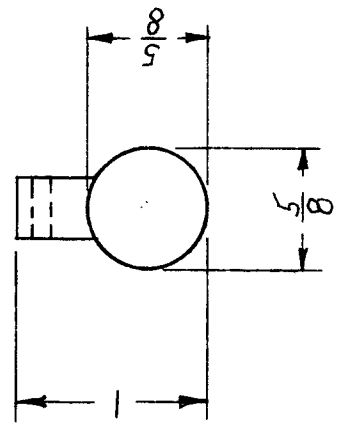
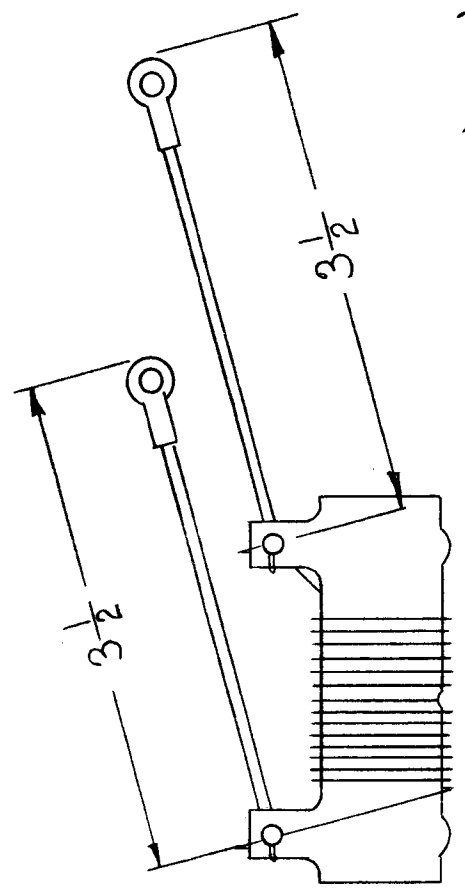
NOTE:

TEST ONE UNIT OF 100
 R-MIN 0.008 Ω
 R-MAX 0.010 Ω

X 5	BS - 100	SOLDER, SOFT	DESCRIPTION	SYMBOL
2	TE-155-34170	TERMINAL, SOLDERLESS	THE TECHNICAL MATERIEL CORP.	
X 3	MWC12(19)UO	CABLE, INSULATED	MAMARONECK, NEW YORK	
1	RW-109-28	RESISTOR, WIREWOUND	RESISTOR, SHUNT ASSY	
X 1	WI-108-2	WIRE, CEROC (HI TEMP)		
REQ. ITEM	PART NO.			
STOCK SIZE				
MATERIAL				
TYPE TEMPER	HEAT TREAT. SPEC.			
J.C. Biele	DRAWN			
	CHECKED			
FINISH & SPEC. N.				
FINAL APPR VAL				

COMPLETELY REV.	12/27/68	19144	CV	J.C. Biele	ENG. APP.
ISSUE ITEM	CHANGED FROM	DATE	CH. NO.	DRAFTS	CHECKER
TOLERANCES					
MAXIMUM ALLOWABLE TOLERANCES HAVE BEEN DETERMINED AND ANY DEVIATIONS WILL BE CAUSE FOR REJECTION. REMOVE ALL BURRS AND SHARP EDGES					
DEC. DIM. ±					
FRAC. DIM. ±					
ANGULAR DIM. ±					

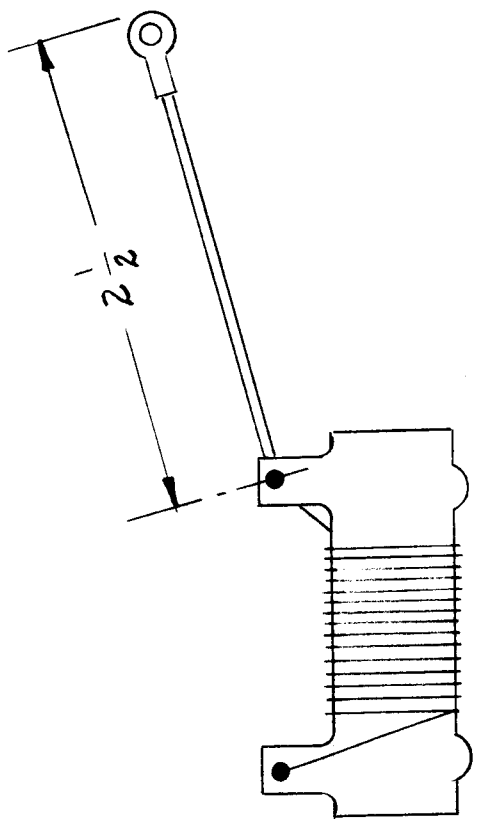
REQ. PER UNIT	USED ON	AR-112
2	ASSY. NO.	
	MODEL	
	RAK-9	
	DATE	3-8-60



Electrical Specification
 R - .07 Ω
 TOL - ± 20%

REQ. ITEM	DESCRIPTION	SYMBOL
	THE TECHNICAL MATERIEL CORP. MAMARONECK, NEW YORK	
	RESISTOR SHUNT ASSY	
	MATERIAL	
	STOCK SIZE	
	PART NO.	
	FINISH & SPEC. NO.	
	TYPE & TEMPER	
	HEAT TREAT. SPEC.	
	DRAWN	
	CHECKED	
	FINAL APPR. VAL	
ISSUE ITEM	CHANGED FROM	
TOLERANCES		
DEC. DIM. ±	SCALE: 1A-1774	
FRAC. DIM. ±	MAXIMUM ALLOWABLE TOLERANCES HAVE BEEN DETERMINED AND ANY DEVIATIONS WILL BE CAUSE FOR REJECTION.	
ANGULAR DIM. ±	REMOVE ALL BURRS AND SHARP EDGES	
	ELEC. DES. APPR.	
	MECH. DES. APP.	

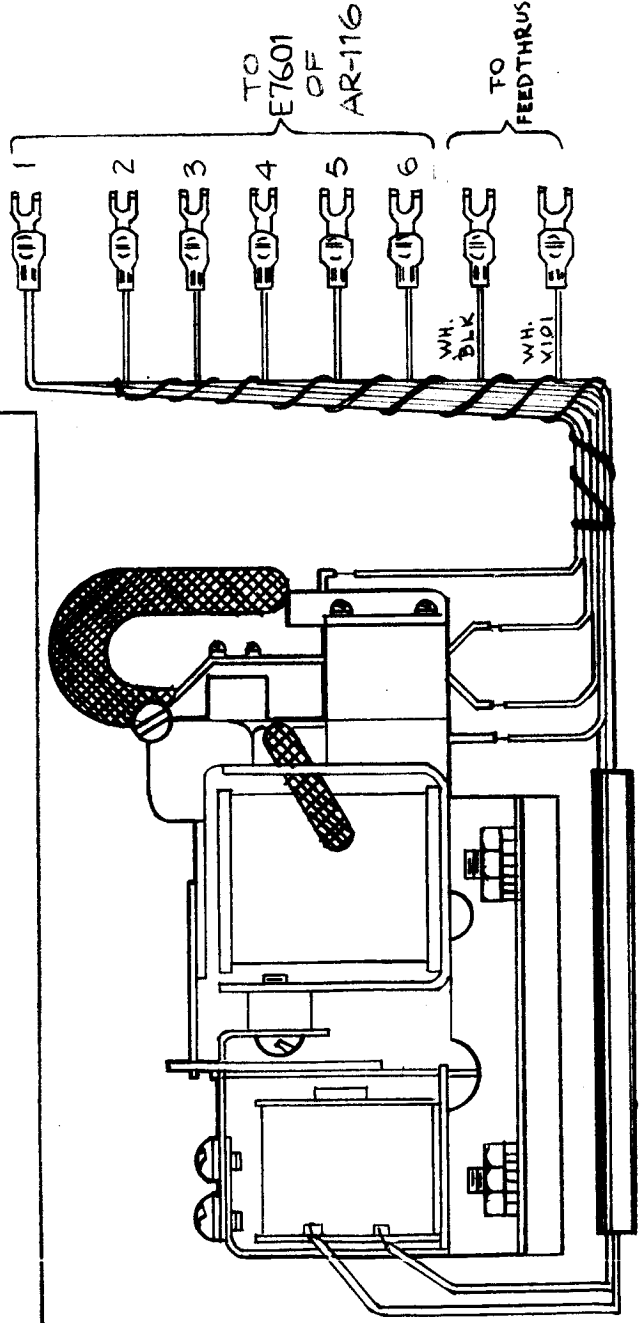
REQ. PER. UNIT 2	MODEL SBT-1K	USED ON	
		ASSY. NO.	DATE
		AR-113	



REG. ITEM	CH. NO.	DRAFTS	CHECKER	ENG. APP.	REG. ITEM	PART NO.	DESCRIPTION	SYMBOL
							THE TECHNICAL MATERIEL CORP. MAMARONECK, NEW YORK	
							RESISTOR, SHUNT ASS'Y	
CHANGED FROM TOLERANCES DEC. DIM. \pm FRAC. DIM. \pm ANGULAR DIM. \pm					DRAWN CHECKED FINAL APPROVAL AR-113			
SCALE: A-1775 NPL MAXIMUM ALLOWABLE TOLERANCES HAVE BEEN DETERMINED AND ANY DEVIATIONS WILL BE CAUSE FOR REJECTION. REMOVE ALL BURRS AND SHARP EDGES					MATERIAL HEAT TREAT. SPEC. FINISH & SPEC. NO.			

NOTE:

PHISICAL APPEARANCE OF RELAIS
 WILL VARY DEPENDING OF VENDORS
 CONFIGURATION - IN ALL CAS'ES
 ASSY WILL BE ELECTRICALLY &
 MECHANICALLY INTERCHANGEABLE



Overall Dimension of Relay less
 Cable - 3.8125 lg. x 2.219 w. x 2.4375.

LATCH TYPE
 CONTACT ARRANGEMENT -
 4C (4.P.D.T.)
 CONTACTS SILVER CADMIUM
 MOISTURE RESISTANT
 VARNISH ON COILS.

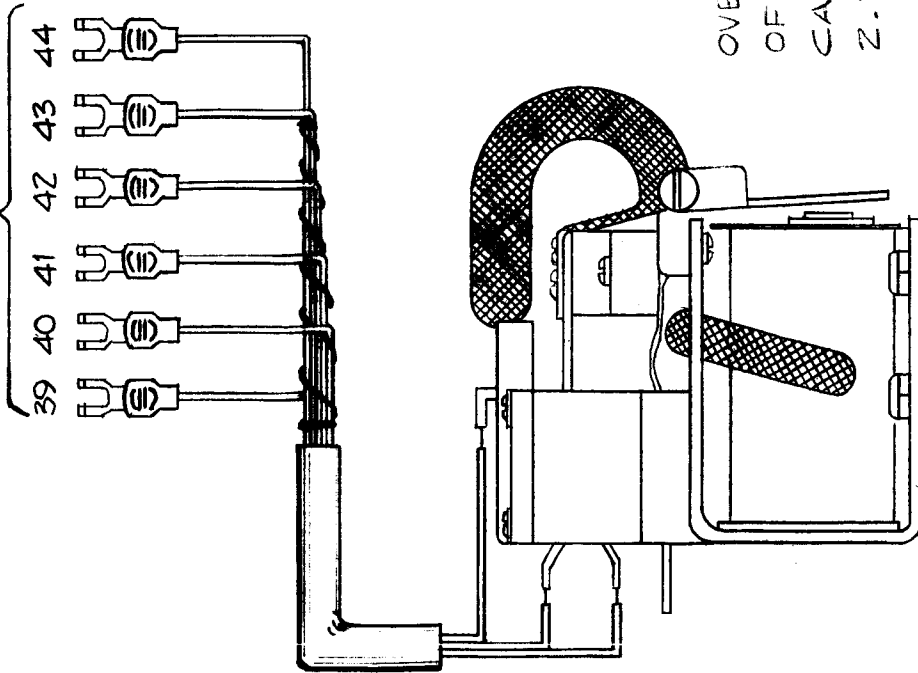
REQ. PER UNIT	MODEL	USED ON ASSY. NO.	DATE
1	6PT-4DK	AR-116	2-26-60

AR-117 C

REQ. ITEM	PART NO.	DESCRIPTION	SYMBOL
C		THE TECHNICAL MATERIEL CORP. MAMARONECK, NEW YORK	
B 4		PLATE OVLD RELAY ASSEMBLY	
A 1		RELAY SOLAID	
ISSUE ITEM	CHANGED FROM	DATE	CHECKER
		6/15/60	Cy JCB
TOLERANCES			
SCALE: ZA-1829			
MAXIMUM ALLOWABLE TOLERANCES HAVE BEEN DETERMINED AND ANY DEVIATIONS WILL BE CAUSE FOR REJECTION. REMOVE ALL BURRS AND SHARP EDGES			
DEC. DIM. ±			
FRAC. DIM. ±			
ANGULAR DIM. ±			
		TYPE & TEMPER	HEAT TREAT. SPEC.
		DRAWN	CHECKED
		FINAL APPROVAL	
		FINISH & SPEC. NO.	
			AR-117 C

REQ. PER UNIT	1	M DEL	GPT-40K	USED ON	AR-118
		ASSY. NO.	AR-116	DATE	2-26-60

To E 7605 of AR116



OVERALL DIMS.
OF RELAY LESS
CABLE - 2 x 1.250x
2.3125

NON-LATCH TYPE
CONTACT ARRANGEMENT -
4C (4 P.D.T.)
CONTACTS SILVER CADMIUM
MOISTURE RESISTANT VARNISH
ON COIL.

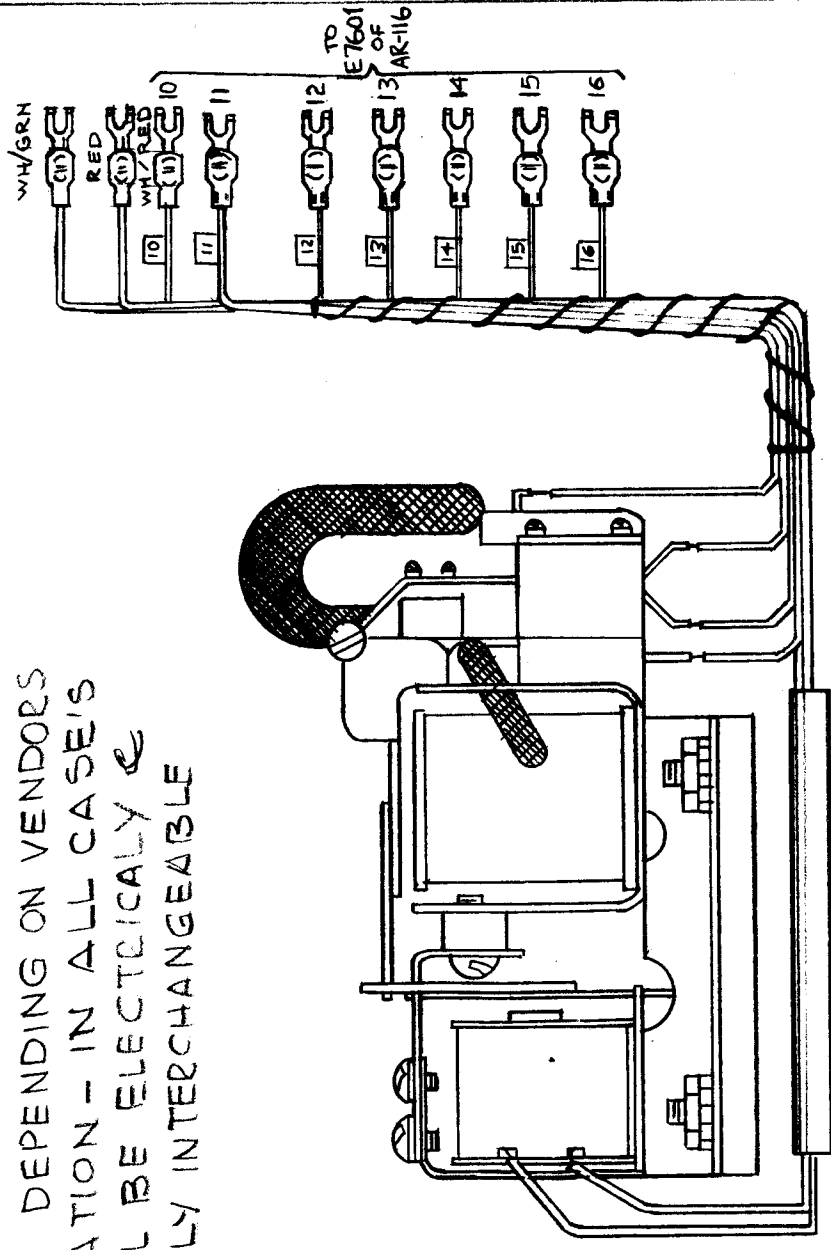
REQ. ITEM	PART NO.	DESCRIPTION	SYMBOL
		THE TECHNICAL MATERIEL CORP. MAMARONECK, NEW YORK	
		DRIVER INTERLOCK RELAY ASSY (RELAY SOLENOID)	
ISSUE ITEM	CHANGED FROM	DATE	CH. NO.
			1834
TOLERANCES			
DEC. DIM. ±	MAXIMUM ALLOWABLE TOLERANCES HAVE BEEN DETERMINED AND ANY DEVIATIONS WILL BE CAUSE FOR REJECTION. REMOVE ALL BURRS AND SHARP EDGES		
FRAC. DIM. ±			
ANGULAR DIM. ±			
	FINISH & SPEC. NO.	TYPE & TEMPER	HEAT TREAT. SPEC.
		DRAWN	CHECKED
		APPROVED	FINAL APPROVAL
			AR-118

AR-119 D

USED ON
REQ. PER UNIT 1
MODEL GPT-40X
ASSY. NO. AR-116
DATE 2-26-60

PHYSICAL APPEARANCE OF RELAYS
WILL VARY DEPENDING ON VENDORS
CONFIGURATION - IN ALL CASES
ASSY WILL BE ELECTRICALLY &
MECHANICALLY INTERCHANGEABLE

LATCH TYPE
CONTACT ARRANGEMENT
4C (4RDT.)
CONTACTS - SILVER
MOISTURE RESISTANT
VARNISH ON COILS.



Overall Dimension of Relay
Less Cable 3.8125 lg. x 2.219 W. x 2.4375 H.

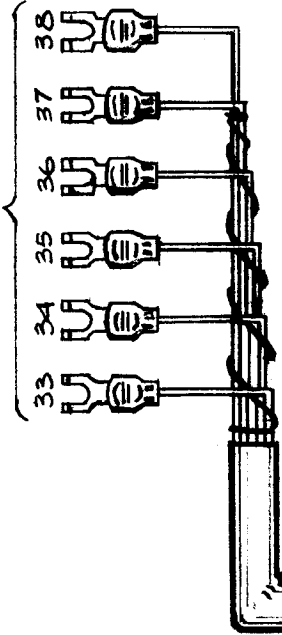
ISSUE ITEM	CHANGED FROM	DATE	CH. NO.	DRAFTS	CHECKER	ENG. APP.	REQ. ITEM	PART NO.	DESCRIPTION	SYMBOL		
D	NOTE ADD	10-31-85	2217	GD/L	JOB	JOB			THE TECHNICAL MATERIEL CORP. MAMARONECK, NEW YORK			
C	SEE EMN #10893	2-12-64	10893	AM	TR	JOB						
B	NO. 10 WIRE LEAD ADDED	7-25-60	2634	CU		JOB						
A	(2) LEADS ADDED RENUMBER LEADS 11-16	6-14-60	2460	CU	JOB	JOB			GRID OVLD RELAY ASSEMBLY (RELAY SOLENOID)			
TOLERANCES												
SCALE: ZA-1830												
MAXIMUM ALLOWABLE TOLERANCES HAVE BEEN DETERMINED AND ANY DEVIATIONS WILL BE CAUSE FOR REJECTION. REMOVE ALL BURRS AND SHARP EDGES												
DEC. DIM. ±												
FRAG. DIM. ±												
ANGULAR DIM. ±												
TYPE & TEMPER	HEAT TREAT. SPEC.	DRAWN					CHKD	APP. MECH.	DES. APP.	CHECKED	FINAL APPROVAL	
											AR-119	D

REQ. PER UNIT	1	MODEL	GPT-40K	USED ON ASSY. NO.	AR-116	DATE	2-29-60
							AR-120
							B

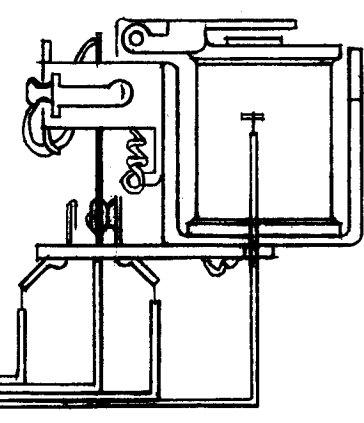
NON LATCH TYPE
 CONTACT ARRANGEMENT
 4C (4.P.D.T.)
 CONTACTS SILVER CADMIUM
 MOISTURE RESISTANT
 VARNISH ON COIL.

NOTE
 PHYSICAL APPEARANCE OF
 RELAYS WILL VARY
 DEPENDENING ON VENDORS
 CONFIGURATION - IN ALL
 CASES ASSY WILL BE
 ELECTRICALLY &
 MECHANICALLY INTERCHANGEBLE

To E7604 of AR-116



Over e/p Dims of
 Relay Less Cable
 1.9375 x 4375 x
 1.4375.



REQ. ITEM	PART NO.	DESCRIPTION	SYMBOL
		THE TECHNICAL MATERIEL CORP. MAMARONECK, NEW YORK	
		BIAS RELAY ASSEMBLY (RELAY SOLENOID)	
			28 m... <i>AB</i>
			DRAWN <i>GM</i> CHECKED FINAL APPR VAL
			ELEC. DES. APP MECH. DES. APP
			AR-120-B

ISSUE ITEM	CHANGED FROM	DATE	CH. NO.	DRAFTS	CHECKER	ENG. APP.
B	SHEET 2 OR COMPLETE	10-30-55	2213	GDL		
A	SHEET 2 & NOTE ADDED	3-16-58		GDL		

TYPE & TEMPER	HEAT TREAT. SPEC.	MATERIAL	FINISH & SPEC. NO.

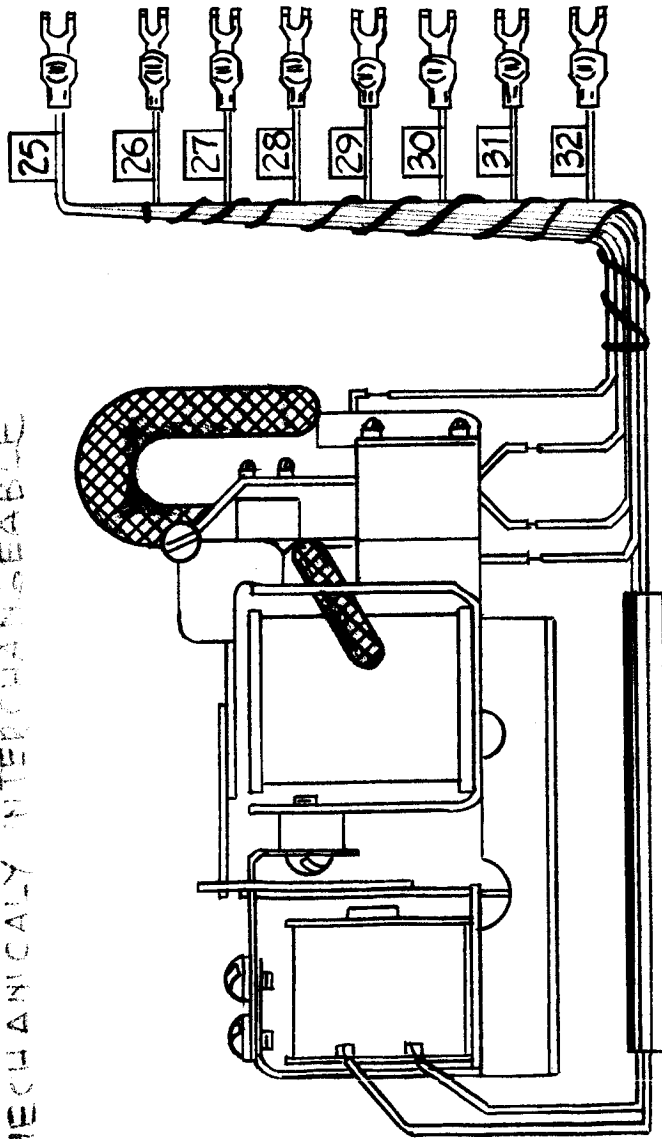
TOLERANCES	
DEC. DIM. ±	MAXIMUM ALLOWABLE TOLERANCES HAVE BEEN DETERMINED AND ANY DEVIATIONS WILL BE CAUSE FOR REJECTION. REMOVE ALL BURRS AND SHARP EDGES
FRAC. DIM. ±	
ANGULAR DIM. ±	

NOTE

REQ. PER UNIT	M DEL	USED ON	DATE
1	GPT-40 K	ASSY. NO. AR-116	4-12-60
			AR-121
			A

NOTE

PHYSICAL APPEARANCE OF RELAYS WILL VARY DEPENDING ON VENDORS CONFIGURATION IN ALL CASE'S ASSY WILL BE ELECTRICALLY & MECHANICALLY INTERCHANGEABLE



Mounting - $1\frac{1}{4} \times 1\frac{1}{2}$, 4 - $\frac{5}{32}$ D. Holes
 Overall Dimensions of Relay less
 Cable - 3812519 x 2.219W, x 2.4375.

LATCH TYPE
 CONTACT ARRANGEMENT - 4C (4.P.D.T.)
 CONTACTS SILVER CADMIUM
 MOISTURE RESISTANT
 YARNISH ON COILS.

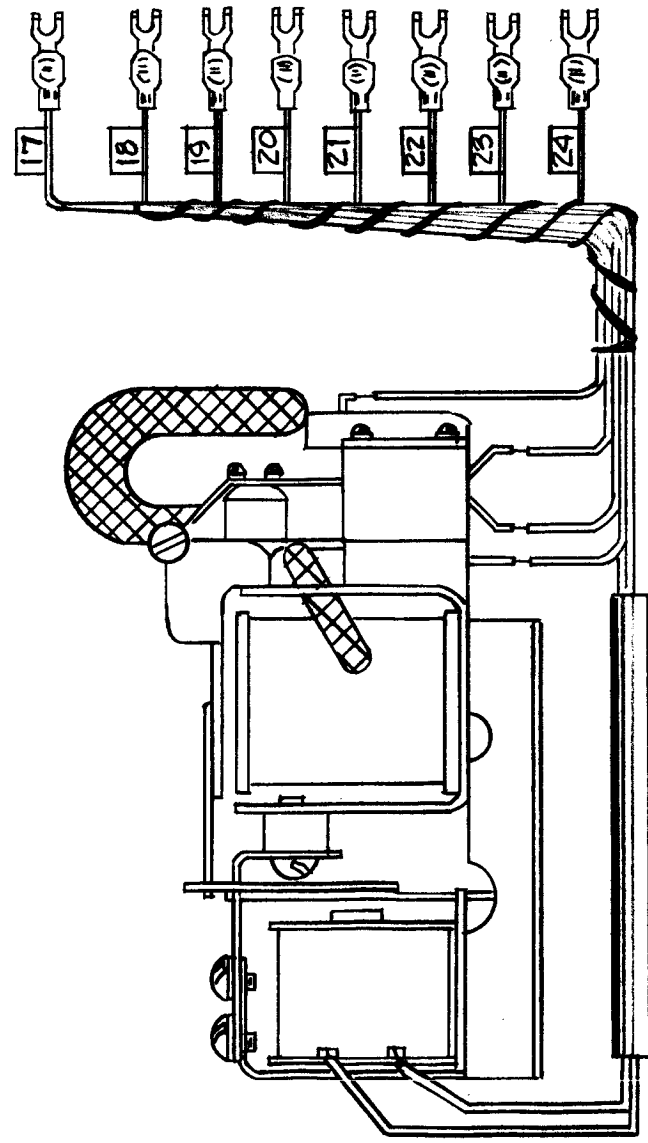
NOTE

REQ. ITEM	PART NO.	DESCRIPTION	SYMBOL
		THE TECHNICAL MATERIEL CORP.	
		MAMARONECK, NEW YORK	
		SWR RELAY ASSEMBLY	
ISSUE ITEM	CHANGED FROM		
A	NOTE ADP		
DATE	CH. NO.	DRAFTS	CHECKER
10-31-61	22116	GD	ENG. APP.
SCALE:		2A-1832	
TOLERANCES			
MAXIMUM ALLOWABLE TOLERANCES HAVE BEEN DETERMINED AND ANY DEVIATIONS WILL BE CAUSE FOR REJECTION. REMOVE ALL BURRS AND SHARP EDGES			
TYPE & TEMPER	HEAT TREAT. SPEC.	DRAWN	CHECKED
		10	
MATERIAL		FINAL APPROVAL	
		ELEC. DES. APP. MECH. DES. APP.	
		FINISH & SPEC. NO.	
		AR-121	
		A	

REQ. PER UNIT	M DEL	USED ON
1	GPT-40K	ASSY. NO.
		AR-116
		DATE
		4-11-60

AR-122

LATCH TYPE
 CONTACT ARRANGEMENT -
 4C (4.P.D.T.)
 CONTACTS SILVER CADMIUM
 MOISTURE RESISTANT
 VARNISH ON COILS.

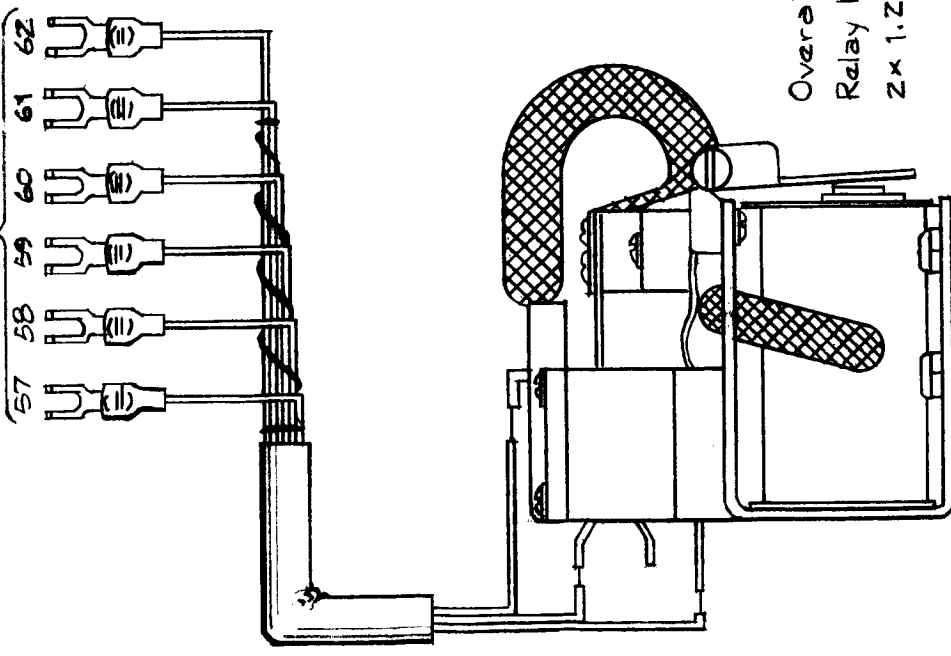


Mounting - 1/4 x 1/2, 4-5/32 D. HOLES
 Overall Dims of Relay less
 Cable - 3.8125lg, x2.219w x2.4375.

ISSUE ITEM	CHANGED FROM	DATE	CH. NO.	DRAFTS	CHECKER	ENG. APP.	REG. ITEM	PART NO.	DESCRIPTION	SYMBOL
TOLERANCES									THE TECHNICAL MATERIEL CORP.	
DEC. DIM. ±									MAMARONECK, NEW YORK	
FRAC. DIM. ±									RETUNE RELAY ASSEMBLY	
ANGULAR DIM. ±										
SCALE: 2A-1831										
MAXIMUM ALLOWABLE TOLERANCES HAVE BEEN DETERMINED AND ANY DEVIATIONS WILL BE CAUSE FOR REJECTION. REMOVE ALL BURRS AND SHARP EDGES										
TOLERANCES										
MATERIAL										
TYPE & TEMPER										
HEATTREAT.SPEC.										
FINISH & SPEC. NO.										
DRAWN										
CHECKED										
ELEC. DES. APP										
MECH. DES. APP										
FINAL APPROVAL										
AR-122										

REQ. PER UNIT	M DEL	USED ON
1	GPT-ADK	AR-123
	AR-116	B
	2-26-60	

To E7606 of AR-116



Overall dims of
Relay less Cable
2 x 1.250 x 2.3125

NON-LATCH TYPE
CONTACT ARRANGEMENT
4C (4.P.D.T.)
CONTACTS SILVER CADMIUM
MOISTURE RESISTANT VARNISH
ON COIL.

NOTE:
PHICAL APPEANCE ON RELAYS
WILL VARY DEPENDING ON VENDORS
CONFIGURATION, IN ALL CASE'S
ASSY WILL BE ELECTRICALLY &
MECHANICALLY INTERCHANGEABLE

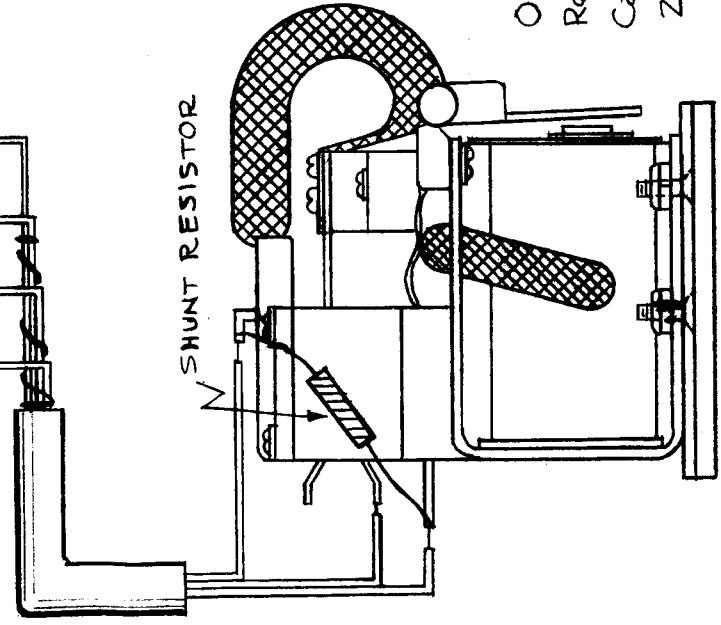
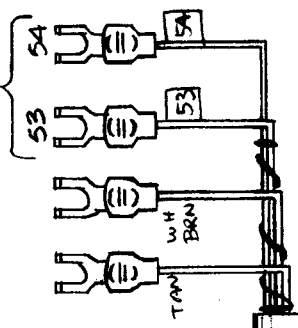
REQ. ITEM	PART NO.	DESCRIPTION	SYMBOL
B		THE TECHNICAL MATERIEL CORP. MAMARONECK, NEW YORK	
A		CROWBAR RELAY ASSY (RELAY SOLENOID)	
ISSUE ITEM	CH. NO.	DRAFTS	CHECKER
	5447	L.I.	RL
	6-21-58		GDL
	8/17/61		RL
SCALE: 2A-1837			
TOLERANCES			
MAXIMUM ALLOWABLE TOLERANCES HAVE BEEN DETERMINED AND ANY DEVIATIONS WILL BE CAUSE FOR REJECTION. REMOVE ALL BURRS AND SHARP EDGES			
DEC. DIM. ±			
FRAC. DIM. ±			
ANGULAR DIM. ±			
	TYPE & TEMPER	HEATTREAT.SPEC.	DRAWN
			GM
			DB
			AR-123
			B
	FINISH & SPEC. NO.	ELEC. DES. APP	MECH. DES. APP

REQ. PER UNIT	MODEL	USED ON
1	GPT-40K	AR-116
	ASSY. NO.	DATE
	AR-116	2-26-60

AR-124

B

To E 7606 of AR-116



Over Dims of
Relay less
Cable 2x1250x
2.3125

NON-LATCH TYPE
CONTACT ARRANGEMENT
4C (4 P.D.T.)
CONTACTS SILVER CADMIUM
MOISTURE RESISTANT VARNISH
ON COIL.

REQ. ITEM		PART NO.		DESCRIPTION		SYMBOL	
				THE TECHNICAL MATERIEL CORP.		MAMARONECK, NEW YORK	
B 6		2-12-64 10893 AM.		TUBE PROTECT RELAY ASSY		(RELAY SOLENOID)	
A 2		51852 DELETED					
A 1		SHUNT RESISTOR ADD					
ISSUE ITEM		CHANGED FROM	DATE	CH. NO.	DRAFTS	CHECKER	ENG. APP.
		SEE EMN 10893	2-14-60	2482		JCB	
TOLERANCES		SCALE: ZA-1850					
DEC. DIM. ±							
FRAC. DIM. ±							
ANGULAR DIM. ±							
		MAXIMUM ALLOWABLE TOLERANCES HAVE BEEN DETERMINED AND ANY DEVIATIONS WILL BE CAUSE FOR REJECTION. REMOVE ALL BURRS AND SHARP EDGES					
				TYPE & TEMPER		HEAT TREAT. SPEC.	
				FINISH & SPEC. NO.			
				DRAWN		CHECKED	
				FINAL APPR VAL			
				AR-124		B.	

AR-125

USED ON

ASSY. NO. DATE

AR-116 Z-26-60

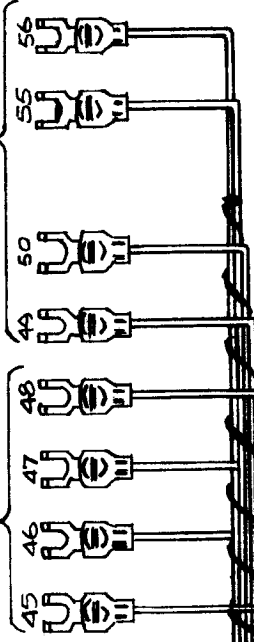
MODEL

QPT-40K

REQ. PER UNIT

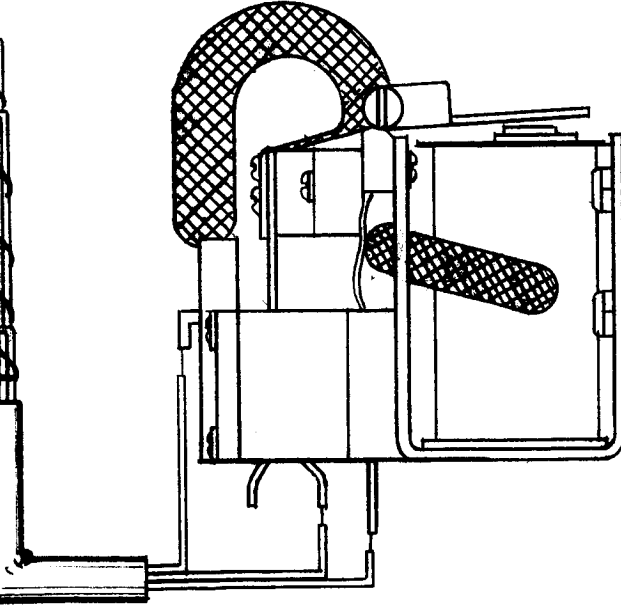
1

To E7605 of AR-116 To E7606 of AR-116



NON-LATCH TYPE
 CONTACT ARRANGEMENT-
 4C (4 P.D.T.)
 CONTACTS SILVER CADMIUM
 MOISTURE RESISTANT VARNISH
 ON COIL.

Overall Dims. of
 Relay less Cable
 Z x 1.250 x Z.3125



TOLERANCES

DEC. DIM. ±
 FRAC. DIM. ±
 ANGULAR DIM. ±

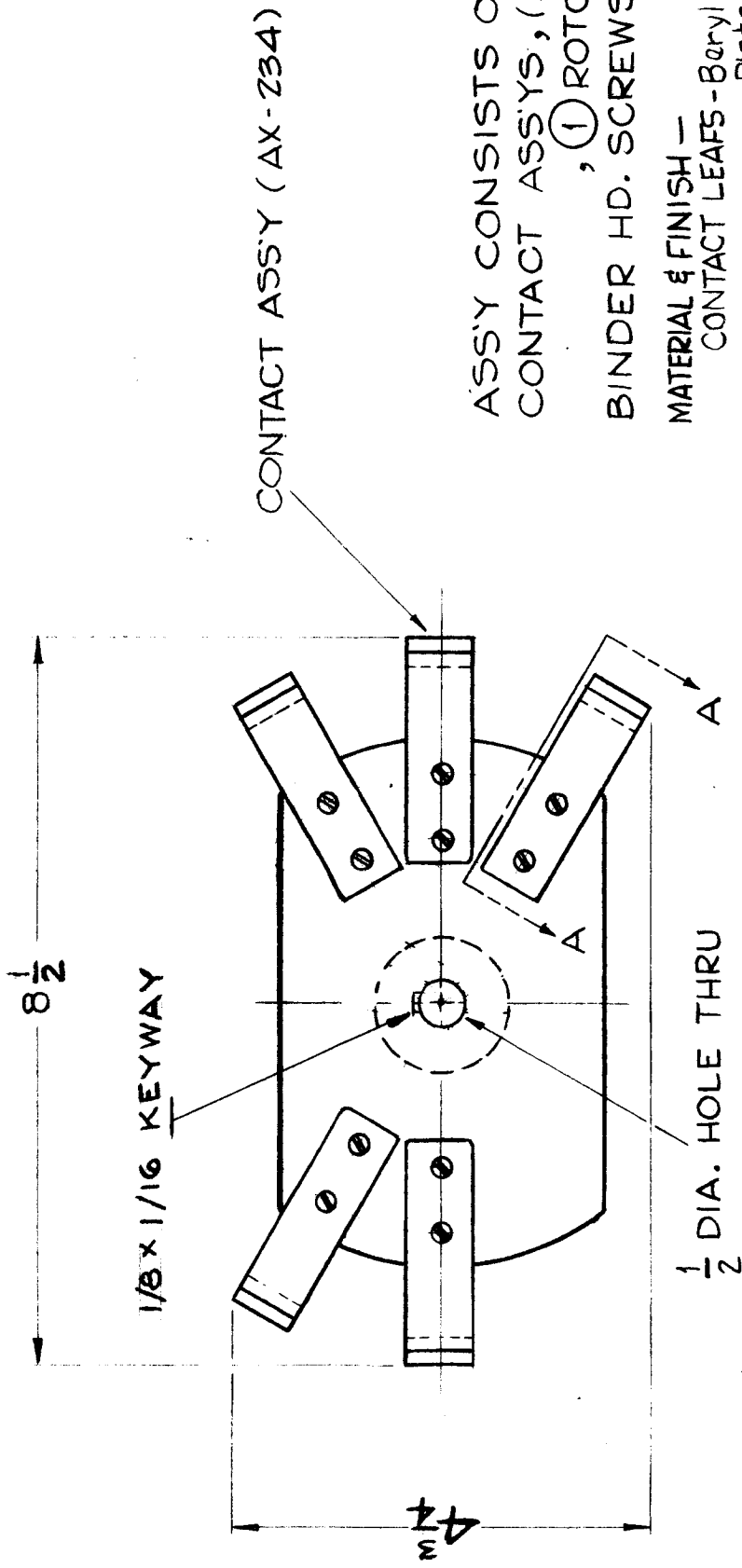
SCALE: Z A-1835

MAXIMUM ALLOWABLE TOLERANCES HAVE
 BEEN DETERMINED AND ANY DEVIATIONS
 WILL BE CAUSE FOR REJECTION.
 REMOVE ALL BURRS AND SHARP EDGES

DATE CH. NO. DRAFTS CHECKER ENG. APP.

REQ. ITEM	PART NO.	DESCRIPTION	SYMBOL
		THE TECHNICAL MATERIEL CORP.	
		MAMARONECK, NEW YORK	
		FINAL FILAMENT RELAY ASSY	
		(RELAY SOLENOID)	
		DRAWN <i>DDW</i>	FINAL APPR. VAL
		CHECKED <i>DDW</i>	AR-125
ISSUE ITEM	CHANGED FROM	ELEC. DES. APP. MECH. DES. APP.	

REQ. PER UNIT	M DEL	USED ON	DATE
1	GPT 40K	AT 101	3-4-60
ASSY. N.		AR-127 C	



CONTACT ASS'Y (AX-234)

ASS'Y CONSISTS OF ⑤ CONTACT ASS'YS, (AX-234), ① ROTOR, ⑩ 8-32 BINDER HD. SCREWS & LOCKWASHERS

MATERIAL & FINISH — CONTACT LEAFS - Beryllium Copper, Rhodium Plated

CONTACT SHOE - Brass, Rhodium Plated

ROTOR - Brass, Silver Plated

HARDWARE - Brass, Nickel Plated

REQ. ITEM	DESCRIPTION	PART NO.	SYMBOL
C	THE TECHNICAL MATERIEL CORP. MAMARONECK, NEW YORK		
B	ROTOR, ASS'Y		
A	ANTENNA TUNER		
ISSUE ITEM	J.C. Biele	DRAWN	CHECKED
TOLERANCES		TYPE & TEMPER	HEAT TREAT. SPEC.
DEC. DIM. ±		FINISH & SPEC. N.	
FRAC. DIM. ± 1/64		ELEC. DES. APP. MECH. DES. APP.	
ANGULAR DIM. ±		FINAL APPROVAL	

4/26/61
3-15
3/12/60

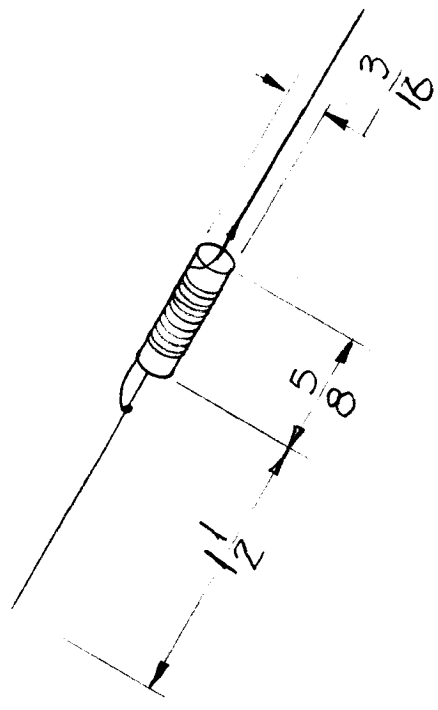
DELETED (2) 8-32
4 3/4 WAS 4 3/8
B-1/2 WAS 3 1/4

SCALE: 2A1849

MAXIMUM ALLOWABLE TOLERANCES HAVE BEEN DETERMINED AND ANY DEVIATIONS WILL BE CAUSE FOR REJECTION. REMOVE ALL BURRS AND SHARP EDGES

SYM	FUNCTION		USED ON		AR-128	A
	R7608	TUBE PROTECT RELAY SHUNT	MODEL	ASSY. N.		
			GPT-40K	AR-116	11-1-60	

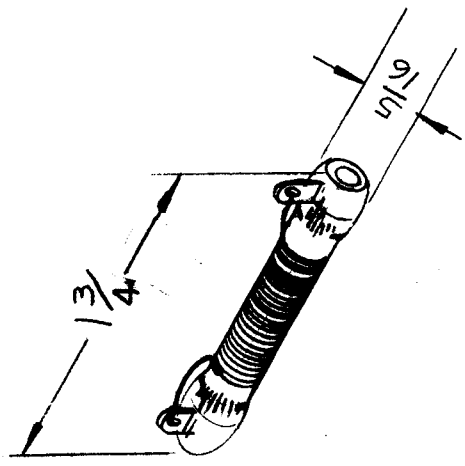
DC RESISTANCE - .07 OHMS \pm 5%
 CORE ~ POWDERED IRON



REQ. ITEM	PART NO.	DESCRIPTION	SYMBOL
A 1		THE TECHNICAL MATERIEL CORP. MAMARONECK, NEW YORK	
		RESISTOR, WIRE WOUND	
ISSUE ITEM	CHANGED FROM	MATERIAL	
DATE	CH. NO.	DRAFTS	CHECKER
2-1-62	6271	115	<i>[Signature]</i>
TOLERANCES		SCALE:	1A-1917
MAXIMUM ALLOWABLE TOLERANCES HAVE BEEN DETERMINED AND ANY DEVIATIONS WILL BE CAUSE FOR REJECTION. REMOVE ALL BURRS AND SHARP EDGES			
DEC. DIM. \pm			
FRAC. DIM. \pm			
ANGULAR DIM. \pm			
	FINISH & SPEC. NO.	TYPE & TEMPER	HEAT TREAT. SPEC.
		DRAWN	CHECKED
		<i>[Signature]</i>	<i>[Signature]</i>
			FINAL APPROVAL
			AR-128
			A

SYM	FUNCTION	USED ON	SYMB L
R-7609	PLATE OVL. COIL SHUNT	ASBY. NO.	AR-130
		M DEL	A
		AR-116	
		DATE	6-15-60

DC RESISTANCE - .185 OHMS. $\pm 10\%$
 MAX. CURRENT - 5 AMPS

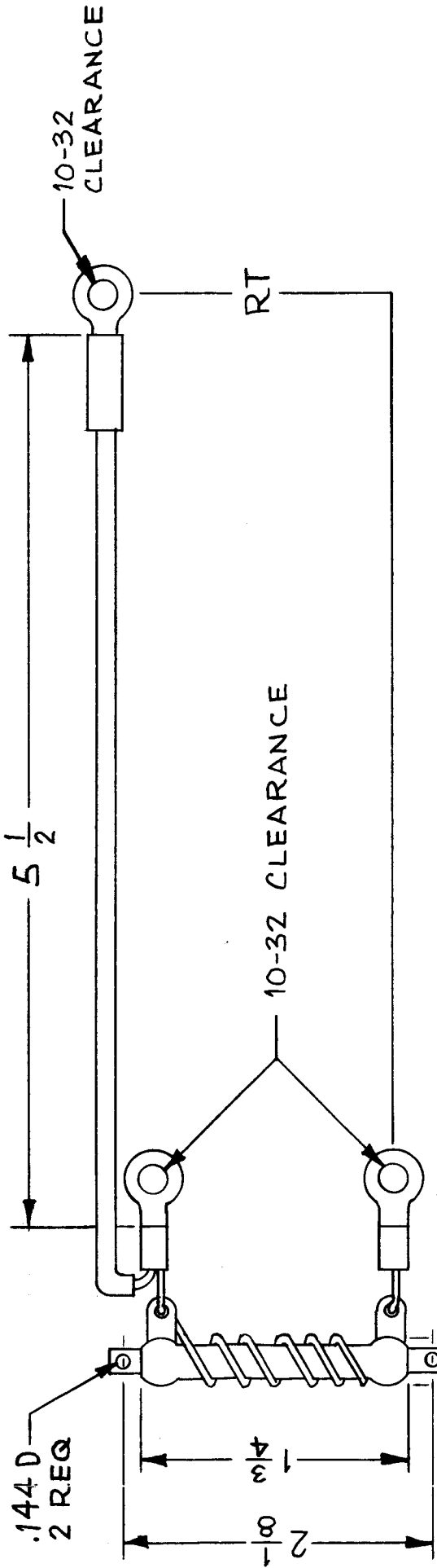


DC RESIST. WAS $\pm 5\%$
 TOLERANCES
 MAXIMUM ALLOWABLE TOLERANCES HAVE BEEN DETERMINED AND ANY DEVIATIONS WILL BE CAUSE FOR REJECTION. REMOVE ALL BURRS AND SHARP EDGES

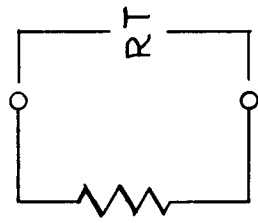
REQ. ITEM	CH. NO.	DATE	DRAFTS	CHECKER	ENG. APP.	PART NO.	DESCRIPTION	SYMB L
A	17459	12-13-66	RME	JCB	DRB		THE TECHNICAL MATERIEL CORP. MAMARONECK, NEW YORK RESISTOR, WIRE WOUND	
DC RESIST. WAS $\pm 5\%$								
TOLERANCES								
MAXIMUM ALLOWABLE TOLERANCES HAVE BEEN DETERMINED AND ANY DEVIATIONS WILL BE CAUSE FOR REJECTION. REMOVE ALL BURRS AND SHARP EDGES								
DEC. DIM. \pm								
FRAC. DIM. \pm								
ANGULAR DIM. \pm								
ISSUE ITEM	CHANGED FROM	DATE	CH. NO.	DRAFTS	CHECKER	ENG. APP.	SCALE:	
							1A-2010	
MATERIAL								
DRAWN						DM		
CHECKED						JW		
HEAT TREAT. SPEC.								
TYPE & TEMPER.								
FINISH & SPEC. NO.								
ELEC. DES. APP.								
MECH. DES. APP.								
FINAL APPROVAL								
							AR-130	A

REQ. PER UNIT 2	MODEL	USED ON
	APP-4	ASSY. NO.
	A-2033	DATE
		12-9-60

AR-132 D



SPECIFICATION
 MAX. CURRENT 20A @ 115V
 RT - NOT RATED

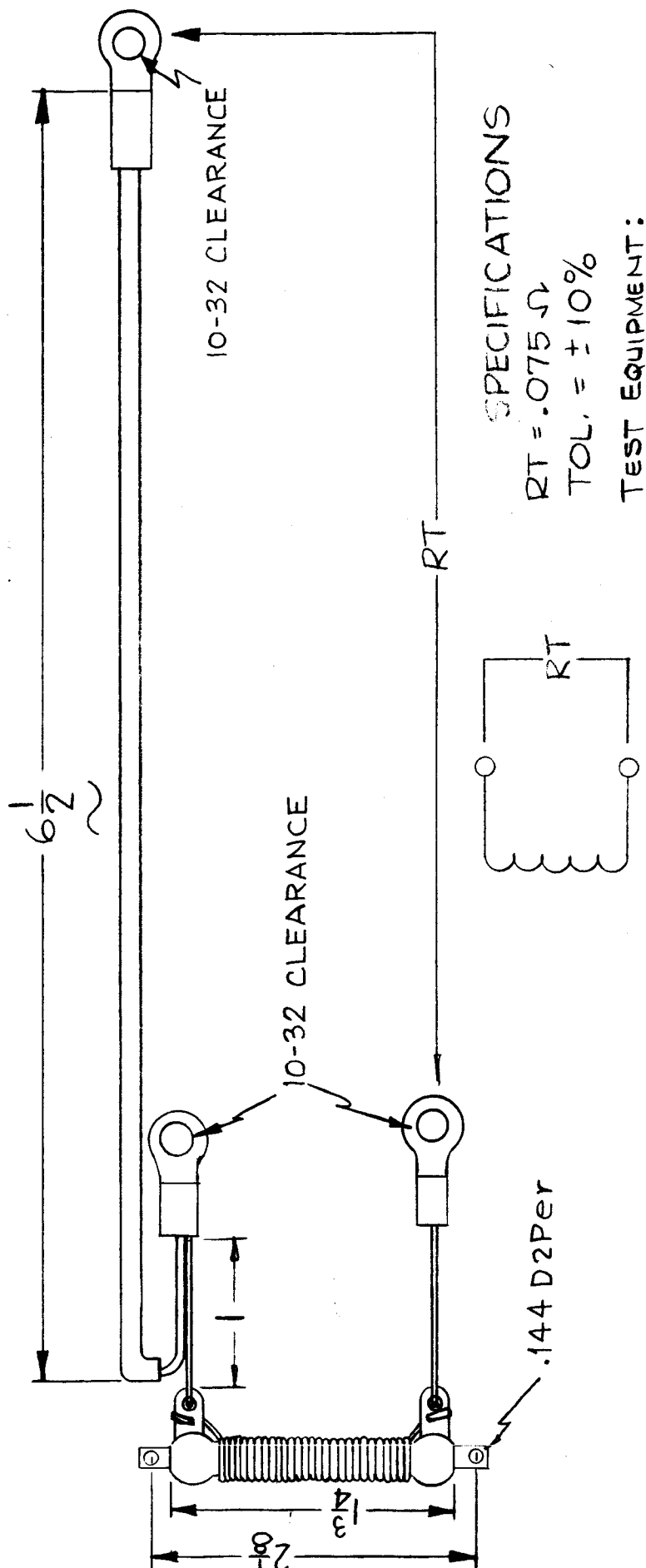


REQ. ITEM	PART NO.	DESCRIPTION	SYMBOL
D		CHG'D TERMINATION OF 5 1/2 DIM 11/466 RME	
C		REDRAWN W/O CHANGE 1/22/65 LAST REV. WAS "C"	
SYM	DESCRIPTION	SCALE	
	UNLESS OTHERWISE SPECIFIED DIMENSIONS ARE IN INCHES AND INCLUDE CHEMICALLY APPLIED OR PLATED FINISHES		
	FRACTIONS ± 1/64 ANGLES ± 0° 30'		
	DECIMALS X ± .05 XX ± .01 XXX ± .005		
	TOLERANCES		
	CODE	2A-2033	
	DATE	11/4/66	
	CH. NO.	17184	
	DRAFTS	RME	
	CHECKER	JH	
	ERG. APP.		
	MATERIAL		
	HEAT TREAT. SPEC.		
	TYPE & TEMPER		
	DRAWN	WJF	
	CHECKED	JH	
	FINAL APPROVAL	JH	
	ELEC. DES. APP.		
	MECH. DES. APP.		
	FINISH & SPEC. NO.		
			AR-132 D

THE TECHNICAL MATERIEL CORP.
 MAMARONECK, NEW YORK

SHUNT POWER UNIT

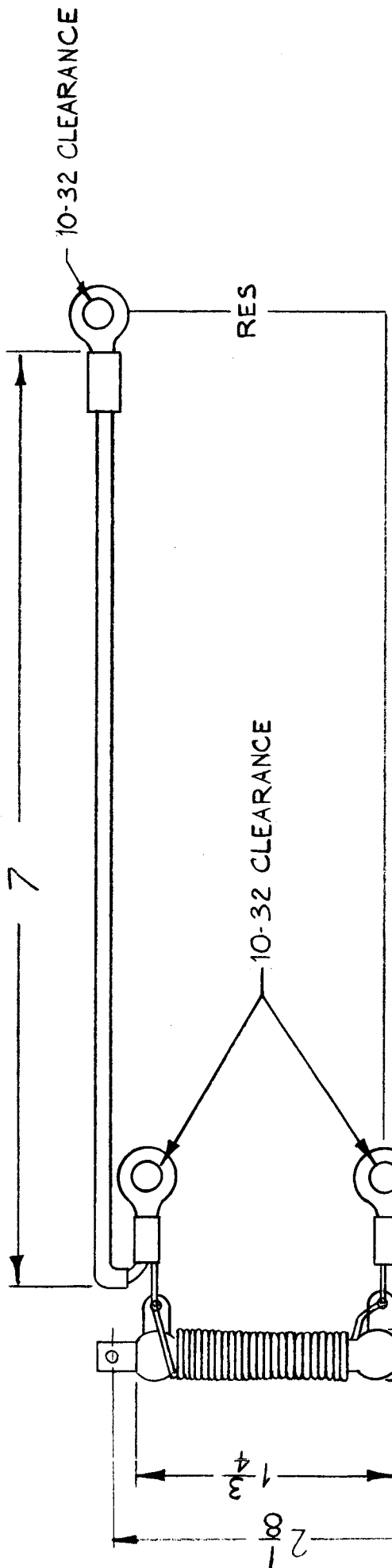
REQ. PER. UNIT	USED ON	AR 133	C
2	MODEL	APP-4	
	ASSY. NO.	A-2034	
	DATE	12-9-60	



SPECIFICATIONS
 $RT = .075 \Omega$
 $TOL. = \pm 10\%$
TEST EQUIPMENT:
 WHEATSTONE BRIDGE, MODEL RN-1
 INDUSTRIAL INSTRUMENTS OR EQUIV.

ISSUE ITEM	CHANGED FROM	DATE	CH. NO.	DRAFTS	CHECKER	ENG. APP.	REQ. ITEM	PART NO.	DESCRIPTION	SYMBOL	
C	6-1/2 WAS 7-1/2	12-20-60	17546	WHD					THE TECHNICAL MATERIEL CORP. MAMARONECK, NEW YORK		
B	ADD TEST EQUIP.	7-13-66	6532	HJA					SHUNT POWER INPUT		
A	Added Schematic SPEC BK 15 Added DIMS HOLD SIZES	3/14/61	4425	DWM							
TOLERANCES		SCALE: 2A-2034		CHECKER		DATE		MATERIAL		DRAWN	
DEC. DIM. \pm		MAXIMUM ALLOWABLE TOLERANCES HAVE BEEN DETERMINED AND ANY DEVIATIONS WILL BE CAUSE FOR REJECTION.		2A-2034		12-9-60		SAW		CHECKED	
FRAC. DIM. \pm		REMOVE ALL BURRS AND SHARP EDGES								AR 133	
ANGULAR DIM. \pm										C	
								FINISH & SPEC. NO.		ELEC. DES. APP. MECH. DES. APP.	

REQ. PER UNIT	USED ON	AR-134	B
2	ASBY. NO.	APP-5	
	MODEL		
	DATE	3-3-61	



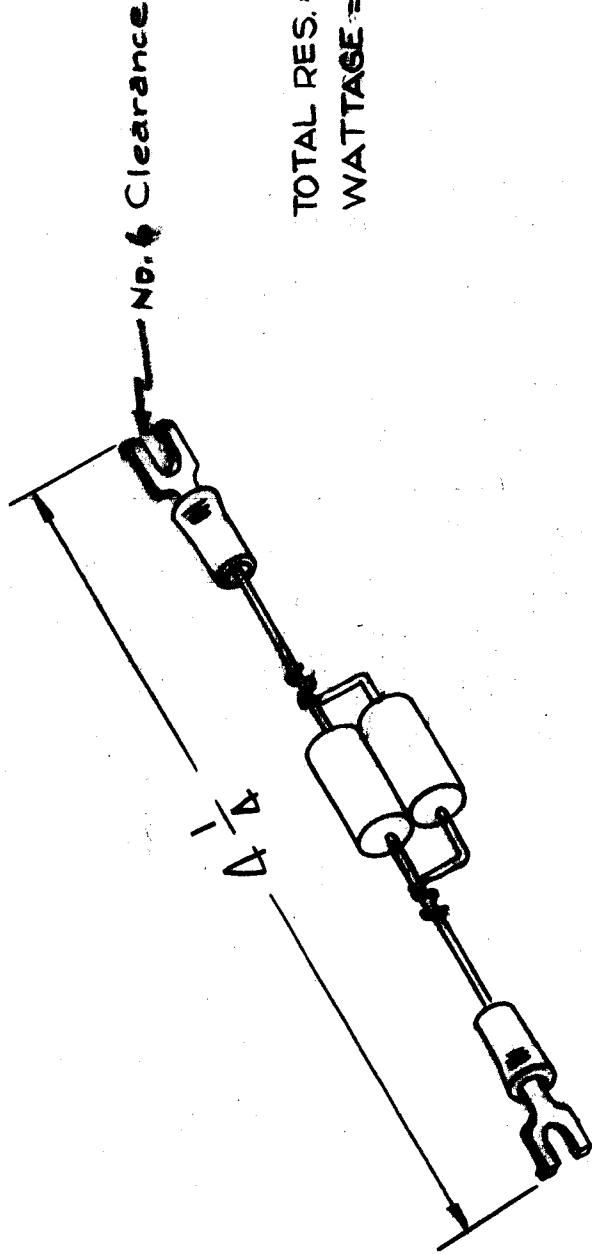
SPECIFICATIONS:
 RES ~ .011 Ω AT 10 AMP (AC)
 TOLERANCE ~ +5%, -1%
 CURRENT CARRYING
 CAPACITY MAX ~ 10A @ 115V

REQ. ITEM	DESCRIPTION	PART NO.	SYMBOL
B	THE TECHNICAL MATERIEL CORP. MAMARONECK, NEW YORK		
A	SHUNT POWER INPUT		
ISSUE ITEM	MATERIAL		
	TYPE & TEMPER		
	HEATTREAT. SPEC.		
	FINISH & SPEC. NO.		
	ELEC. DES. APP		
	MECH. DES. APP		

21117 WAS 6 1/2	1/5/71	20188	GE	CW	DEF
ADD 1 3/8 DIM	3/19/6	4426	JDM	gcb	RK
ADD MFG BR DIM. 2/8					
ADD MFG BRACKETS					
CHANGED FROM	DATE	CH. NO.	DRAFTS	CHECKER	ENG. APP.
TOLERANCES					
SCALE: 2A-2067					
MAXIMUM ALLOWABLE TOLERANCES HAVE BEEN DETERMINED AND ANY DEVIATIONS WILL BE CAUSE FOR REJECTION. REMOVE ALL BURRS AND SHARP EDGES					
DEC. DIM. ±					
FRAC. DIM. ±					
ANGULAR DIM. ±					
	W.A.F.	A.S.	CON KOK		
	DRAWN	CHECKED			
	RK				
	FINAL APPROVAL				
	AR-134				
	B				

AR-135

DATE	3-9-61
BY	3-9-61
APPROVED	



TOTAL RES. = 600 Ω
WATTAGE = 2 W

ISSUE	ITEM	CHANGED FROM	DATE	CH. NO.	DRAFTS	CHECKER	ENG. APP.
TOLERANCES							
DEC. DIM. ±							
FRAC. DIM. ±							
ANGULAR DIM. ±							
REG. ITEM	PART NO.	DESCRIPTION					
STOCK SIZE		THE TECHNICAL MATERIEL CORP.					
MATERIAL		MAMARONECK, NEW YORK					
TYPE & TEMPER		RESISTIVE TERMINATION ASSY					
HEAT TREAT. SPEC.		RUZZO	70S	DRAWN			
FINISH & SPEC. N.		70		CHECKED			
		16		FINAL APPROVAL			
				AR-135			

AR-157 0

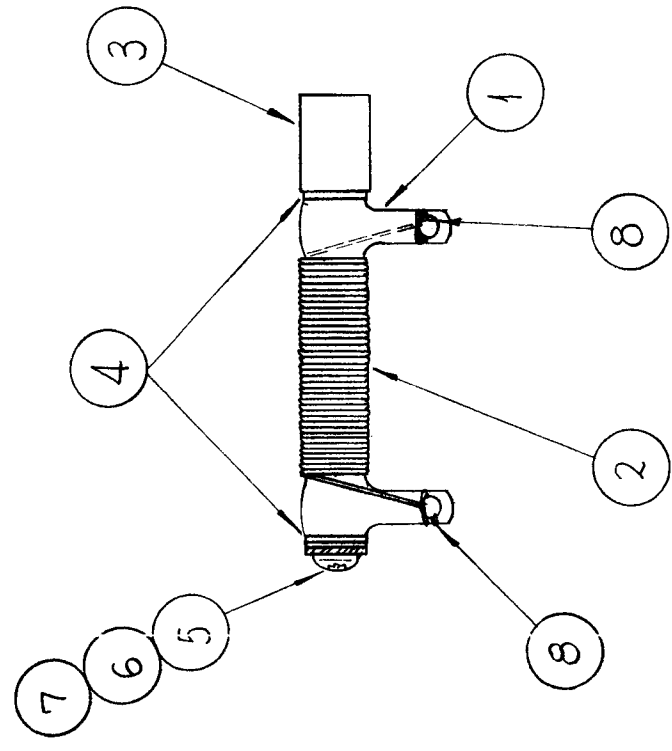
REQ. PER UNIT	MODEL	USED ON ASSY. NO.	DATE
1	GPT-200K	AR-137	2-14-64
1	GPT-200K	AR-138	2-14-64

PROCEDURE

- 1~CLOSE WIND 40 TURNS OF ITEM 2 AROUND ITEM 1 AND SECURE WITH ITEM 8 AS SHOWN.
- 2~COAT WINDING WITH ITEM 9 (INSULEX)
- 3~BAKE FOR 1/2 HOUR AT 250°F.

TEST:

- R-(DC)-1Ω ± 5%
- I - MAX 10 AMPS

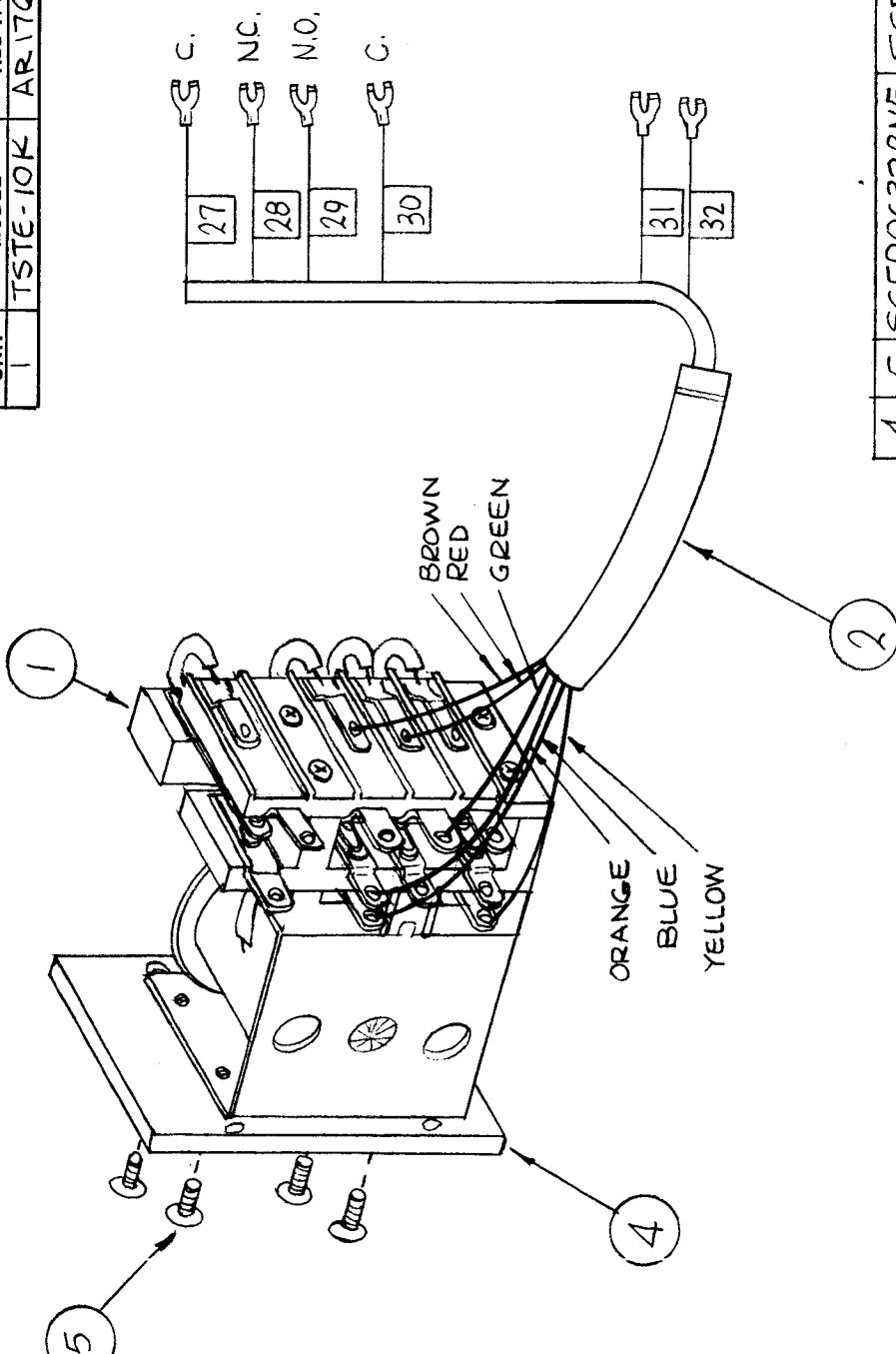


REQ. ITEM	PART NO.	DESCRIPTION	SYMBOL
X 9	GL-104-2	INSULEX, U-85	
X 8	BS-100	SOLDER, SOFT	
1 7	SCBPO632BN34	SCREW, MACHINE	
1 6	LWE06MRN	LOCKWASHER, EXTERNAL TOOTH	
1 5	FW06LBN	WASHER, FLAT	
2 4	WA-102-4	WASHER, FIBER, SHOULDER	
1 3	NS 3W01-04	INSULATOR STANDOFF ROUND	
X 2	WI-125-10	WIRE, CEROC "T"	
1 1	RW-109-24	RESISTOR, FIXED, W.W. 10 WATTS	

F. BUDETTI		DESCRIPTION		SYMBOL	
THE TECHNICAL MATERIEL CORP.		MAMARONECK. NEW YORK			
RESISTOR, ASS'Y					
SRG	LD	RAC			
DRAWN	CHECKED	FINAL APPROVAL			
TYPE & TEMPER	HEAT TREAT. SPEC.	ELEC. DES. APP.	MECH. DES. APP.		
				AR-157	0
FINISH & SPEC. NO.					

0	ORIGINAL RELEASE FOR PROD.	4-24-64	DATE	CH. NO.	DRAFTS	CHECKER	ENG. APP.
X	ITEM 3 WAS WI-125-5, 40 TURNS WAS 43, ITEM 9 ADDED	3-1-64	DATE				
A	REDRAWN & REVISED		DATE				
SYM	DESCRIPTION	SCALE	1" = 1"				
UNLESS OTHERWISE SPECIFIED DIMENSIONS ARE IN INCHES AND INCLUDE CHEMICALLY APPLIED OR PLATED FINISHES							
TOLERANCES		FRACTIONS		CODE			
.XX ± .01		± 1/64		A			
.XXX ± .005		± 0° 30'					

REQ. PER UNIT	1
MODEL	TSTE-10K
ASSY. NO.	AR176
DATE	3-29-66
USED ON	AR175
Ø	Ø



4	5	SCFP06328N5	SCREW, MACHINE		
1	4	MS4596	PLATE, MTG RELAY		
X	3	BS100	SOLDER, TIN ALLOY		
1	2	CA1132	WIRING HARNESS, BRANCHED		
1	1	RL165-1A	RELAY, ARM.		
REQ. ITEM	PART NO.	F. BUDETTI DESCRIPTION		SYMBOL	
			THE TECHNICAL MATERIEL CORP. MAMARONECK, NEW YORK		
			RELAY ARM. ASSY		
			RELAY ARM. ASSY		
			DRAWN: <i>[Signature]</i>		
			CHECKED: <i>[Signature]</i>		
			FINAL APPROVAL: <i>[Signature]</i>		
			AR175		
			Ø		

DATE	3-29-66	CH. NO.	4	DRAFTS	JE	CHECKER	JE	ENG. APP.	
SCALE	X2	DATE	3-29-66	CH. NO.	X2	DRAFTS	JE	CHECKER	JE
DESCRIPTION	ORIGINAL RELEASE FOR PRODUCTION REDRAWN	DATE	3-29-66	CH. NO.	X2	DRAFTS	JE	CHECKER	JE
UNLESS OTHERWISE SPECIFIED DIMENSIONS ARE IN INCHES AND INCLUDE CHEMICALLY APPLIED OR PLATED FINISHES									
TOLERANCES									
FRACTIONS ± 1/64 ANGLES ± 0° 30'									
C									
FINISH & SPEC. NO.									
ELEC. DES. APP. MECH. DES. APP.									

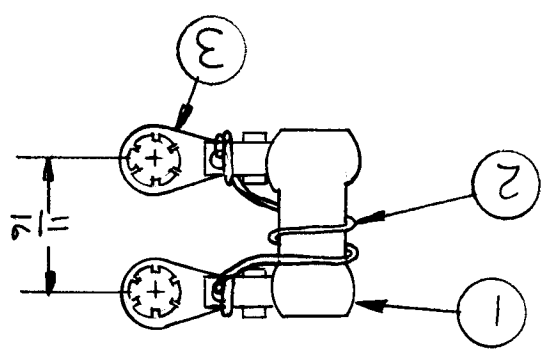
NOTICE TO PERSONS RECEIVING THIS DRAWING
 THE TECHNICAL MATERIEL CORPORATION claims proprietary right in the material disclosed hereon. This drawing is issued in confidence for engineering information only and may not be reproduced or used to manufacture anything shown hereon without permission from THE TECHNICAL MATERIEL CORPORATION to the user. This drawing is loaned for mutual assistance and is subject to recall at any time.

SCALE	
SIZE	A
CODE IDENT. NO.	82679
DWG NO.	AR196
ISSUE	0

FINISH	DRAWN	<i>[Signature]</i>	DATE	12/27/71
	CHECKED		DATE	
MATERIAL	ELECT. DES.	<i>[Signature]</i>	DATE	12/27/71
	MECH. DES.		DATE	
DECIMALS X ± .05 XX ± .01 XXX ± .005	FINAL APPROVAL	<i>[Signature]</i>	DATE	12/27/71
	FRACTIONS 1/64 TOLS. 9°-30'			

LIST OF MATERIAL				
SYMBOL	DESCRIPTION	PART NUMBER	REQ'D	ITEM
	INSULEX, VBS	6L104-2	5	
	SOLDER, TIN ALLOY	BS100	4	
	TERM LUG	TE112-4	3	2
	WIRE, ELEC, CEROC	WI125-1	2	
	RES, FXD, W	RW107-10	1	1

1. FLATTEN END OF LUGS.
2. LOCK LUGS ON STUDS 1/16 APART OR USE SUGG AS FIG.
3. LINE UP HOLES IN LUGS & RESISTOR.
4. BEND END OF LUGS AROUND RESISTOR.
5. TABS & TACK SOLDER.
6. WRAP WIRE 1/2-2 TURNS THRU HOLE & AROUND LUG & RESISTOR TAB. SOLDER.
7. WRAP 2 TURNS AROUND RESISTOR.
8. FEED WIRE THRU HOLE & WRAP 1/2-2 TURNS AROUND OTHER LUG & RESISTOR TAB. SOLDER.
9. COAT WITH 6L104-2 & BAKE



APPLICATION		REVISIONS			
QTY	MODEL USED ON	ASS'Y NO.	LTR	DESCRIPTION	DATE
2	HFLA-1K	AP152	0	ORIGINAL RELEASE	5/15/71

NOTICE TO PERSONS RECEIVING THIS DRAWING
 THE TECHNICAL MATERIEL CORPORATION claims proprietary right in the material disclosed hereon. This drawing is issued in confidence for engineering information only and may not be reproduced or used to manufacture anything shown hereon without permission from THE TECHNICAL MATERIEL CORPORATION to the user. This drawing is loaned for mutual assistance and is subject to recall at any time.

SCALE OF SHEET OF
 SIZE A CODE IDENT. NO. 82679 DWG. NO. AR197
 ISSUE

FINISH MATERIAL DEGRALS FRACTIONS .X ± .05 TOLS. 1/64 .XX ± .01 ANGLES .005 ± .30°
 UNLESS OTHERWISE SPECIFIED DIMENSIONS ARE IN INCHES AND INCLUDE CHEMICALLY APPLIED OR PLATED FINISHES

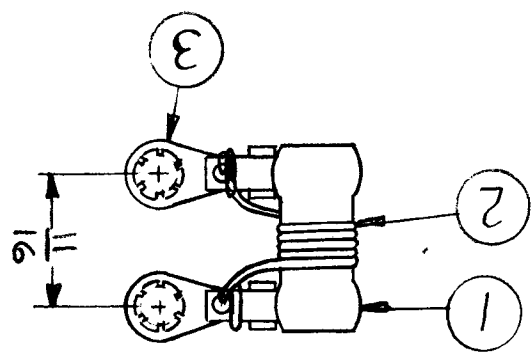
DATE 15 May 71	MECH. DES.
DATE 15 May 71	ELECT. DES.
DATE 16 Feb 71	DRAWN

SHUNT CIRCUIT BKR
 230 VAC
 THE TECHNICAL MATERIEL CORP.
 MAMARONECK, NEW YORK

BUDGET LIST OF MATERIAL

REQD	ITEM	PART NUMBER	DESCRIPTION	SYM.
1	1	RW107-10	RES FXD W	
2	2	WI125-7	WIRE, ELEC, CEROC	
2	3	TE112-A	TERM LUG	
	4	BS100	SOLDER, TIN ALLOY	
	5	GL104-2	INSULEX, U85	

1. FLATTEN END OF LUGS.
2. LOCK LUGS ON STUDS $\frac{1}{16}$ APART OR USE SW 261 AS JIG.
3. LINE UP HOLES IN LUGS & RESISTOR BEND END OF LUG AROUND RESISTOR TAB & TACK SOLDER.
4. WRAP WIRE $1\frac{1}{2}$ -2 TURNS THRU HOLE & AROUND LUG & RESISTOR. SOLDER.
5. WRAP 5 TURNS AROUND RESISTOR.
6. FEED WIRE THRU HOLE & WRAP $1\frac{1}{2}$ -2 TURNS AROUND OTHER LUG & RESISTOR. SOLDER.
7. COAT WITH GL104-2 & BAKE.



QTY	2	MODEL USED ON	HFLA-1K	ASSY. NO.	AP152	LTR	ORIGINAL RELEASE	DATE	5/15/71	E.M.N. NO.	DRAFT	CHKD	APPD
APPLICATION													
REVISIONS													