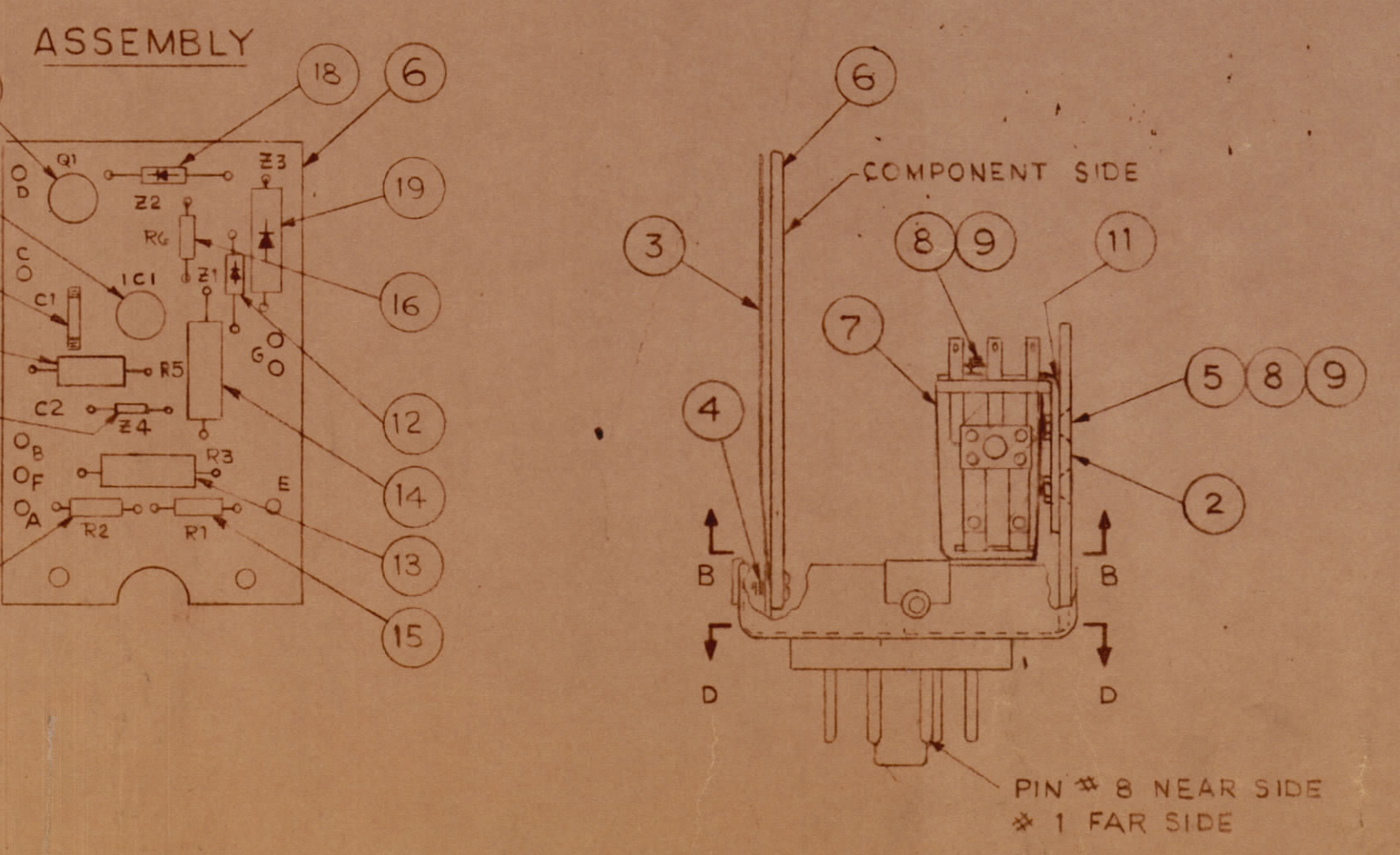
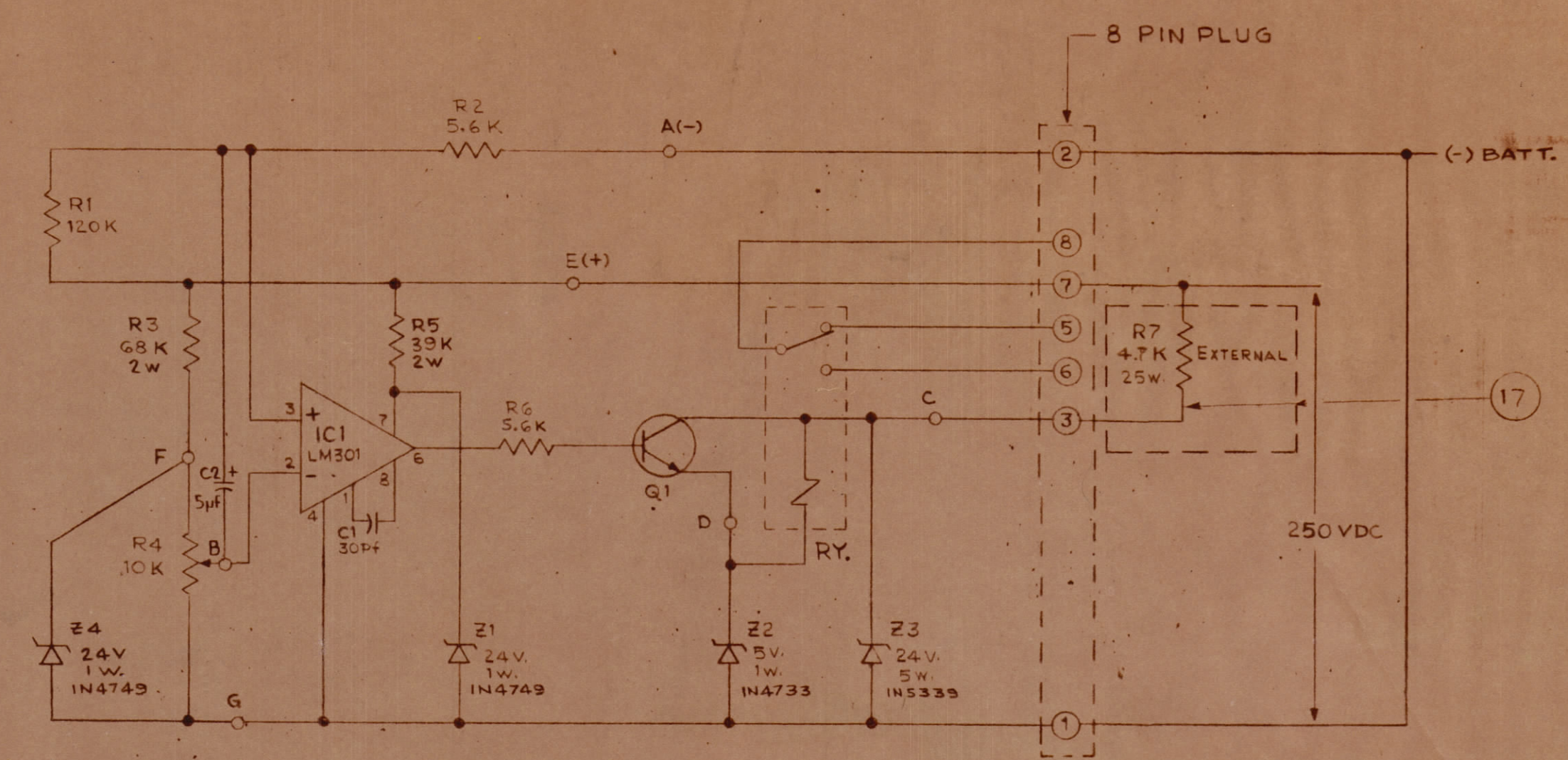
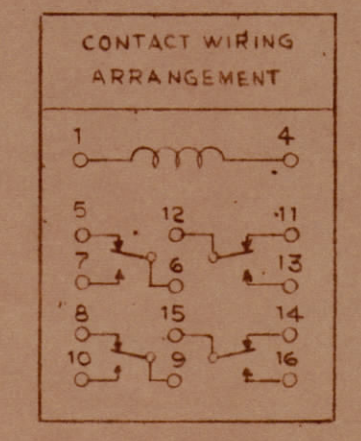
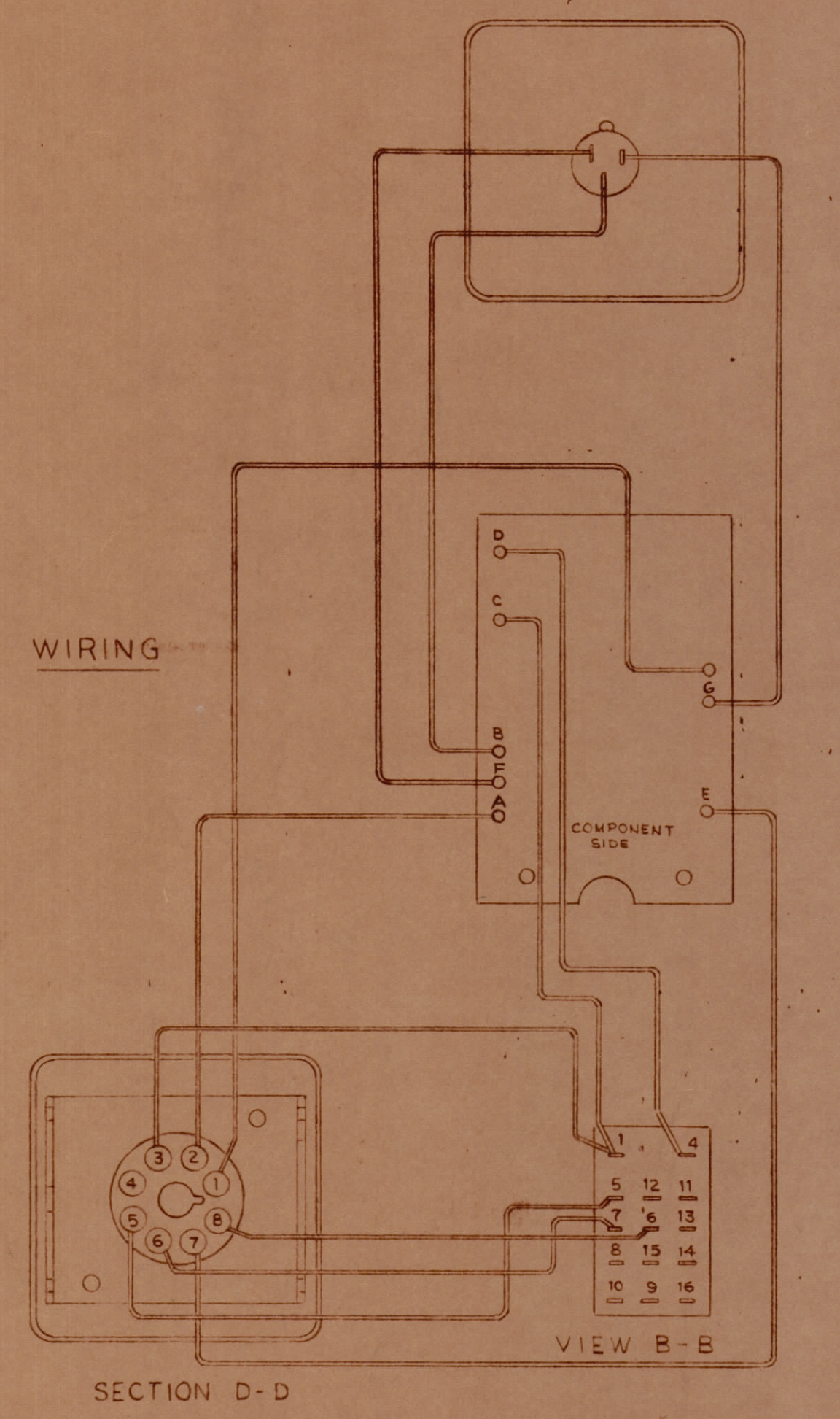
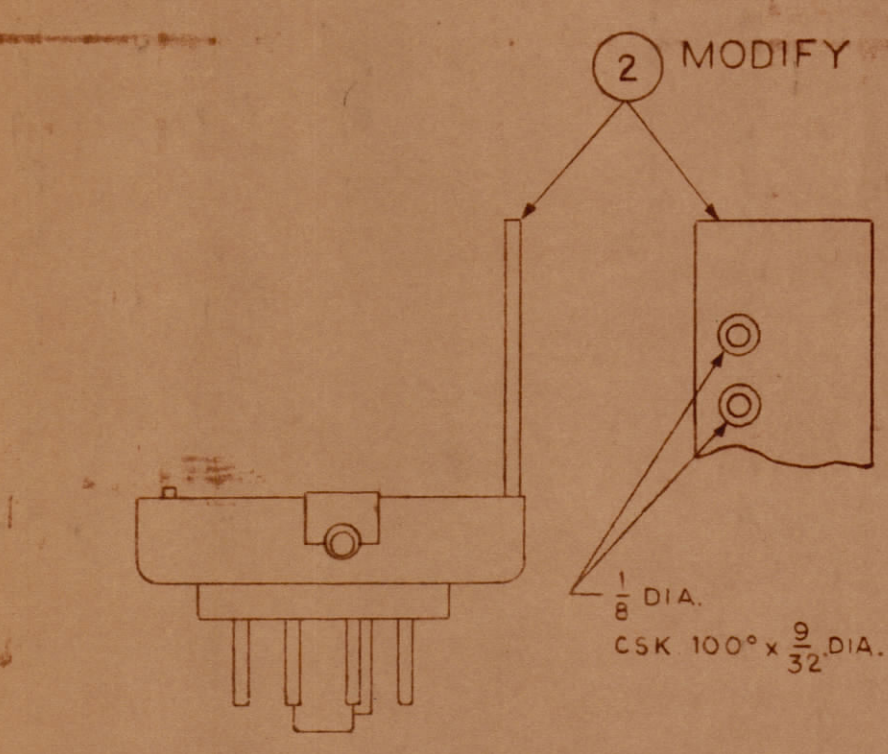
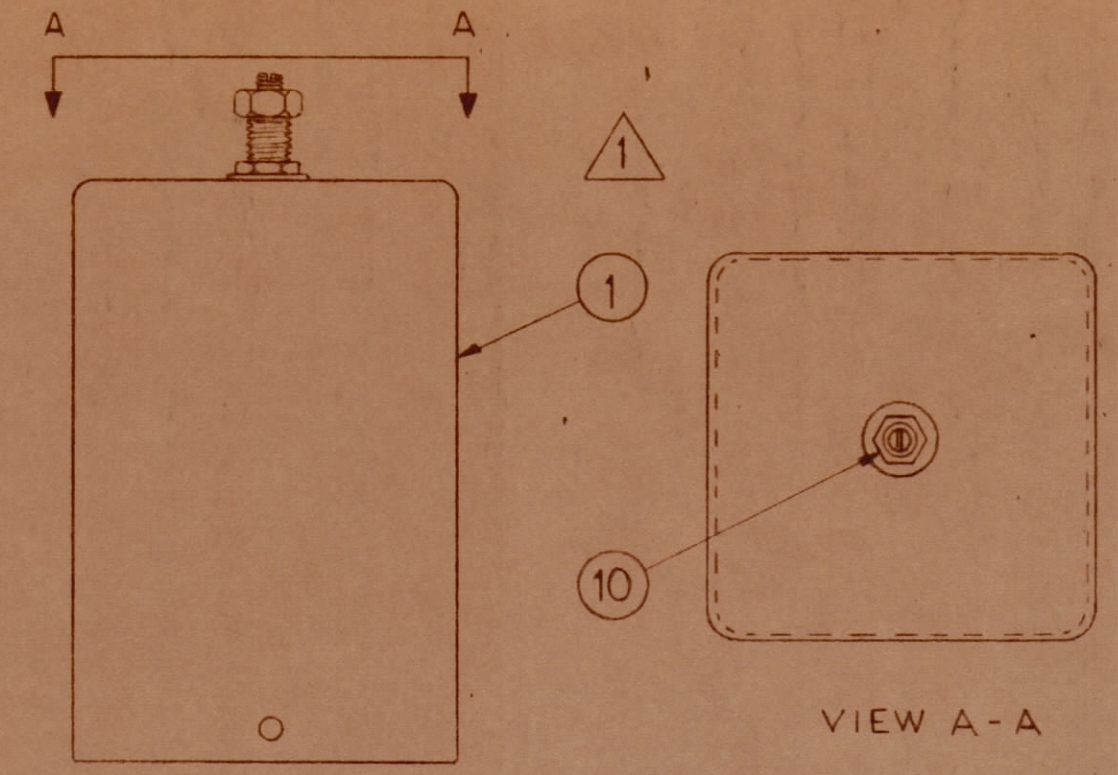
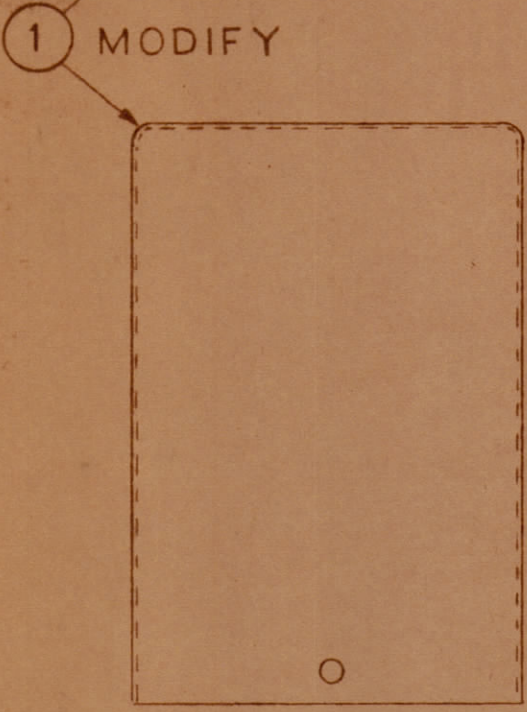
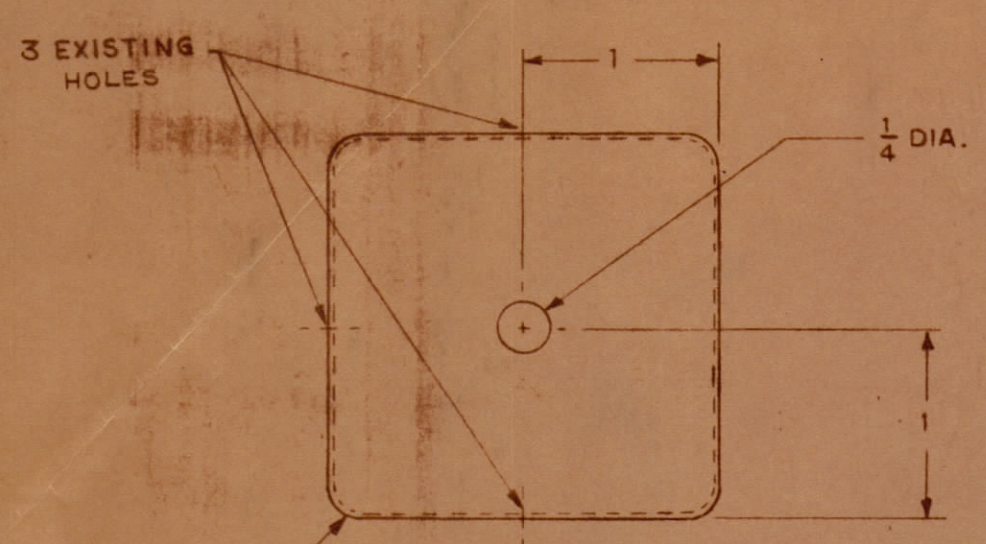


REVISIONS						
ZONE	LTR	DESCRIPTION	DATE	DRAFT	CHK'D	APP'D
A		REVISED & INCORP. ECG NO 57	2-24-71	L.S.	D.W.D.	L.W.D.



- NOTES:
- MARK AS SHOWN 1/8 HIGH CHARACTERS. PREFIX THE SER. NO. WITH THE JOB NO. BEGIN SER. NO. WITH .001 (i.e. xxx-001).
 - POSITION COMPONENTS AGAINST PRINTED CIRCUIT BOARD AND SOLDER LEADS.
 - APPLY FUNGUS PROOF VARNISH ON CIRCUIT SIDE OF BOARD ONLY.
 - USE ARTWORK PC555.

QTY REQ	QTY REQ	QTY REQ	ITEM	PART NO.	MANUFACTURER	DESCRIPTION	SYM
PARTS LIST							
				THE TMC SYSTEMS AND POWER CORPORATION SPRINGFIELD, VIRGINIA			
				BATTERY DISCHARGE SENSOR (ASSEMBLY)			
		DRAWN MITCH		DATE 9-16-70		SIZE CODE IDENT NO DWG. NO.	
		CHECKED		DATE 9/16/70		D 24146 AR183	
		D. ENG.		DATE		REV A	
		P. ENG.		DATE 9/16/70		SCALE	
		P. MGR.		DATE		SHEET 1 OF 1	
		CHIEF ENG. DEPT.		DATE 30 Dec 70			
		A265					

INTERPRET DRAWING PER LISTED DOCUMENTS

UNLESS OTHERWISE SPECIFIED DIMENSIONS ARE IN INCHES AND INCLUDE CHEMICALLY APPLIED OR PLATED FINISHES REMOVE ALL BURRS AND SHARP EDGES

TOLERANCES ON FRACTIONS ANGLES DECIMALS

MATERIAL

FINISH

NOTICE TO PERSONS RECEIVING THIS DRAWING THE TMC SYSTEMS AND POWER CORPORATION claims proprietary right in the material disclosed hereon. This drawing is issued in confidence for engineering information only and may not be reproduced or used to manufacture anything shown hereon without permission from THE TMC SYSTEMS AND POWER CORPORATION to the user. This drawing is loaned for mutual assistance and is subject to recall at any time.