

REQ. PER UNIT	MODEL	USED ON ASSY. NO.	DATE
	GPT-200K	AR-137	2-14-64
	GPT-200K	AR-138	2-14-64

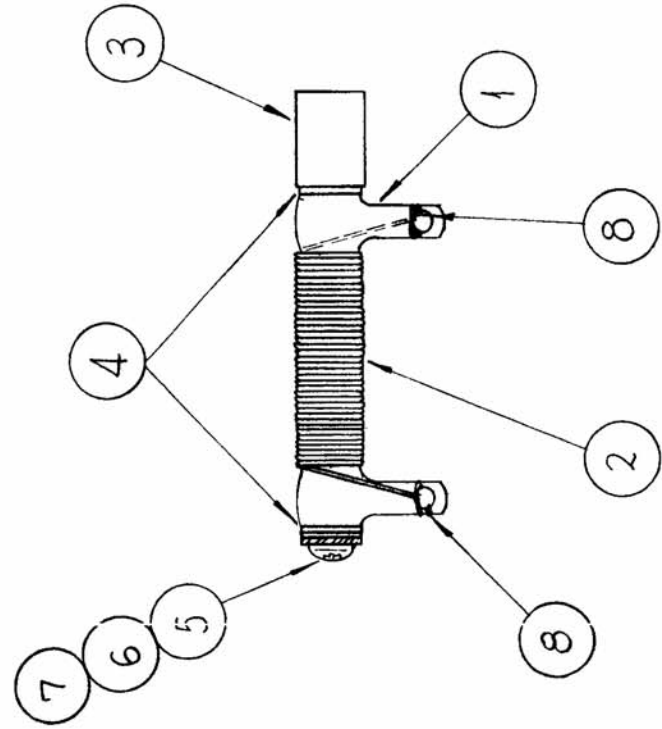
AR-157 0

PROCEDURE

- 1~CLOSE WIND 40 TURNS OF ITEM 2 AROUND ITEM 1 AND SECURE WITH ITEM 8 AS SHOWN.
- 2~COAT WINDING WITH ITEM 9 (INSULEX)
- 3~BAKE FOR 1/2 HOUR AT 250°F.

TEST:

R-(DC)-1.0 ± 5%  
I - MAX 10 AMPS



X	9	GL-104-2	INSULEX, U-85
X	8	BS-100	SOLDER, SOFT
1	7	SCBP06328N34	SCREW, MACHINE
1	6	LWE06MRN	LOCKWASHER, EXTERNAL TOOTH
1	5	FWO6LBN	WASHER, FLAT
2	4	WA-102-4	WASHER, FIBER, SHOULDER
1	3	NS 3W01-04	INSULATOR STANDOFF ROUND
X	2	WI-125-10	WIRE, CEROC "T"
1	1	RW-109-24	RESISTOR, FIXED, W.W. 10 WATTS

REQ. ITEM	PART NO.	DESCRIPTION	SYMBOL
		F. BUDETTI	
THE TECHNICAL MATERIEL CORP. MAMARONECK, NEW YORK			
RESISTOR, ASS'Y			
TYPE & TEMPER	HEAT TREAT. SPEC.	DRAWN	CHECKED
		SRG	SD RAC
FINISH & SPEC. NO.			
AR-157 0			

SYM	DESCRIPTION	DATE	CH. NO.	DRAFTS	CHECKER	ENG. APP.
0	ORIGINAL RELEASE FOR PROD.	4-24-64				
X	ITEM 2 WAS WI-125-5, 40 TURNS WAS 43, ITEM 9 ADDED	3-7-64				
A	REDRAWN & REVISED					
UNLESS OTHERWISE SPECIFIED DIMENSIONS ARE IN INCHES AND INCLUDE CHEMICALLY APPLIED OR PLATED FINISHES						
SCALE 1" = 1"						
TOLERANCES FRACTIONS						
X ± .05 ± 1/84						
XX ± .01 ANGLES						
XXX ± .005 ± 0° 30'						
CODE A						