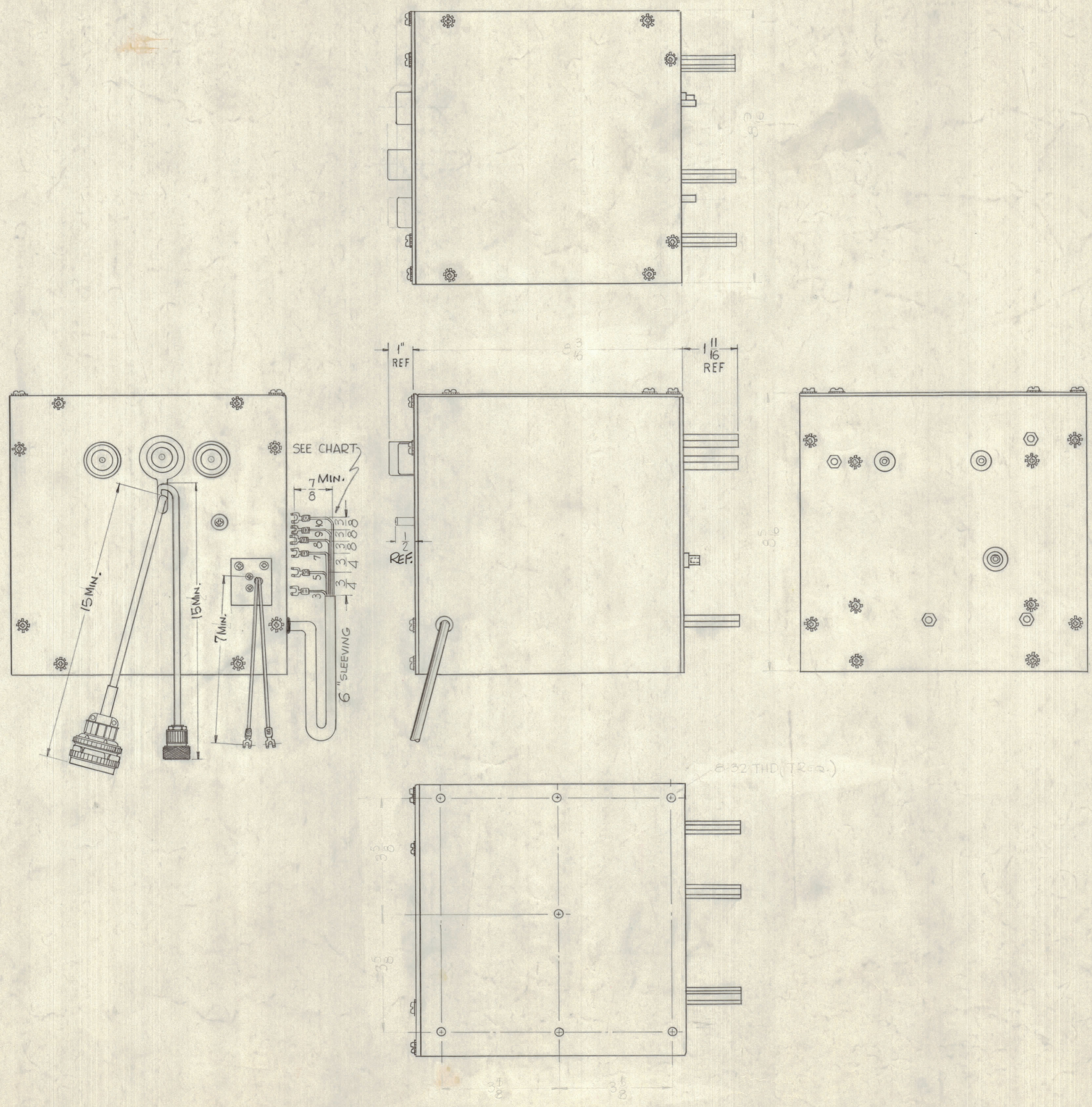


NOTICE TO PERSONS RECEIVING THIS DRAWING
 THE TECHNICAL MATERIEL CORPORATION claims proprietary right in the material disclosed herein. This drawing is issued in confidence for engineering information only and may not be reproduced or used to manufacture any thing without the written permission from THE TECHNICAL MATERIEL CORPORATION to the user. This drawing is loaned for individual assistance and is subject to recall at any time.

Property of:
 THE TECHNICAL MATERIEL CORPORATION
 MAMARONECK, NEW YORK

TERMINAL NUMBERS	WIRE COLORS
3	WHITE/BLK
5	WHITE/BLK
7	WH/VIOL
8	WH/BRN
9	WH/GRN/BLK
10	WH/RED/BLK



NOTE ~
 OVEN/OSC ASS'Y. AO-105
 CONSISTS OF:
 1 OVEN ASS'Y, AO-104
 1 OSC. ASS'Y, AO-103

AO 105 C

C	DIMENSIONS DELETED REF. ADDED ON DIMENSIONS	8-22-67	18461	H.G.	E.F.M.		
B	REV. & UPDATED COLORS + DIM	7-20-67	18386	HEA			
A	6" SLEEVING WAS 8 1/2"	3-23-64	11096	A.M.			
SYM	ZONE	DESCRIPTION	DATE	CH. NO.	DRAFTS	CHECKER	ENG. APP.
UNLESS OTHERWISE SPECIFIED:			SCALE				
DIMENSIONS ARE IN INCHES			MAXIMUM ALLOWABLE TOLERANCES HAVE BEEN DETERMINED AND ANY DEVIATIONS WILL BE CAUSE FOR REJECTION. REMOVE ALL BURRS & SHARP EDGES				
TOLERANCES ON							
FRACTIONS ± 1/64			DECIMALS ± .005		ANGLES ± 1/2°		

REQ. PER UNIT	MODEL	SECTION	ASS'Y. NO.	DATE	TYPE & TEMPER	HEAT TREAT. SPEC.	FINISH & SPEC. NO.	ELC. DES. APP.	MECH. DES. APP.	SHEET	OF
1	CMD-1			10-28-61						AO 105	C
USED ON											