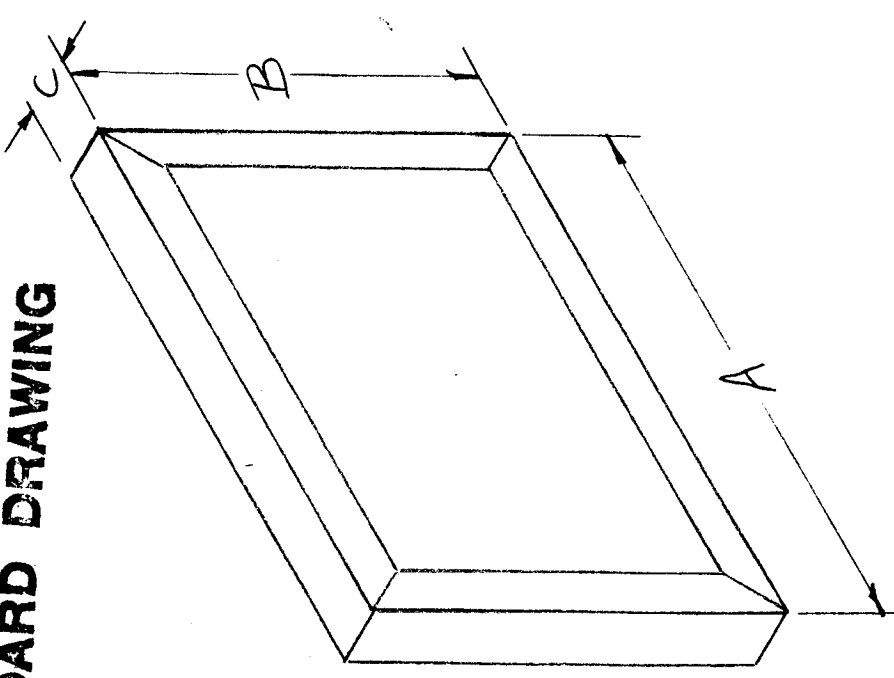


USED ON
 ASSY. NO. AD-102 E
 MODEL
 DATE

STANDARD DRAWING



T.M.C. PART NO	R.P. PART NO	A (INCHES)	B (INCHES)	C (INCHES)	TRIM TO SIZE PADS
AD-102-1		4	4	1/2	DOUBLE
AD-102-2		5 1/2	5 1/2	1	DOUBLE
AD-102-3		16	11 3/4	1	DOUBLE
AD-102-4		4	4	1/2	SINGLE
AD-102-5		3 5/8	6 5/8	1/2	SINGLE
AD-102-6		10 1/8	11 3/8	1/2	SINGLE
AD-102-7		7 5/8	16 7/8	1/2	SINGLE
AD-102-8		6 5/8	6 5/8	1/2	SINGLE
AD-102-9		16	16	1/2	SINGLE

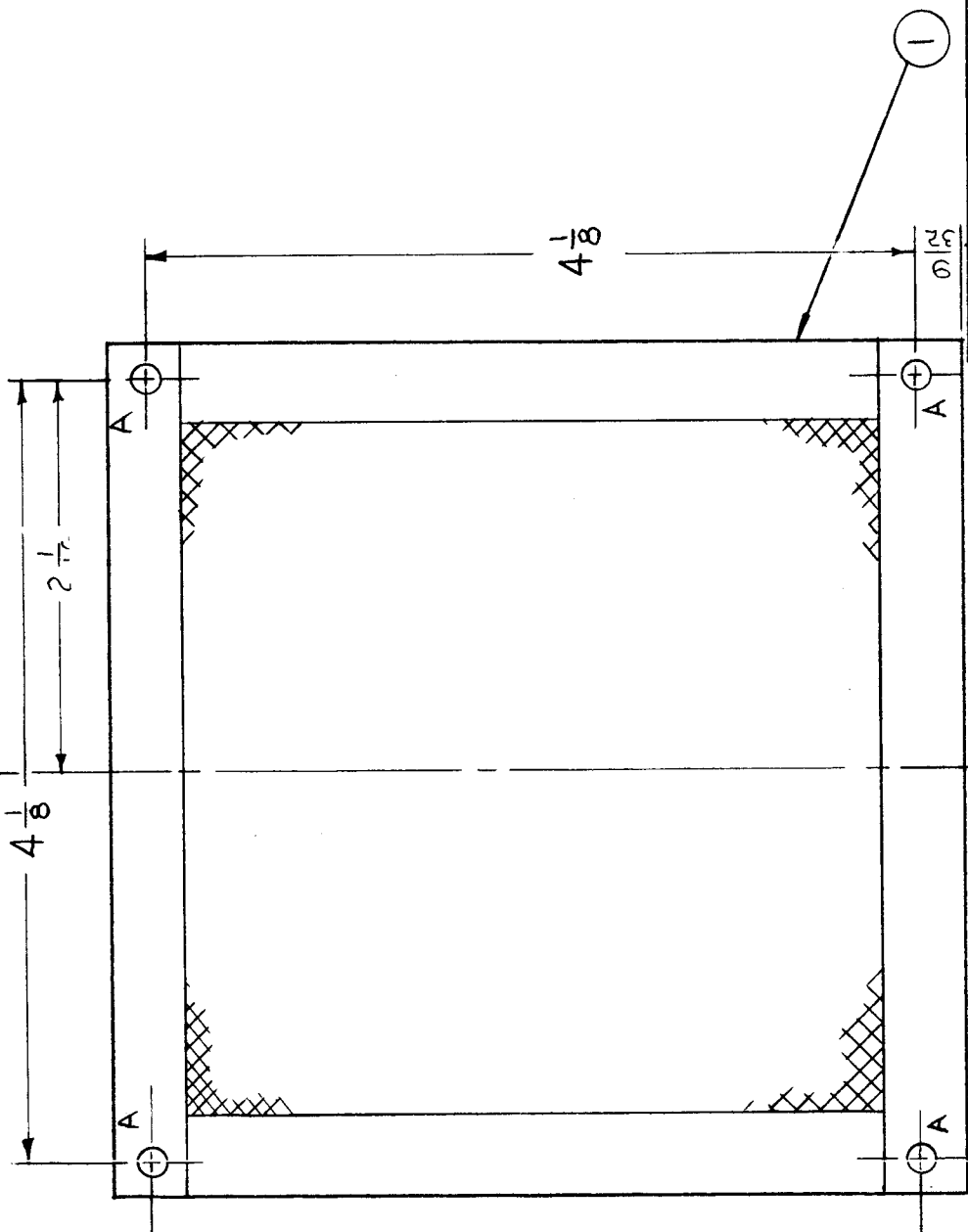
UNLESS OTHERWISE SPECIFIED ALL DIMENSIONS ARE FOR REF.

REF: RESEARCH PRODUCTS CORP.

REQ. ITEM	PART NO.	DESCRIPTION	SYMBOL
D 1	AD-102-9 Added for GPT-10000		
C 1	AD-102-5 THRU -8 Added for GPT-7501 -2		
B 1	AD-102-4 Added for PAL-350		
A 1	AD-102-2,3 Added		
REQ. ITEM	STOCK SIZE	THE TECHNICAL MATERIEL CORP. MAMARONECK, NEW YORK	
ISSUE ITEM	MATERIAL	ALUMALLOY	
CHANGED FROM	DATE	CH. NO.	DRAFTS
	7.11.66	16526	W40
	1/8/59	4	16
	10/9/58	3	W40
	4/18/58	2	16
	3/13/58	1	16
ISSUE ITEM	TYPE & TEMPER	HEAT TREAT. SPEC.	CHECKER
			ENG. APP.
DEC. DIM. ±	SCALE:		
FRAC. DIM. ±	MAXIMUM ALLOWABLE TOLERANCES HAVE BEEN DETERMINED AND ANY DEVIATIONS WILL BE CAUSE FOR REJECTION.		
ANGULAR DIM. ±	REMOVE ALL BURRS AND SHARP EDGES		
	FINISH & SPEC. NO.		
	DRAWN	CHECKED	FINAL APPROVAL
	3/8/58		A.J.J.
			AD-102 E

REQ. PER UNIT	1	MODEL	RTIH-1	USED ON	AD106 A
ASSY. NO.		DATE			

HOLES:
A - 1/64 DIA. (4 REQ'D)



REQ. ITEM	1	PART NO.	AD103-19	DESCRIPTION	FILTER	SYMBOL	
					EATON		
		STOCK SIZE			THE TECHNICAL MATERIEL CORP. MAMARONECK. NEW YORK		
		MATERIAL			FILTER, AIR DRY TYPE (MODIFICATION)		
		TYPE & TEMPER			RME 8/3/66		
		HEAT TREAT. SPEC.			8/11/66		
		FINISH & SPEC. NO.			AD106		
					FINAL APPROVAL		

SYM		DESCRIPTION	DATE	CH. NO.	DRAFTS	CHECKER	ENG. APP.
A	(2) 1/16 REF DIM O.D. (1 ADDED), TITLE CLAR		12.20.66	17540	WHD	J. H. PEE	
Ø	ORIGINAL RELEASE		8/16/66	Ø		J. H. PEE	

UNLESS OTHERWISE SPECIFIED DIMENSIONS ARE IN INCHES AND INCLUDE CHEMICALLY APPLIED OR PLATED FINISHES	SCALE
FRACTIONS ± 1/64	CODE
DECIMALS .X ± .05	
.XX ± .01	
.XXX ± .005	
TOLERANCES	
ANGLES ± 0° 30'	