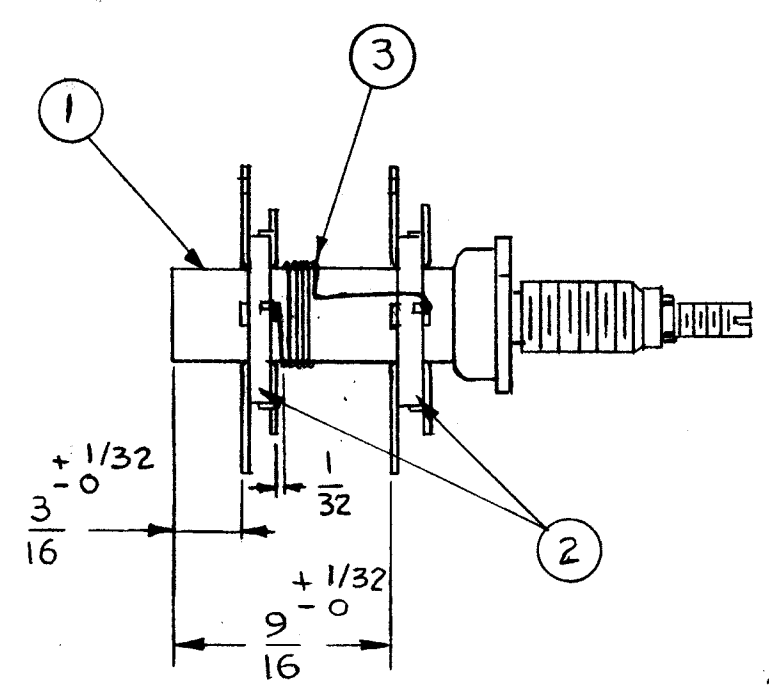


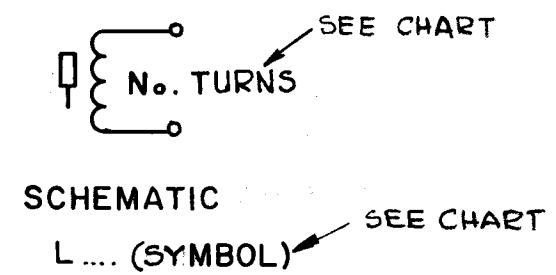
| TMC PART NO | ITEM 1 | ITEM 3 | No OF TURNS | MODEL CHG-3 | |
|-------------|-----------|------------|-------------|-------------|----------------|
| | | | | REQ'D/UNIT | CIRCUIT SYMBOL |
| AC210-1 | CF134-5-E | WI141-32-9 | 20 | 1 | L1005 |
| -2 | ↑ | WI141-30-9 | 12 | 1 | L1016 |
| -3 | ↑ | ↑ | 11 | 1 | L1023 |
| -4 | ↑ | ↑ | 8 | 1 | L1029 |
| -5 | ↓ | ↓ | 6 | 1 | L1035 |
| -6 | CF134-5-E | ↓ | 3 | 2 | L1041 L1046 |
| -7 | CF134-5-O | WI141-30-9 | 3 | 1 | L1056 |

AC210-1

| REVISIONS | | | | | |
|-----------|--|---------|------------|--------|--------------------|
| SYM | DESCRIPTION | DATE | E.M.N. NO. | DRAFT | CHKD APPD |
| X1 | CHART UPDATED. FABRICATION NOTES ADDED | 3-5-65 | | G.D.L. | <i>[Signature]</i> |
| Ø | ORIGINAL RELEASE FOR PRODUCTION | 3-19-67 | | G.D.L. | |



- FABRICATION NOTES -
- 1- ASSEMBLE ITEM 2 AS SHOWN
 - 2- TURNS TO BE SINGLE LAYER, CLOSE WOUND TURNS ON COIL FORM AND FINISHED AS SHOWN.
 - 3- STAKE WIRE ENDS TO COIL FORM WITH ITEM 5 (GLIOZ).
 - 4- STRIP ENDS & WRAP AROUND SHORT TERMINALS AS SHOWN & SOLDER.



NOTES

| | | |
|------------|---------------|------------|
| CHG-3 | | ASS'Y. NO. |
| Q'TY./UNIT | MODEL USED ON | |
| SCALE | CODE | |
| 2:1 | | |

THE CONTENTS OF THIS DRAWING ARE THE EXCLUSIVE PROPERTY OF THE TECHNICAL MATERIEL CORP. ITS UNAUTHORIZED USE OR REPRODUCTION IN WHOLE OR IN PART IS STRICTLY FORBIDDEN.

| REQ'D. | ITEM | PART NUMBER | DESCRIPTION | SYMBOL |
|--------|------|-------------|----------------------|--------|
| X | 5 | GLIOZ | ADHESIVE -Q-MAX | |
| X | 4 | BS100 | SOLDER, TIN ALLOY | |
| X | 3 | SEE CHART | WIRE, ELEC. MAGNET | |
| 2 | 2 | TE181-4 | TERMINAL, LUG-COLLAR | |
| 1 | 1 | SEE CHART | FORM, COIL, W/CORE | |

LIST OF MATERIAL

| | | | | | |
|---|--|--|----------------|--------------------------------------|--|
| MATERIAL | | THE TECHNICAL MATERIEL CORP. MAMARONECK, NEW YORK | | | |
| FINISH | | TITLE COIL, RF ADJUSTABLE | | | |
| UNLESS OTHERWISE SPECIFIED DIMENSIONS ARE IN INCHES AND INCLUDE CHEMICALLY APPLIED OR PLATED FINISHES | | DRAWN G.D.L. | DATE 1-8-64 | FINAL APPROVAL <i>[Signature]</i> | |
| | | CHECKED <i>[Signature]</i> | DATE | DATE 3/19/65 | |
| DECIMALS .X ± .05 .XX ± .01 .XXX ± .005 | | FRACTIONS ± 1/64 ANGLES ± 0° 30' | | ELECT. DES. <i>[Signature]</i> | |
| TOLERANCES | | MECH. DES. | | DATE | |
| | | | | SHEET | |
| | | | | REV. LTR. | |