

AC189 A

REQ. PER UNIT	MODEL	USED ON ASSY. NO.	DATE
1	VLRB-1	A3681	3-26-65

ELECTRICAL SPECS.
(WITH SLUG INSERTED)

OPERATING FREQUENCY:

INDUCTANCE @ 250 KCS

PRIMARY: 4.6mh ± .02 mh

SECONDARY: \approx

"Q" (PRIMARY) @ 250 KCS: > 250

MECHANICAL SPEC.

URNS

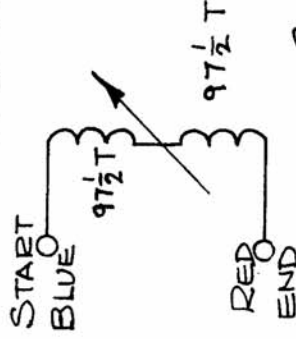
PRIMARY: 195

SECONDARY: \approx

RETAINER, BOTTOM: BRASS CAP PLATED

RETAINER, TOP: NICKEL SILVER H/H

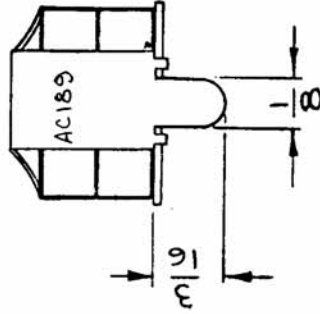
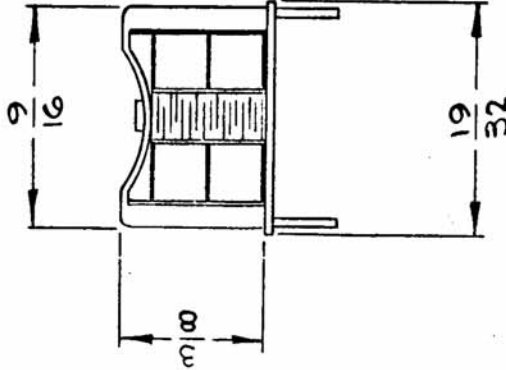
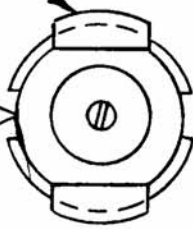
MATERIAL:
CORE & SLUG: POWDERED IRON



SCHEMATIC DIAGRAM

STAMP TMC PART NO.
3/32 HIGH GOTHIC
W/LATEST REV. LETTER

START BLUE
END RED



REQ. ITEM	PART NO.	DESCRIPTION	SYMBOL
		THE TECHNICAL MATERIEL CORP. MAMARONECK. NEW YORK	
		COIL, RF. ADJUSTABLE	
		MATERIAL	
		HEAT TREAT. SPEC.	
		DRAWN	
		CHECKED	
		FINISH & SPEC. NO.	
		ELEC. DES. APP.	
		DRAFTS	
		CHECKER	
		ENG. APP.	
		DATE	
		CH. NO.	
		SCALE	
		5-21-65	
		14120	
		4765	
		ORIGINAL RELEASE FOR PRODUCTION	
		DESCRIPTION	
		UNLESS OTHERWISE SPECIFIED	
		DIMENSIONS ARE IN INCHES AND INCLUDE	
		CHEMICALLY APPLIED OR PLATED FINISHES	
		FRACTIONS	
		± 1/64	
		ANGLES	
		± 0° 30'	
		TOLERANCES	
		± .05	
		± .01	
		± .005	
		CODE	
		A	
		2-A3917	
		AC189	
		MECH. DES. APP.	
		FINAL APPROVAL	