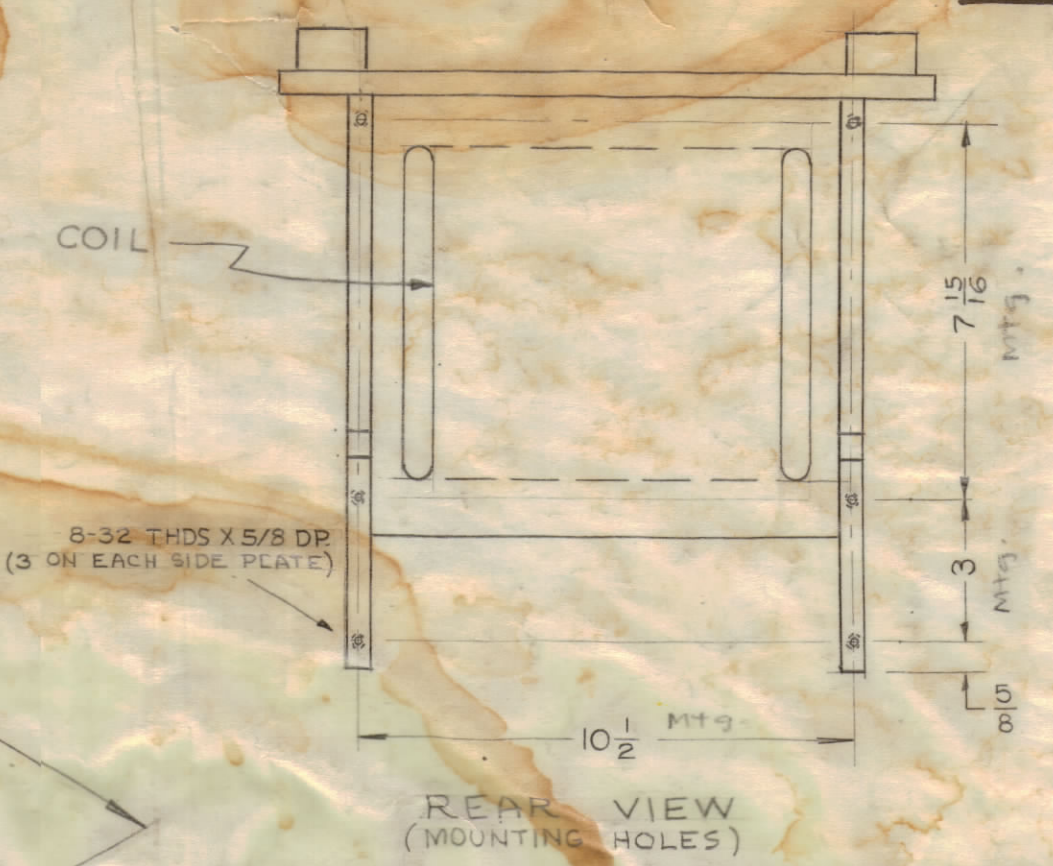
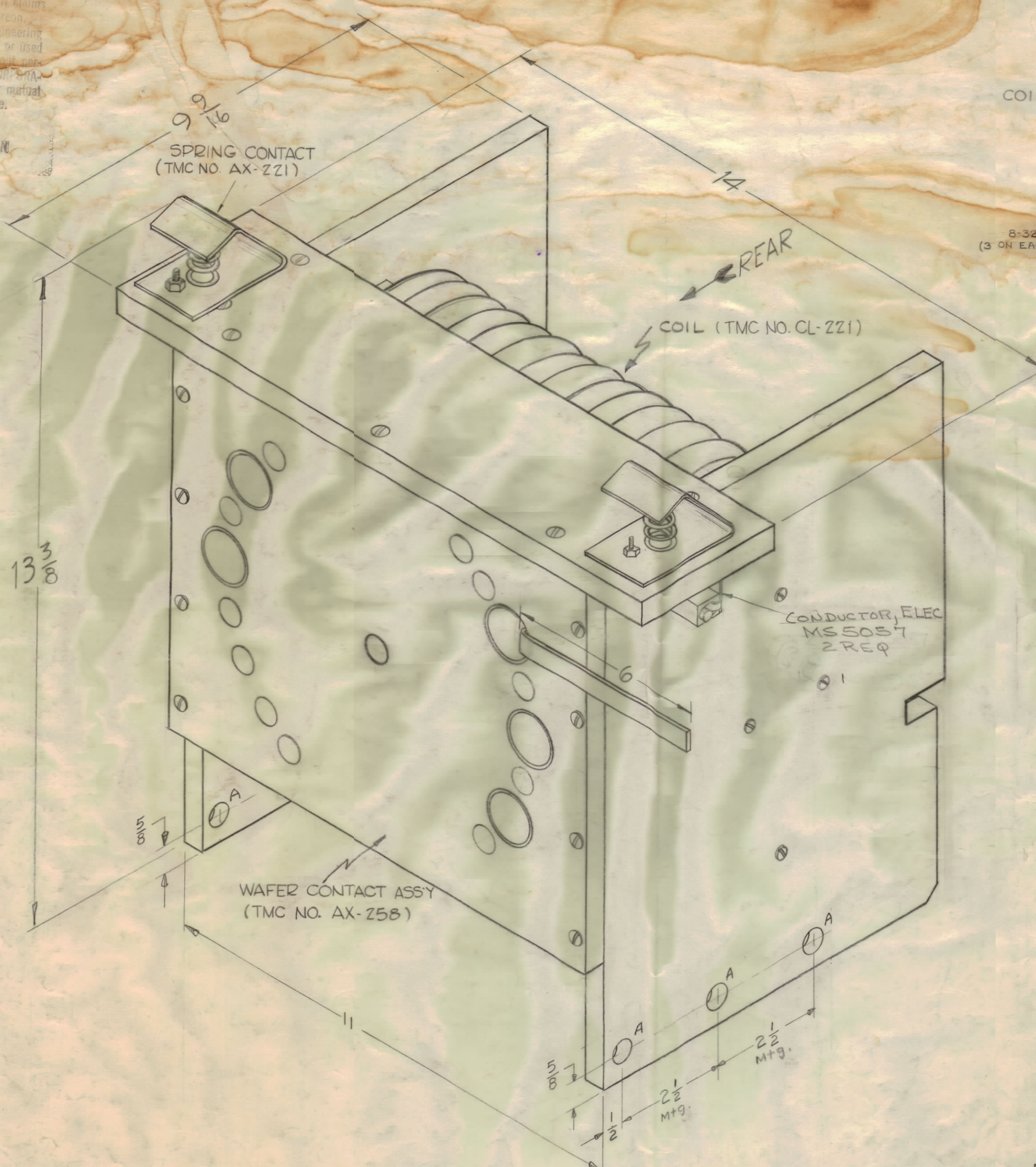


PROPERTY OF THE TECHNICAL MATERIEL CORPORATION
 MAMARONECK, NEW YORK



SPECIFICATIONS

COIL
 INDUCTANCE - 30 MICROHENRIES TOTAL.
 TAPPED AS FOLLOWS
 (FROM "0" REF.)

30 μ hy

CURRENT CAPACITY - 30 Amps
 COIL INSULATION - TEFLON
 COIL MATERIAL - COPPER, SILVER PLATED (S245)

WAFER
 MATERIAL - SUPRAMICA
 ALL OTHER INSULATION - SILICONE GLASS
 WAFER CONTACTS - BRASS, RHODIUM PLATE
 SPRING CONTACTS - BERYLLIUM COPPER, RHODIUM PLATE.

A ∇ 7/32 D. MTG. HOLES 6 REQ.
 (3 ON EACH SIDE PLATE)

E	13-3/8 WAS 13-1/2 & 9-9/16 WAS 9-3/4	6.19.60	18960	HG	FB		
D	COIL WAS GOLD PLATED	9-14-60	16830				
C	TERM #1 DEL FROM SCHEM MS 5057 ADDED 2 EA	9.9.60	16830	WFO	DB		
B	2 Elec. Spec. Clarified, 1 6" STRAP ADDED	12.22.60	3771	RU	DB		
A	H2 REAR VIEW DETAIL ADDED C+ (6) "A" MTG. HOLES	6.13.60	2357	W	DB		
ISSUE	ZONE	DESCRIPTION	DATE	CH. NO.	DRAFTS	CHECKER	ENG. APP.
TOLERANCES			SCALE: BA-1889				

DEC. DIM. \pm
 FRAC. DIM. \pm
 ANGULAR DIM. \pm

MAXIMUM ALLOWABLE TOLERANCES HAVE BEEN DETERMINED AND ANY DEVIATIONS WILL BE CAUSE FOR REJECTION.
 REMOVE ALL BURRS AND SHARP EDGES

1	40K	AT-102		5-1-61
1	40K	AT-101		4-13-60
REQ PER UNIT	MODEL	SECTION	ASSY. NO.	DATE

REQ. ITEM	PART NO.	DESCRIPTION	SYMBOL
		THE TECHNICAL MATERIEL CORP. MAMARONECK, NEW YORK	
		ASSEMBLY, COIL, CONTACT & INSULATOR	
		DRAWN: JWB	ELEC. DES. APP.:
		CHECKED: JWB	MECH. DES. APP.:
			FINAL APPROVAL:
			AC-112
			E