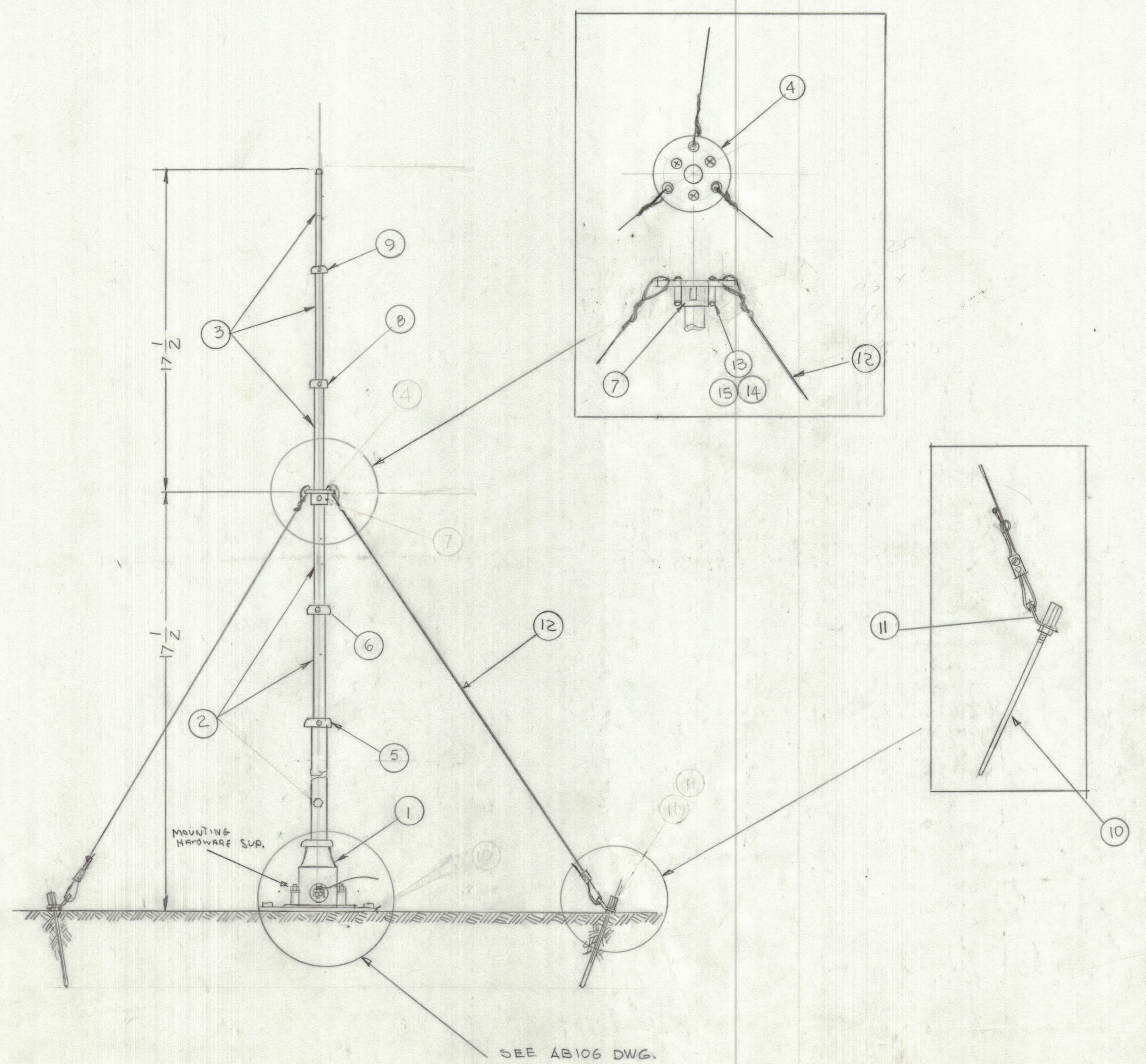


REVISIONS							
E.M.N.O	DRAFT	CHKD	ZONE	LTR	DESCRIPTION	DATE	APPROVED
					ORIGINAL RELEASE FOR PROD.	9-25-91	



QTY. REQ.	ITEM	PART NO.	DESCRIPTION	SYMBOL
3	15	NTC1032 P	NUT, CAP	
3	14	SCRPI032 BN Z2	SCREW MACHINE	
3	13	TE 10 32 BN 0.012 R	SPACER THD	
4	12	3PC 30FT LON6	NYLON ROPE	
1	11	MS6643	BRACKET, GUY	
1	10	PM1526	ROD SUPPORT ANT.	
1	9	PM1618-5	CAP, RETAINER	
1	8	PM1618-4		
1	7	PM1618-3		
1	6	PM1618-2		
1	5	PM1618-1	CAP, RETAIR	
1	4	MS 7255	GUYING, ANTENNA	
1	3	AW101-1	TELESCOPIC ANTENNA	
1	2	AW101-4	TELESCOPIC ANTENNA	
1	1	AB106	BASE ANT. ASSY	

LIST OF MATERIAL						
FINAL APPROVAL	DATE	THE TECHNICAL MATERIEL CORP. MAMARONECK, NEW YORK AW-104-4 ASSY				
MECH. DES.	DATE					
ELECT. DES.	DATE					
CHECKED	DATE					
DRAWN	DATE	SIZE	CODE	IDENT NO.	DWG NO.	ISSUE
G.D.L.	1-4/91	D	82679		AA104	
SCALE				SHEET OF		

UNLESS OTHERWISE SPECIFIED DIMENSIONS ARE IN INCHES AND INCLUDE CHEMICALLY APPLIED OR PLATED FINISHES

TOLERANCES ON
DECIMALS X = .05
XX = .01
XXX = .005
FRACTIONS ± 1/64
ANGLES = 0° - 30'

QTY / UNIT	MODEL USED ON	ASS'Y NO.
APPLICATION		
CODE		
<small>NOTICE TO PERSONS RECEIVING THIS DRAWING</small> <small>THE TECHNICAL MATERIEL CORPORATION claims proprietary right in the material disclosed hereon. This drawing is issued in confidence for engineering information only and may not be reproduced or used to manufacture anything shown hereon without permission from THE TECHNICAL MATERIEL CORPORATION to the user. This drawing is loaned for mutual assistance and is subject to recall at any time.</small>		
MATERIAL		
FINISH		

MS 7255