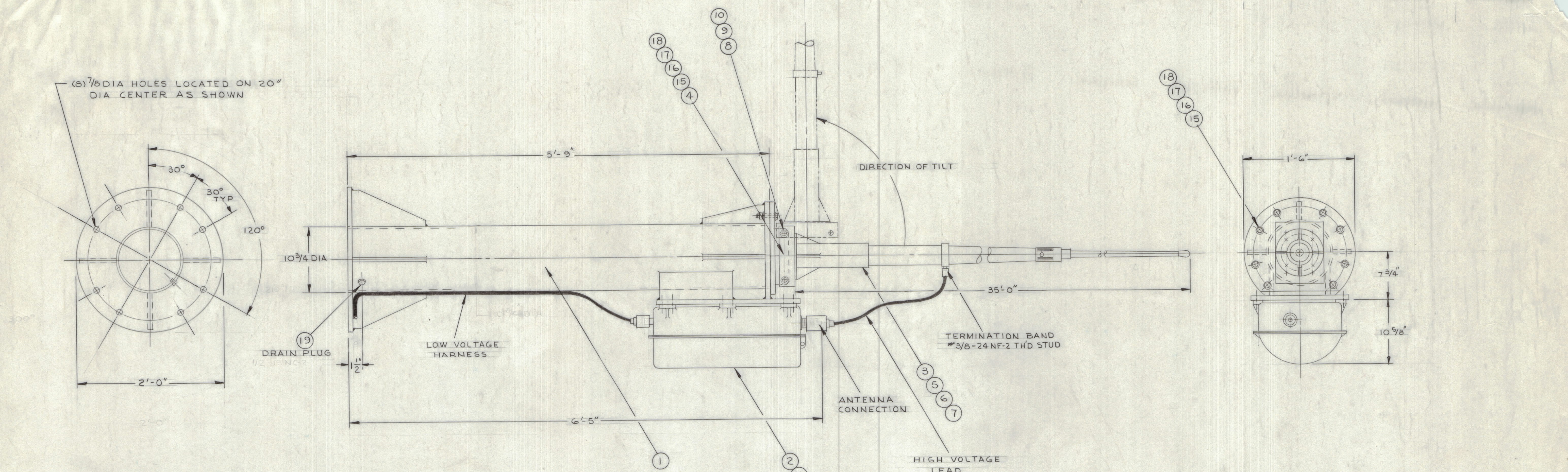


REVISIONS				
ZONE	LTR	DESCRIPTION	DATE	E.M.N. NO.
		ORIGINAL RELEASE FOR PRODUCTION	12-9-68	26



- NOTES:**
- 1-MATERIAL: ITEM-1
    - (A) ALUMINUM PLATE 2024-T4 .750 THK, USED FOR ALL SUPPORT GUSSETS, TOP & BOTTOM & COUPLER MTG PLATES.
    - (B) EXTRUDED ALUMINUM TUBE 6063-T6 10.750 O.D. X 10.020 I.D. USED FOR TRUNK.
  - 2-TRUNK, GUSSETS & MTG PLATES TO BE ARC-WELDED TOGETHER TO MAKE UP ITEM-1.
  - 3-MATERIAL: ITEM-4
    - (A) BOTTOM PLATE - STRUCTURAL STEEL CHANNEL 7 X 2 1/8 X 9 3/8 LG.
    - (B) TOP PLATE - STRUCTURAL STEEL CHANNEL 8 X 2 1/4 X 10 LG.
  - 4-FINISH: ITEM-1
    - (A) S404 - IRIDITE 14-2
    - (B) S114 - ZINC CHROMATE PRIMER
    - (C) LIGHT GRAY ENAMEL PER FORMULA #III, CLASS II SEMI-GLOSS PER MIL-E-15090 B
  - 5-FINISH: ITEM-4
    - (A) CADMIUM PLATE
    - (B) PAINT PER (B & C) ONLY, NOTE-4
  - 6-ALL FASTENERS TO BE STEEL CADMIUM PLATE PER QQ-P-416, .005 THK FOLLOWED BY YELLOW CHROMATE DIP.
  - 7-APPROX. TOTAL WEIGHT & WEIGHT PER SECTION
 

ANTENNA TRUNK ASSEMBLY	166 LBS
FOLD DOWN BASE	36
ANTENNA COUPLER	75
WHIP ANTENNA	67
	344 LBS TOTAL

QTY. REQ.	ITEM	PART NO.	DESCRIPTION	SYMBOL
1	19		BOLT, HEX HD # 1/2-13 NC-2	
12	18		HEXNUT # 5/8-11 NC-2	
12	17		LOCKWASHER # 5/8 SPLIT	
20	16		FLATWASHER # 5/8	
12	15		BOLT, HEX HD # 5/8-11 NC-2 X 2 1/2 LG	
11	14		HEXNUT # 3/8-16 NC-2	
11	13		LOCKWASHER # 3/8 SPLIT	
11	12		FLATWASHER # 3/8	
11	11		BOLT, HEX HD # 3/8-16 NC-2 X 2" LG	
2	10		HEXNUT # 3/4-10 NC-2	
2	9		LOCKWASHER # 3/4 SPLIT	
2	8		BOLT, HEX HD # 3/4-10 NC-2 X 9" LG	
8	7		LOCKWASHER # 5/8 SPLIT	
2	6		BOLT, HEX HD # 5/8-11 NC-2 X 1 7/8 LG	
2	5		BOLT, HEX HD # 5/8-11 NC-2 X 1 1/2 LG	
1	4	Q-482-6	FOLD DOWN BASE	
1	3	AW108	WHIP ANTENNA	
1	2	CU-938/URA-38	ANTENNA COUPLER	
1	1		ANTENNA TRUNK ASSY	

UNLESS OTHERWISE SPECIFIED DIMENSIONS ARE IN INCHES AND INCLUDE CHEMICALLY APPLIED OR PLATED FINISHES		FINAL APPROVAL <i>MM</i>	DATE 12/9/68	<b>THE TECHNICAL MATERIEL CORP.</b> MAMARONECK, NEW YORK  <b>ANTENNA TRUNK ASSEMBLY</b>
TOLERANCES ON		MECH. DES. M. ZETENA	DATE 2-27-68	
DECIMALS .X ± .05 .XX ± .01 .XXX ± .005 FRACTIONS ± 1/64 ANGLES ± 0°-30'		ELECT. DES. <i>JL</i>	DATE 12/6/68	
MATERIAL		DRAWN J. LESHINSKI	DATE 2-27-68	SIZE D 82679
FINISH		SCALE 1/2" = 1'		ISSUE AA103

QTY / UNIT	MODEL USED ON	ASS'Y NO.
APPLICATION		
CODE		
MATERIAL		
FINISH		

NOTICE TO PERSONS RECEIVING THIS DRAWING  
 THE TECHNICAL MATERIEL CORPORATION claims proprietary right in the material disclosed herein. This drawing is issued in confidence for engineering information only and may not be reproduced or used to manufacture anything shown hereon without permission from THE TECHNICAL MATERIEL CORPORATION to the user. This drawing is loaned for mutual assistance and is subject to recall at any time.