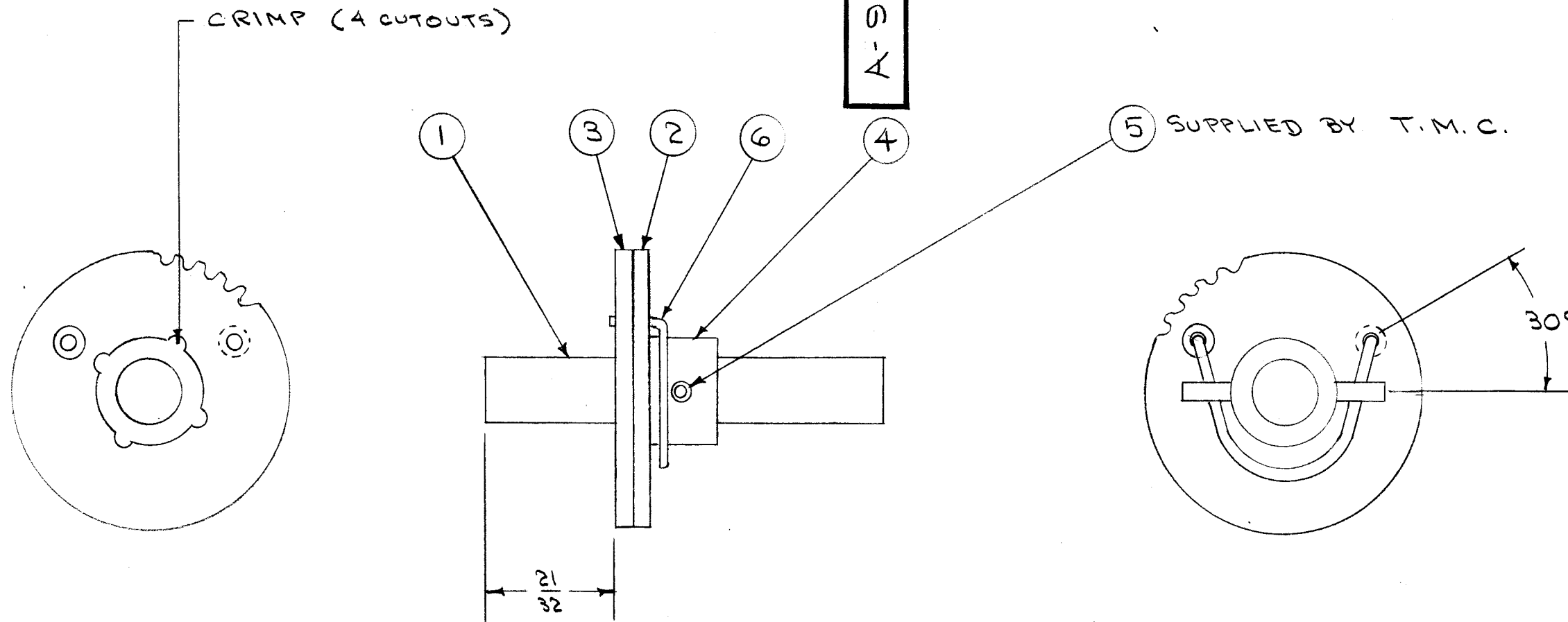


IF IT IS FOUND DESIRABLE TO CHANGE ANY TOLERANCE OR OTHER DETAIL SPECIFIED ON THIS DRAWING NOTIFY THE PURCHASER PROMPTLY.

MAXIMUM ALLOWABLE TOLERANCES HAVE BEEN DETERMINED AND DEVIATIONS WILL BE CAUSE FOR REJECTION. REMOVE ALL BURRS AND SHARP EDGES

A-998



1	6	SP-121	SPRING	
1	5	PN-109-6	PIN, ROLL	
1	4	PM-3A3	HUB	
1	3	GR-119-2	GEAR, FIXED	
1	2	GR-119-1	" , FREE	
1	1	PM-3A4	SHAFT	
REQ.	ITEM	PART NO.	DESCRIPTION	SYMBOL
#			THE TECHNICAL MATERIEL CORP. MAMARONECK, NEW YORK	
STOCK SIZE				
#		#	SPLIT GEAR ASSEMBLY	
MATERIAL		WEIGHT PER PC.		
#		#		
TYPE & TEMPER			CDD A-14-55	
#			DRAWN	MECH. DES. APP.
HEAT TREAT. SPEC.			FINAL APPROVAL	
#			CHECKED	
FINISH & SPEC. NO.			A-998	

ISSUE	ITEM	CHANGED FROM	DATE	CN. NO.	DRAFTS	CHECKER	ENG. APP.
TOLERANCES		SCALE:					
ALL OTHERS	DEC. DIM. \pm FRAC. DIM. \pm $\frac{1}{64}$ ANGULAR DIM. \pm	DRILL, PUNCH, COMMERCIAL STOCK SIZES AND MANUFACTURERS TOLERANCES ARE NOT INCLUDED.					

1	PMO- $\frac{1}{2}$			4-14-55
1	VOX- $\frac{1}{2}$			A-14-55
REQ. PER UNIT	MODEL	PROJECT NO.	ASS'Y. NO.	DATE
USED ON				