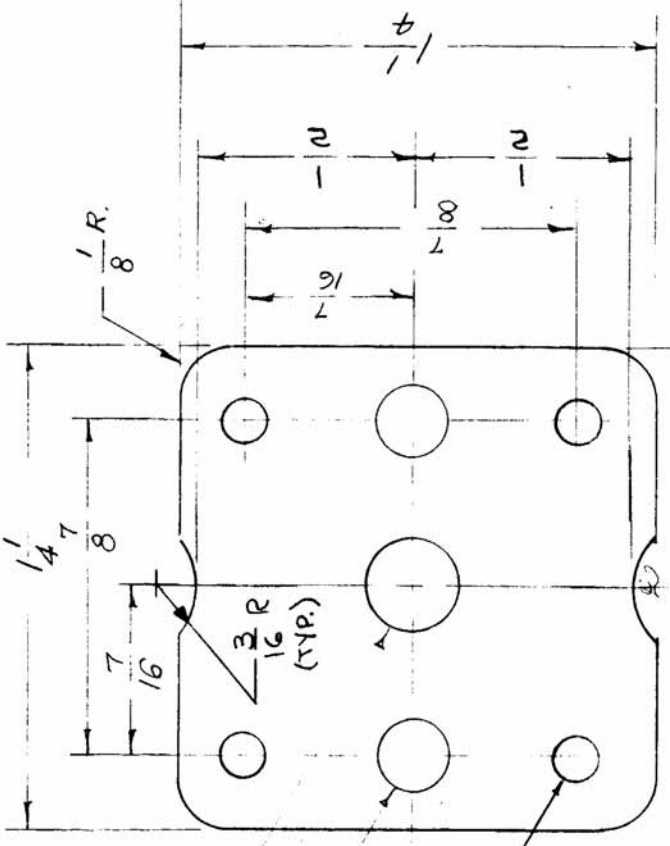
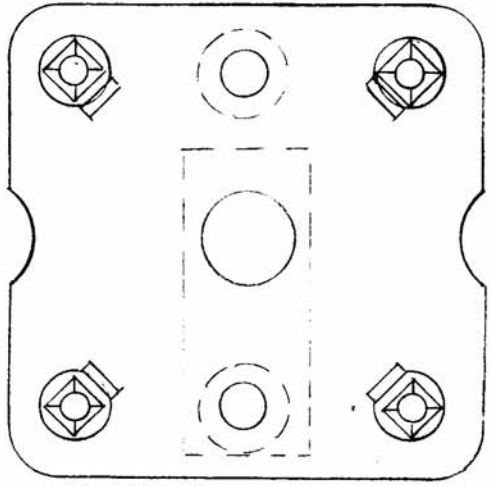
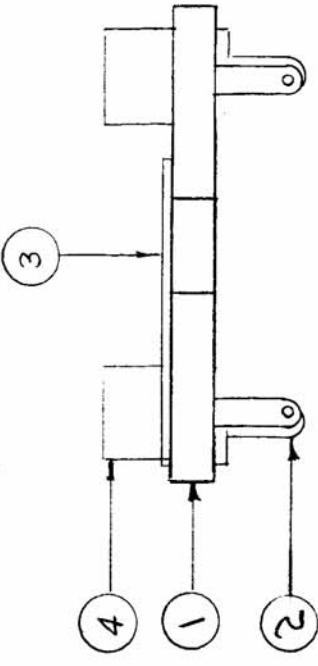


IF IT IS FOUND DESIRABLE TO CHANGE ANY TOLERANCE OR OTHER DETAIL SPECIFIED ON THIS DRAWING NOTIFY THE PURCHASER PROMPTLY.

MAXIMUM ALL WABLE TOLERANCES HAVE BEEN DETERMINED AND DEVIATIONS WILL BE CAUSE FOR REJECTION. REMOVE ALL BURRS AND SHARP EDGES



$\frac{1}{64} (.265) D$

#12(.189)D
2 HOLES

DRILL#29(.136)
4 HOLES

REQ. PER UNIT	MODEL	PROJECT NO.	USED ON
1	GPR	297	

ASS'Y. NO.	DATE
A-1037	3-25-55

A-976 G

2	4	TE-108-6	STANDOFF	SYMBOL
1	3	MS-132	GROUNDING STRAP	
4	2	TE-151	LUG	
1	1	PX-267	TERM. BD. (NO DWG)	
REQ. ITEM		PART NO.	DESCRIPTION	
		$\frac{1}{16}$		
		STOCK SIZE	THE TECHNICAL MATERIEL CORP.	
			MAMARONECK. NEW YORK	
			TERM. BD. ASSY.	
			LOAD COIL, XTAL FILTER	
			COD. 3-X-55	
			+++	
			DRAWN	
			ELEC. DES. APP.	
			MECH. DES. APP.	
			G.T.O	
			CHECKED	
			FINAL APPROVAL	
			A-976	
			G	

ISSUE ITEM	CHANGED FROM	DATE	CN. NO.	DRAFTS	CHECKER	ENG. APP.
G	#29(.136) WAS #29(.140)	3-6-67	17920	L.P.K.	J.P.M.B.	
F	3/16 R. WAS 5/16 NOTCH DIMS 1/2" WERE 9/16"	4-30-65	13948		J.P.M.B.	
TOLERANCES						
SCALE						
DEC. DIM. \pm						
FRAC. DIM. \pm 1/64						
AN ULAR DIM. \pm						
DRILL, PUNCH, COMMERCIAL STOCK SIZES AND MANUFACTURERS TOLERANCES ARE NOT INCLUDED.						