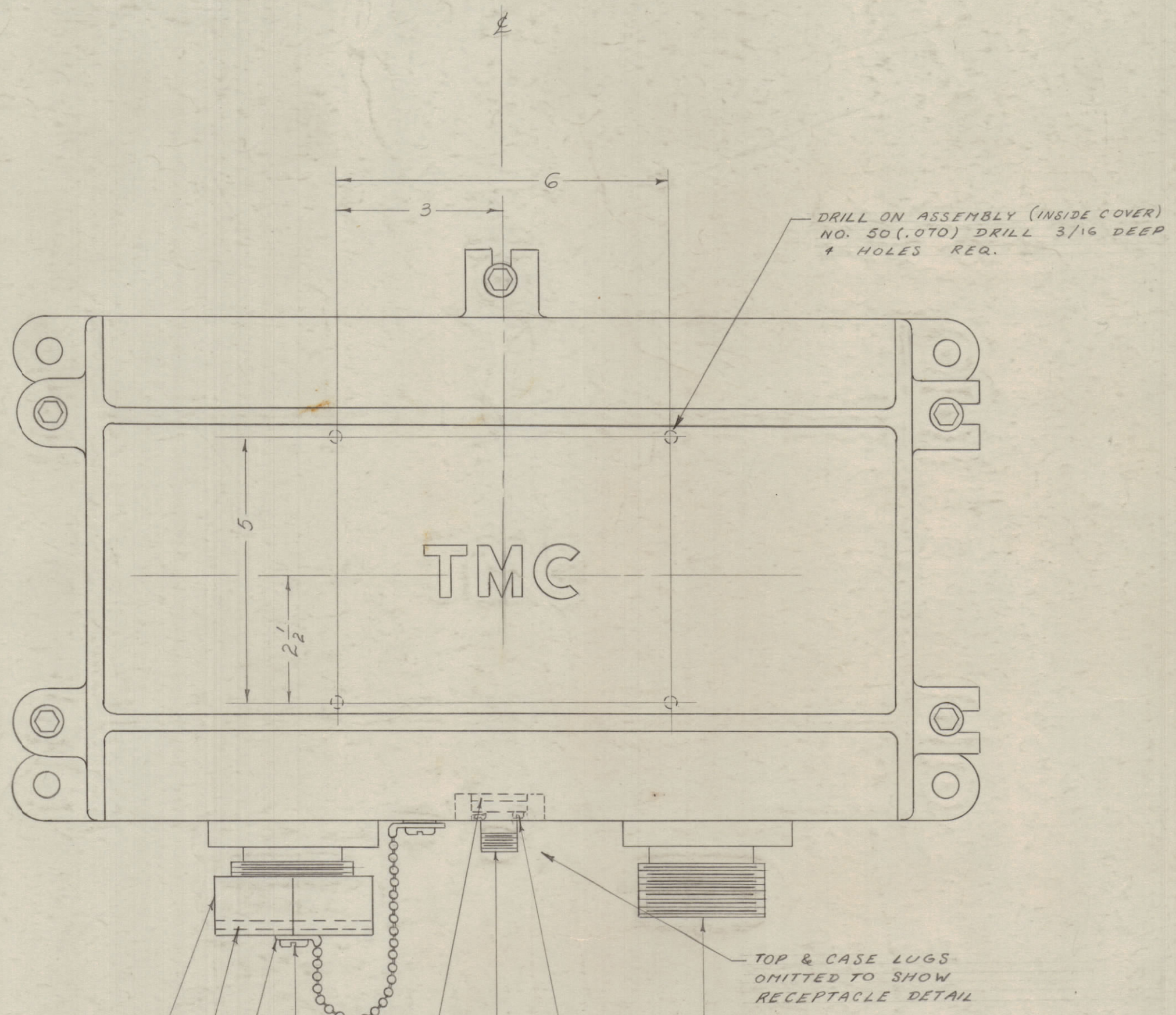
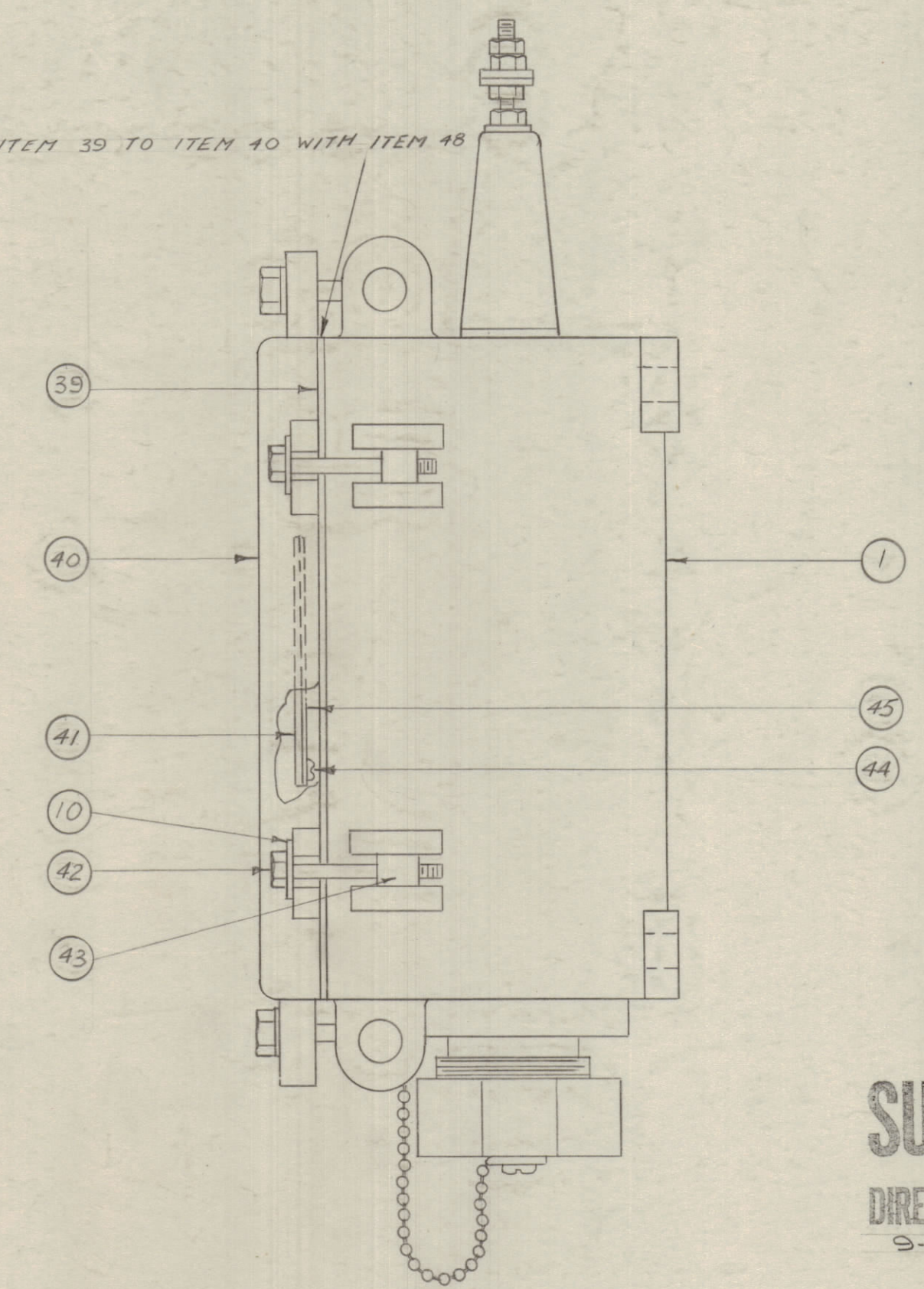


IF IT IS FOUND DESIRABLE TO CHANGE ANY TOLERANCE OR OTHER DETAIL SPECIFIED ON THIS DRAWING NOTIFY THE PURCHASER PROMPTLY.
 MAXIMUM ALLOWABLE TOLERANCES HAVE BEEN DETERMINED AND DEVIATIONS WILL BE CAUSE FOR REJECTION. REMOVE ALL BURRS AND SHARP EDGES



CEMENT ITEM 39 TO ITEM 40 WITH ITEM 48

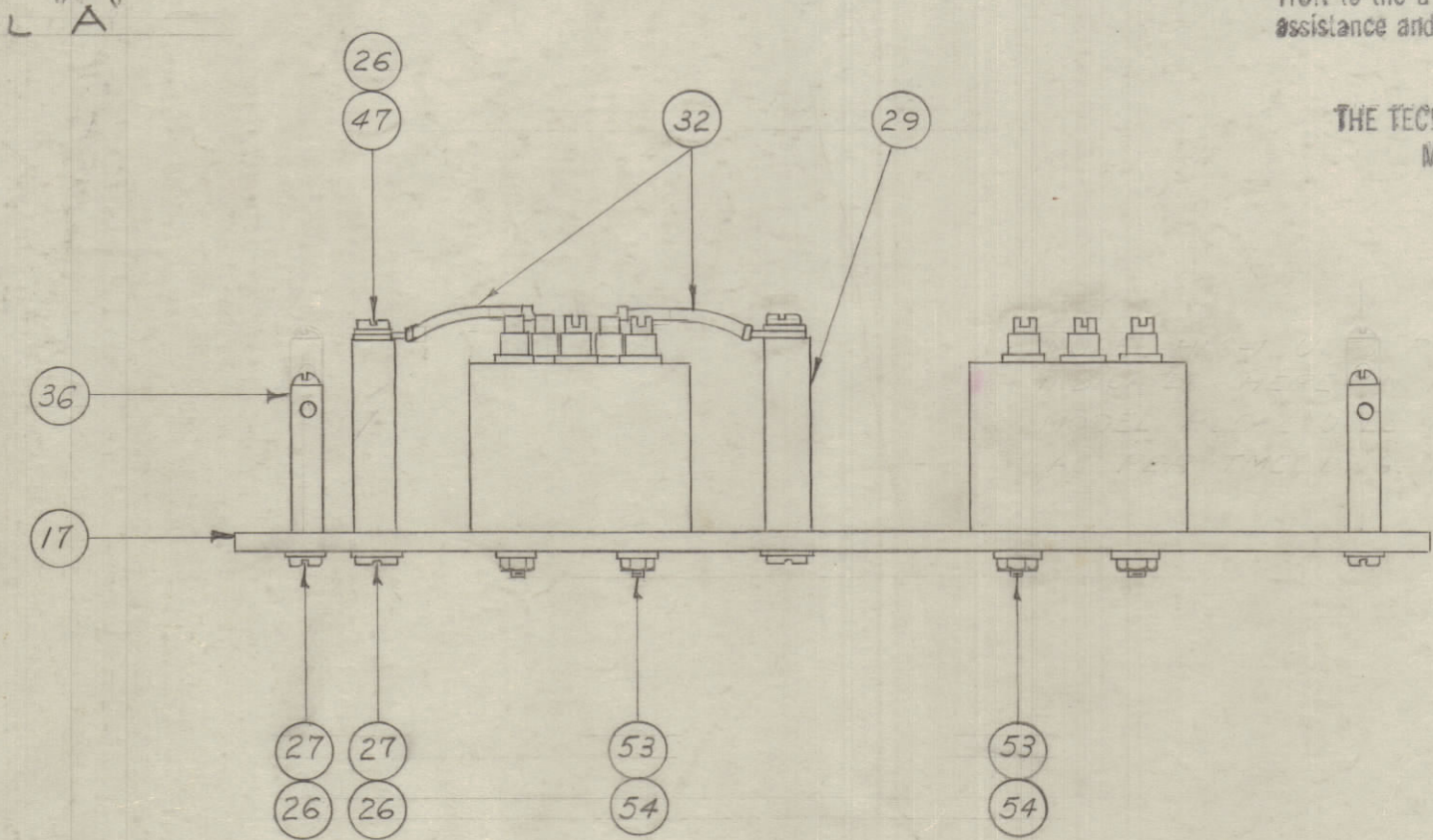
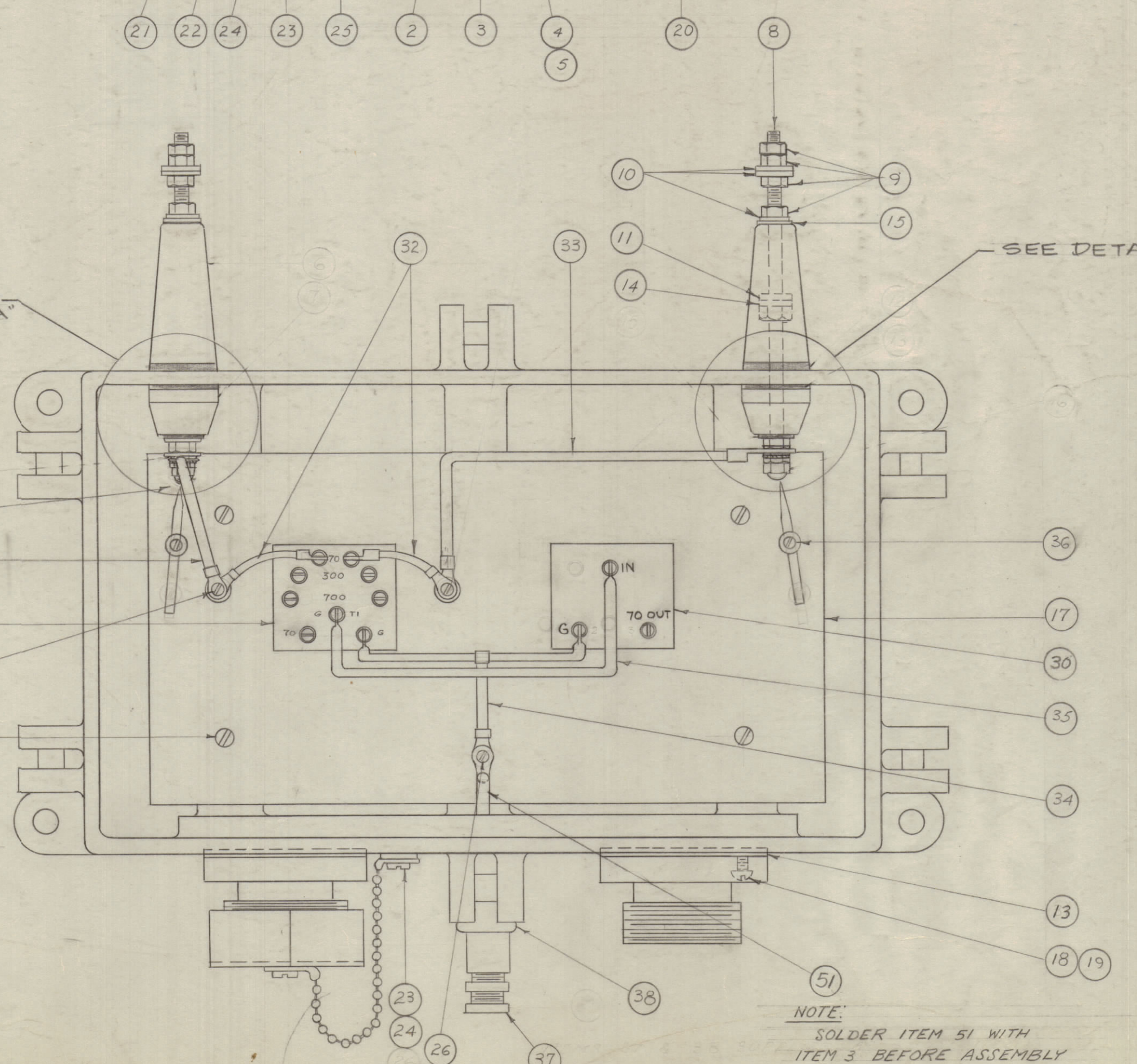
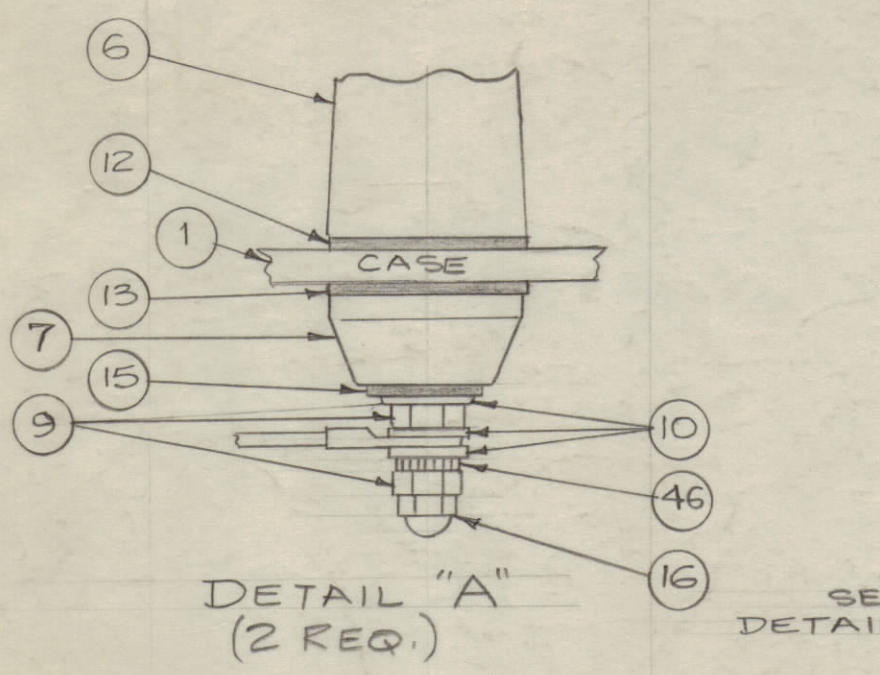


8	54	SCBS0632BCC	SCREW, MACHINE
8	53	LWE06MRC	WASHER, LOCK
	52		DELETED
1	51	A-956	GROUND CONNECTOR
X	50	BS-100	SOLDER SOFT
X	49	LU-102	COMPOUND, ANTI-SIEZE
X	48	GL-101-2	CEMENT, PLIDBOND
4	47	WA-109-46	WASHER, FIBRE
2	46	LWE25MRC	WASHER, LOCK
1	45	PX-117	GUARD
4	44	SC-102-1	SCREW, THD. CUTTING
6	43	PM-100	PIN COVER BOLT
6	42	SC-108-9	BOLT, HEX HEAD
1	41	SEE CHART	SCHEMATIC DIAGRAM
1	40	PM-114	COVER
1	39	GA-107	GASKET, COVER
1	38	UG-21B/U	PLUG
1	37	MX-564/U	CLAMP ARMOR
2	36	A-170	LIGHTNING ARRESTOR ASSY.
1	35	EP-150	HORIZONTAL GROUND CONN.
1	34	A-957	VERTICAL GROUND CONN.
1	33	A-954	CONNECTOR OUTPUT, RIGHT

SUPERSEDED

DIRECTLY REPLACED BY A-10240
 9-17-63 EMJ 9370

A-960
 D



NOTICE TO PERSONS RECEIVING THIS DRAWING

THE TECHNICAL MATERIEL CORPORATION claims proprietary right in the material disclosed herein. This drawing is issued in confidence for engineering information only and may not be reproduced or used to manufacture anything shown hereon without permission from THE TECHNICAL MATERIEL CORPORATION to the user. This drawing is loaned for mutual assistance and is subject to recall at any time.

Property of:
 THE TECHNICAL MATERIEL CORPORATION
 MAMARONECK, NEW YORK

NOTE:
 MODEL HLC-1 USES RG-85/U FITTINGS AS INDICATED HERE ON A-960
 MODEL HLC-2 USES FITTINGS FOR RG-12/U. REMOVE FLANGE COUPLING AND ACCESSORIES & REPLACE WITH RG-12/U MOUNTING PLATE ASSEMBLY AS PER TMC DRAWING A-777

ITEM 41 MODEL HLC-1 USES LD-197
 MODEL HLC-2 USES LD-374

NOTE:
 SOLDER ITEM 51 WITH ITEM 3 BEFORE ASSEMBLY

ITEM 37 & 38 SUPPLIED AS LOOSE ITEMS

D	1	REPLACED BY A-10240	9/17/63	9370	EMJ	9370	EMJ	9370
C	3	ON ITEM 30 TERM TO OUT WAS 2						
	2	ON ITEM 30 TERM G WAS 2	5/11/63	9365	MPH	9365	MPH	9365
	1	ON ITEM 30 TERM IN WAS 1						
B	1	"DETAIL A" Added	4/14/63	2	LS			
	5	ITEM 53 & 54 ADDED						
	4	ITEM 26 & 27 WAS 6 REQ						
A	3	ITEM 34 WAS A-955	4/14/63	1	PH	9365	MPH	9365
	2	ITEM 52 DELETED						
	1	NOTE ADDED (HLC-2)						

ISSUE	ITEM	CHANGED FROM	DATE	CN. NO.	DRAFTS	CHECKER	ENG. APP.	
TOLERANCES								
SCALE:								
DRILL, PUNCH, COMMERCIAL STOCK SIZES AND MANUFACTURERS TOLERANCES ARE NOT INCLUDED.								
ALL OTHERS	DEC. DIM. ±	FRAC. DIM. ±	ANGULAR DIM. ±					

2	32	A-952	CONNECTOR FLEXIBLE
1	31	A-953	CONNECTOR OUTPUT LEFT
1	30	TR-111	TRANSFORMER
2	29	NSSW0216	INSULATOR
1	28	TR-101	TRANSFORMER
9	27	LWE06MRC	WASHER, LOCK
9	26	SCBS0832BCC	SCREW, MACHINE
8	25	CT-100-3	BEAD CHAIN
2	24	MS-105-40	COUPLING CHAIN
2	23	SB50832SS4	SCREW MACHINE
1	22	GA-105	GASKET
1	21	PM-108	CAP COUPLING
2	20	PM-107	COUPLING, FLANGE
8	19	SCR32520SS2	SCREW MACHINE
8	18	LWS25MSS	WASHER, LOCK SPLIT
1	17	MS-627	MOUNTING PLATE
2	16	NTC2520BCL	NUT, CAP
4	15	WA-106	WASHER ASBESTOS
2	14	FW25LBC	WASHER FLAT
2	13	GA-101	GASKET
2	12	GA-100	GASKET
2	11	GA-104	GASKET
18	10	FW25MSS	WASHER, FLAT
12	9	NTN2520SS14	NUT, HEX
2	8	A-100	STUD, SUB ASSY
2	7	NS-101	INSULATOR, INSIDE
2	6	NS-100	INSULATOR, OUTSIDE
4	5	LWE04MRC	WASHER LOCK
4	4	SCBS0490SS5	SCREW, MACHINE
1	3	UG-58 A/U	RECEPTACLE
1	2	GA-111	GASKET
1	1	PM-110	CASE

REQ. PER UNIT	MODEL	PROJECT NO.	ASSY. NO.	DATE	FINISH & SPEC. NO.
1	HLC-2			4-14-55	
1	HLC-1			3-14-55	
USED ON					