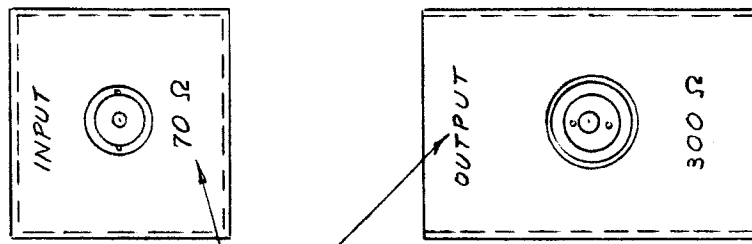


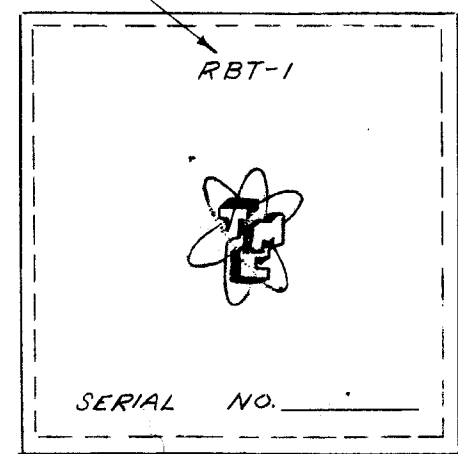
IF IT IS FOUND DESIRABLE TO CHANGE ANY TOLERANCE OR OTHER DETAIL SPECIFIED ON THIS DRAWING NOTIFY THE PURCHASER PROMPTLY.

MAXIMUM ALLOWABLE TOLERANCES HAVE BEEN DETERMINED AND DEVIATIONS WILL BE CAUSE FOR REJECTION. REMOVE ALL BURRS AND SHARP EDGES

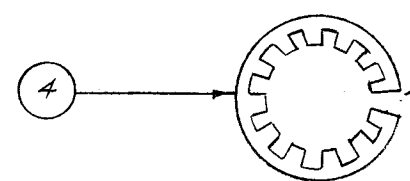
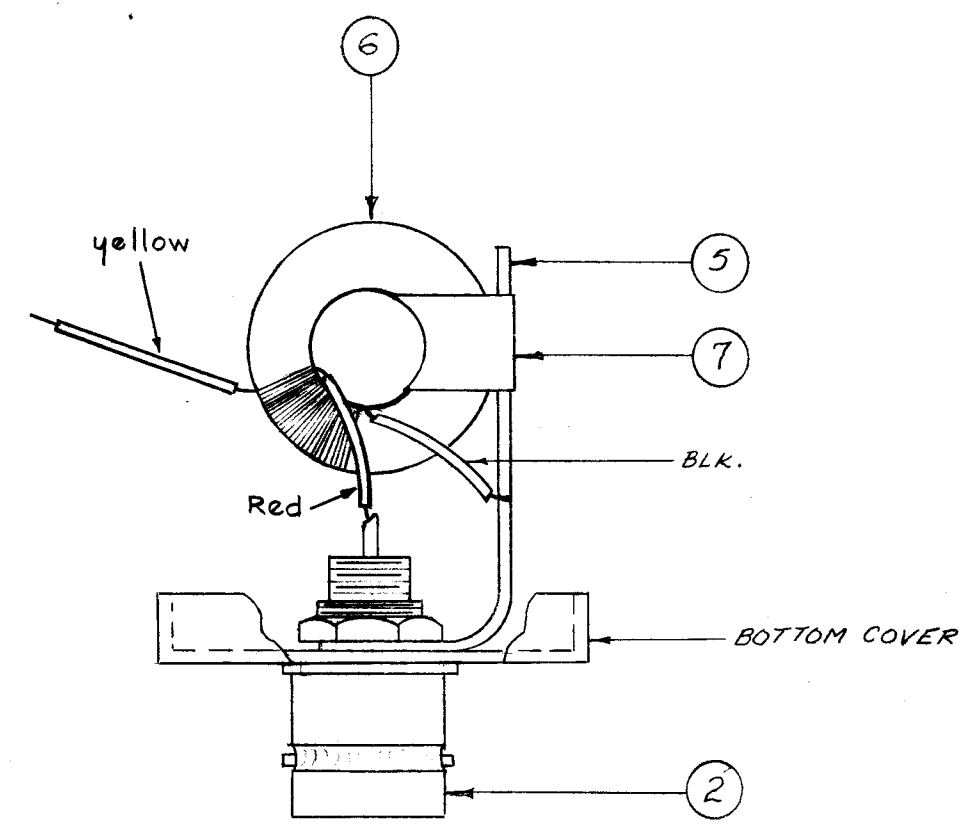
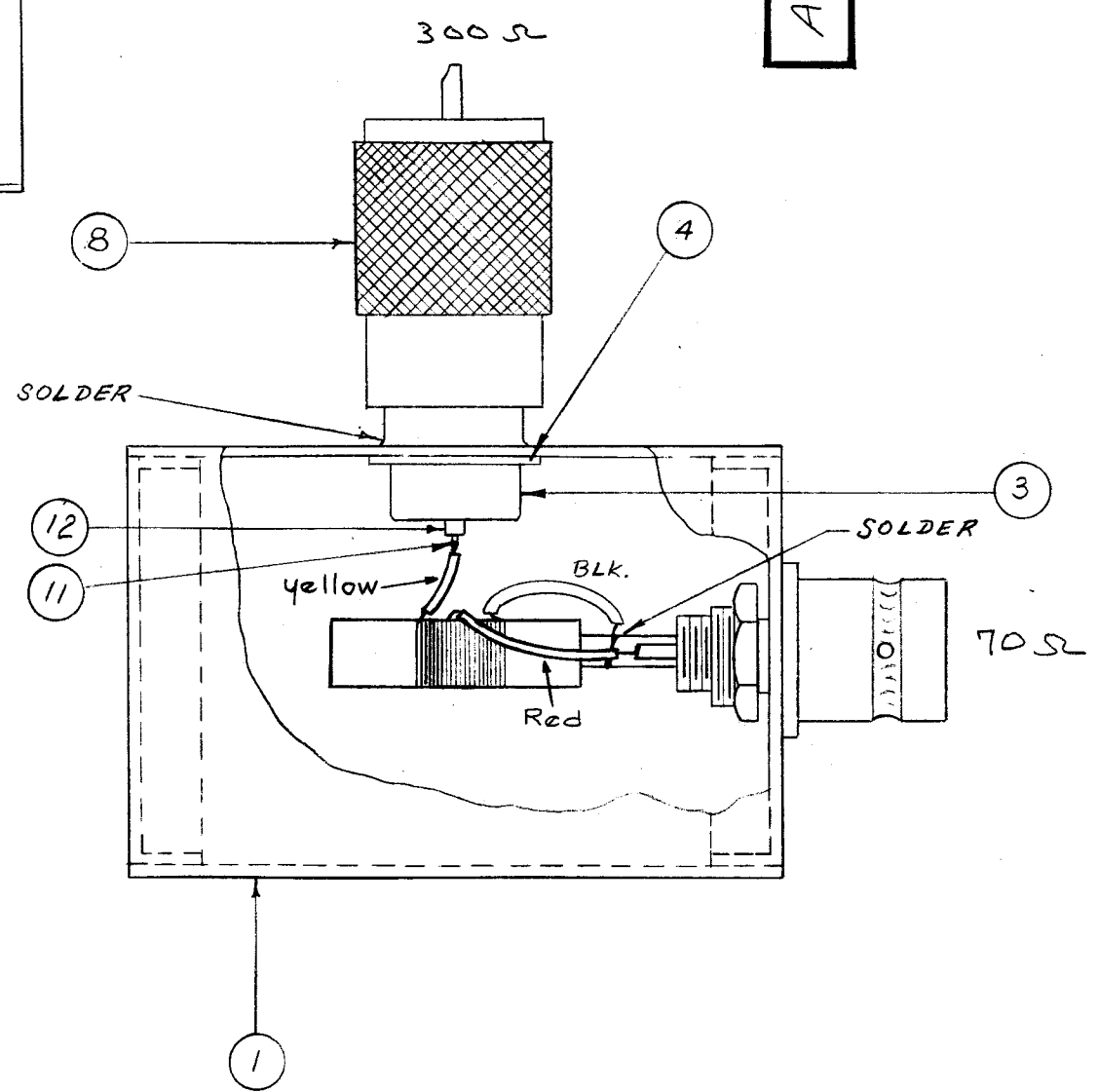
A-947 B



STAMP AS SHOWN



TOP COVER



NOTE:
NOTCH OUT AS SHOWN

NOTE:
S-114 - ZINC CHROMATE PRIMER
S-115 - SMOOTH GRAY ENAMEL

1 7/16	12	PX-104-3-042	INSULATION SLEEVING
1 3/16	11	WL-100-5	WIRE, BUSS BAR
X	10	BS-100	SOLDER, SOFT
X	9	GL-106	POTTING COMPOUND (PLASTIC)
1	8	PL-259A-TEF	CONNECTOR, PLUG, RF, UHF
X	7	TA-105-1	TAPE, MASKING
1	6	A-1083	TRANSFORMER (WINDING DATA)
1	5	TE-111-2	LUG, SOLDER
1	4	LW137MRC	LOCK WASHER, INTERNAL
1	3	UG-176/U	CONNECTOR
1	2	UG-625/U	RECEPTACLE
1	1	BX-131	CASE TRANSFORMER

REQ. ITEM	PART NO.	DESCRIPTION	SYMBOL
THE TECHNICAL MATERIEL CORP.			
MAMARONECK, NEW YORK			
RBT-1 ASSEMBLY			
STOCK SIZE			
MATERIAL		WEIGHT PER PC.	
TYPE & TEMPER		P.B.-3-3-55	
HEAT TREAT. SPEC.		DRAWN <i>BB</i>	
SEE NOTE		ELEC. DES. APP. <i>BB</i>	
FINISH & SPEC. NO.		MECH. DES. APP. <i>APP</i>	
		CHECKED	
		FINAL APPROVAL	

B	1	ITEM*8 WAS PL-259	3.254	11093	WB	@	
A	1	Wiring changed	9-29-59	1305	J.C.B.		
ISSUE	ITEM	CHANGED FROM	DATE	CN. NO.	DRAFTS	CHECKER	ENG. APP.
TOLERANCES			SCALE:				
ALL OTHERS	DEC. DIM. ±	DRILL, PUNCH, COMMERCIAL STOCK					
	FRAC. DIM. ±	SIZES AND MANUFACTURERS					
	ANGULAR DIM. ±	TOLERANCES ARE NOT INCLUDED.					
1	RBT-1	PROJECT NO.	3-3-55				
REQ. PER UNIT	MODEL	ASS'Y. NO.	DATE				
USED ON							

A-947 B