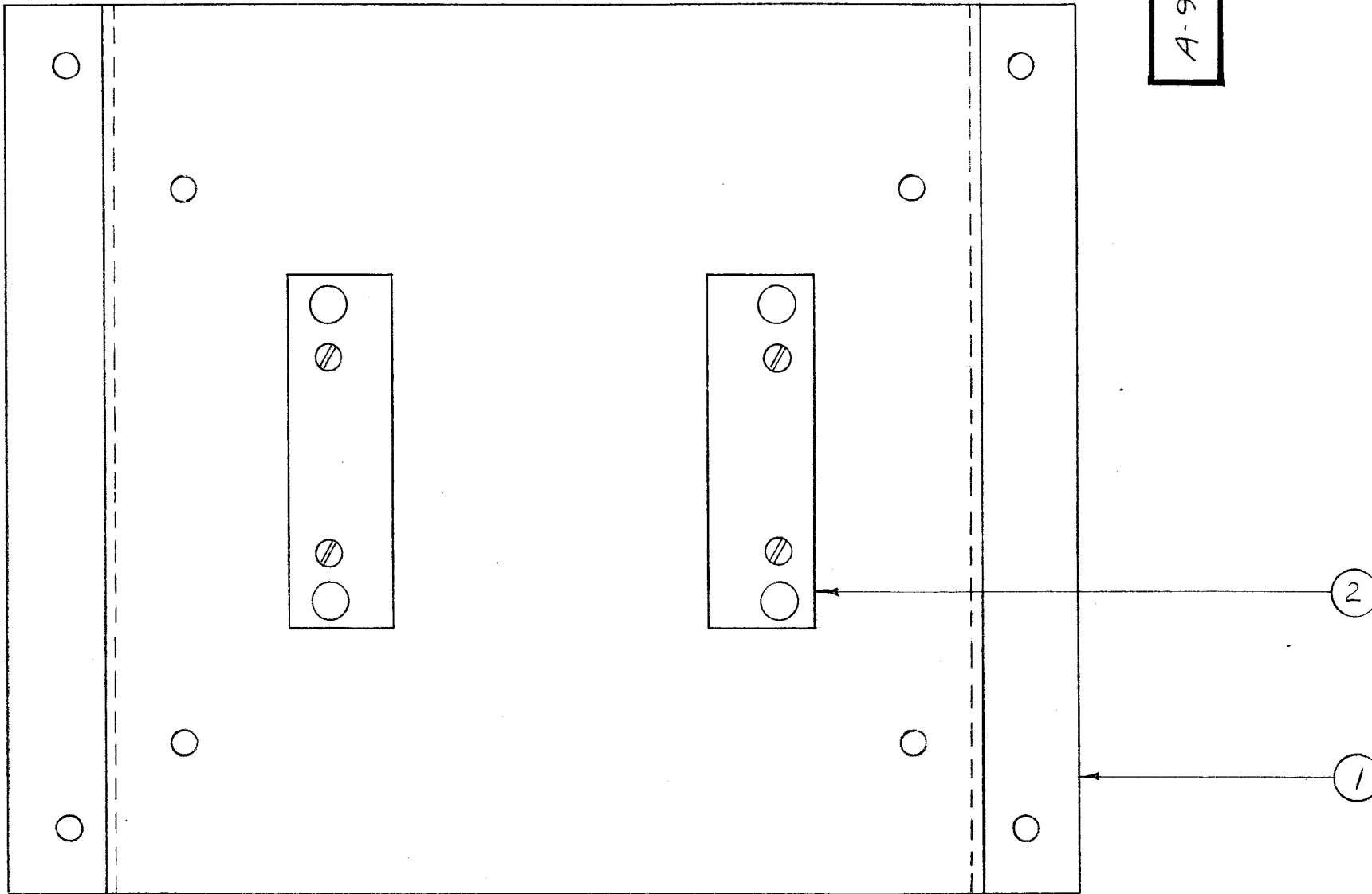


IF IT IS FOUND DESIRABLE TO CHANGE ANY TOLERANCE OR OTHER DETAIL SPECIFIED ON THIS DRAWING NOTIFY THE PURCHASER PROMPTLY.

MAXIMUM ALLOWABLE TOLERANCES HAVE BEEN DETERMINED AND DEVIATIONS WILL BE CAUSE FOR REJECTION. REMOVE ALL BURRS AND SHARP EDGES

A-935 A



OBsolete
 ASSY NOT REQUIRED
 MS-620 IS P/O A-798(CASE)
 12/30/57
 ah file

4	5	NTH0632BC10	NUT, HEX.	
4	4	LWEO6MRC	LOCK WASHER, EXT.	
4	3	SCFS0632BC8	SCREW, MACHINE	
2	2	MS-620	MOUNTING PLATE SPACER	
1	1	MS-545	CASE SUPPORT	
REQ. ITEM		PART NO.	DESCRIPTION	SYMBOL
			THE TECHNICAL MATERIEL CORP. MAMARONECK, NEW YORK	
STOCK SIZE				
MATERIAL			WEIGHT PER PC.	
TYPE & TEMPER			P.B. 2-14-55 <i>PB</i> <i>PB</i>	
HEAT TREAT. SPEC.			DRAWN <i>file</i> ELEC. DES. APP. <i>QUPB</i> MECH. DES. APP.	
FINISH & SPEC. NO.			CHECKED <i>file</i> FINAL APPROVAL <i>QUPB</i>	
				A-935 A

A	1	FINISH NOTE DELETED	3-24-55	1	PB	<i>file</i>	<i>QUPB</i>
ISSUE	ITEM	CHANGED FROM	DATE	CN. NO.	DRAFTS	CHECKER	ENG. APP.
TOLERANCES			SCALE:				
ALL OTHERS	DEC. DIM. ± FRAC. DIM. ± ANGULAR DIM. ±		DRILL, PUNCH, COMMERCIAL STOCK SIZES AND MANUFACTURERS TOLERANCES ARE NOT INCLUDED.				
1	VRA-2		PROJECT NO.		ASS'Y. NO.		2-14-55
REQ. PER UNIT	USED ON						