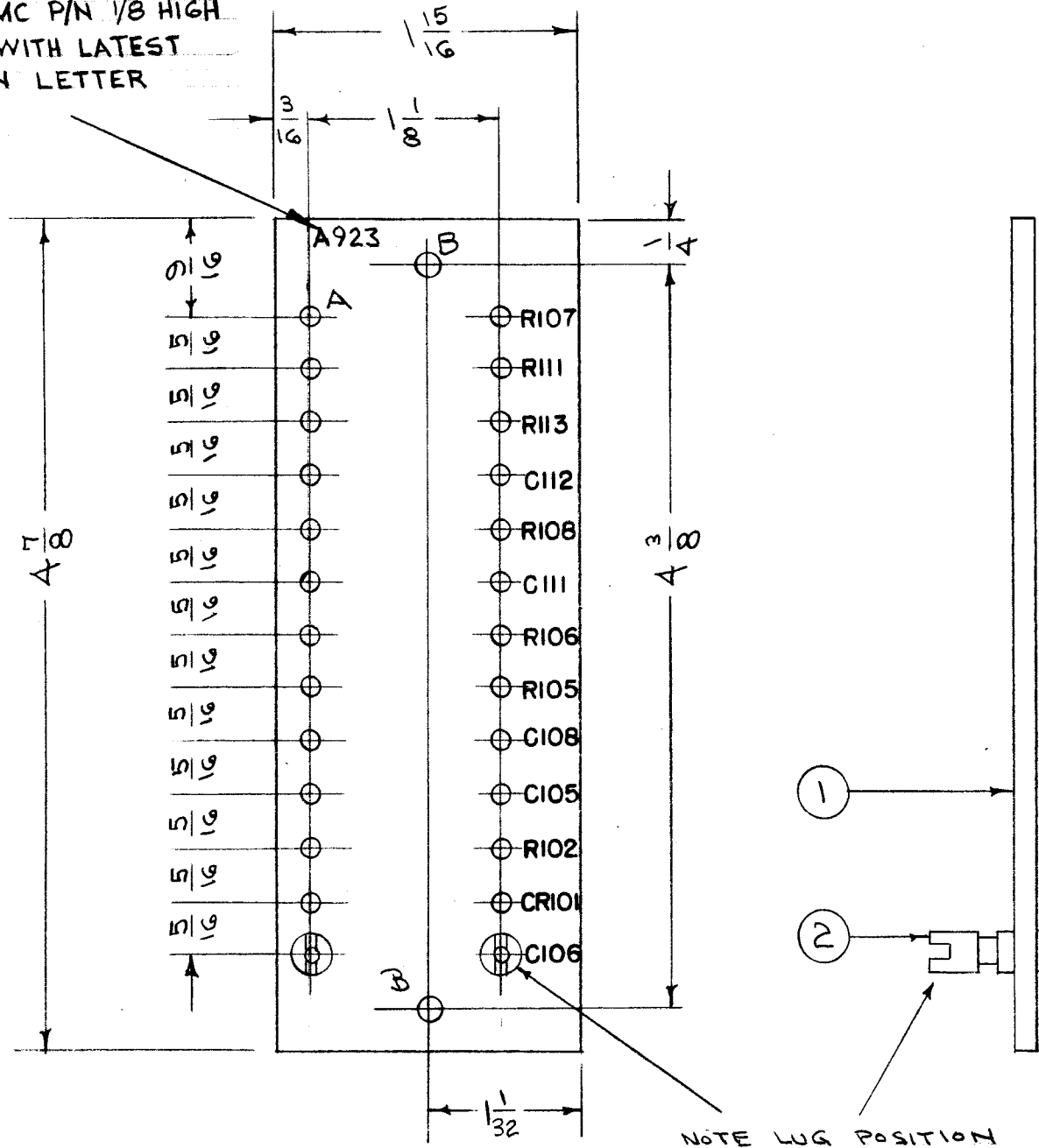


IF IT IS FOUND DESIRABLE TO CHANGE ANY TOLERANCE OR OTHER DETAIL SPECIFIED ON THIS DRAWING NOTIFY THE PURCHASER PROMPTLY.

MAXIMUM ALLOWABLE TOLERANCES HAVE BEEN DETERMINED AND DEVIATIONS WILL BE CAUSE FOR REJECTION. REMOVE ALL BURRS AND SHARP EDGES

A-923 B

MARK TMC P/N 1/8 HIGH  
GOTHIC WITH LATEST  
REVISION LETTER



A-2.9 M.M. (.114) D.  
B-1/64 (.0156) D.

26 HOLES REQ.  
2 " " "

NOTE FINISH:  
S113 FUNGUS RESISTANT VARNISH,  
AFTER STAMPING & BEFORE LUGS  
ARE STAKED

NOTE  
LETTERING BLACK  
GOTHIC 1/8 HIGH

MARKING PROCESS: AS PER TMC SPECIFICATION S-727.

26	2	TE-109-3	TERMINAL, TURRET	
1	1	PX-25A	TERM. BD. #2 (NO DRAWING)	
REQ. ITEM	PART NO.		DESCRIPTION	SYMBOL
.125			THE TECHNICAL MATERIEL CORP.	
STOCK SIZE			MAMARONECK, NEW YORK	
PHENOLIC		—H—	TERM. BD. NO. 2, P.S.	
MATERIAL		WEIGHT PER PC.	SUB ASSEMBLY.	
XXXXP LAMINATE			CDD. 1-27-55	BB
TYPE & TEMPER			DRAWN	ELEC. DES. APP.
—H—			1-27-55	MECH. DES. APP.
HEAT TREAT. SPEC.			CHECKED	FINAL APPROVAL
SEE NOTE				
FINISH & SPEC. NO.				

B	1	CLERICAL CHANGE	3-22-65	—	2Z	JCB	
A	2	1/15/16 WAS 1/13/16	5-31-55	1	P.B.	JAD	
	1	1/32 WAS 29/32					
ISSUE	ITEM	CHANGED FROM	DATE	CN. NO.	DRAFTS	CHECKER	ENG. APP.

TOLERANCES		SCALE:
ALL OTHERS	DEC. DIM. ± FRAC. DIM. ± ANGULAR DIM. ±	DRILL, PUNCH, COMMERCIAL STOCK SIZES AND MANUFACTURERS TOLERANCES ARE NOT INCLUDED.
	1/64	

1	VOX-2	291		1-27-55
REQ. PER UNIT	MODEL	PROJECT NO.	ASSY. NO.	DATE

USED ON

A-923 B