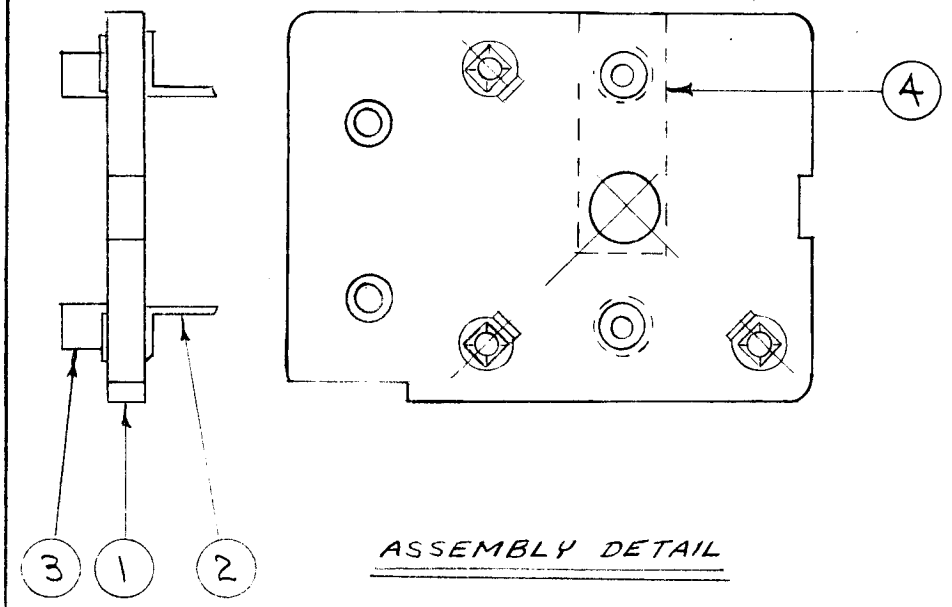
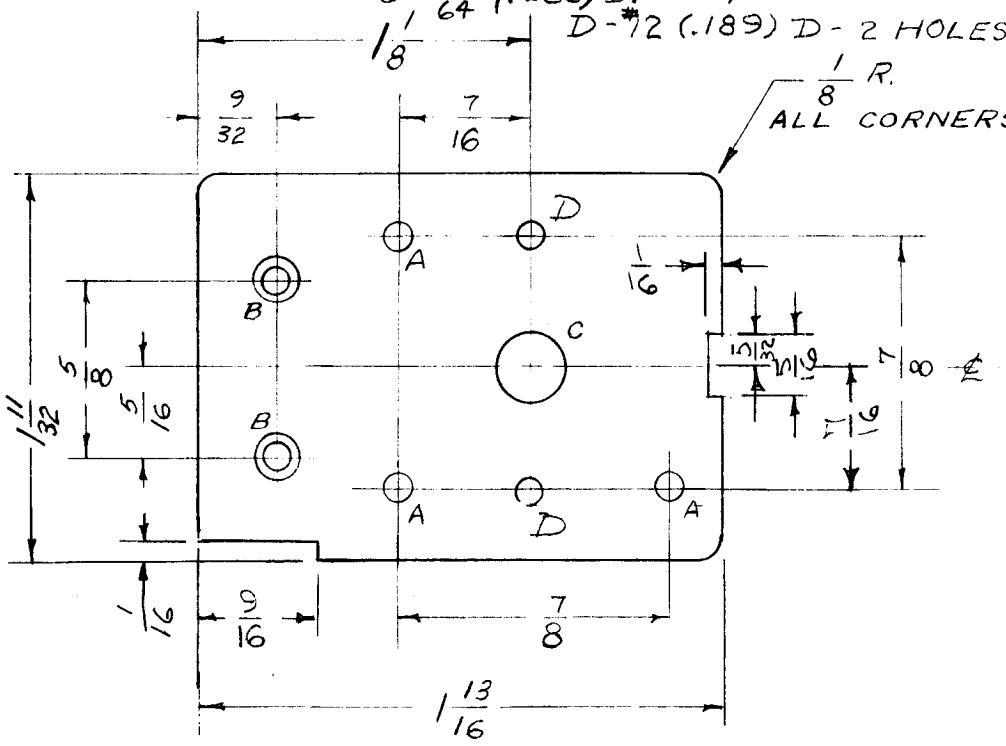


A-29 (.136) D. 3 HOLES
 B-DRILL & C'SNK.
 FOR 6-32 FHS 2 HOLES
 C- $\frac{17}{64}$ (.265) D. 1 "
 D- $\frac{7}{2}$ (.189) D- 2 HOLES

REQ. PER UNIT	USED ON			A-908	J
	MODEL	ASS'Y. NO.	DATE		
1	GPR	A-1043	6-21-55		



MACHINING DETAIL

ASSEMBLY DETAIL

J	1	9/16 DIM. WAS 1/2	4-27-62	6658	EE	JDE	MCA
H	1	COLOR CODE DELETED	7/27/56	8	FA	COB	ASJ
G	1	1/2 X 1/16 NOTCH ADDED	4/24/56	7	FA	COB	WJ
F	1	7/8 WAS 15/16	3/6/56	6	FB	FA	WJ
E	1	1/2 NOTCH DELETED	1-4-56	5	P3	FA	WJ
D	1	LUGS POSITIONS CHANGED	11-28-55	4	FB	PL.K.	G.T.O.
C	1	5/16 CUTOUT ADDED	7-18-55	3	COB	FA	WJ
B	2	MACHINING DETAIL ADDED	6-21-55	2	PB	FA	WJ
B	1	REDRAWN					

1	4	MS-132	GROUND STRAP	
2	3	TE-108-1	STANDOFF	
3	2	TE-151	LUG	
1	1	PX-251	BOARD, TERMINAL BFO (NO DWG.)	
REQ. ITEM	PART NO.		DESCRIPTION	SYMBOL
1/16 THK. STOCK SIZE			THE TECHNICAL MATERIEL CORP. MAMARONECK, NEW YORK	
BAKELITE			BFO TERMINAL BOARD	
MATERIAL			SUB ASSY, GPR	
XXXP LAMINATE		—#—	DR. 6-21-55	WJ
TYPE & TEMPER		HEAT TREAT. SPEC.	DRAWN	CHECKED
NATURAL				
FINISH & SPEC. NO.		ELEC. DES. APP.	MECH. DES. APP.	
				A-908
				J

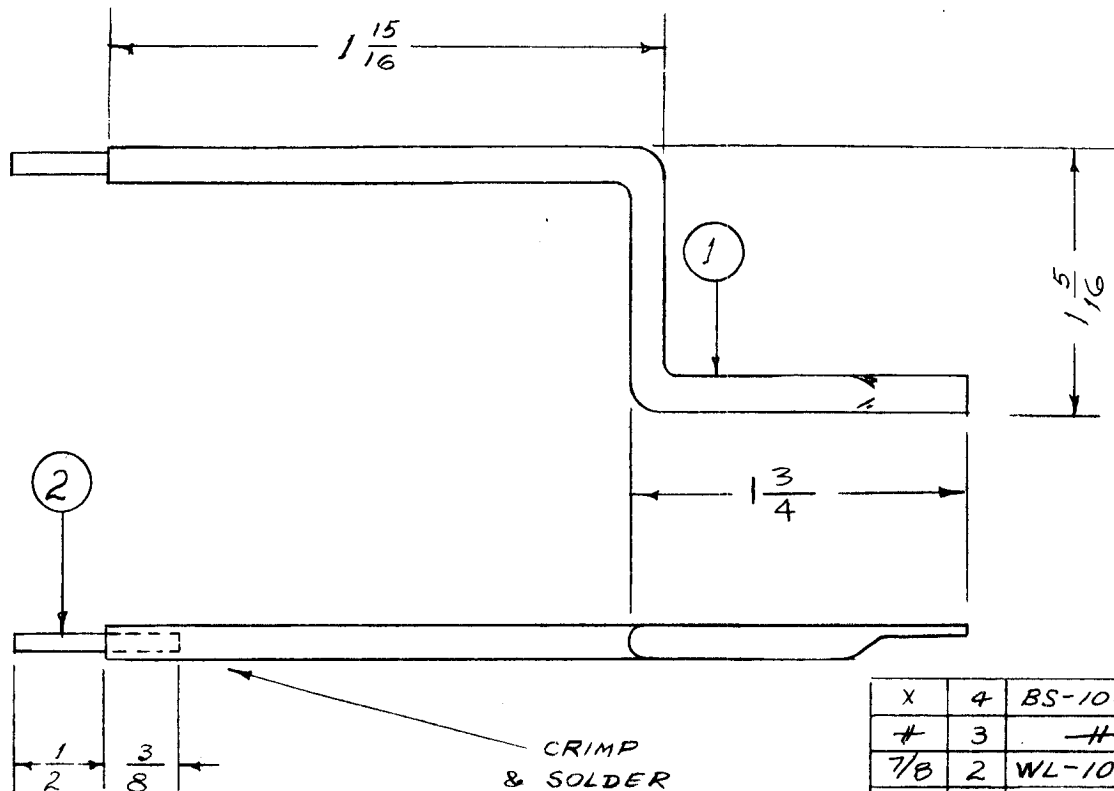
ISSUE	ITEM	CHANGED FROM	DATE	CH. NO.	DRAFTS	CHECKER	ENG. APP.
TOLERANCES		SCALE:					
DEC. DIM. ±		MAXIMUM ALLOWABLE TOLERANCES HAVE BEEN DETERMINED AND ANY DEVIATIONS WILL BE CAUSE FOR REJECTION.					
FRAC. DIM. ± 1/64		REMOVE ALL BURRS AND SHARP EDGES					
ANGULAR DIM. ±							

IF IT IS FOUND DESIRABLE TO CHANGE ANY TOLERANCE OR OTHER DETAIL SPECIFIED ON THIS DRAWING NOTIFY THE PURCHASER PROMPTLY.

A-916 B

MAXIMUM ALLOWABLE TOLERANCES HAVE BEEN DETERMINED AND DEVIATIONS WILL BE CAUSE FOR REJECTION. REMOVE ALL BURRS AND SHARP EDGES

REQ. PER. UNIT	USED ON			
	MODEL	PROJECT NO.	ASS'Y. NO.	DATE
1	VRA-1 VRA-2			1-14-55



X	4	BS-100	SOLDER, SOFT.	
#	3	---	DELETED	
7/8	2	WL-100-1	WIRE, BUSS BAR 10 GA	
1	1	FP-145	CONNECTOR, COAX. (NO DRAWING)	
REQ.	ITEM	PART NO.	DESCRIPTION	SYMBOL
---			THE TECHNICAL MATERIEL CORP. MAMARONECK, NEW YORK CONNECTOR, COAX. ASSY. MODEL VRA-1 VRA-2	
STOCK SIZE				

MATERIAL		WEIGHT PER PC.		
---		---		
TYPE & TEMPER				

HEAT TREAT. SPEC.				
SILVER PLATE - S245				
CLEAR IRIDITE - S423				
FINISH & SPEC. NO.				
CHECKED			FINAL APPROVAL	
AND 1-14-55				
			A-916 B	

B	1	FINISH WAS S105	9/28/66	116895	HGA	CPA	MA
A	3	1 3/4 WAS 1	4/25/57	1	16	JAL	ALL
A	2	ITEM 2 QUAN WAS 1 1/2					
A	1	ITEM 3 (TE-143) DELETED					
ISSUE	ITEM	CHANGED FROM	DATE	CN. NO.	DRAFTS	CHECKER	ENG. APP.

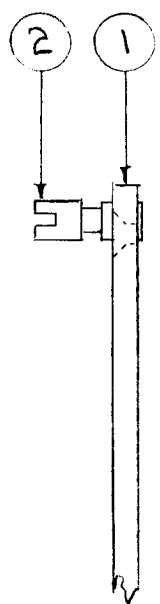
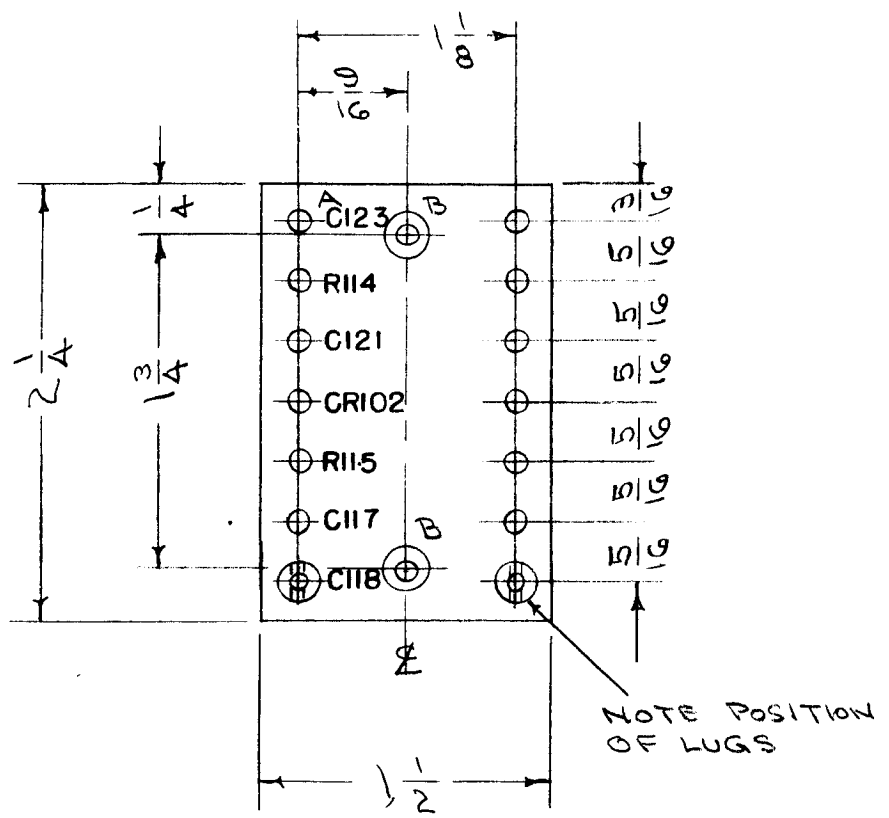
TOLERANCES		SCALE
ALL OTHERS	DEC. DIM. ± FRAC. DIM. ± 1/64 ANGULAR DIM. ±	DRILL, PUNCH, COMMERCIAL STOCK SIZES AND MANUFACTURERS TOLERANCES ARE NOT INCLUDED.

IF IT IS FOUND DESIRABLE TO CHANGE ANY TOLERANCE OR OTHER DETAIL SPECIFIED ON THIS DRAWING NOTIFY THE PURCHASER PROMPTLY.

A-922

MAXIMUM ALLOWABLE TOLERANCES HAVE BEEN DETERMINED AND DEVIATIONS WILL BE CAUSE FOR REJECTION. REMOVE ALL BURRS AND SHARP EDGES

REQ. PER UNIT	USED ON			
	MODEL	PROJECT NO.	ASS'Y. NO.	DATE
1	VOX-2	291		1-27-55



A - 2.9 M.M. (.114) D. 14 REQ.
 B - DRILL & C'SINK #6FHS 2 "

NOTE FINISH:
 S113 FUNGUS RESISTANT VARNISH,
 AFTER STAMPING & BEFORE
 LUGS ARE STAKED

MARKING PROCESS: AS PER TMC SPECIFICATION S-727.

LETTERING: 1/8 HIGH BLACK, GOTHIC
 LOCATED AS SHOWN.

14	2	TE-109-3	TERMINAL, TURRET	
1	1	PX-253	TERM. BD. NO 1 (NO DRAWING)	
REQ.	ITEM	PART NO.	DESCRIPTION	SYMBOL
.125 THK.			THE TECHNICAL MATERIEL CORP.	
STOCK SIZE			MAMARONECK, NEW YORK	
PHENOLIC		#	TERM. BD. NO 1., P.S.	
MATERIAL		WEIGHT PER PC.	SUB ASSEMBLY	
XXXP LAMINATE			CDD. 1-27-55	
TYPE & TEMPER			DRAWN	
H			ELEC. DES. APP.	
HEAT TREAT. SPEC.			MECH. DES. APP.	
SEE NOTE			CHECKED	
FINISH & SPEC. NO.			FINAL APPROVAL	
			A-922	

ISSUE	ITEM	CHANGED FROM	DATE	CN. NO.	DRAFTS	CHECKER	ENG. APP.
TOLERANCES		SCALE					
ALL OTHERS	DEC. DIM. ±	DRILL, PUNCH, COMMERCIAL STOCK					
	FRAC. DIM. ±	SIZES AND MANUFACTURERS					
	ANGULAR DIM. ±	TOLERANCES ARE NOT INCLUDED.					

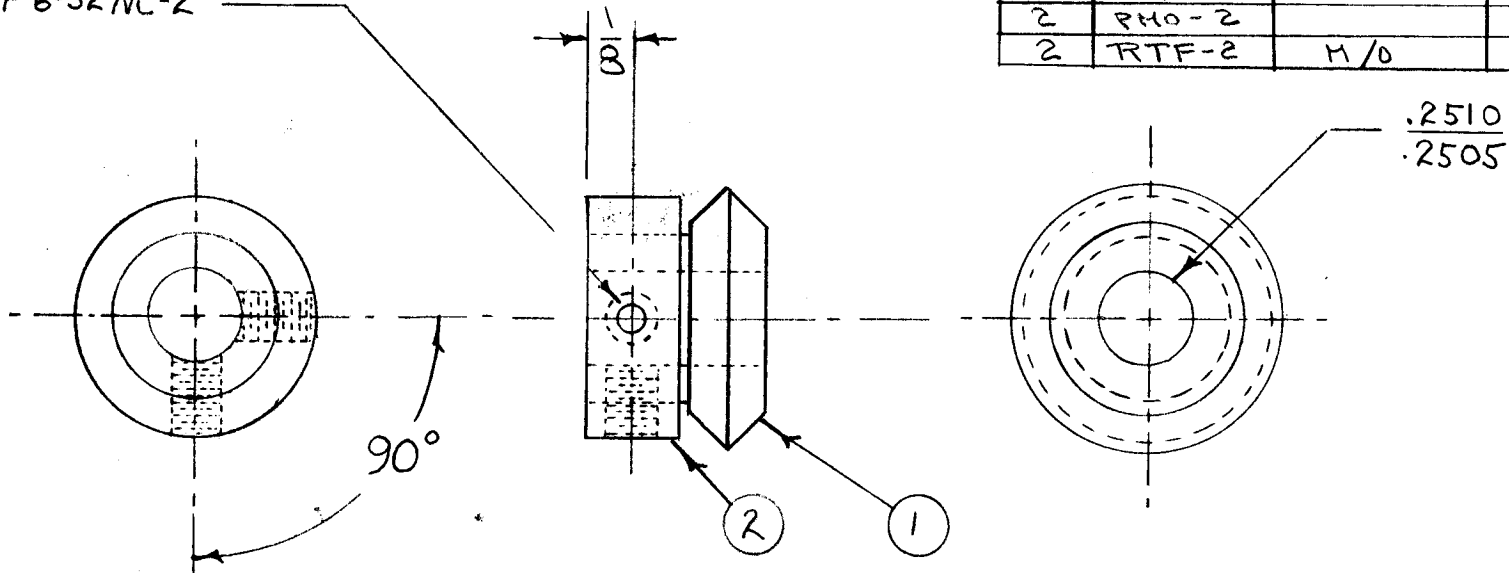
IF IT IS FOUND DESIRABLE TO CHANGE ANY TOLERANCE OR OTHER DETAIL SPECIFIED IN THIS DRAWING NOTIFY THE PURCHASER PROMPTLY.

A-939 B

MAXIMUM ALLOWABLE TOLERANCES HAVE BEEN DETERMINED AND DEVIATIONS WILL BE CAUSE FOR REJECTION. REMOVE ALL BURRS AND SHARP EDGES

REQ. PER UNIT	USED ON			
	MODEL	PROJECT NO.	ASS'Y. NO.	DATE
2	VOX-1			3-3-55
2	VOX-2			3-3-55
2	RTF			2/2/56
2	PMO-1			4/17/56
2	PMO-2			4/17/56
2	RTF-2	M/O		11/20/58

DRILL & TAP 6-32 NC-2
2 REQ'D



1	2	PM-335	COLLAR, MITER GEAR	
1	1	GR-117	GEAR, MITER	
REQ.	ITEM	PART NO.	DESCRIPTION	SYMBOL
STOCK SIZE			THE TECHNICAL MATERIEL CORP.	
MATERIAL			MAMARONECK. NEW YORK	
WEIGHT PER PC.			MITER GEAR ASSEMBLY	
TYPE & TEMPER			WDE	WDE
HEAT TREAT. SPEC.			DRAWN	ELEC. DES. APP.
FINISH & SPEC. NO.			CHECKED	MECH. DES. APP.
			FINAL APPROVAL	
			A-939 B	

B	1	SUPPLIER NOTE DELETED	24-639125	WDE	WDE	WDE	
A	1	GEAR LENGTH REDUCED 1/32"	4/17/56	1	WDE	WDE	
ISSUE	ITEM	CHANGED FROM	DATE	CN. NO.	DRAFTS	CHECKER	ENG. APP.

TOLERANCES		SCALE
ALL OTHERS	DEC. DIM. ± FRAC. DIM. ± ANGULAR DIM. ±	DRILL, PUNCH, COMMERCIAL STOCK SIZES AND MANUFACTURERS TOLERANCES ARE NOT INCLUDED.

IF IT IS FOUND DESIRABLE TO CHANGE ANY TOLERANCE OR OTHER DETAIL SPECIFIED ON THIS DRAWING NOTIFY THE PURCHASER PROMPTLY.

A-942 F

MAXIMUM ALLOWABLE TOLERANCES HAVE BEEN DETERMINED AND DEVIATIONS WILL BE CAUSE FOR REJECTION.
REMOVE ALL BURRS AND SHARP EDGES

REQ. PER UNIT

USED ON

MODEL

PROJECT NO.

ASS'Y. NO.

DATE

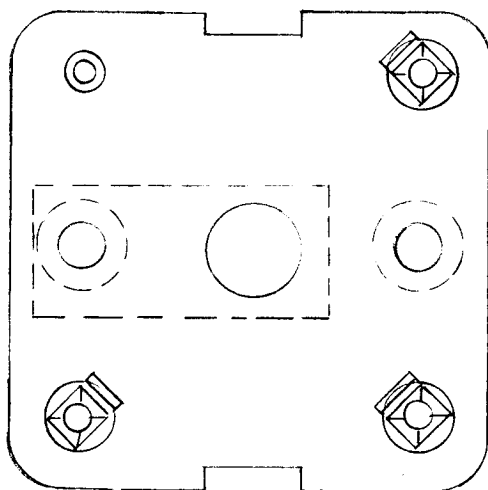
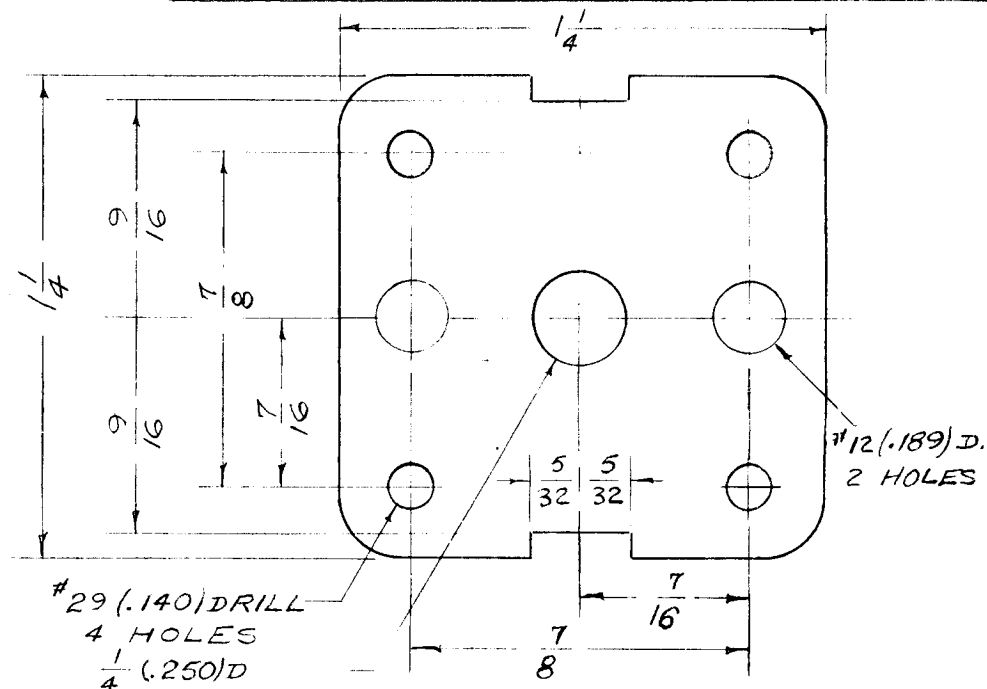
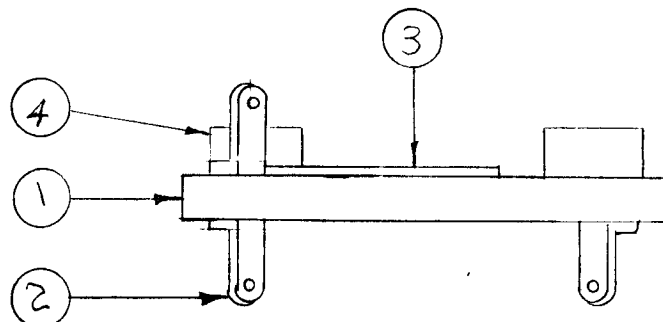
1

GPR

297

A-1041

3-1-55



REQ.	ITEM	PART NO.	DESCRIPTION	SYMBOL
2	4	TE-108-6	STANDOFF	
1	3	MS-132	GROUND STRAP	
3	2	TE-151	LUG	
1	1	PX-262	TERMINAL BOARD	
$\frac{1}{16}$ THK. STOCK SIZE			THE TECHNICAL MATERIEL CORP. MAMARONECK, NEW YORK	
PHENOLIC #4 MATERIAL WEIGHT PER PC.			TERM. BD. ASSY 2nd OSC. TANK	
XXXP LAMINATE TYPE & TEMPER			CDD 3-1-55	HHH ELEC. DES. APP.
# HEAT TREAT. SPEC.			JALDe CHECKED	WLL MECH. DES. APP.
NATURAL FINISH & SPEC. NO.			G.T.O. FINAL APPROVAL	
			A-942 F	

F	NO DWG" DEL. FR IT 1; QTY IT 2 WAS 4	10.18.66	17039	WLD	JAL		
ISSUE	ITEM	CHANGED FROM	DATE	CN. NO.	DRAFTS	CHECKER	ENG. APP.

TOLERANCES		SCALE
ALL OTHERS	DEC. DIM. \pm FRAC. DIM. $\pm Y64$ ANGULAR DIM. \pm	DRILL, PUNCH, COMMERCIAL STOCK SIZES AND MANUFACTURERS TOLERANCES ARE NOT INCLUDED.

IF IT IS FUND DESIRABLE TO CHANGE ANY TOLERANCE OR OTHER DETAIL SPECIFIED ON THIS DRAWING NOTIFY THE PURCHASER PROMPTLY.

A-944 D

MAXIMUM ALLOWABLE TOLERANCES HAVE BEEN DETERMINED AND DEVIATIONS WILL BE CAUSE FOR REJECTION. REMOVE ALL BURRS AND SHARP EDGES

REQ. PER UNIT	USED ON			
	MODEL	PROJECT NO.	ASS'Y. NO.	DATE
1	GPR	297	A-1037	3-2-55

COIL DATA

COIL FORM - CF -
 4 PI - 150 TURNS
 WIRE - 5/41 LITZ SNE
 DAB ENDS WITH GL-103
 BAKE FOR 1/2 HOUR AT 215° F.
 COAT WITH Q-MAX
 BAKE FOR 1/2 HOUR AT 215° F.

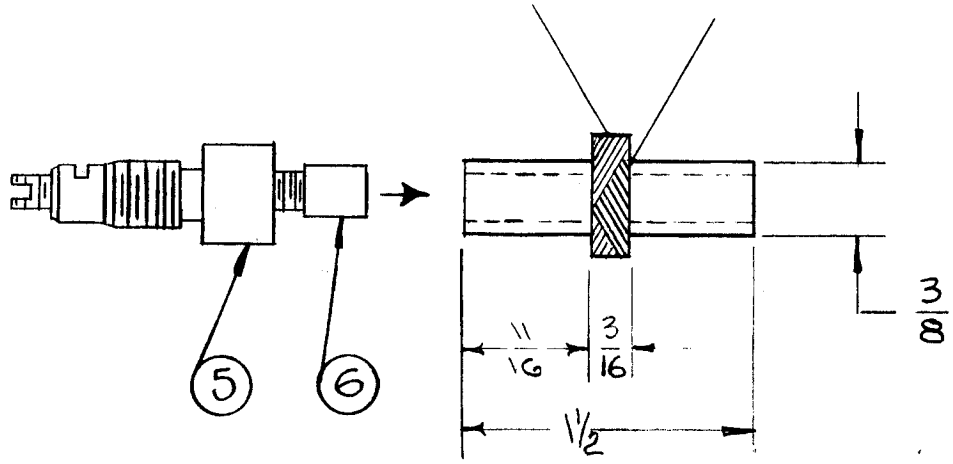
WINDING DATA

CAM GEAR 104
 DRIVER " 68
 CAM " 187

ELECTRICAL DATA (w/o CORE)

L - 240 - 260 μ h
 $R_{dc} = 4.5 - 5.5 \Omega$
 F - 790 KC
 Q - 80 OR HIGHER
 LEADS TO BE APPROX. 3" LONG.

NOTE: ASSEMBLE ITEMS 5&6 TO COIL FORM AND CEMENT WITH ITEM 4 AFTER TESTING.



REQ.	ITEM	PART NO.	DESCRIPTION	SYMBOL
1	6	CI-109-5	CORE	
1	5	SM-110	BUSHING	
X	4	GL-103	CEMENT	
X	3	GL-102	Q-MAX	
X	2	WI-104-541-SN-QS	WIRE, LITZ	
1	1	CF-117-1.5	COIL FORM	

ISSUE	ITEM	CHANGED FROM	DATE	CN. NO.	DRAFTS	CHECKER	ENG. APP.
D	1	Items 5&6 Added	6-1-61	4987	ETS		
C	1	Red dot added	5/17/61	4921	DOM	JCB	
B	3	Rdc Added / C Deleted					
	2	L was 250 μ h					
A	1	WIRE WAS WI-104-A	7/24/60	2	EDD	HA	A.J.T.
	1	BAKE TEMP. WAS 100° F	10-3-55	1	B	FR	G.T.O.

STOCK SIZE		THE TECHNICAL MATERIEL CORP. MAMARONECK, NEW YORK	
MATERIAL		LOAD COIL, XTAL FILTER	
WEIGHT PER PC.		L20	
TYPE & TEMPER		CDD 3-2-55	
HEAT TREAT. SPEC.		DRAWN	ELEC. DES. APP. MECH. DES. APP.
FINISH & SPEC. NO.		CHECKED	FINAL APPROVAL
		A-944 D	

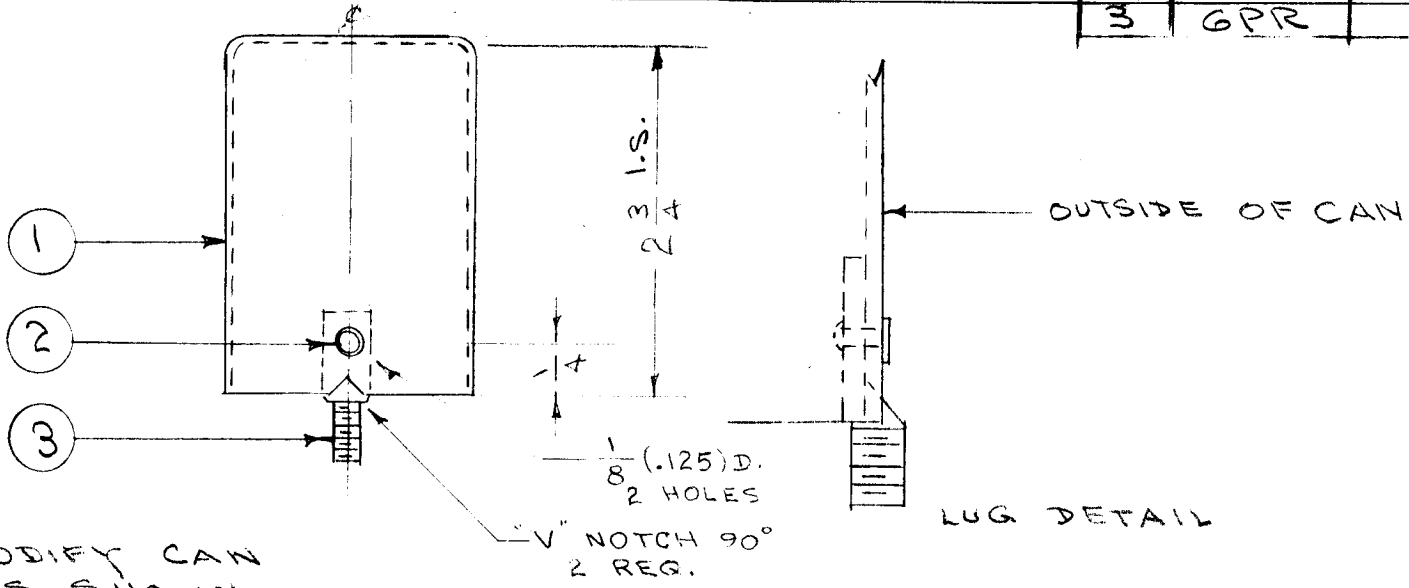
TOLERANCES	SCALE
ALL OTHERS DEC. DIM. \pm FRAC. DIM. \pm 1/64 ANGULAR DIM. \pm	DRILL, PUNCH, COMMERCIAL STOCK SIZES AND MANUFACTURERS TOLERANCES ARE NOT INCLUDED.

IF IT IS FOUND DESIRABLE TO CHANGE ANY TOLERANCE OR OTHER DETAIL SPECIFIED ON THIS DRAWING NOTIFY THE PURCHASER PROMPTLY.

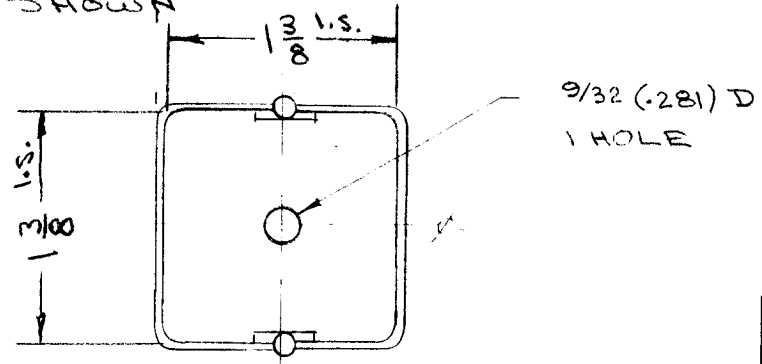
A-949 C

MAXIMUM ALLOWABLE TOLERANCES HAVE BEEN DETERMINED AND DEVIATIONS WILL BE CAUSE FOR REJECTION.
REMOVE ALL BURRS AND SHARP EDGES

REQ. PER UNIT	USED ON			
	MODEL	PROJECT NO.	ASS'Y. NO.	DATE
3	GPR	297	A-1034 A-1038 A-1040	3-4-55



MODIFY CAN AS SHOWN



2	3	SC-107-1	BOLT, SPADE	
2	2	EY-100-1	EYELET	
1	1	BX-102-7	CAN	
REQ.	ITEM	PART NO.	DESCRIPTION	SYMBOL
#			THE TECHNICAL MATERIEL CORP.	
STOCK SIZE			MAMARONECK. NEW YORK	
#			I.F. CAN ASSEMBLY.	
MATERIAL			3.955 MCS	
WEIGHT PER PC.			CDD-3-A-55	
TYPE & TEMPER			###	
HEAT TREAT. SPEC.			DRAWN	
FINISH & SPEC. NO.			ELEC. DES. APP.	
			MECH. DES. APP.	
			G.T.O	
			CHECKED	
			FINAL APPROVAL	
			A-949 C	

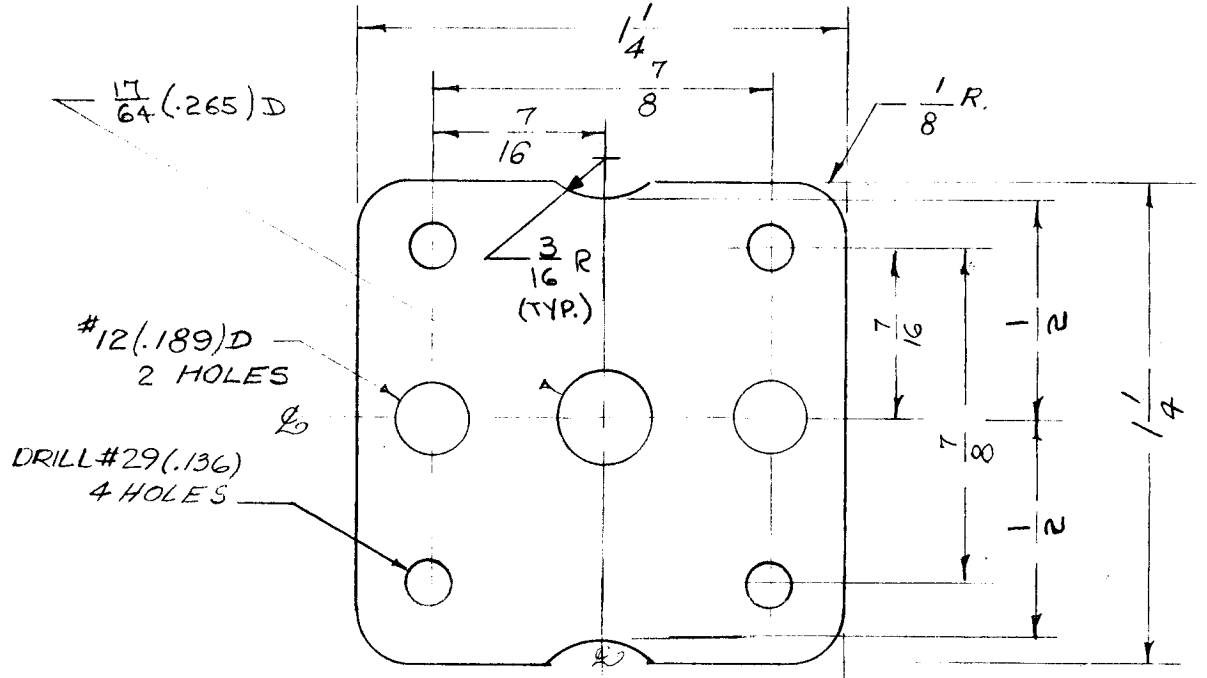
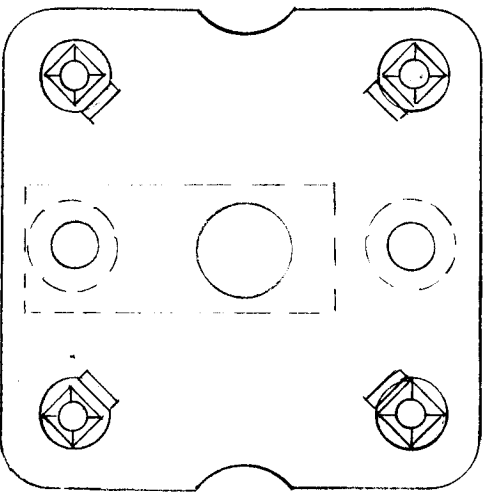
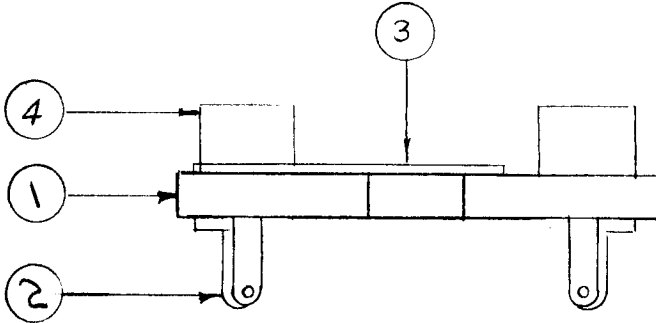
C	1	ITEM WAS FP-108-3	8/27/46	3	ODS	AW	AJJ
B	1	9/32 D was "F" dia.	7/17/55	2	PAW	ODS	WKE
A	1	MACHINING DETAIL ADDED	6/24/55	1	PB	AW	WKE
ISSUE	ITEM	CHANGED FROM	DATE	CN. NO.	DRAFTS	CHECKER	ENG. APP.
TOLERANCES			SCALE				
ALL OTHERS	DEC. DIM. ± FRAC. DIM. ± ANGULAR DIM. ±		DRILL, PUNCH, COMMERCIAL STOCK SIZES AND MANUFACTURERS TOLERANCES ARE NOT INCLUDED.				

IF IT IS FOUND DESIRABLE TO CHANGE ANY TOLERANCE OR OTHER DETAIL SPECIFIED ON THIS DRAWING NOTIFY THE PURCHASER PROMPTLY.

A-976 G

MAXIMUM ALL WABLE TOLERANCES HAVE BEEN DETERMINED AND DEVIATIONS WILL BE CAUSE FOR REJECTION. REMOVE ALL BURRS AND SHARP EDGES

REQ. PER UNIT	USED ON			
	MODEL	PROJECT NO.	ASS'Y. NO.	DATE
1	GPR	297	A-1037	3-25-55



REQ.	ITEM	PART NO.	DESCRIPTION	SYMBOL
2	4	TE-108-6	STANDOFF	
1	3	MS-132	GROUNDING STRAP	
4	2	TE-151	LUG	
1	1	PX-267	TERM. BD. (NO DWG)	
1/16			THE TECHNICAL MATERIEL CORP. MAMARONECK, NEW YORK	
PHENOLIC			TERM. BD. ASSY.	
MATERIAL			LOAD COIL, XTAL FILTER	
WEIGHT PER PC.			CDD: 3-X-55	
XXXP LAMINATE			DRAWN	
TYPE & TEMPER			ELEC. DES. APP.	
#			MECH. DES. APP.	
HEAT TREAT. SPEC.			G.T.O	
NATURAL			CHECKED	
FINISH & SPEC. NO.			FINAL APPROVAL	
			A-976 G	

G	#29(.136) WAS #29(.140)	3-6-67	17920	L.A.K.	J.P. MUB	
F	3/16 R. WAS 5/16 NOTCH DIMS 1/2" WERE 9/16"	4-30-65	13948		J.P. MUB	
ISSUE	ITEM	CHANGED FROM	DATE	CN. NO.	DRAFTS CHECKER	ENG. APP.

TOLERANCES		SCALE
ALL OTHERS	DEC. DIM. ± FRAC. DIM. ± 1/64 AN ULAR DIM. ±	DRILL, PUNCH, COMMERCIAL STOCK SIZES AND MANUFACTURERS TOLERANCES ARE NOT INCLUDED.

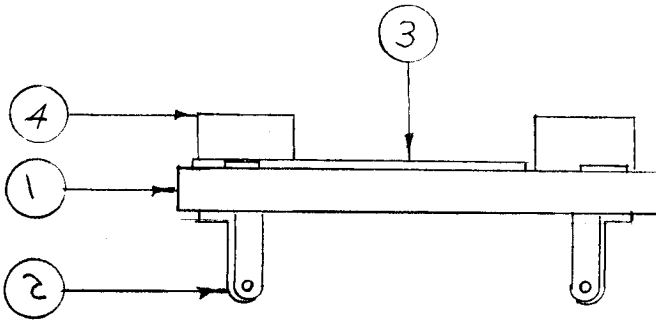
IF IT IS FOUND DESIRABLE TO CHANGE ANY TOLERANCE OR OTHER DETAIL SPECIFIED ON THIS DRAWING NOTIFY THE PURCHASER PROMPTLY.

A-977

F

MAXIMUM ALLOWABLE TOLERANCES HAVE BEEN DETERMINED AND DEVIATIONS WILL BE CAUSE FOR REJECTION. REMOVE ALL BURRS AND SHARP EDGES

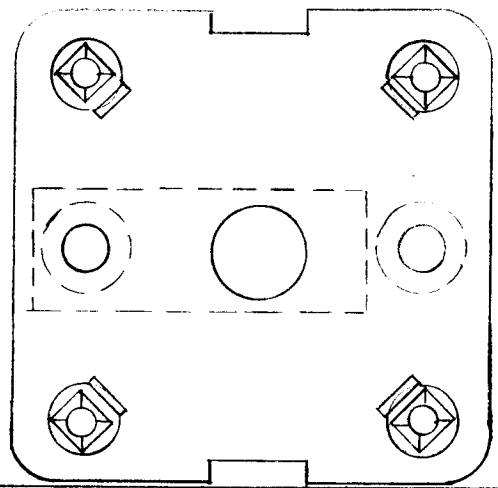
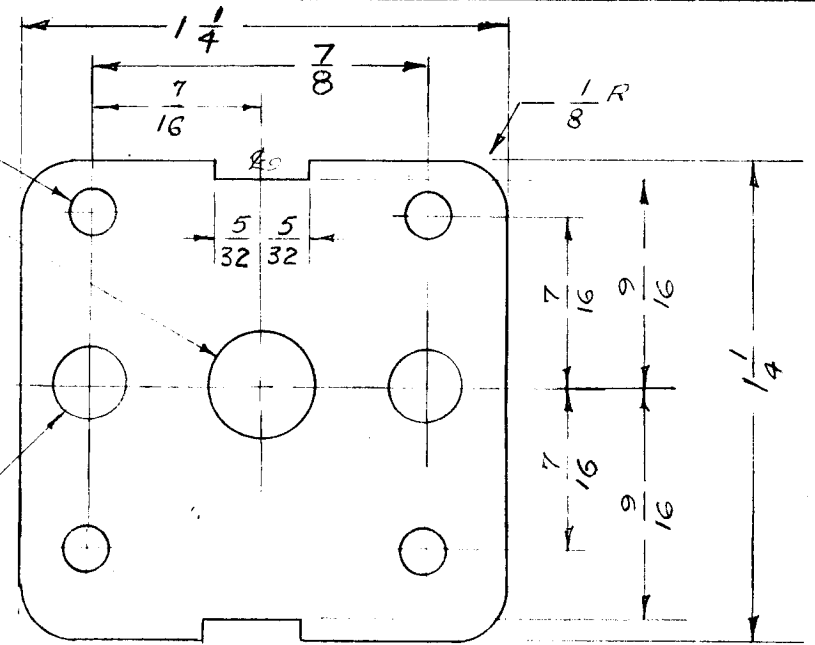
REQ. PER UNIT	USED ON			
	MODEL	PROJECT NO.	ASSY. NO.	DATE
1	G.P.R	297	A-1034 A-1039	3-25-55



#28 (.140) DRILL
4 HOLES

1/4 (.250) D.

#12 (.189) DRILL
2 HOLES



REQ.	ITEM	PART NO.	DESCRIPTION	SYMBOL
2	4	TE-108-6	STANDOFF	
1	3	MS-132	GROUNDING STRAP	
4	2	TE-151	LUG	
1	1	PX-268	TERMINAL BOARD (NO DWG)	

1/16 THK.		THE TECHNICAL MATERIEL CORP.	
STOCK SIZE		MAMARONECK. NEW YORK	
PHENOLIC	#	TERM. BD. ASSY.	
MATERIAL	WEIGHT PER PC.		
XXXP LAMINATE		CDD 3-25-55	
TYPE & TEMPER		###	WDC
DRAWN		ELEC. DES. APP.	MECH. DES. APP.
HEAT TREAT. SPEC.		GT.O	
NATURAL		CHECKED	
FINISH & SPEC. NO.		FINAL APPROVAL	

ISSUE	ITEM	CHANGED FROM	DATE	CN. NO.	DRAFTS	CHECKER	ENG. APP.
F	1	CLERICAL CHANGE	2-17-65	22			
E	1	#28 (.140) DRILL WAS #29 (.140) DRILL	7-11-61	5215	G.D.L.		
D	1	COLOR CODE REMOVED	8/3/56	4	EGD	P.L.R.	ATT
C	1	ITEMS 3 & 4 ADDED	10-12-55	3	PB	WDC	WDC
B	1	MACHINING DETAIL ADD.	9/23/55	2	PB	PAS.	WDC
A	1	COMPLETE REVISION	9/9/55	1	EGD	###	GT.O

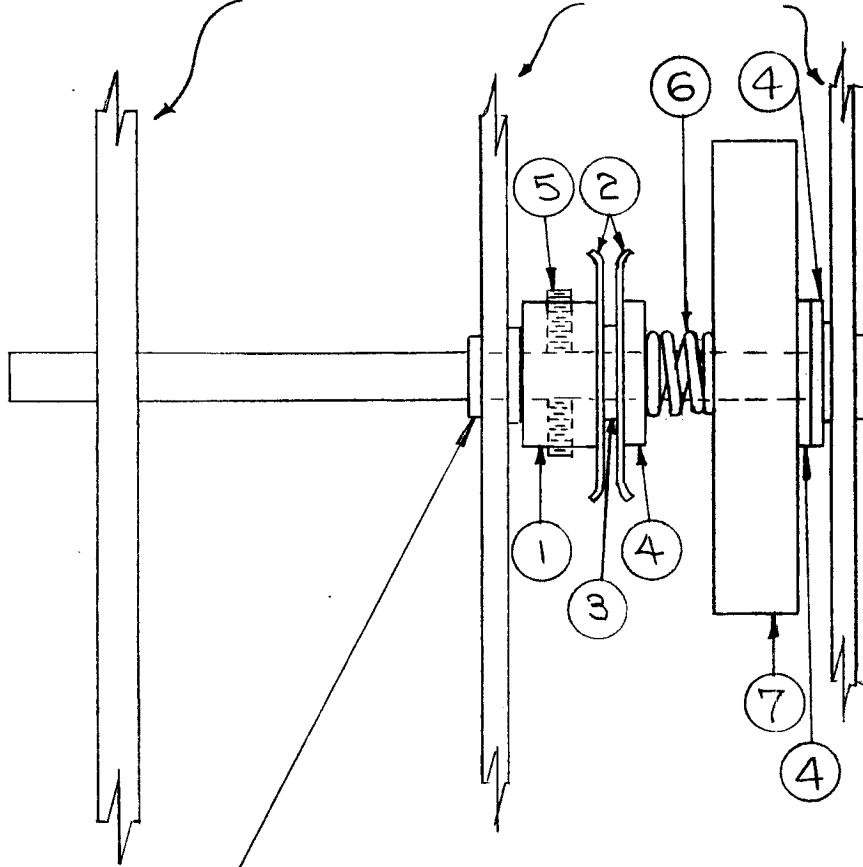
TOLERANCES		SCALE
ALL OTHERS	DEC. DIM. ± FRAC. DIM. ±/64 ANGULAR DIM. ±	DRILL, PUNCH, COMMERCIAL STOCK SIZES AND MANUFACTURERS TOLERANCES ARE NOT INCLUDED.

FRONT PANEL

SUB PANELS

REQ. PER UNIT	297		USED ON	
	MODEL	ASS'Y. NO.	DATE	
2	GPR-90		9-27-56	
2	GPR-90RXD		8-15-63	
2	GPR-91RXD		8-15-63	

A-978 F



CHASSIS

NOTE - THIS BEARING MUST BE VERY TIGHTLY SEATED IN SUB PANEL.

1	7	PM-416	INERTIA WHEEL
1	6	SP-116-R	SPRING
2	5	SLHCOG32SP2	SCREW, MACHINE, HEADLESS
3	4	WA-126	HUB, SHIM
1	3	WA-127	WASHER, FRICTION DRIVE
2	2	WA-122	WASHER, FRICTION
1	1	PM-428	COLLAR

F		IT 7 WAS AN565D642	10.18.66	17039	WHD	<i>[Signature]</i>	<i>[Signature]</i>
E	1	PICT., BUILD-UP & TITLE CHG'D. MOD. NOS. GPR-90RXD & -91RXD ADDED	8-29-63	9871	AK	<i>[Signature]</i>	<i>[Signature]</i>
D	1	ITEM (7) WAS PM-328	5-21-63	9059	<i>[Signature]</i>	<i>[Signature]</i>	<i>[Signature]</i>
C	1	COMPLETE REVISION	9/21/66	3	<i>[Signature]</i>	<i>[Signature]</i>	<i>[Signature]</i>
ISSUE	ITEM	CHANGED FROM	DATE	CH. NO.	DRAFTS	CHECKER	ENG. APP.

REQ. ITEM	PART NO.	DESCRIPTION	SYMBOL
THE TECHNICAL MATERIEL CORP. MAMARONECK, NEW YORK			
STOCK SIZE			
MATERIAL			
TYPE & TEMPER		HEAT TREAT. SPEC.	DRAWN
FINISH & SPEC. NO.		ELEC. DES. APP.	MECH. DES. APP.

ASSEMBLY OF PARTS FOR FRICTION DRIVE

CD 9/21/66

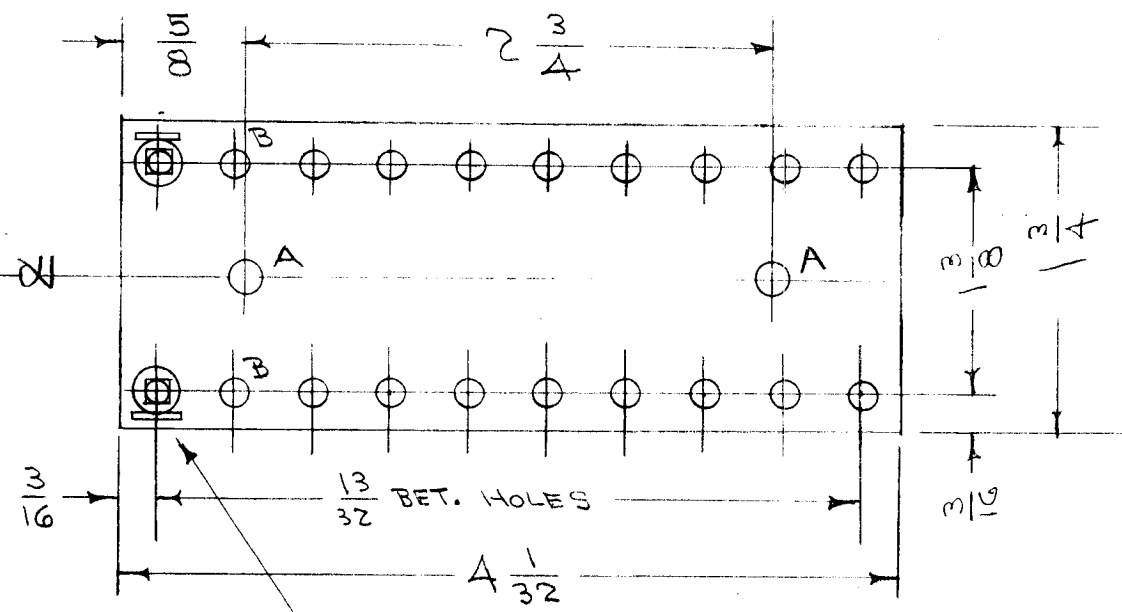
A-978 F

IF IT IS FOUND DESIRABLE TO CHANGE ANY TOLERANCE OR OTHER DETAIL SPECIFIED ON THIS DRAWING NOTIFY THE PURCHASER PROMPTLY.

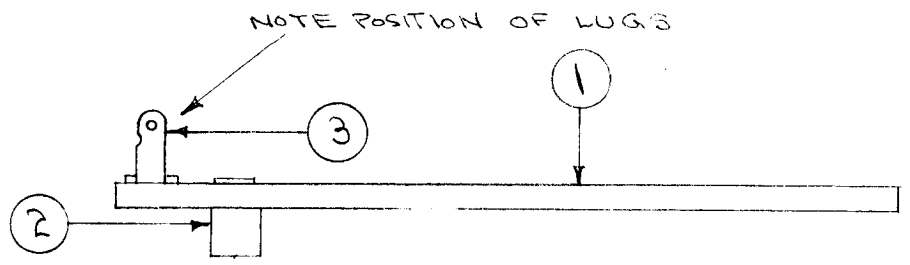
A-980 D

MAXIMUM ALLOWABLE TOLERANCES HAVE BEEN DETERMINED AND DEVIATIONS WILL BE CAUSE FOR REJECTION. REMOVE ALL BURRS AND SHARP EDGES

REQ. PER UNIT	USED ON			
	MODEL	PROJECT NO.	ASS'Y. NO.	DATE
1	GPR		A-1092	6-28-55



A - No. 12 (.189) D. 2 HOLES
 B - No. 29 (.140) D. 20 "



20	3	TE-151	LUG	
2	2	TE-108-1	STANDOFF	
1	1	PX-272	TERM. BD. (NO DRAWING)	
REQ. ITEM	PART NO.		DESCRIPTION	SYMBOL
Y16 THK.			THE TECHNICAL MATERIEL CORP.	
STOCK SIZE			MAMARONECK. NEW YORK	
PHENOLIC			TERMINAL BOARD SUB ASSY.	
MATERIAL			WEIGHT PER PC.	
XXX P LAMINATE			REAR CHASSIS GPR	
TYPE & TEMPER			CDD. 6-28-55 P.L.K. 6-28-55	
HEAT TREAT. SPEC.			DRAWN	
FINISH & SPEC. NO.			ELEC. DES. APP.	
			MECH. DES. APP.	
			CHECKED	
			FINAL APPROVAL	
			A-980 D	

ISSUE	ITEM	CHANGED FROM	DATE	CN. NO.	DRAFTS	CHECKER	ENG. APP.
D	2	1 3/4 WAS 2 1/8			9/14/55	A	WDC
	1	STAMPING REMOVED					
C	3	ITEM 2 WAS TE-108-3			8/11/55	3	WDC
	2	COMPLETE REVISION					
B	1	REDRAWN			6/21/55	2	WDC

TOLERANCES		SCALE
ALL OTHERS	DEC. DIM. ± FRAC. DIM. ± 1/64 ANGULAR DIM. ±	DRILL, PUNCH, COMMERCIAL STOCK SIZES AND MANUFACTURERS TOLERANCES ARE NOT INCLUDED.

IF IT IS FOUND DESIRABLE TO CHANGE ANY TOLERANCE OR OTHER DETAIL SPECIFIED ON THIS DRAWING NOTIFY THE PURCHASER PROMPTLY.

A-989 G

MAXIMUM ALLOWABLE TOLERANCES HAVE BEEN DETERMINED AND DEVIATIONS WILL BE CAUSE FOR REJECTION. REMOVE ALL BURRS AND SHARP EDGES

REQ. PER UNIT	USED ON			
	MODEL	PROJECT NO.	ASS'Y. NO.	DATE
1	GPR	297		A-4-55

WINDING:

- No 1 - 100 TURNS OF ITEM 2 UNIVERSAL WOUND
- No. 2 5 TURNS #30 DSC SINGLE LAYER, CLOSE WOUND.

MACHINE DATA:

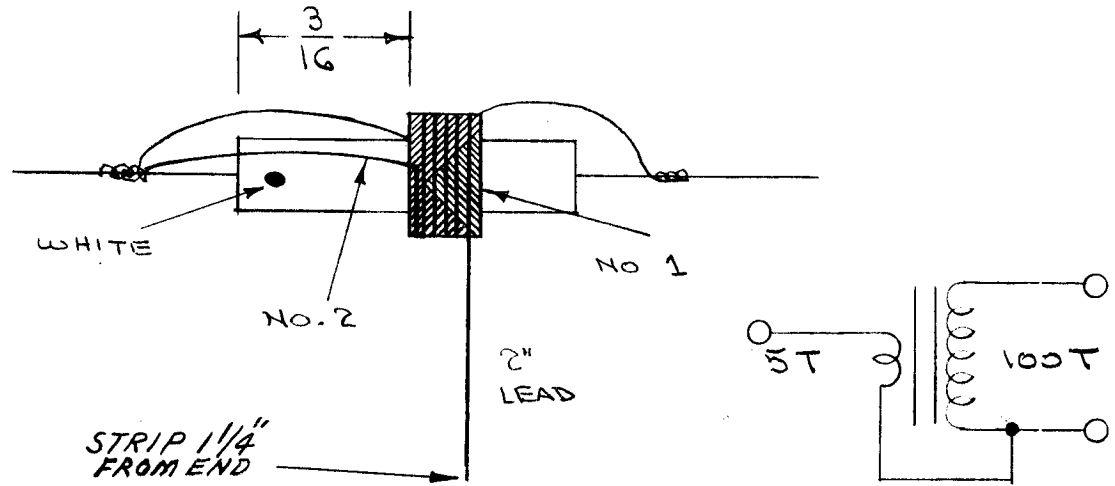
DRIVER GEAR 69
CAM GEAR 105
CAM .250

ELECTRICAL DATA

L - 128 μ h (116 - 140)
Q - > 100
F - 790 Kc.

FABRICATION:

STAKE LEADS WITH ITEM 5.
BAKE DRY AT 215° F. FOR 1/2 HR.
SOLDER LEADS AS SHOWN.
COAT WITH ITEM 4.
BAKE DRY AT 215° F. FOR 1/2 HR.
COLOR CODE AS SHOWN



REQ.	ITEM	PART NO.	DESCRIPTION	SYMBOL
X	6	BS-100	SOLDER, SOFT	
X	5	GL-103	CEMENT	
X	4	GL-102	Q MAX	
X	3	WI-107-11	WIRE, MAGNET #30 DSC	
X	2	WI-104-541-SCRS	WIRE, LITZ	
1	1	CI-114	CORE, POWDERED IRON	

ISSUE	ITEM	CHANGED FROM	DATE	CN. NO.	DRAFTS	CHECKER	ENG. APP.
G		STRIP 1/4" FROM END ADDED	3-6-67	17920	L.P.K.	G.T.O.	
F	2	Color Code Added	7/31/56	6	PLK	P.L.X.	A.I.J.
	1	TOL. Added To "L"					
E	1	WAS T-23	6/4/56	5	PLK	G.T.O.	
D	1	ITEM 1 WAS CF-116	5/15/56	4	PLK	G.T.O.	
C	1	BAKE TEMP. WAS 100°F	10/3/55	3	PLK	G.T.O.	
B	1	POS. OF #2 WINDING CHGD.	7-10-55	2	PLK	G.T.O.	
A	1	Q WAS 150	4-12-55	1	P.B.	G.T.O.	

STOCK SIZE		THE TECHNICAL MATERIEL CORP. MAMARONECK, NEW YORK	
MATERIAL	WEIGHT PER PC.	AUTO TRANSFORMER	
TYPE & TEMPER		2nd CONV. T 11 G.P.R.	
HEAT TREAT. SPEC.		CDD. A-4-55	P.L.K.
FINISH & SPEC. NO.		DRAWN	ELEC. DES. APP.
		MECH. DES. APP.	
		FINAL APPROVAL	
		A-989 G	

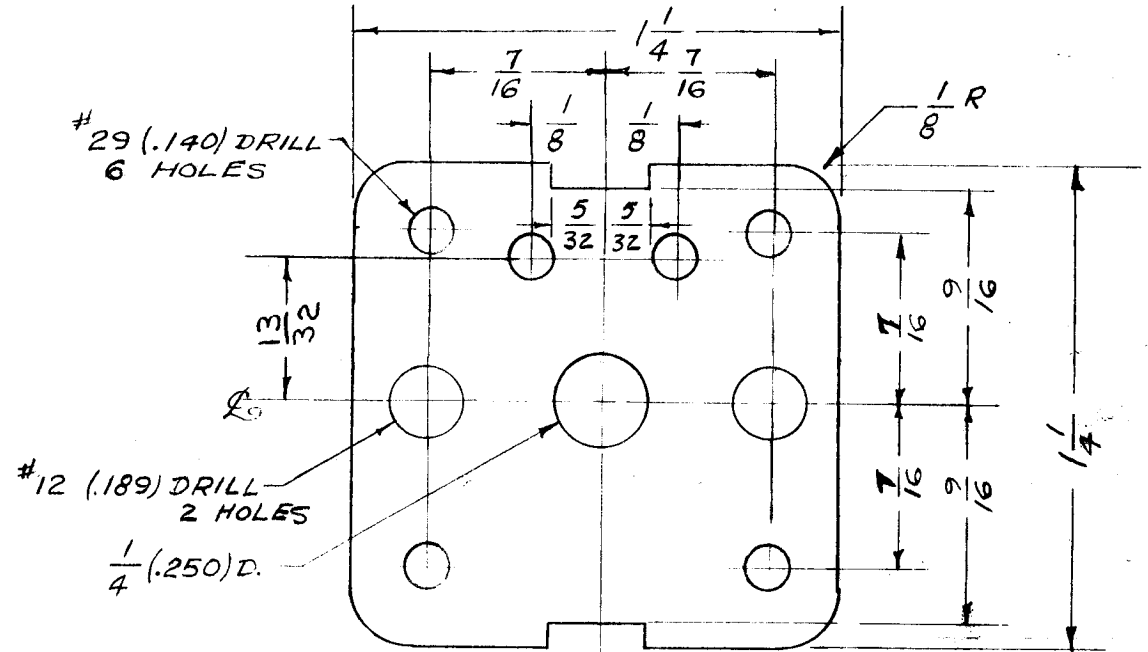
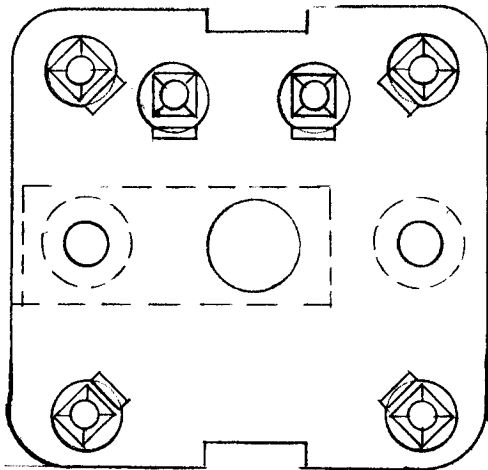
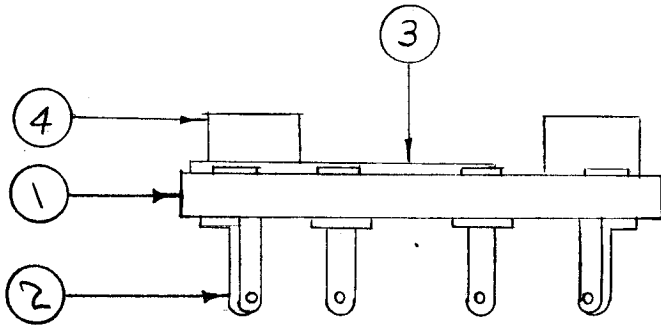
TOLERANCES	SCALE
ALL OTHERS DEC. DIM. ± FRAC. DIM. ± ANGULAR DIM. ±	DRILL, PUNCH, COMMERCIAL STOCK SIZES AND MANUFACTURERS TOLERANCES ARE NOT INCLUDED.

IF IT IS FOUND DESIRABLE TO CHANGE ANY TOLERANCE OR OTHER DETAIL SPECIFIED ON THIS DRAWING NOTIFY THE PURCHASER PROMPTLY.

A-992

MAXIMUM ALLOWABLE TOLERANCES HAVE BEEN DETERMINED AND DEVIATIONS WILL BE CAUSE FOR REJECTION. REMOVE ALL BURRS AND SHARP EDGES

REQ. PER UNIT	USED ON			
	MODEL	PROJECT NO.	ASSY. NO.	DATE
1	GPR	297	A-1040	4-7-55



2	4	TE-108-6	STANDOFF	
1	3	MS-132	GROUNDING STRAP	
6	2	TE-151	LUG	
1	1	PX-271	TERMINAL BOARD (NO DWG)	

REQ. ITEM	PART NO.	DESCRIPTION	SYMBOL
-----------	----------	-------------	--------

$\frac{1}{16}$ THK.	THE TECHNICAL MATERIEL CORP.		
STOCK SIZE	MAMARONECK. NEW YORK		

PHENOLIC	#	TERM. BD. ASSY.	
----------	---	-----------------	--

MATERIAL	WEIGHT PER PC.	2 ND CONV. I.F. GPR.	
----------	----------------	---------------------------------	--

TYPE & TEMPER	XXXP LAMINATE	CDD-4-7-55	HHH	W
---------------	---------------	------------	-----	---

DRAWN	ELEC. DES. APP.	MECH. DES. APP.
FADE	G.T.O	

CHECKED	FINAL APPROVAL	
---------	----------------	--

HEAT TREAT. SPEC.	A-992	
NATURAL	F	

FINISH & SPEC. NO.		
--------------------	--	--

F	1	$\frac{1}{32}$ WAS $\frac{3}{8}$	5/7/56	6	HHH	HHH	W
E	1	ITEMS 3 & 4 ADDED	10/2/55	5	B	HHH	W
D	1	YEL. WAS BLK.	8/2/55	4	CDD	HHH	W
C	1	VIO. & BLK. ADDED	7-20-55	3	CDD	HHH	W
B	1	MACHINING DETAIL ADDED	6/1/55	2	B	HHH	W
A	1	COMPLETE REVISION	5/9/55	1	CDD	HHH	G.T.O
ISSUE	ITEM	CHANGED FROM	DATE	CN. NO.	DRAFTS	CHECKER	ENG. APP.

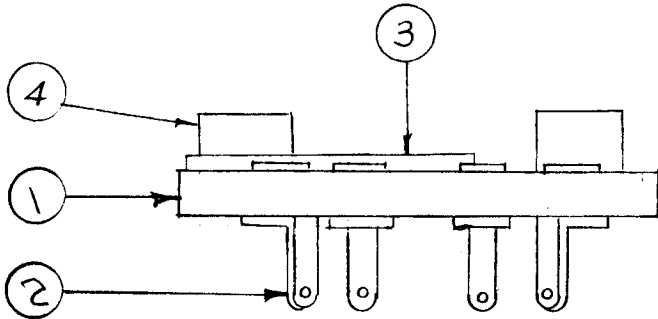
TOLERANCES		SCALE
ALL OTHERS	DEC. DIM. \pm FRAC. DIM. \pm $\frac{1}{64}$ ANGULAR DIM. \pm	DRILL, PUNCH, COMMERCIAL STOCK SIZES AND MANUFACTURERS TOLERANCES ARE NOT INCLUDED.

IF IT IS FOUND DESIRABLE TO CHANGE ANY TOLERANCE OR OTHER DETAIL SPECIFIED ON THIS DRAWING NOTIFY THE PURCHASER PROMPTLY.

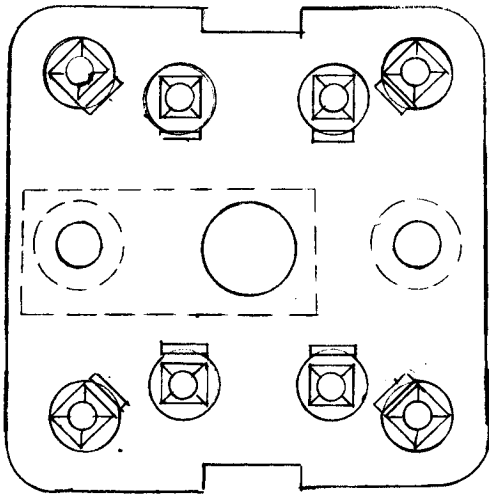
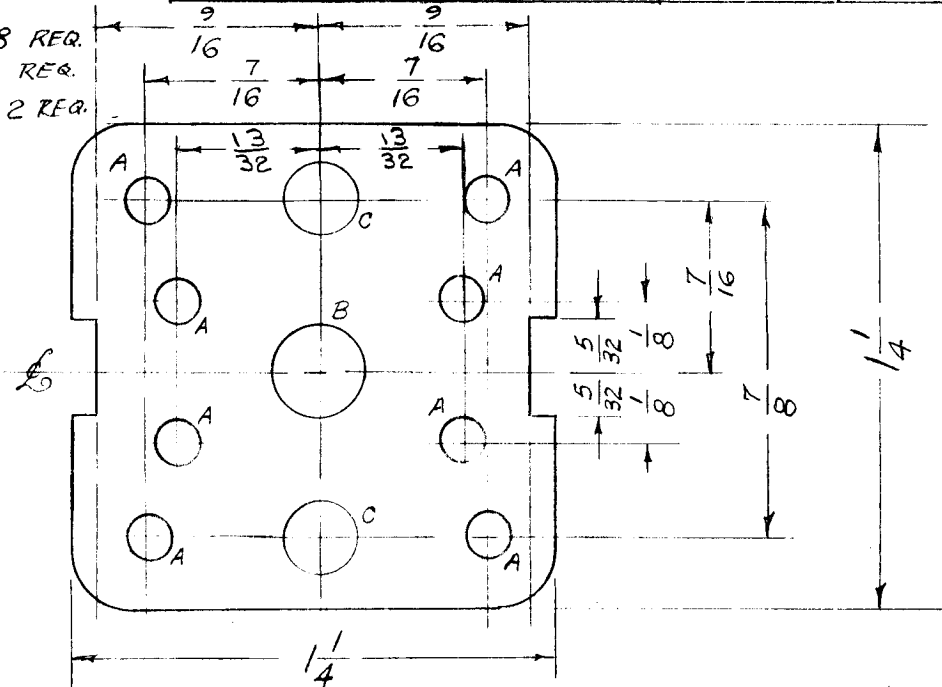
A-996 E

MAXIMUM ALLOWABLE TOLERANCES HAVE BEEN DETERMINED AND DEVIATIONS WILL BE CAUSE FOR REJECTION. REMOVE ALL BURRS AND SHARP EDGES

REQ. PER UNIT	USED ON			
	MODEL	PROJECT NO.	ASS'Y. NO.	DATE
1	GPR(S)(R)	297	A-1038	4-11-55



A- #29(.140) DRILL 8 REQ.
 B- 1/4 (.250) D. 1 REQ.
 C- #12(.189) DRILL 2 REQ.



2	4	TE-108-6	STANDOFF	
1	3	MS-132	GROUNDING STRAP	
8	2	TE-151	LUG	
1	1	PX-269	TERMINAL BOARD (NO DWG)	
REQ.	ITEM	PART NO.	DESCRIPTION	SYMBOL
1/16 THK.			THE TECHNICAL MATERIEL CORP.	
STOCK SIZE			MAMARONECK, NEW YORK	
PHENOLIC			TERM. BD. ASSY., I.F.	
MATERIAL WEIGHT PER PC.			COMPOSITE GPR(S)(R)	
XXXP LAMINATE			GDD A-11-55	
TYPE & TEMPER			###	
HEAT TREAT. SPEC.			DRAWN	
NATURAL			ELEC. DES. APP.	
FINISH & SPEC. NO.			MECH. DES. APP.	
			G.T.O	
			CHECKED	
			FINAL APPROVAL	
			A-996 E	

ISSUE	ITEM	CHANGED FROM	DATE	CN. NO.	DRAFTS	CHECKER	ENG. APP.
E	1	13/32 WAS 3/8	5/8/56	5	JAD	HH	WBC
D	1	ITEM 3 & 4 ADDED	10-12-55	4	JAD	HH	WBC
C	1	MACHINING DETAIL ADDED	4/21/55	3	JAD	HH	WBC
B	1	COMPLETE REVISION	10/9/55	2	JAD	HH	WBC
A	1	COLOR CODE ADDED	5/11/55	1	JAD	HH	WBC

TOLERANCES		SCALE
ALL OTHERS	DEC. DIM. ± FRAC. DIM. ± ANGULAR DIM. ±	DRILL, PUNCH, COMMERCIAL STOCK SIZES AND MANUFACTURERS TOLERANCES ARE NOT INCLUDED.