

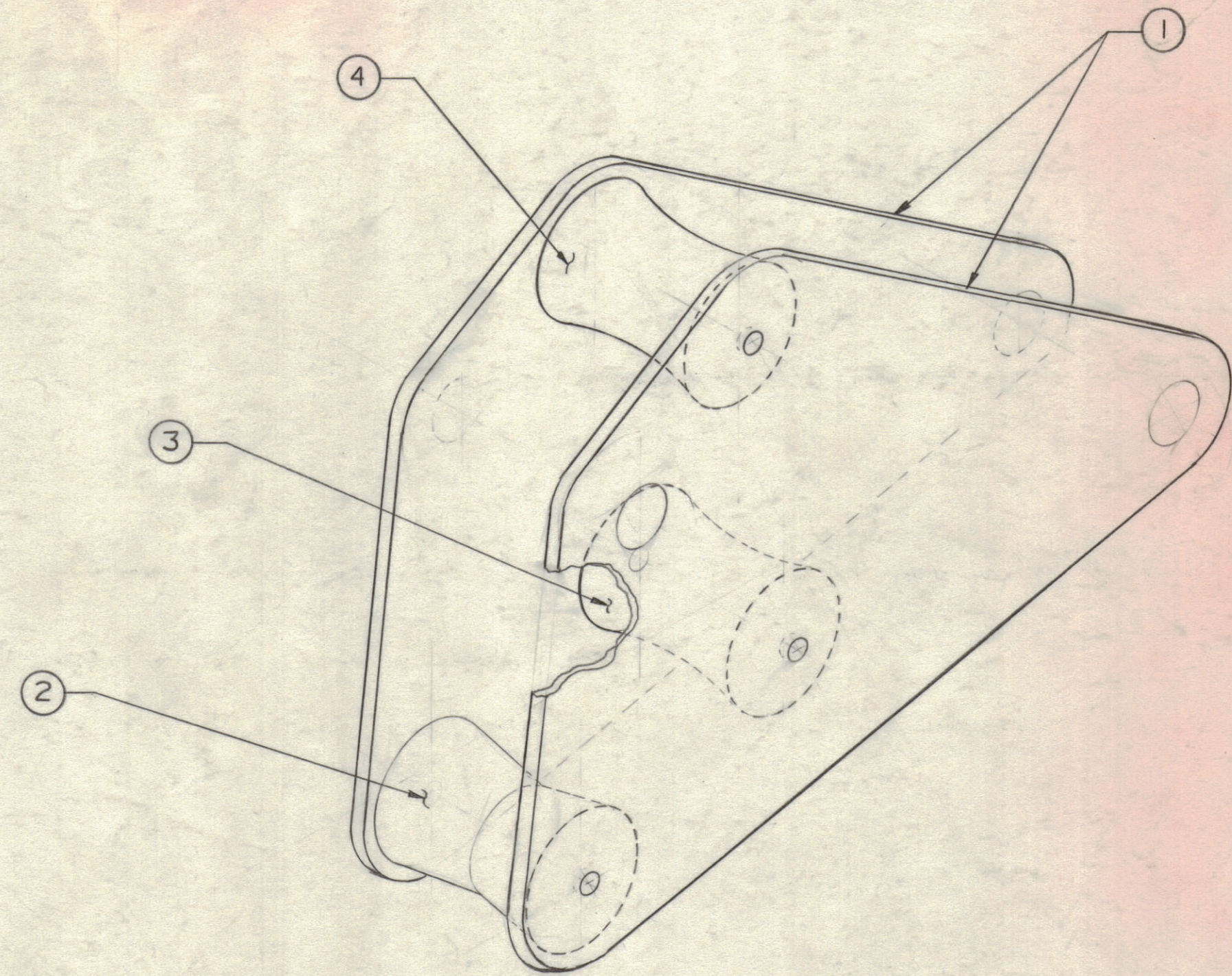
4

3

2

1

REVISIONS						
ZONE	LTR	DESCRIPTION	DATE	E.M.N.NO	DRAFT	CHKD APPD
	Ø	ORIGINAL RELEASE FOR PRODUCTION	8/20/70		RS	



QTY. REQ.	ITEM	PART NO.	DESCRIPTION	SYMBOL
1	4	A8105-2	ANTENNA PYLON PULLEY "B" ASSY.	
1	3	A8105-1	ANTENNA PYLON PULLEY "B" ASSY.	
1	2	A8104	ANTENNA PYLON PULLEY "A" ASSY.	
2	1	MS8435	ANTENNA PYLON PULLEY RETAINER	

LIST OF MATERIAL

UNLESS OTHERWISE SPECIFIED DIMENSIONS ARE IN INCHES AND INCLUDE CHEMICALLY APPLIED OR PLATED FINISHES

FINAL APPROVAL	DATE
MECH. DES.	DATE
ELECT. DES.	DATE
CHECKED	DATE
DRAWN C. GROB	DATE 11/8/68

THE TECHNICAL MATERIEL CORP.  
MAMARONECK, NEW YORK

PULLEY PYLON ASSY.

UNIT 4		
QTY / UNIT	MODEL USED ON	ASS'Y NO.
APPLICATION		
CODE		

TOLERANCES ON  
 DECIMALS .X ± .05  
 .XX ± .01  
 .XXX ± .005  
 FRACTIONS ± 1/64  
 ANGLES ± 0° -30'

MATERIAL	SEE LIST OF MATERIAL	SIZE	CODE IDENT. NO.	DWG NO.	ISSUE
FINISH		C	82679	A8106	Ø

NOTICE TO PERSONS RECEIVING THIS DRAWING  
 THE TECHNICAL MATERIEL CORPORATION claims proprietary right in the material disclosed hereon. This drawing is issued in confidence for engineering information only and may not be reproduced or used to manufacture anything shown hereon without permission from THE TECHNICAL MATERIEL CORPORATION to the user. This drawing is loaned for mutual assistance and is subject to recall at any time.

4

3

2

1