

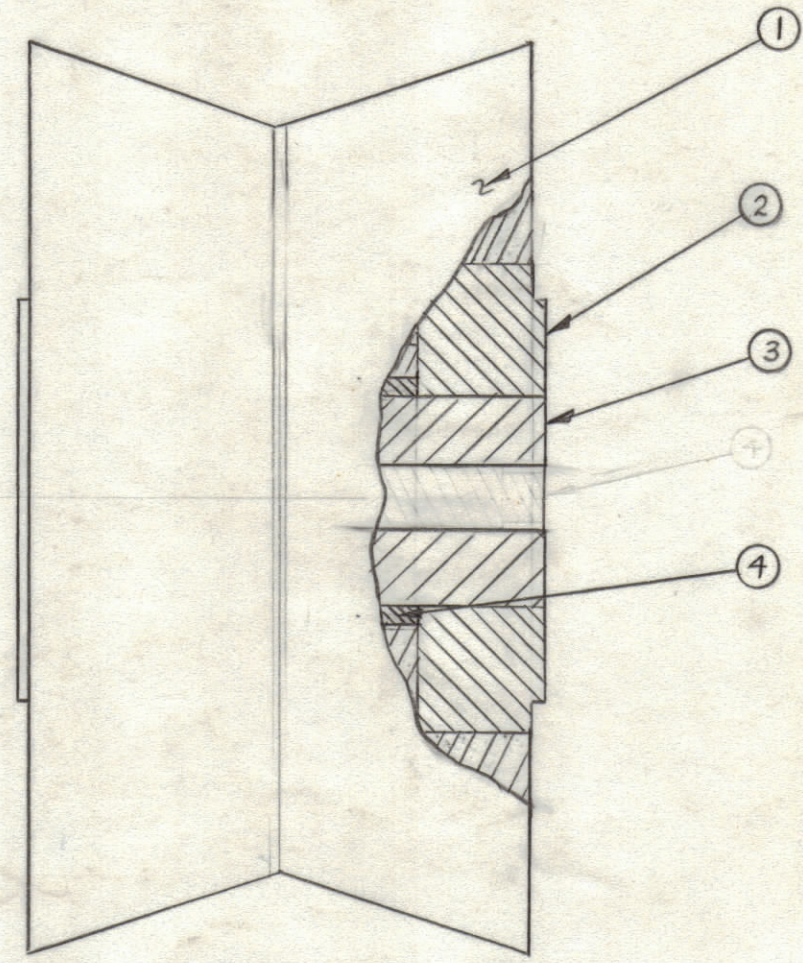
4

3

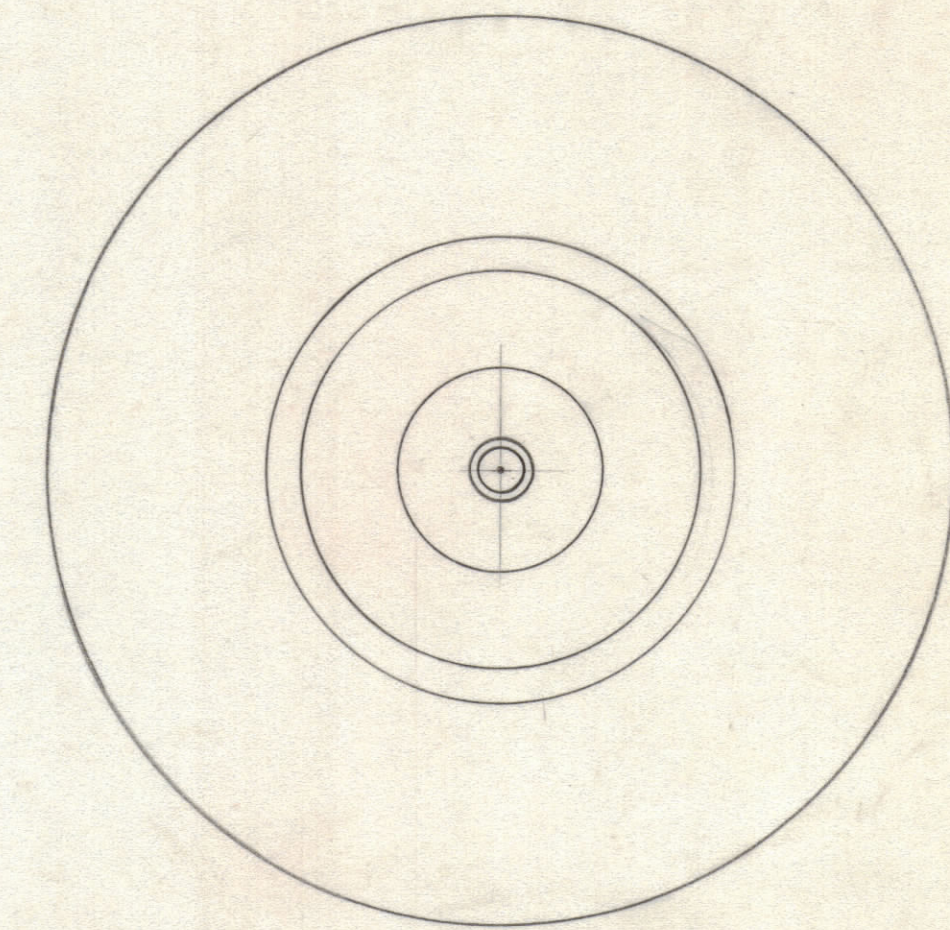
2

1

| REVISIONS | | | | | | |
|-----------|-----|---------------------------------|----------|----------|-------|-----------|
| ZONE | LTR | DESCRIPTION | DATE | E.M.N.NO | DRAFT | CHKD APPD |
| | Ø | ORIGINAL RELEASE FOR PRODUCTION | 10/15/69 | | RG. | |



FRONT VIEW



SIDE VIEW

NOTE:
 1. 2 EACH REQ. PER ASSY.
 2.

MATERIAL
 4340 STEEL MIL-S-5000
 HEAT TREAT TO 280,000 PSI
 CADMIUM PLATE

| QTY. REQ. | ITEM | PART NO. | DESCRIPTION | SYMBOL |
|-----------|------|----------|--------------------------|--------|
| 1 | 4 | | GREASE VOID | |
| 1 | 3 | MSB431 | PULLEY SPACER | |
| 2 | 2 | BB-130-0 | BEARING, RACE | |
| 1 | 1 | MSB433 | ANTENNA PYLON PULLEY "A" | |

LIST OF MATERIAL

| | | |
|-------------|---------------|-----------|
| 1 | UNIT 4 | |
| QTY / UNIT | MODEL USED ON | ASS'Y NO. |
| APPLICATION | | |
| | CODE | |

NOTICE TO PERSONS RECEIVING THIS DRAWING
 THE TECHNICAL MATERIEL CORPORATION claims proprietary right in the material disclosed hereon. This drawing is issued in confidence for engineering information only and may not be reproduced or used to manufacture anything shown hereon without permission from THE TECHNICAL MATERIEL CORPORATION to the user. This drawing is loaned for mutual assistance and is subject to recall at any time.

UNLESS OTHERWISE SPECIFIED DIMENSIONS ARE IN INCHES AND INCLUDE CHEMICALLY APPLIED OR PLATED FINISHES

TOLERANCES ON
 DECIMALS .X ± .05
 .XX ± .01
 .XXX ± .005
 FRACTIONS ± 1/64
 ANGLES ± 0° -30'

MATERIAL SEE NOTE
 FINISH SEE NOTE

FINAL APPROVAL *[Signature]* DATE 10/15/69
 MECH. DES. DATE
 ELECT. DES. DATE
 CHECKED DATE
 DRAWN C. Grob DATE 11/5/68

THE TECHNICAL MATERIEL CORP.
 MAMARONECK, NEW YORK

ANTENNA PYLON PULLEY
 "A" ASSY

| | | | |
|------|----------------|---------|-------|
| SIZE | CODE IDENT.NO. | DWG NO. | ISSUE |
| C | 82679 | A8104 | Ø |

SCALE SHEET 1 OF 1

4

3

2

1