

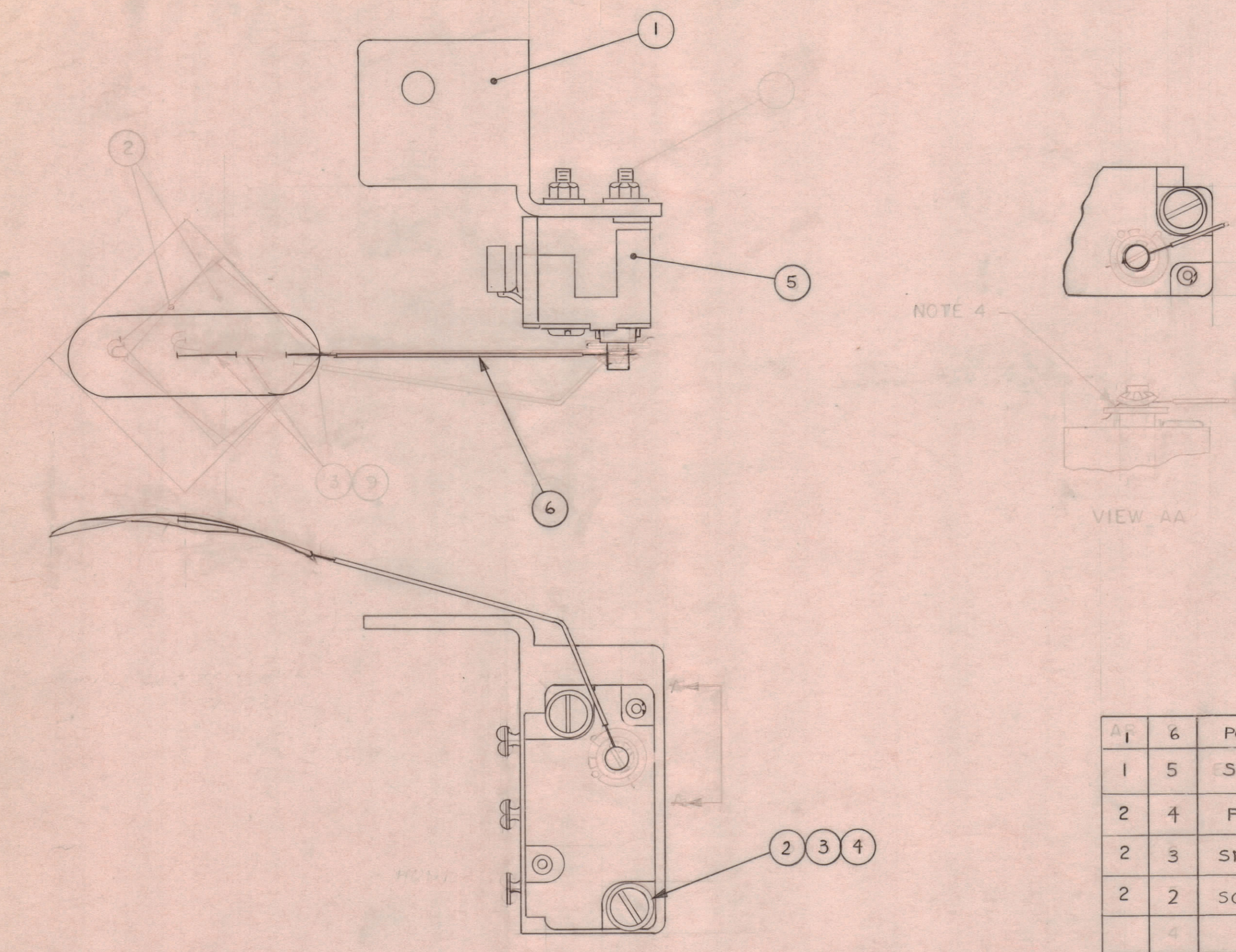
4

3

2

1

REVISIONS						
ZONE	LTR	DESCRIPTION	DATE	E.M.N.NO	DRAFT	CHKD APPD
	X	DWG No WAS 40N12C7223	8-15-68		CB	
	Ø	ORIGINAL RELEASE FOR PRODUCTION	8/25/69		CB	



NOTE 4

VIEW AA

NOTES:

- VENDOR; CHEERY ELECTRIC PRODUCTS CORP. HIGHLAND PARK, ILLINOIS.
- ELASTIC STOP NUT CORP. UNION, NEW JERSEY.
- U.S. PLYWOOD CORPORATION, 2305 SUPERIOR AVENUE, KALAMAZOO.
- INSERT ITEM 3 INTO HOLE AS SHOWN BEND DOWN THRU SLOT.

QTY.	ITEM	PART NO.	DESCRIPTION	SYMBOL
1	6	PO168-2	PADDLE, AIR PARENT	
1	5	SW253	AIR SWITCH	NOTE 1
2	4	FW06HBN	WASHER, FLAT NO. 6	
2	3	SM1275440	NUT, SELF-LOCKING 4-40 UNC-3A	NOTE 2
2	2	SCBPO440BN14	SCREW PAN HD 4-40 UNC-3B X 7/8 LG	
	4		SLEEVING, TEFLON .031 ID X 1-1/2 LG	
	3		LEVER ARM	
	2		VANE	
1	1	MS8275	BRACKET	

LIST OF MATERIAL

1	SPT-3KVHF	AX8038
QTY / UNIT	MODEL USED ON	ASS'Y NO.
APPLICATION CK8110		
	CODE	
<p>NOTICE TO PERSONS RECEIVING THIS DRAWING</p> <p>THE TECHNICAL MATERIEL CORPORATION claims proprietary right in the material disclosed hereon. This drawing is issued in confidence for engineering information only and may not be reproduced or used to manufacture anything shown hereon without permission from THE TECHNICAL MATERIEL CORPORATION to the user. This drawing is loaned for mutual assistance and is subject to recall at any time.</p>		

UNLESS OTHERWISE SPECIFIED DIMENSIONS ARE IN INCHES AND INCLUDE CHEMICALLY APPLIED OR PLATED FINISHES		FINAL APPROVAL J.F.P. [Signature]	DATE 7-15-68
TOLERANCES ON		MECH. DES. P.T.	DATE 5-21-68
DECIMALS	FRACTIONS	ELECT. DES.	DATE 8-13-69
.X ± .05	± 1/64	CHECKED J.F.P.	DATE 7-15-68
.XX ± .01	ANGLES	DRAWN L.M.C.D.	DATE 5-21-68
.XXX ± .005	± 0° -30'		
MATERIAL			
FINISH			

THE TECHNICAL MATERIEL CORP. MAMARONECK, NEW YORK			
AIR-INTERLOCK ASSEMBLY VIDEO MODULATOR			
SIZE	CODE IDENT.NO.	DWG NO.	ISSUE
C	82679	4A8099	Ø
SCALE	2:1		SHEET 1 OF 1

4

3

2

1