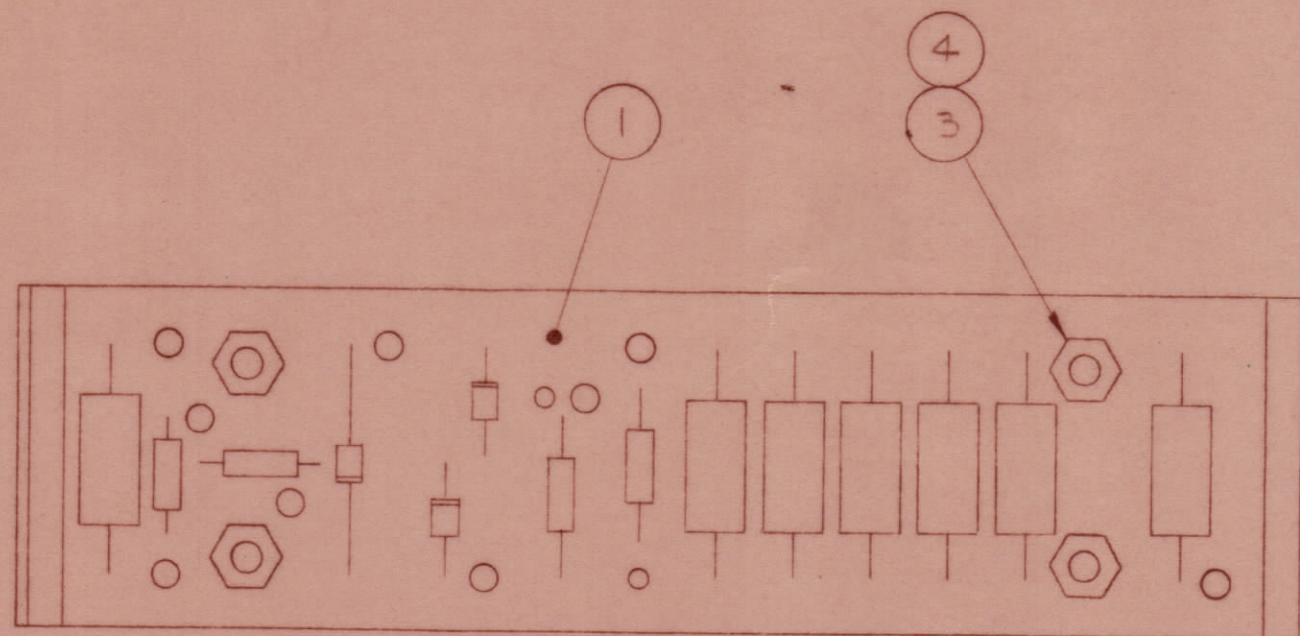
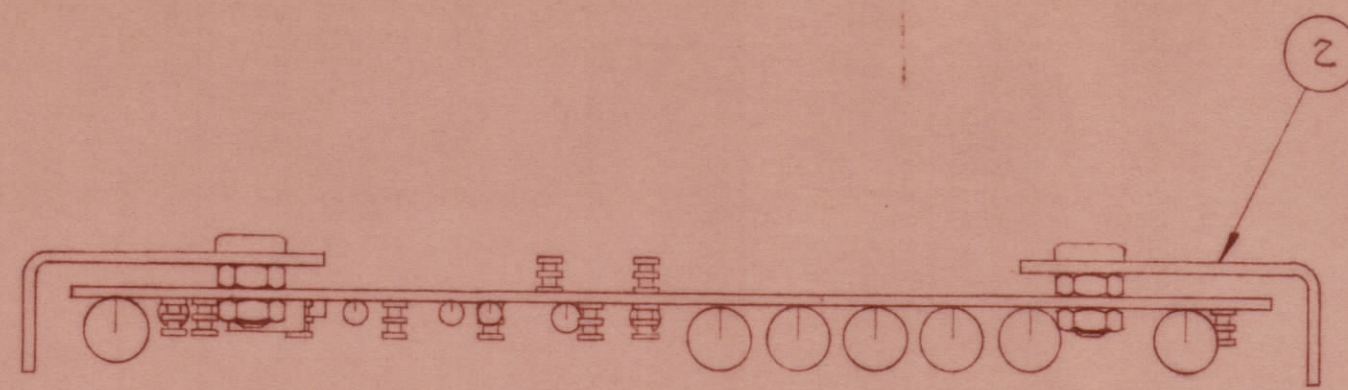


REVISIONS						
ZONE	LTR	DESCRIPTION	DATE	E.M.N.NO	DRAFT	CHKD APPD
	X	DWG No WAS 40N12C7217	8-15-68		C. G. ROSS	
		FOR FINAL RELEASE FOR PRODUCTION	11/1/69		L.S.	



QTY. REQ.	ITEM	PART NO.	DESCRIPTION	SYMBOL
8	4	NTH0632BN8	NUT, HEX	
4	3	SCBP0632BN8	SCREW,	
2	2	MS8389	BRACKET, MTG	
1	1	A8081	DRIVER PC. BD. ASSY.	

LIST OF MATERIAL

UNLESS OTHERWISE SPECIFIED DIMENSIONS ARE IN INCHES AND INCLUDE CHEMICALLY APPLIED OR PLATED FINISHES

TOLERANCES ON	
DECIMALS	FRACTIONS
.X ± .05	± 1/64
.XX ± .01	ANGLES
.XXX ± .005	± 0°-30'

FINAL APPROVAL JFP	DATE 7-15-68
MECH. DES. P.T.	DATE 5-15-68
ELECT. DES.	DATE
CHECKED JFP	DATE 7-15-68
DRAWN WM L MCKINLEY	DATE 15 MAY 68

THE TECHNICAL MATERIEL CORP.
MAMARONECK, NEW YORK

DRIVER ASSEMBLY

1	SPT-3KVHF	AX8038
QTY / UNIT	MODEL USED ON	ASS'Y NO.
APPLICATION A8066		
	CODE	

NOTICE TO PERSONS RECEIVING THIS DRAWING
THE TECHNICAL MATERIEL CORPORATION claims proprietary right in the material disclosed hereon. This drawing is issued in confidence for engineering information only and may not be reproduced or used to manufacture anything shown hereon without permission from THE TECHNICAL MATERIEL CORPORATION to the user. This drawing is loaned for mutual assistance and is subject to recall at any time.

MATERIAL
FINISH

SIZE	CODE IDENT. NO.	DWG NO.	ISSUE
C	82679	A8098	1

SCALE 1/1

SHEET 1 OF 1