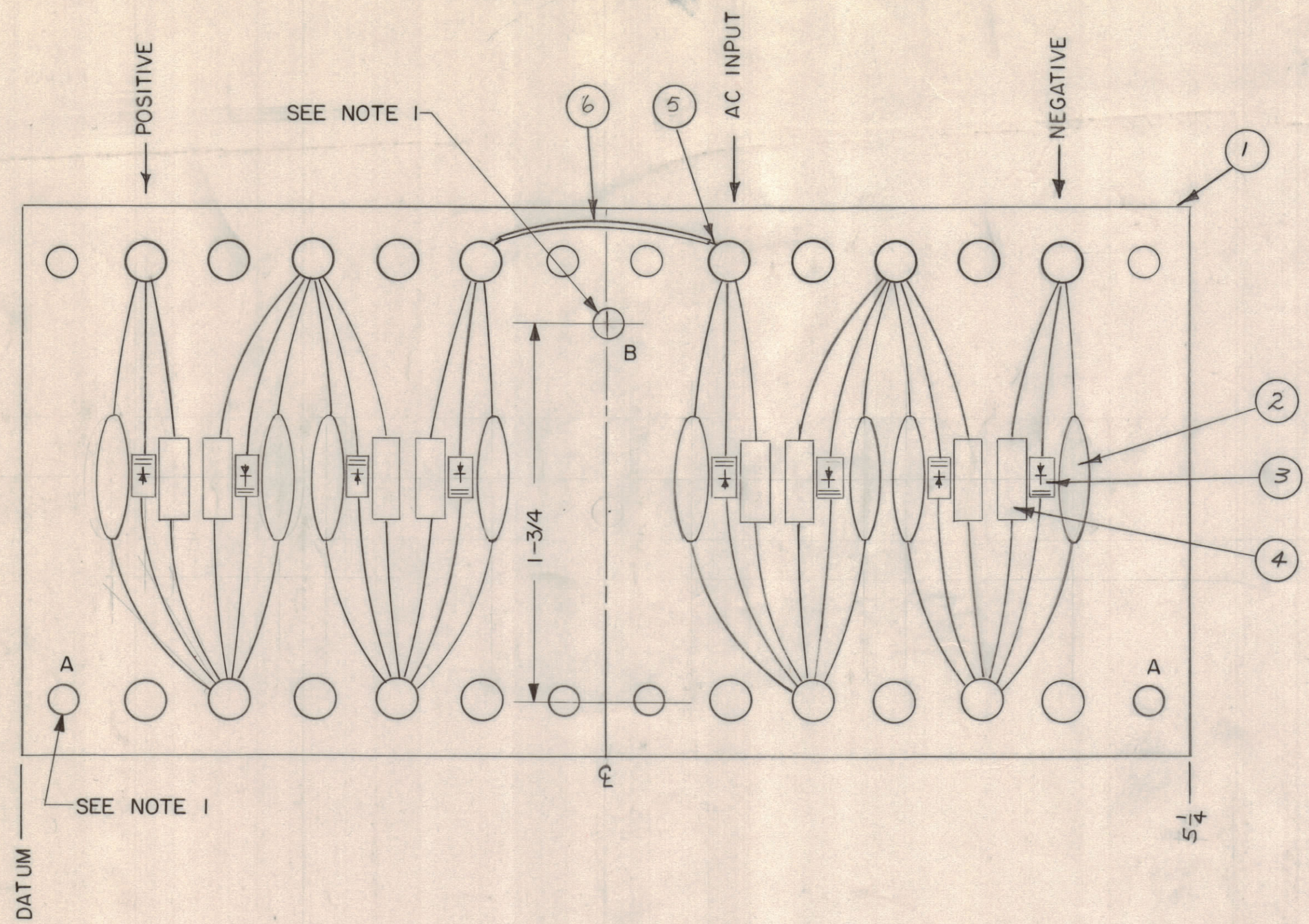


REVISIONS							
ZONE	LTR	DESCRIPTION	DATE	E.M.N.NO	DRAFT	CHKD	APPD
	X	DWG. No. WAS 40N12C7106	8-22-68		CG		
	Ø	ORIGINAL RELEASE FOR PRODUCTION	8/25/68	Ø	CG		JG



NOTE 1: ADD "B" HOLE, 5/32 DIA. (1 HOLE)
 OPEN "A" HOLES TO 5/32 DIA. (2 HOLES)
 1. THE DIMENSIONS OF THIS DRAWING ARE IN INCHES.
 2. ONE USECO 1100C WILL MAKE TWO ASSEMBLIES AS SHOWN.

QTY. REQ.	ITEM	PART NO.	DESCRIPTION	SYMBOL
AR	6		22 TEFLON TUBING	
AR	5		22 AWG TINNED BUSS-WIRE	
8	4	RC20GF105J	RESISTOR CARBON 1 MEG 1/2W 5%	
8	3	1N4007	DIODE 1N4007	
8	2	CC100-14	CAPACITOR .0047µF, 1500 WVDC	
1	1	40A8076-1	TERMINAL BOARD 5-1/4 X 2-1/2 CUT FROM USECO 1100C 2-1/2 X 13-1/8	

LIST OF MATERIAL			
UNLESS OTHERWISE SPECIFIED DIMENSIONS ARE IN INCHES AND INCLUDE CHEMICALLY APPLIED OR PLATED FINISHES		FINAL APPROVAL <i>J.F.P.</i>	DATE 5-1-68
TOLERANCES ON		MECH. DES. <i>J.F.P.</i>	DATE 4-18-68
DECIMALS		ELECT. DES. <i>J.F.P.</i>	DATE 8-13-69
.X ± .05		CHECKED <i>R. Smith</i>	DATE 4-30-68
.XX ± .01		DRAWN <i>L. McDowell</i>	DATE 4-18-68
.XXX ± .005			
MATERIAL SEE ITEM 1 DESCRIPTION		THE TECHNICAL MATERIEL CORP. MAMARONECK, NEW YORK	
FINISH		ASSEMBLY RECTIFIER BRIDGE COMPONENT BOARD	
		SCREEN SUPPLY	
SIZE	CODE IDENT. NO.	DWG. NO.	ISSUE
C	82679	40N1A8076	Ø
SCALE	SHEET		OF
2-1	1		1

3	REC SPT-3KVHMBLY	4 API 140
QTY / UNIT	MODEL USED ON	ASS'Y NO.
	APPLICATION A8072	
	CODE	
NOTICE TO PERSONS RECEIVING THIS DRAWING		
THE TECHNICAL MATERIEL CORPORATION claims proprietary right in the material disclosed hereon. This drawing is issued in confidence for engineering information only and may not be reproduced or used to manufacture anything shown hereon without permission from THE TECHNICAL MATERIEL CORPORATION to the user. This drawing is loaned for mutual assistance and is subject to recall at any time.		