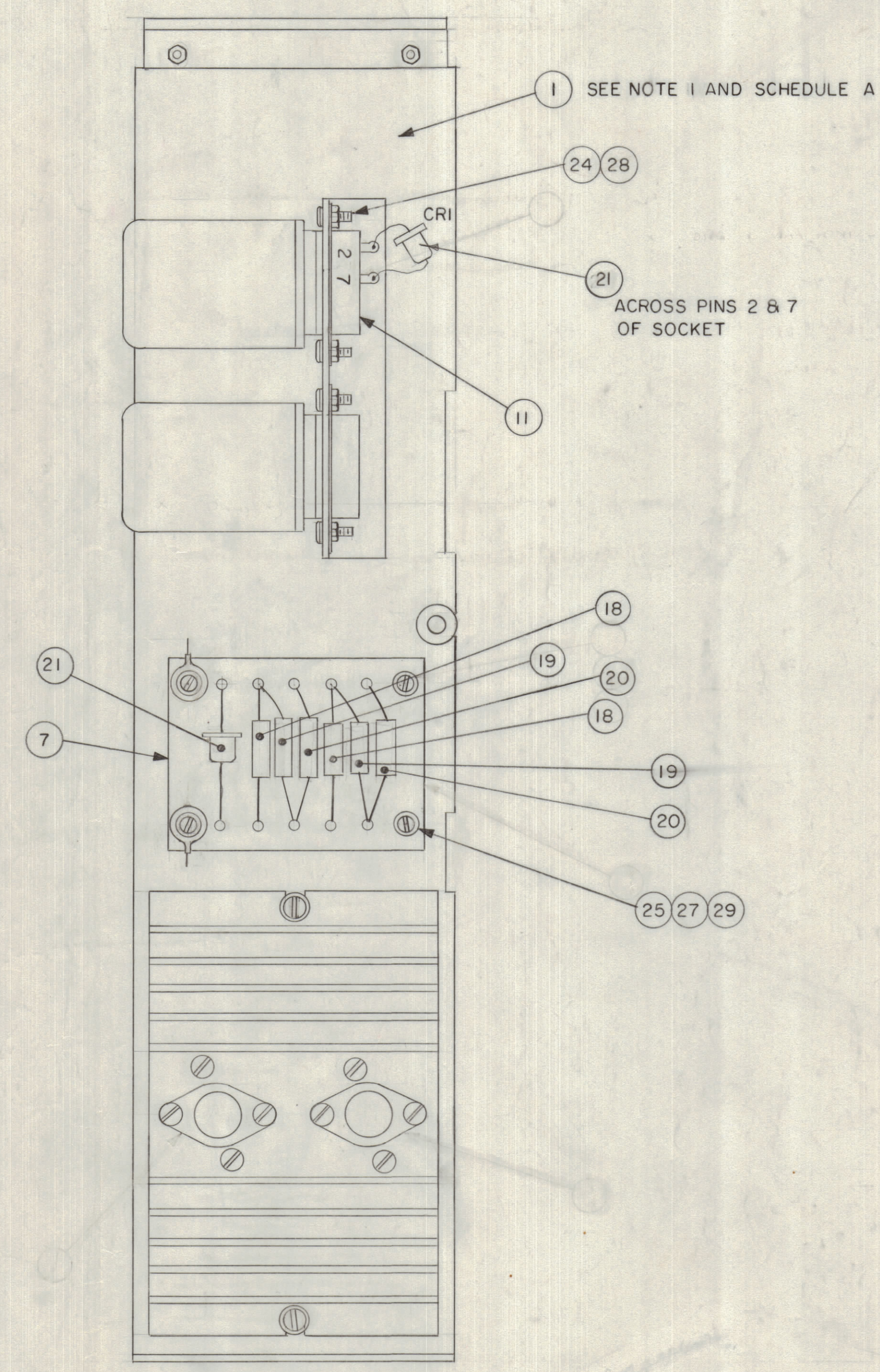
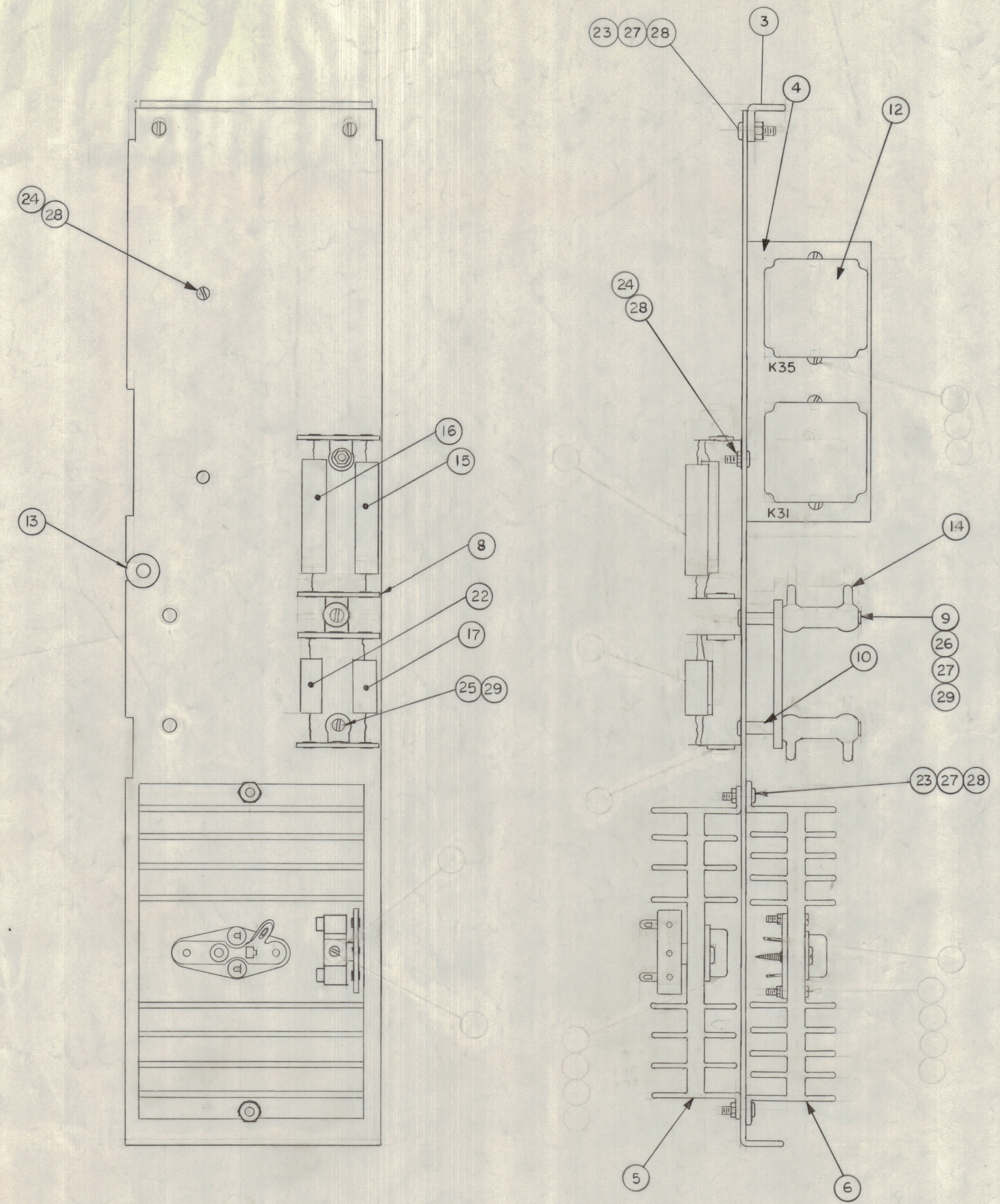


REVISIONS						
ZONE	LTR	DESCRIPTION	DATE	E.M.N.NO	DRAFT	CHKD APPD
C2	A	NOTE 2 DELETED	6-5-68	—	REB	REB JFF
	X	DWG. No. WAS 40N12D7189	8-21-68		C. GARDNER	
	D	ORIG. RELEASE FOR PRODUCTION				

SCHEDULE A

PARTITION ASSY NO.	ITEM-1 PART NO.	QTY PER ASSY
4 A8061-1	4 MS8353-1	1
4 A8061-2	4 MS8353-2	1

- NOTE:
- 4 A8061-1 TO PARTITION ASSY SHOWN
4 A8061-2 IS MIRROR IMAGE.
 - ATTN: TO REMOVE SECTION TO TERMINAL 31 OF THE M500 NO. 100 C. TERMINAL BOARD, THE FOUR MOUNTING HOLES MUST BE DRILLED TO 3/32 DIA. PRIOR TO ASSEMBLY.
 - SEE PL A8061134 FOR PARTS LIST. QUANTITIES ON PARTS LIST ARE FOR ONE - 30 OR-31 ASSY.



QTY. REQ.	ITEM	PART NO.	DESCRIPTION	SYMBOL
LIST OF MATERIAL				
-2	1	AX8067-2		
-1	1	AX8067-2		
-2	1	AX8067-1		
-1	1 EACH	AX8067-1		
UNLESS OTHERWISE SPECIFIED DIMENSIONS ARE IN INCHES AND INCLUDE CHEMICALLY APPLIED OR PLATED FINISHES TOLERANCES ON DECIMALS .X ± .05 .XX ± .01 .XXX ± .005 FRACTIONS ± 1/64 ANGLES ± 0°-30'				
QTY / UNIT MODEL USED ON ASSY NO. APPLICATION A8053 CODE				
MATERIAL FINISH				
FINAL APPROVAL MECH. DES. ELECT. DES. CHECKED DRAWN			DATE DATE DATE DATE	
THE TECHNICAL MATERIEL CORP. MAMARONECK, NEW YORK			ASSEMBLY, PARTITION BIAS CONTROL & AM MODULATOR	
SIZE CODE IDENT. NO. DWG NO.			ISSUE	
D 82679 4A8061A			1	
SCALE SHEET OF				

NOTICE TO PERSONS RECEIVING THIS DRAWING
 THE TECHNICAL MATERIEL CORPORATION claims proprietary right in the material disclosed hereon. This drawing is issued in confidence for engineering information only and may not be reproduced or used to manufacture anything shown hereon without permission from THE TECHNICAL MATERIEL CORPORATION to the user. This drawing is loaned for mutual assistance and is subject to recall at any time.