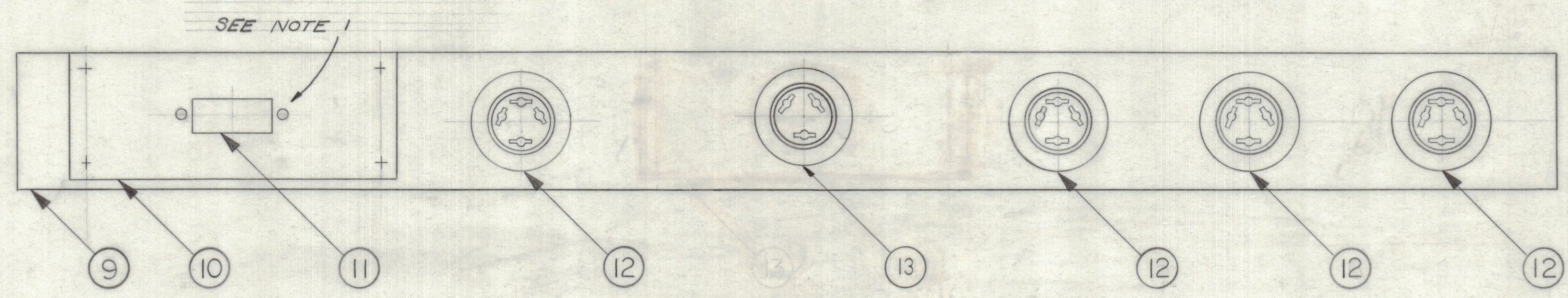
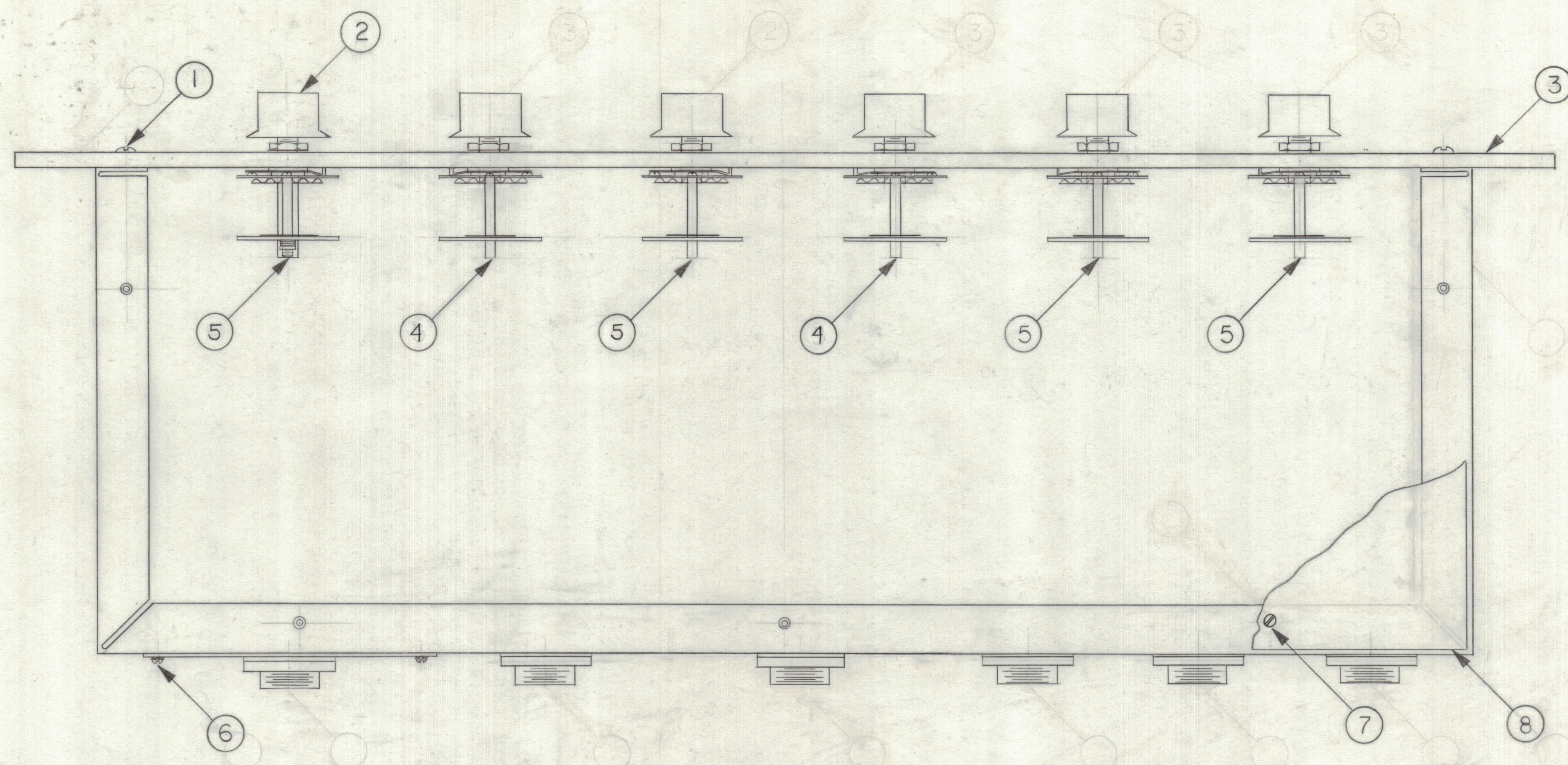


ZONE		LTR		DESCRIPTION		REVISIONS			
DATE	E.M.N.	NO	DRAFT	CHKD	APPD				



SEE NOTE 1

NOTE:  
 1. MOUNT CONN. TO ADAPTER  
 PLATES WITH HARDWARE  
 SUPPLIED WITH CONN.  
 MALE GUIDE PIN TO A OR #1

QTY. REQ.	ITEM	PART NO.	DESCRIPTION	SYMBOL
1	13	JJ133-3	PLUG	
4	12	JJ133-4	PLUG	
1	11	JJ333-9-S-F52	9 PIN CONN	
1	10	LD8045	ADAPTER PLATE	
1	9	LD8049	WRAPAROUND	
2	8	MS8144	COVER TOP & BOTTOM	
10	7		SCREWS	
4	6		SCREWS	
4	5	SW8002	SWITCH	
2	4		SWITCH	
1	3	LD8027	PANEL	
6	2	MP 1273 FP	KNOB	
4	1		SCREWS	

LIST OF MATERIAL

UNLESS OTHERWISE SPECIFIED DIMENSIONS ARE IN INCHES AND INCLUDE CHEMICALLY APPLIED OR PLATED FINISHES	FINAL APPROVAL <i>SFM</i>	DATE 4-30-68
TOLERANCES ON	MECH. DES. <i>J. Frank</i>	DATE 2-12-68
DECIMALS .X ± .05 .XX ± .01 .XXX ± .005	ELECT. DES. <i>CB</i>	DATE 2-20-68
FRACTIONS ± 1/64 ANGLES ± 0° 30'	CHECKED <i>S. Bishop</i>	DATE 2-16-68
MATERIAL		
FINISH		

THE TECHNICAL MATERIEL CORP.  
 MAMARONECK, NEW YORK

ASSY AX8010 SELECTOR  
 UNIT 19

SIZE CODE IDENT. NO. DWG NO. ISSUE  
 D 82679 A8034

SCALE SHEET OF

1	19	
QTY / UNIT	MODEL USED ON	ASS'Y NO.
APPLICATION		
CODE		
NOTICE TO PERSONS RECEIVING THIS DRAWING		
THE TECHNICAL MATERIEL CORPORATION claims proprietary right in the material disclosed herein. This drawing is issued in confidence for engineering information only and may not be reproduced or used to manufacture anything shown hereon without permission from THE TECHNICAL MATERIEL CORPORATION to the user. This drawing is loaned for mutual assistance and is subject to recall at any time.		

A8034