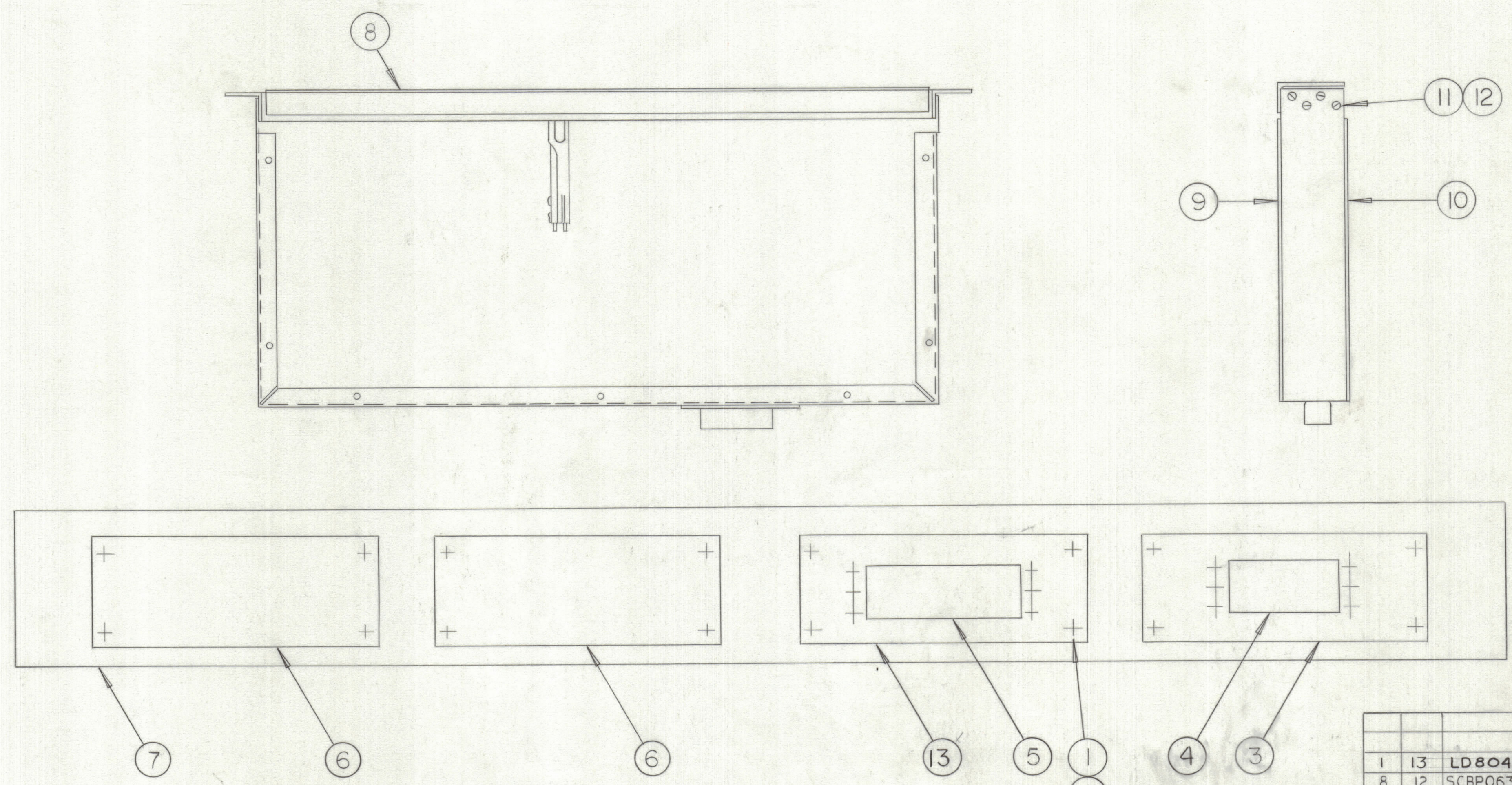


8 7 6 5 4 3 2 1

REVISIONS						
ZONE	LTR	DESCRIPTION	DATE	E.M.N.NO	DRAFT	CHKD APPD



QTY. REQ.	ITEM	PART NO.	DESCRIPTION	SYMBOL
1	13	LD8044-1	ADAPTER PLATE (MS8079-6)	
8	12	SCBP0632 BN5	FLAT HD MACH SCREW	
8	11	LWE06MRN	EXT LOCKWASHER	
1	10	MS8005 1	TOP COVER	
1	9	A8021	BOTTOM COVER ASSY	
1	8	A8025	JACK FIELD (PJ030)	
1	7	MS8004	WRAPAROUND	
2	6	MS8079-1	ADAPTER PLATE BLANK	
1	5	JJ333-50-S-FS-2	50 PIN FEMALE CONN & INNER SHD	
1	4	JJ333-34-S-FS-2	34 PIN FEMALE CONN & INNER SHD	
1	3	LD8044-2	ADAPTER PLATE (MS8079-4)	
16	2	SCBP 0440 BN5	MACH SCREW	
16	1	SMI27D0440	STOP NUT	

LIST OF MATERIAL				
QTY. REQ.	ITEM	PART NO.	DESCRIPTION	SYMBOL

FINAL APPROVAL	DATE
<i>[Signature]</i>	3-20-68
MECH. DES.	DATE
<i>[Signature]</i>	2-7-68
ELECT. DES.	DATE
CHECKED	DATE
<i>[Signature]</i>	2-15-68
DRAWN	DATE
<i>[Signature]</i>	2-9-68

UNLESS OTHERWISE SPECIFIED DIMENSIONS ARE IN INCHES AND INCLUDE CHEMICALLY APPLIED OR PLATED FINISHES	
TOLERANCES ON	
DECIMALS	FRACTIONS
.X ± .05	± 1/64
.XX ± .01	ANGLES
.XXX ± .005	± 0° -30'

QTY / UNIT	MODEL USED ON	ASS'Y NO.
APPLICATION		
CODE		
MATERIAL		
FINISH		

NOTICE TO PERSONS RECEIVING THIS DRAWING  
 THE TECHNICAL MATERIEL CORPORATION claims proprietary right in the material disclosed hereon. This drawing is issued in confidence for engineering information only and may not be reproduced or used to manufacture anything shown hereon without permission from THE TECHNICAL MATERIEL CORPORATION to the user. This drawing is loaned for mutual assistance and is subject to recall at any time.

SIZE	CODE IDENT. NO.	DWG NO.	ISSUE
D	82679	A8031	

SCALE SHEET 1 OF 2

8 7 6 5 4 3 2 1