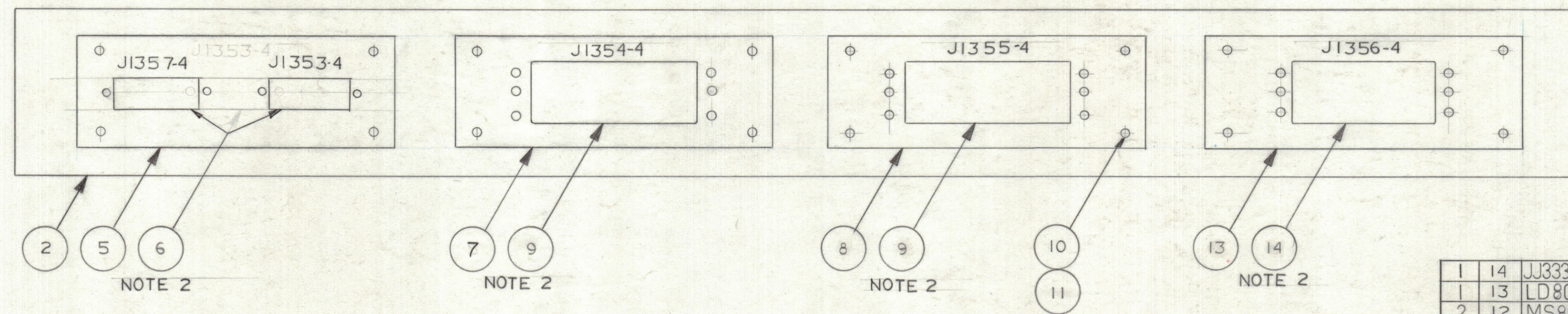
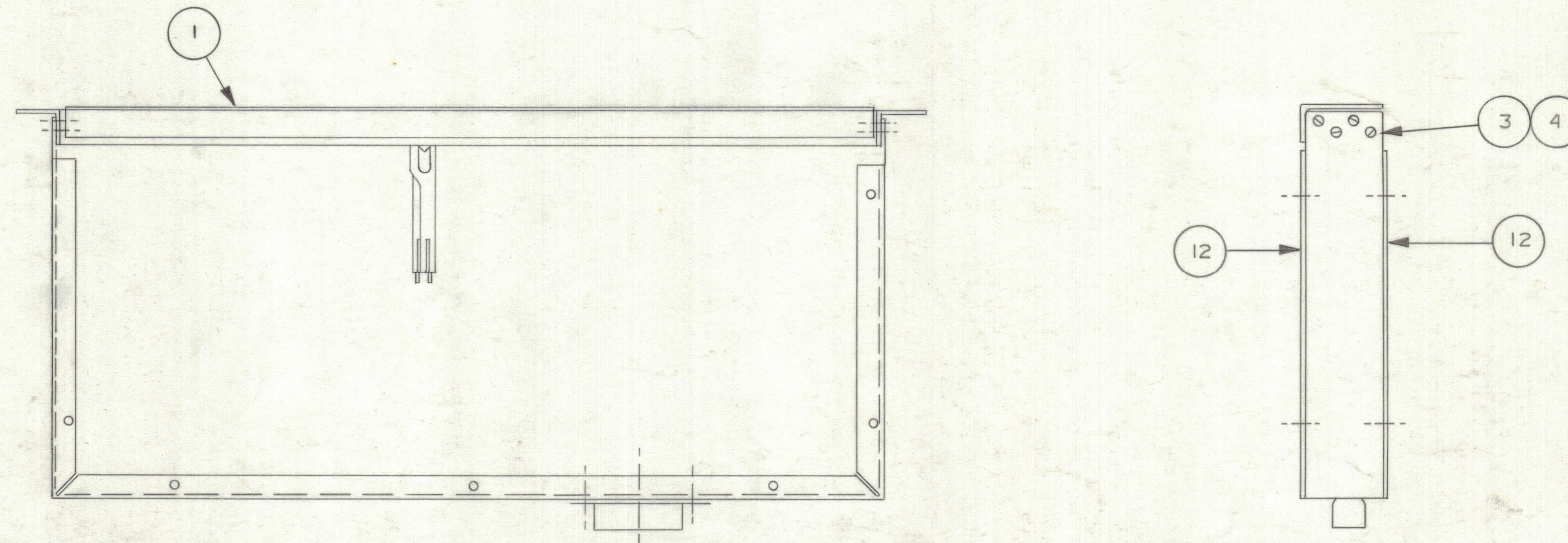


ZONE		LTR		REVISIONS				DATE	E.M.N.NO	DRAFT	CHKD	APPD
A		©		WAS (1) 8079-2-ADDED J1357-4				6668		CB		17



REAR VIEW

NOTES:

- USE ③ & ④ INSTEAD OF SUPPLIED HARDWARE
- MOUNT CONN. TO ADAPTER PLATES WITH HARDWARE SUPPLIED WITH CONN. (MALE GUIDE PIN TO 'A' OR '*I')

QTY.	REQ.	ITEM	PART NO.	DESCRIPTION	SYMBOL
1	14	JJ333-42-S-FS-2		42 PIN FEMALE CONN. INNER SHIELD	
1	13	LD8043-4		ADAPTER PLATE 42 PIN	
2	12	MS8005-1		COVER TOP & BTM	
16	11	SCBP-0440-BNS		MACH. SCREW	
16	10	SMI27D0440		STOP NUT	
2	9	JJ333-50-S-FS-2		50 PIN FEMALE CONN INNER SHIELD	
1	8	LD8043-3		ADAPTER PLATE 50 PIN (MS8079-6)	
1	7	LD8043-2		ADAPTER PLATE 50 PIN REF.(MS8079-6)	
2	6	JJ333-9-S-FS-2		9 PIN FEMALE CONN INNER SHIELD	
1	5	LD8043-1		ADAPTER PLATE 9 PIN(REF 8079-3)	
8	4	LWE06MRN		EXT. LOCKWASHER	
8	3	SCBP0632BNS		FLAT HEAD MACH SCREW	
1	2	MS8004		WRAPAROUND	
1	1	A8029		JACK FIELD	

LIST OF MATERIAL

UNLESS OTHERWISE SPECIFIED DIMENSIONS ARE IN INCHES AND INCLUDE CHEMICALLY APPLIED OR PLATED FINISHES	FINAL APPROVAL <i>[Signature]</i> DATE 7-20-68	THE TECHNICAL MATERIEL CORP. MAMARONECK, NEW YORK	
TOLERANCES ON DECIMALS .X ± .05 .XX ± .01 .XXX ± .005 FRACTIONS ± 1/64 ANGLES ± 0°-30'	MECH. DES. <i>[Signature]</i> DATE 2-1-68	JACK PNL. WRAPAROUND ASSY AJP-4 UNIT 13	
MATERIAL	ELECT. DES. <i>[Signature]</i> DATE 2-2-68	SIZE	CODE IDENT. NO. DWG NO. ISSUE
FINISH	CHECKED <i>[Signature]</i> DATE 2-2-68	D	82679 A8030 A
	DRAWN <i>[Signature]</i> DATE 2-2-68	SCALE	SHEET OF

QTY / UNIT	1	MODEL USED ON	13	ASS'Y NO.	
APPLICATION					
CODE					
NOTICE TO PERSONS RECEIVING THIS DRAWING					
THE TECHNICAL MATERIEL CORPORATION claims proprietary right in the material disclosed hereon. This drawing is issued in confidence for engineering information only and may not be reproduced or used to manufacture anything shown hereon without permission from THE TECHNICAL MATERIEL CORPORATION to the user. This drawing is loaned for mutual assistance and is subject to recall at any time.					