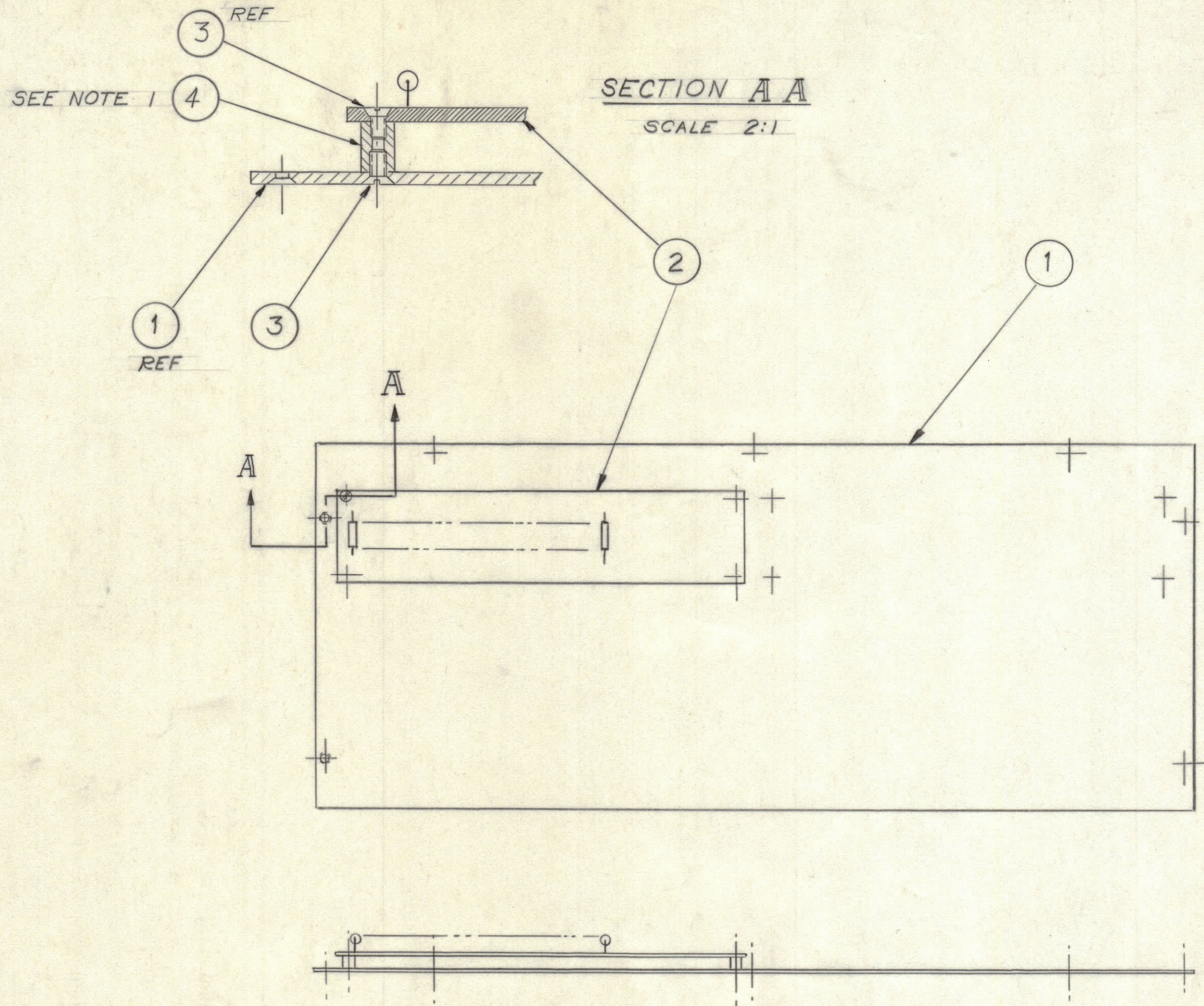


REVISIONS						
ZONE	LTR	DESCRIPTION	DATE	E.M.N.NO	DRAFT	CHKD APPD



NOTE: 1. BEFORE ASSY, C'SINK BOTH ENDS OF ITEM 4

QTY. REQ.	ITEM	PART NO.	DESCRIPTION	SYMBOL
4	4	TE0440PR46R	SPACER, INSUL.	
10	3	SCFP0440BN3	SCREW, FLAT HEAD	
1	2	A8005	ATTENUATOR CIR. BOARD, ASSY	
1	1	MS 8005-2	COVER-BOTTOM	

LIST OF MATERIAL

UNLESS OTHERWISE SPECIFIED DIMENSIONS ARE IN INCHES AND INCLUDE CHEMICALLY APPLIED OR PLATED FINISHES	FINAL APPROVAL <i>[Signature]</i>	DATE 1-27-68
TOLERANCES ON DECIMALS .X ± .05 .XX ± .01 .XXX ± .005	MECH. DES. R Di FATE	DATE 10-2-67
	ELECT. DES. R Di FATE	DATE 10-2-67
MATERIAL	CHECKED G. ORLANDI	DATE 1-2-68
	DRAWN Amuskv	DATE 9-30-67
FINISH		

THE TECHNICAL MATERIEL CORP. MAMARONECK, NEW YORK			
BOTTOM COVER, ASSY			
AJP-1			
SIZE	CODE IDENT. NO.	DWG NO.	ISSUE
C	82679	A8003	φ
SCALE	SHEET		OF

QTY / UNIT	MODEL USED ON	ASS'Y NO.
APPLICATION		
CODE		
NOTICE TO PERSONS RECEIVING THIS DRAWING THE TECHNICAL MATERIEL CORPORATION claims proprietary right in the material disclosed hereon. This drawing is issued in confidence for engineering information only and may not be reproduced or used to manufacture anything shown hereon without permission from THE TECHNICAL MATERIEL CORPORATION to the user. This drawing is loaned for mutual assistance and is subject to recall at any time.		