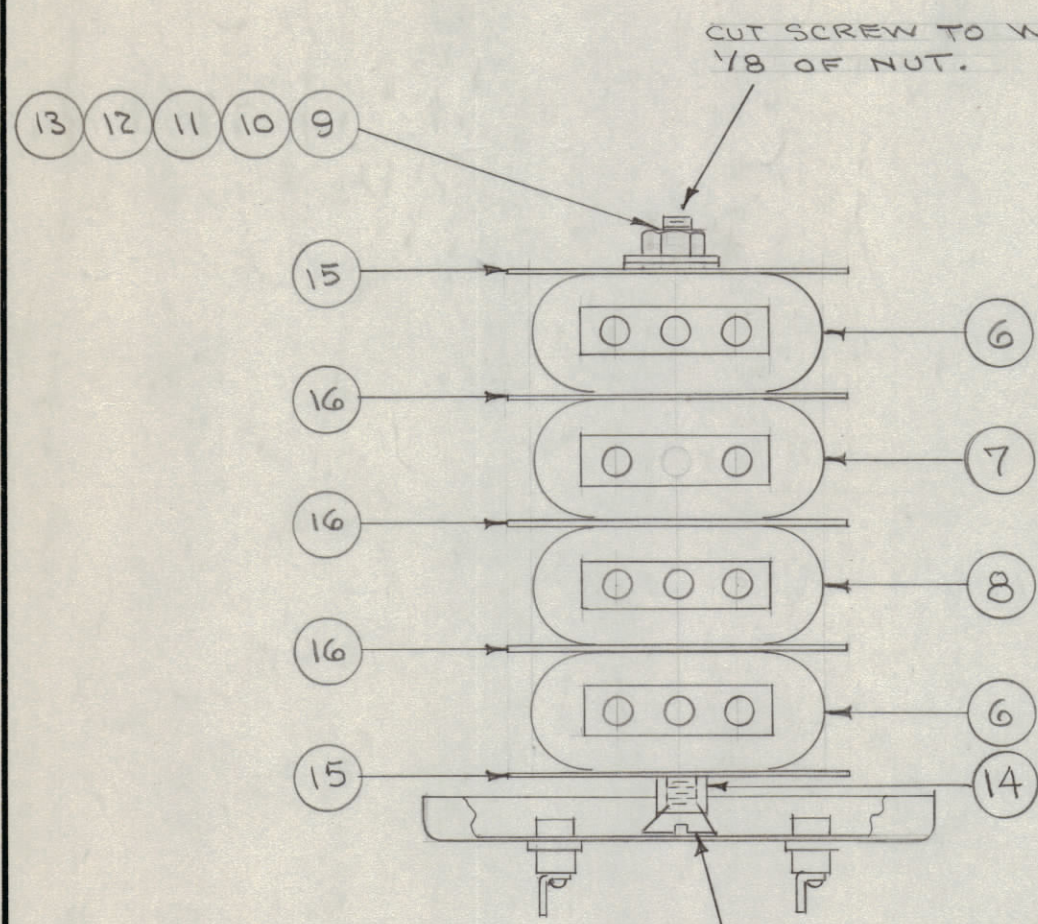


IF IT IS FOUND DESIRABLE TO CHANGE ANY TOLERANCE OR OTHER DETAIL SPECIFIED ON THIS DRAWING NOTIFY THE PURCHASER PROMPTLY.

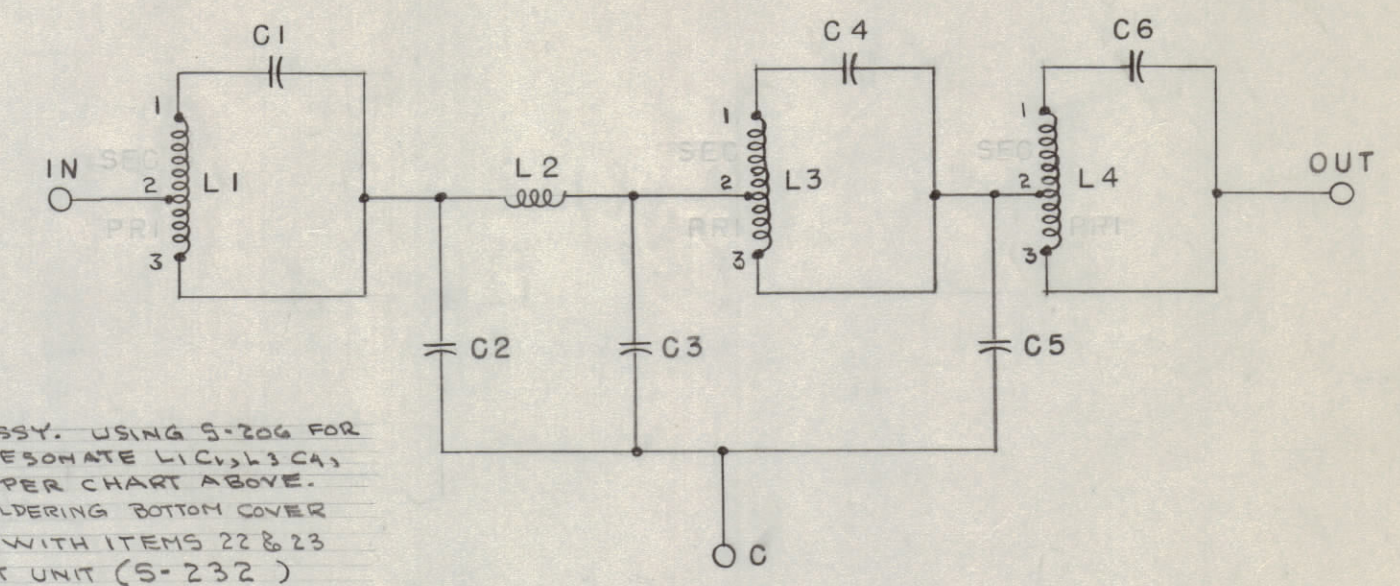
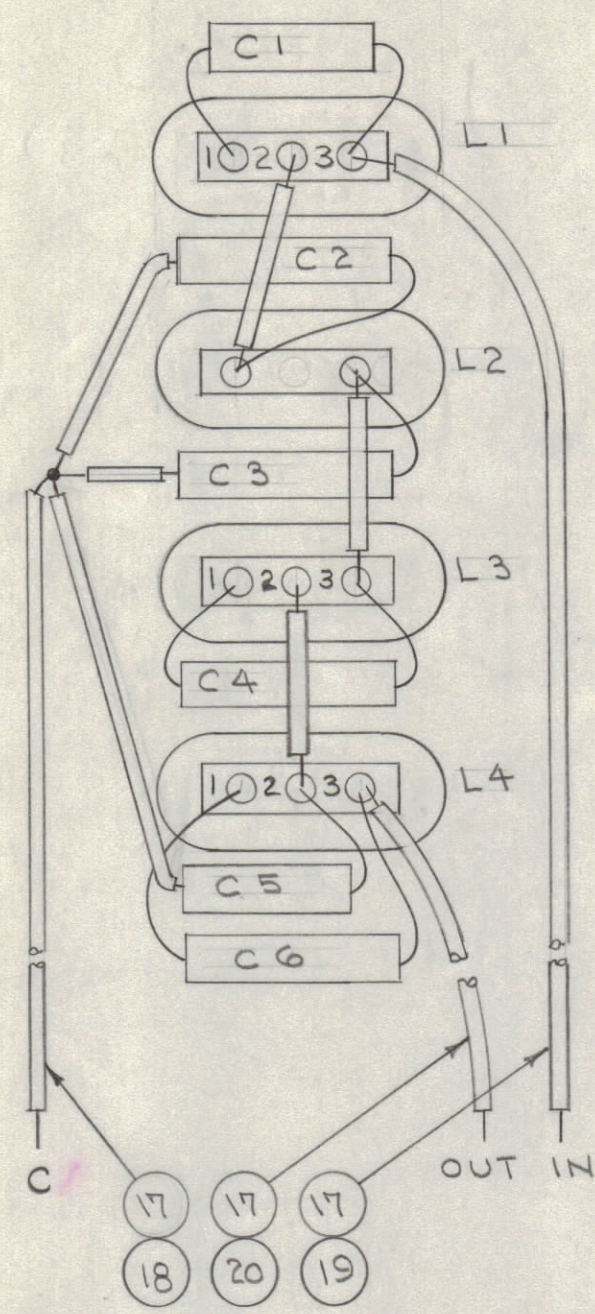
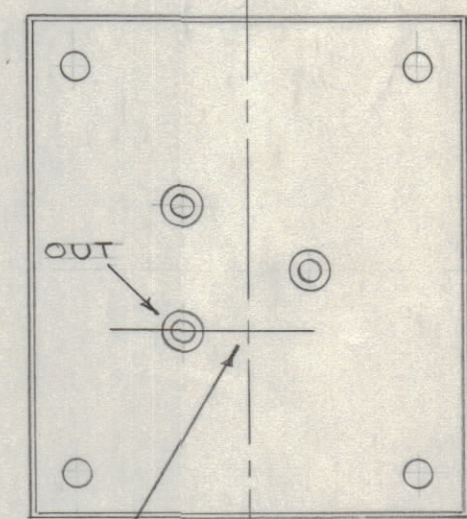
MAXIMUM ALLOWABLE TOLERANCES HAVE BEEN DETERMINED AND DEVIATIONS WILL BE CAUSE FOR REJECTION. REMOVE ALL BURRS AND SHARP EDGES

REFER TO S-206 FOR RESONANCE METHOD.

COMBINATION	L1 - C1	L3 - C4	L4 - C6
FREQUENCY	4390 ~	5910 ~	4390 ~



SOLDER HEAD OF SCREW TO BOTTOM OF CAN. SCREW MUST BE PERPENDICULAR TO BOTTOM.



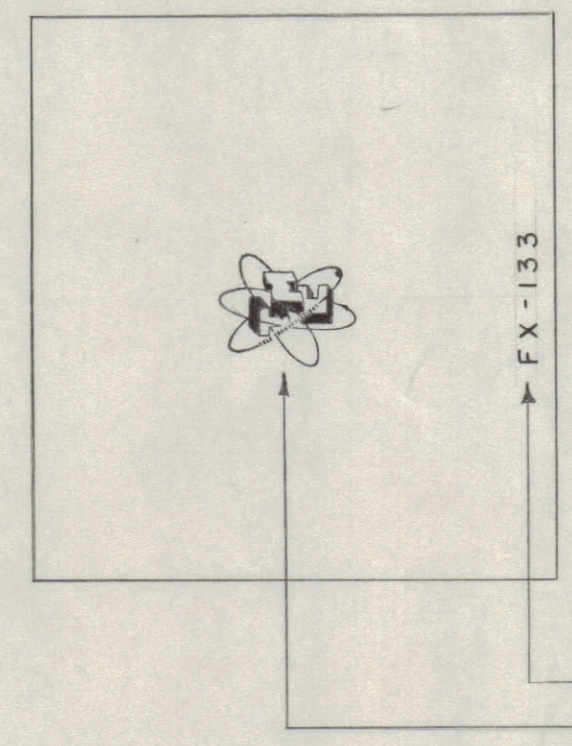
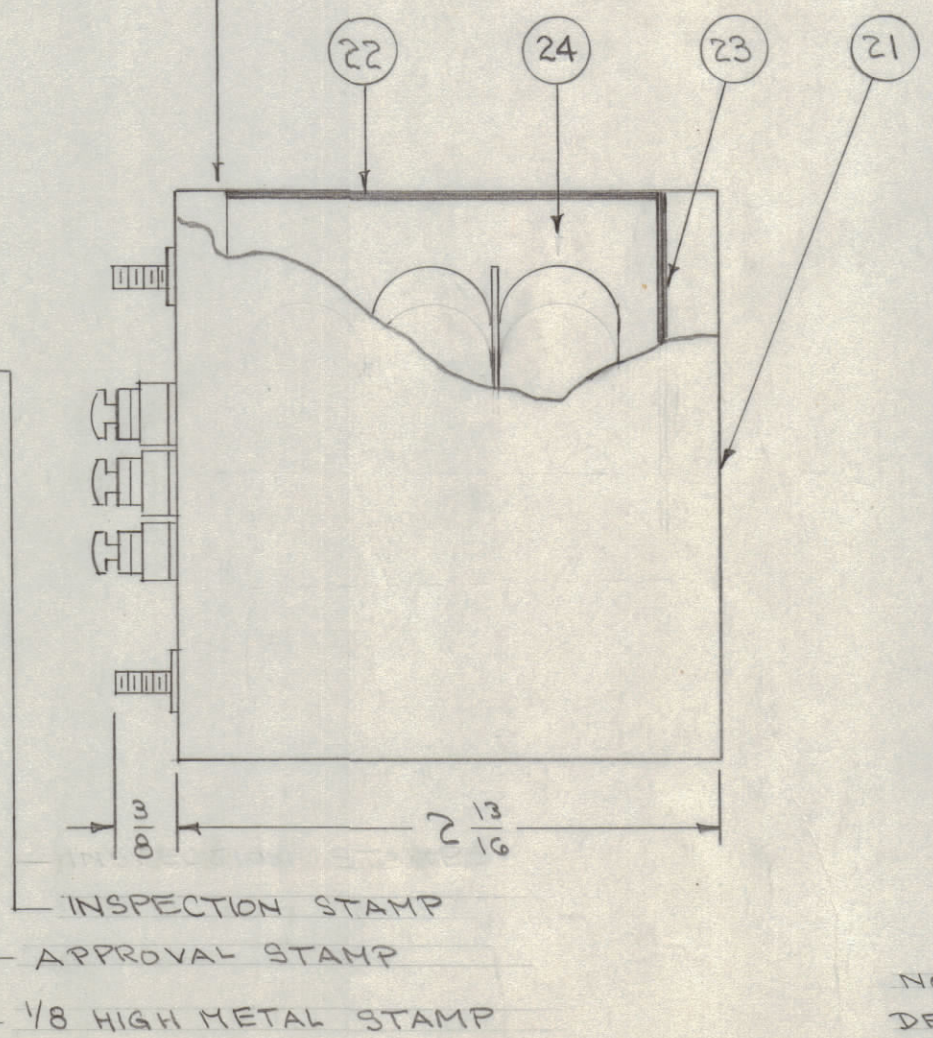
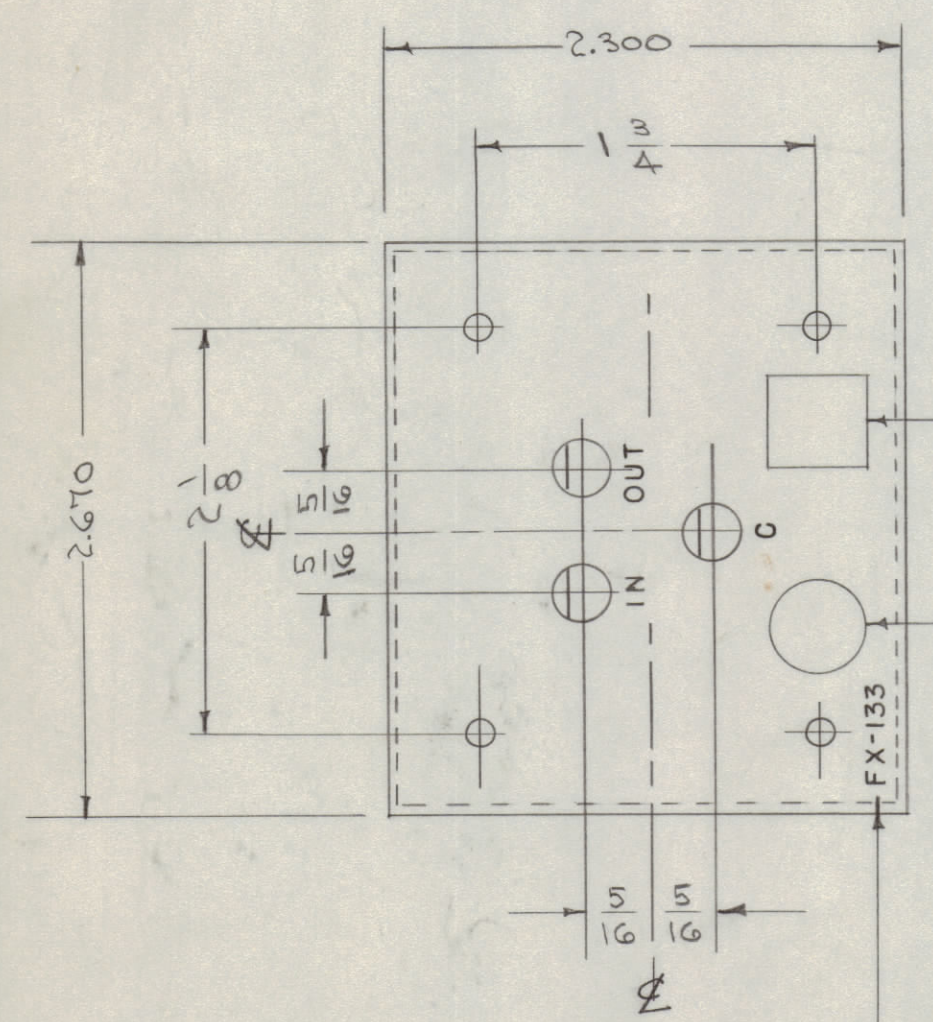
- 1-BEFORE ASSY. USING S-206 FOR METHOD, RESONATE L1, L3, C4, L4, C6 AS PER CHART ABOVE.
- 2-BEFORE SOLDERING BOTTOM COVER LINE CAN WITH ITEMS 22 & 23 AND TEST UNIT (S-232)
- 3-REMOVE ITEM 23 AND POUR COMPOUND TO WITHIN 1/4" OF TOP OF CAN. REPLACE ITEM 23.
- 4-TEST UNIT AGAIN (S-232)
- 5-FINISH SOLDERING COVERS.

X 25	BS-100	SOLDER, SOFT
X 24	GL-110	COMPOUND, POTTING
1 23	IM-129	INSULATION, PAPER
1 22	IM-144	" " "

A-886

SOLDER ALL AROUND TOP & BOTTOM OF CAN

ALL UNMARKED SLEEVING IS ITEM 18  
ALL UNMARKED JUMPERS ARE ITEMS 17 18



NOTE-FINISH  
DEGREASE  
S-241-AIR DRYING SMOOTH GRAY ENAMEL  
(DO NOT PAINT TERMINAL END)

1 21	BX-125	CASE & COVERS	
X 20	PX-104-3-.034	INSULATION, SLEEVING (RED)	
X 19	PX-104-2-.034	" " (YEL)	
X 18	PX-104-1-.034	" " (BLK.)	
X 17	WL-100-7	WIRE, BUSS BAR	
3 16	WA-110-2	WASHER, PAPER	
2 15	WA-110-1	" " "	
1 14	TE-117-1	STANDOFF, SPACER	
1 13	NTH0632BC8	NUT, HEX	
1 12	LWE06MRC	WASHER, LOCK	
1 11	FW06MRC	WASHER, FLAT	
X 10	PX-100-1-.166	INSULATION, SLEEVING	
1 9	SCFS0632BCAB	SCREW, MACHINE	
1 8	CL201-530-43R0	INDUCTOR, TOROIDAL	L3
1 7	CL200A53R80G		L2
2 6	CL201-530-16R2		L1, L4
1 5	CN108C10502G	CAPACITOR, FIXED	C5
1 4	CM35D152G		C4
1 3	CN108C13502G		C3
1 2	CN108C12002G		C2
2 1	CM35D272G		C1, C6

REQ. ITEM	PART NO.	DESCRIPTION	SYMBOL
/		THE TECHNICAL MATERIEL CORP. MAMARONECK, NEW YORK	
STOCK SIZE		FILTER, LOW PASS	
MATERIAL		FX-133	
TYPE & TEMPER		ORD. 11/17/54	KZ M.H.S.
HEAT TREAT. SPEC.		DRAWN	ELEC. DES. APP. MECH. DES. APP.
SEE NOTE		HEAT TREAT. SPEC.	HEAT TREAT. SPEC.
FINISH & SPEC. NO.		CHECKED	FINAL APPROVAL
		SUPERCEDES A-591	A-886

ISSUE	ITEM	CHANGED FROM	DATE	CN. NO.	DRAFTS	CHECKER	ENG. APP.
TOLERANCES		SCALE:					
ALL OTHERS	DEC. DIM. ±	DRILL, PUNCH, COMMERCIAL STOCK SIZES AND MANUFACTURERS TOLERANCES ARE NOT INCLUDED.					
	FRAC. DIM. ±						
	ANGULAR DIM. ±						

1	FX-133	PROJECT NO.	ASS'Y. NO.	DATE
REQ. PER UNIT	MODEL	PROJECT NO.	ASS'Y. NO.	DATE
USED ON				