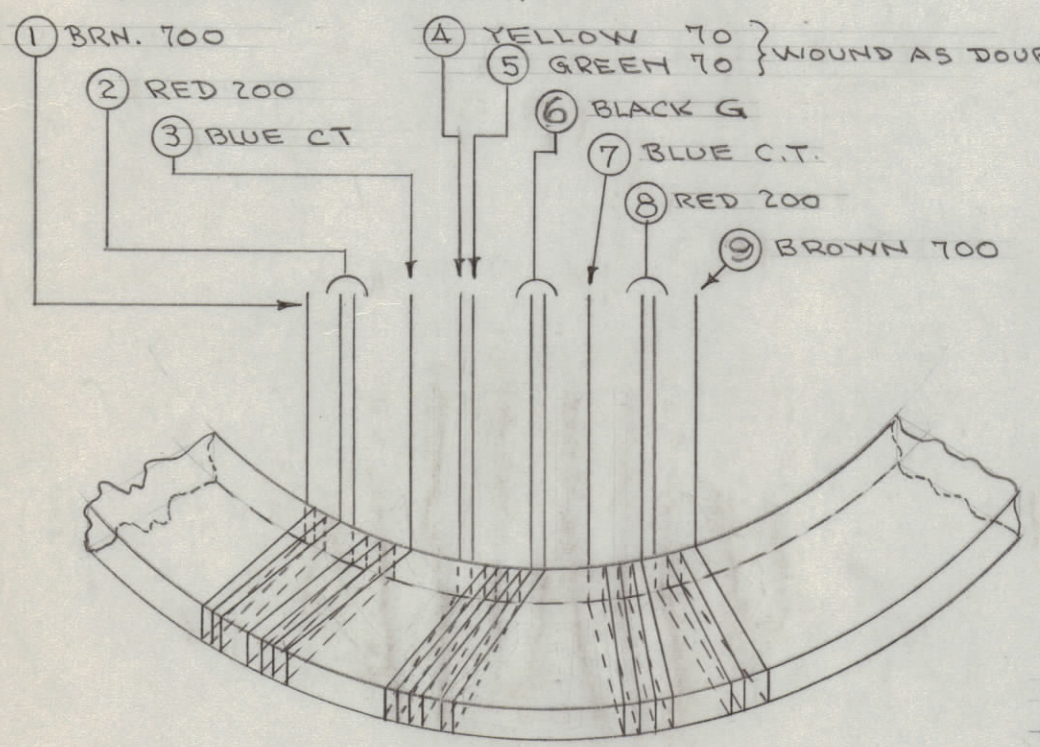
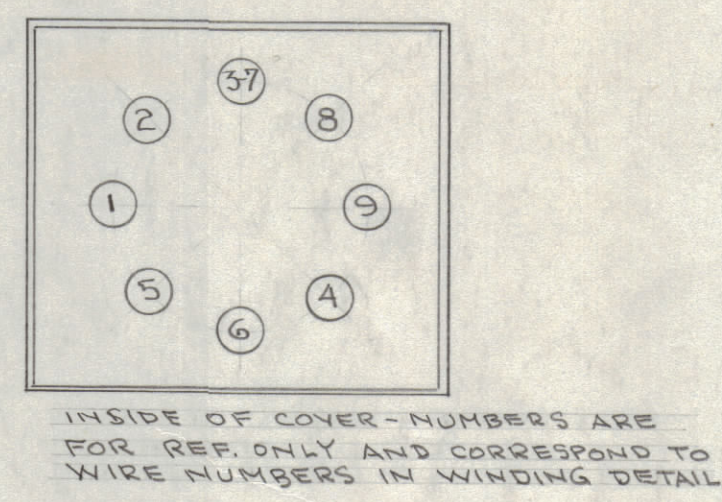
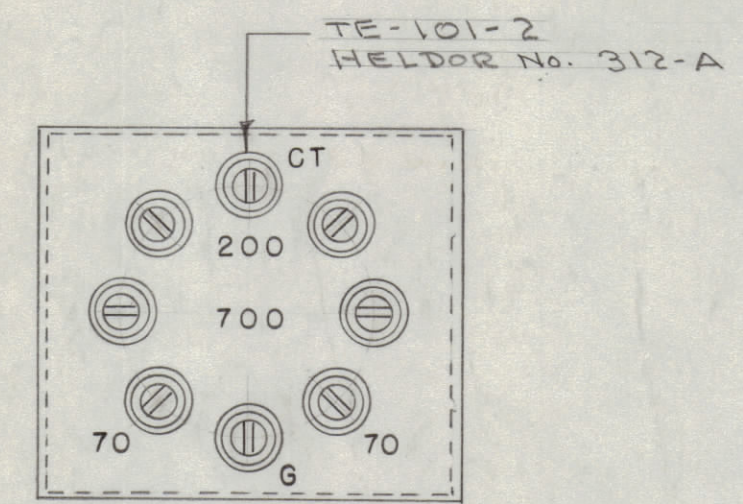
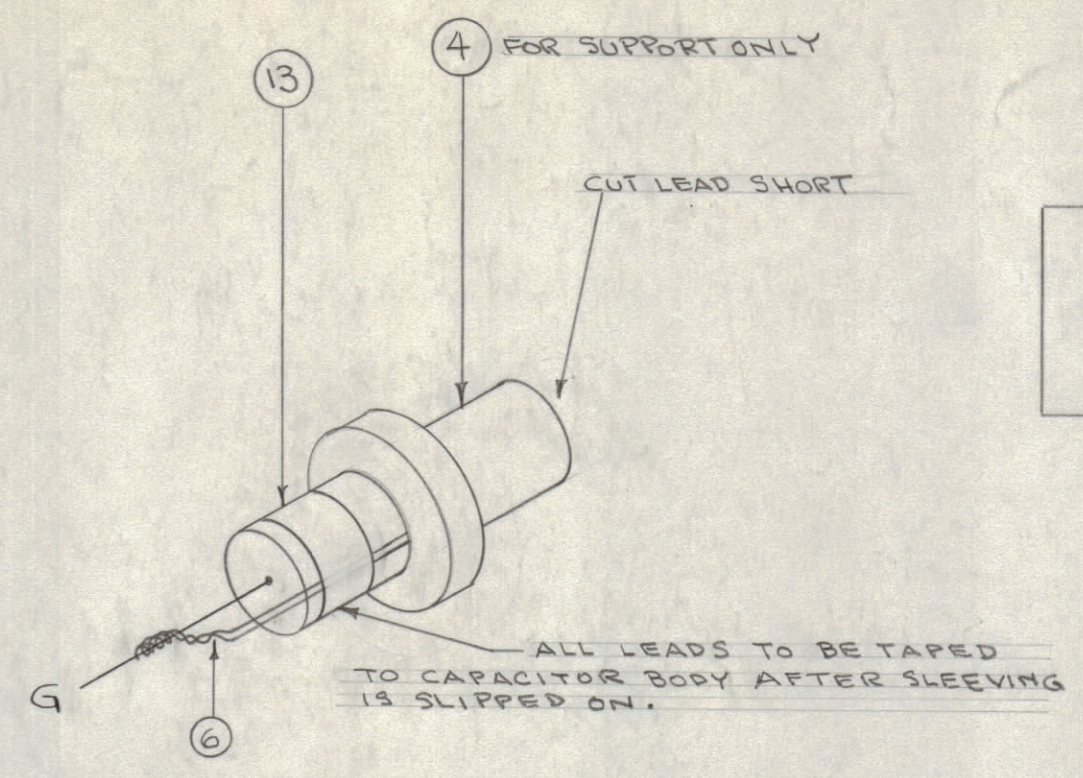
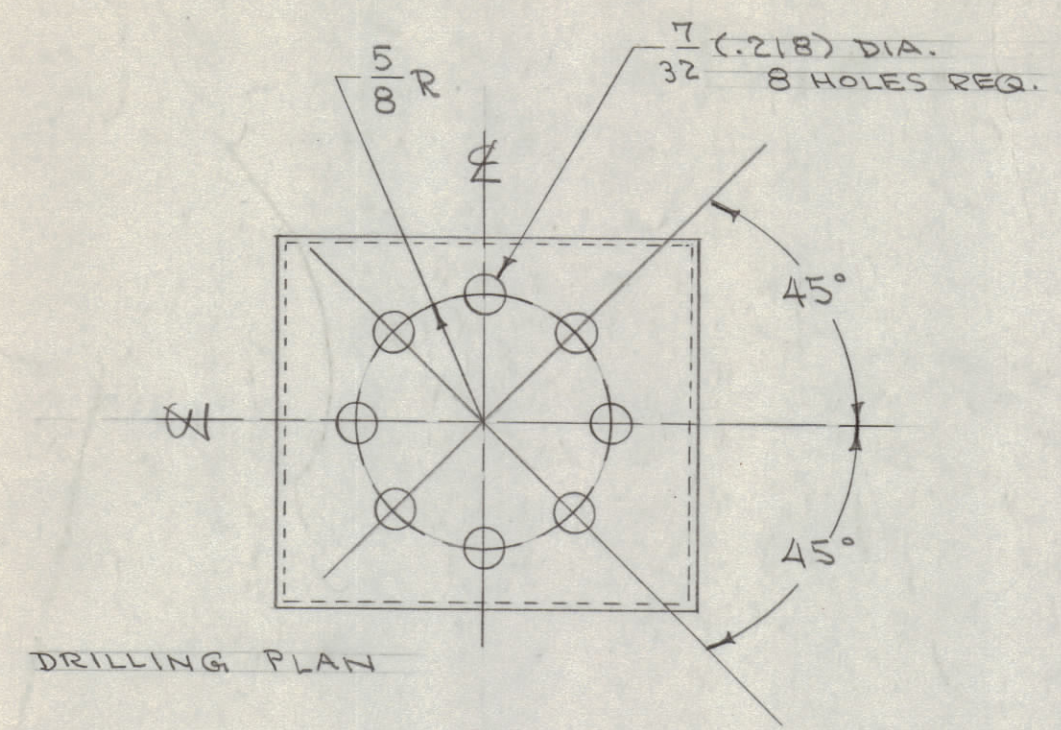


IF IT IS FOUND DESIRABLE TO CHANGE ANY TOLERANCE OR OTHER DETAIL SPECIFIED ON THIS DRAWING NOTIFY THE PURCHASER PROMPTLY.

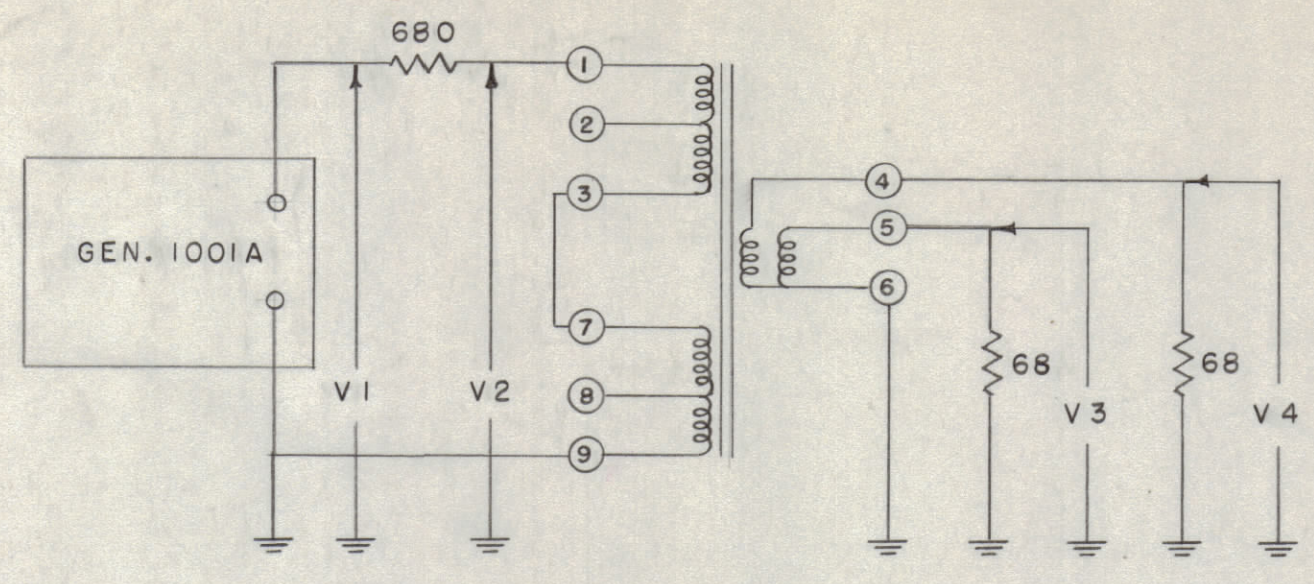
MAXIMUM ALLOWABLE TOLERANCES HAVE BEEN DETERMINED AND DEVIATIONS WILL BE CAUSE FOR REJECTION. REMOVE ALL BURRS AND SHARP EDGES



- 1-9 700Ω BAL.
- 2-8 200Ω BAL.
- 3-7 C.T.
- 4-6 70Ω UNBAL.
- 5-6 70Ω UNBAL.

NOTE - FINISH  
DEGREASE  
S-114 - ZINC CHROMATE PRIMER  
S-115 - SMOOTH GREY ENAMEL  
OR - PRIME & PAINT TO CUSTOMERS SPECIFICATION.

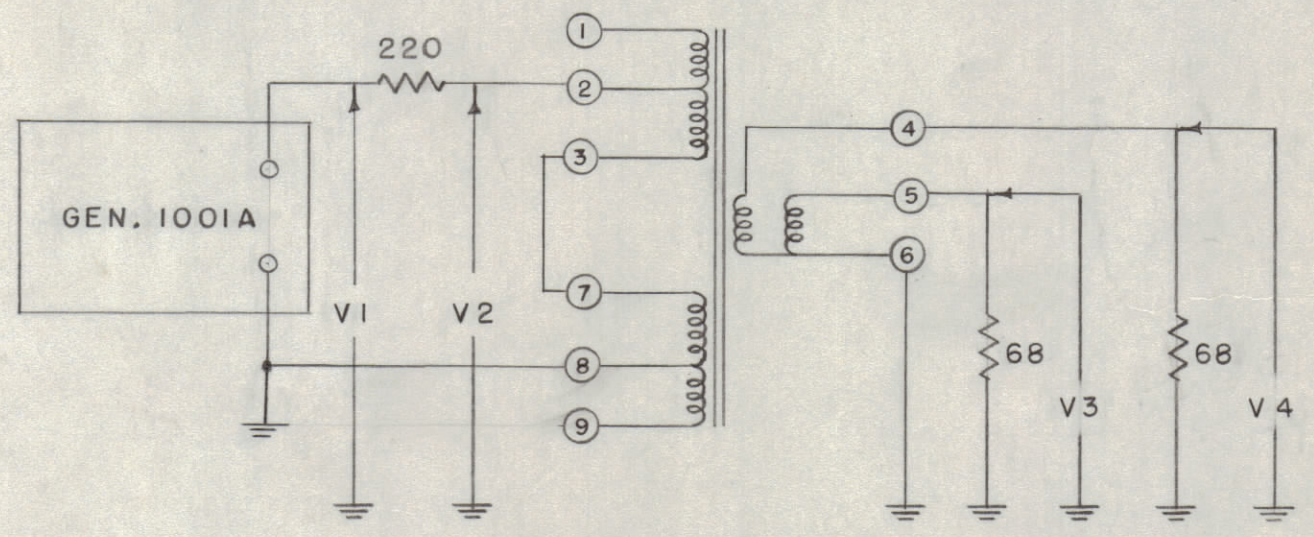
TEST 1 - 700Ω TERMINATION



FREQ MC	* RF VOLTS			
	V1	V2	V3	V4
2	1.5	.64	.1	.1
8	1.5	.7	.1	.1
32	1.5	.8	.08	.08

\* HEATHKIT VTVM

TEST 2 - 200Ω TERMINATION



FREQ MC	* RF VOLTS			
	V1	V2	V3	V4
2	1.0	.46	.14	.14
8	1.0	.5	.14	.14
32	1.0	.66	.1	.1

\* HEATHKIT VTVM

A-885

REQ.	ITEM	PART NO.	DESCRIPTION	SYMBOL
X	13	TA-100-2	TAPE	
X	12	BS-100	SOLDER, SOFT	
2 1/2"	11	PX-10A-6-.022	INSULATION, SLEEVING (BLUE)	
2 1/2"	10	-5-		(BRN)
1/8"	9	-4-		(GRN)
2 1/2"	8	-3-		(RED)
2 1/2"	7	-2-		(YEL.)
1/8"	6	-1-		(BLK.)
X	5	GL-106	COMPOUND, PLASTIC	
1	4	CN-100-17	CAPACITOR, SUPPORT	
1	3	BX-124	CASE & COVERS	
X	2	WI-102-9	WIRE, MAGNET	
1	1	CI-104	CORE, TOROIDAL	

NOT TO BE RELEASED  
W/O AUTHORIZATION  
AUTH. BY: \_\_\_\_\_  
DATE: \_\_\_\_\_

ISSUE	ITEM	CHANGED FROM	DATE	CN. NO.	DRAFTS	CHECKER	ENG. APP.
TOLERANCES							
DEC. DIM. ±				SCALE:			
FRAC. DIM. ±				DRILL, PUNCH, COMMERCIAL STOCK			
ANGULAR DIM. ±				SIZES AND MANUFACTURERS			
TOLERANCES ARE NOT INCLUDED.							

REQ. PER UNIT	MODEL	PROJECT NO.	ASS'Y. NO.	DATE
1	TR-102	342		11-16-54

REQ.	ITEM	PART NO.	DESCRIPTION	SYMBOL
THE TECHNICAL MATERIEL CORP. MAMARONECK, NEW YORK				
TRANSFORMER, ANT. COUPLER				
TR-102				
TYPE & TEMPER		C.D.D. 11-16-54	AMB	M.H.S.
		DRAWN	ELEC. DES. APP.	MECH. DES. APP.
		11/16/54	AMB	W.D.
HEAT TREAT. SPEC.		CHECKED	FINAL APPROVAL	
SEE NOTE		A-885		
FINISH & SPEC. NO.				