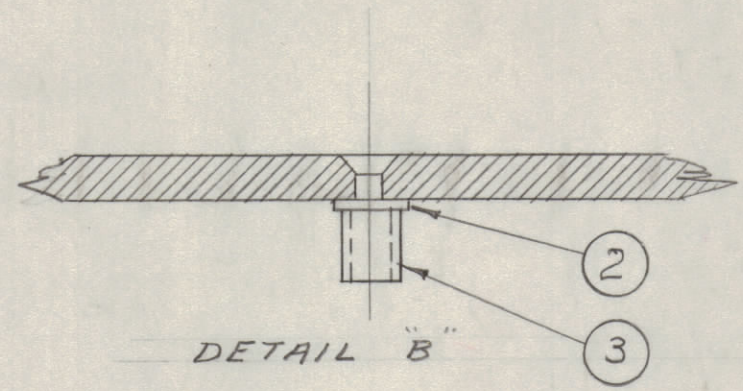
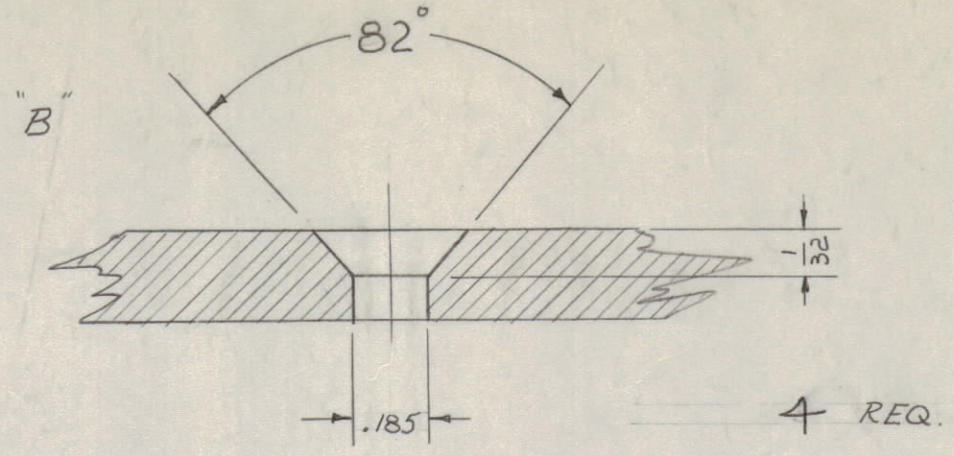
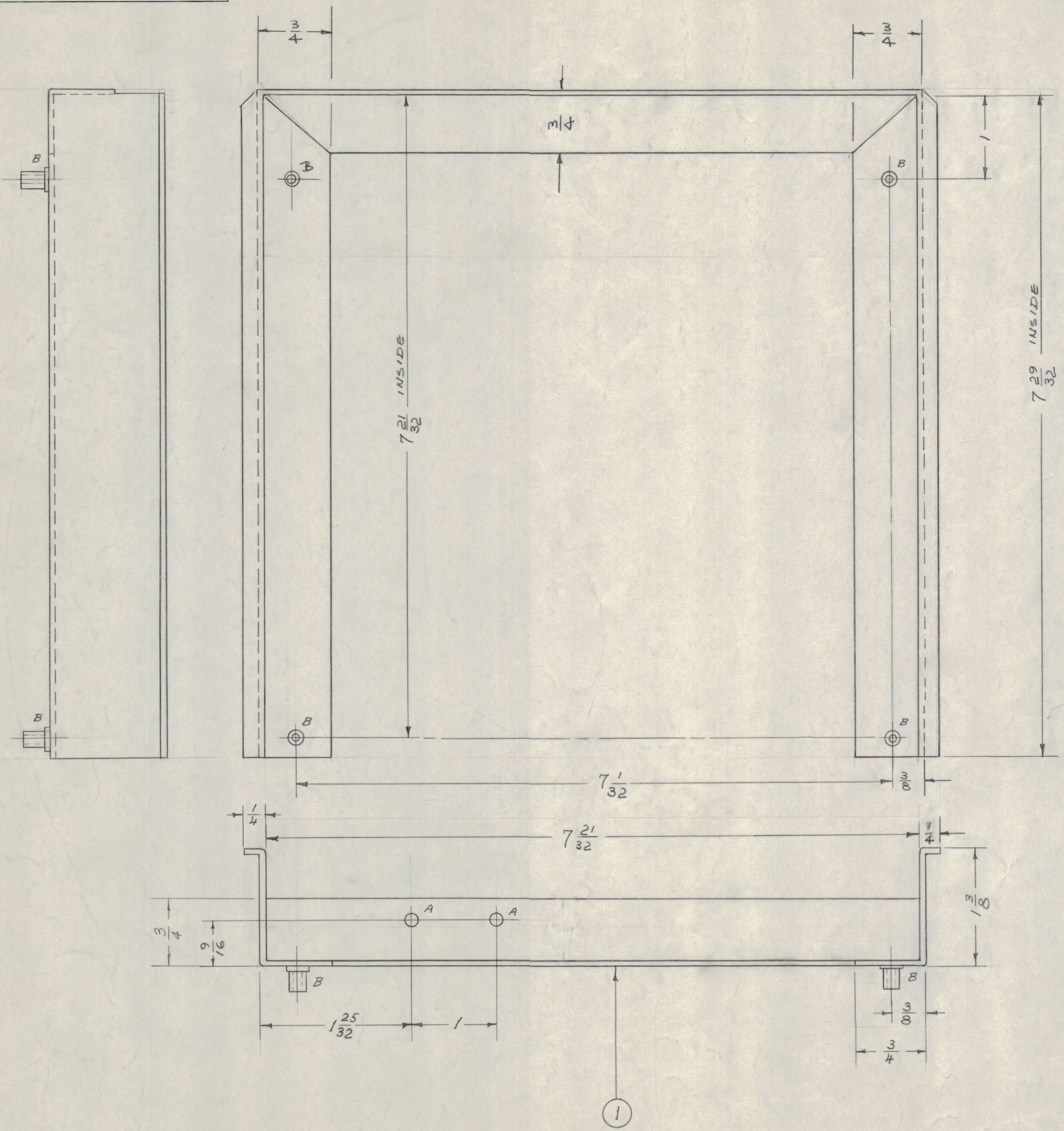


IF IT IS FOUND DESIRABLE TO CHANGE ANY TOLERANCE OR OTHER DETAIL SPECIFIED ON THIS DRAWING NOTIFY THE PURCHASER PROMPTLY.

MAXIMUM ALLOWABLE TOLERANCES HAVE BEEN DETERMINED AND DEVIATIONS WILL BE CAUSE FOR REJECTION. REMOVE ALL BURRS AND SHARP EDGES



- A- 1/64 (.1719) D. 2 REQ.
- B- #13 (.185) D 4 REQ.

A-884 C

BLANK SIZE  
2 3/16 X 2 1/8

C	1	TEMPER & FINISH ADDED	5-28-53	9101				
B	1	ITEM 3 WAS 3 REQ	9/21/54	1134				
A	1	ITEM 3 WAS TE-108-2	11/14/54	1				
ISSUE	ITEM	CHANGED FROM	DATE	CN. NO.	DRAFTS	CHECKER	ENG. APP.	
TOLERANCES			SCALE:					
ALL OTHERS	DEC. DIM. ±	FRAC. DIM. ±	ANGULAR DIM. ±	DRILL, PUNCH, COMMERCIAL STOCK SIZES AND MANUFACTURERS TOLERANCES ARE NOT INCLUDED.				

2	FFR-DPH	333		11-12-54
1	FFR-DP	104		11-12-54
REQ PER UNIT	MODEL	PROJECT NO.	ASS'Y. NO.	DATE

4	3	TE-108-1	STAND-OFF, RIVET TYPE	
4	2	FW10MRC	WASHER, FLAT	
1	1	MS-580	PAN (NO DRAWING)	
REQ. ITEM	PART NO.	DESCRIPTION		SYMBOL
.064		THE TECHNICAL MATERIEL CORP.		
ALUMINUM		MAMARONECK, NEW YORK		
MATERIAL		PAN, ASSY.		
5052-H32		MODEL FFR-DPH		
TYPE & TEMPER		PA 11-12-54	M.H.S.	
HEAT TREAT. SPEC.		JA 11/15/54	A.J.J.	WJ
FINISH & SPEC. NO.		S404-YELLOW IRIDITE		
				A-884 C