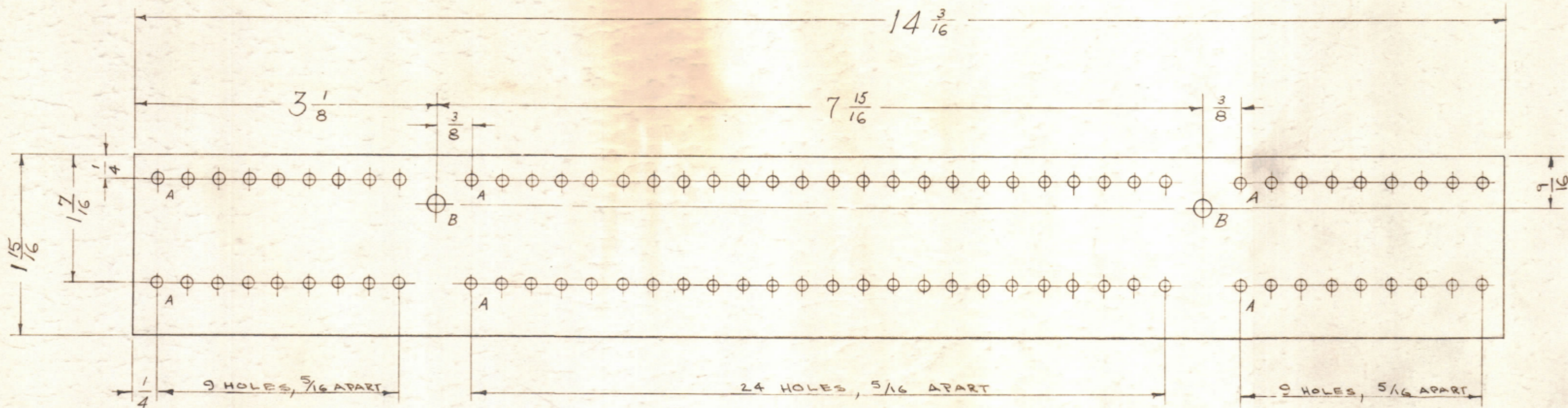
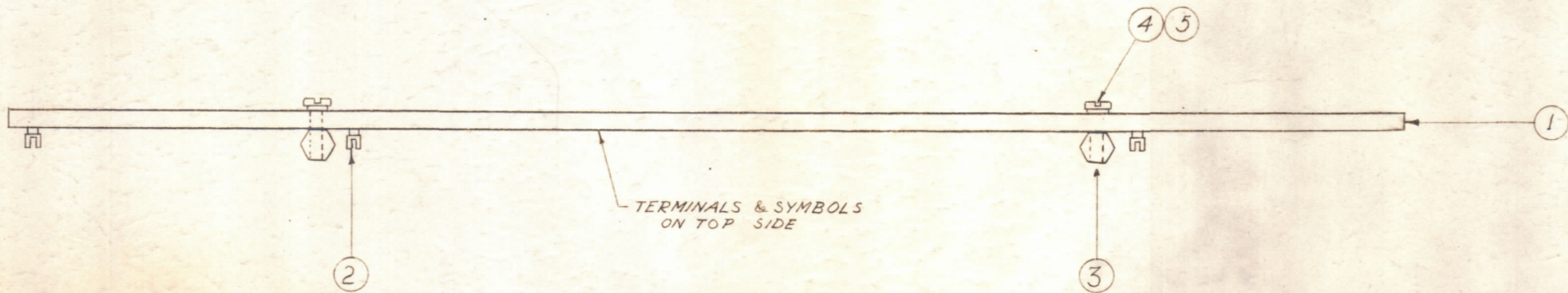


IF IT IS FOUND DESIRABLE TO CHANGE ANY TOLERANCE OR OTHER DETAIL SPECIFIED ON THIS DRAWING NOTIFY THE PURCHASER PROMPTLY.

MAXIMUM ALLOWABLE TOLERANCES HAVE BEEN DETERMINED AND DEVIATIONS WILL BE CAUSE FOR REJECTION. REMOVE ALL BURRS AND SHARP EDGES

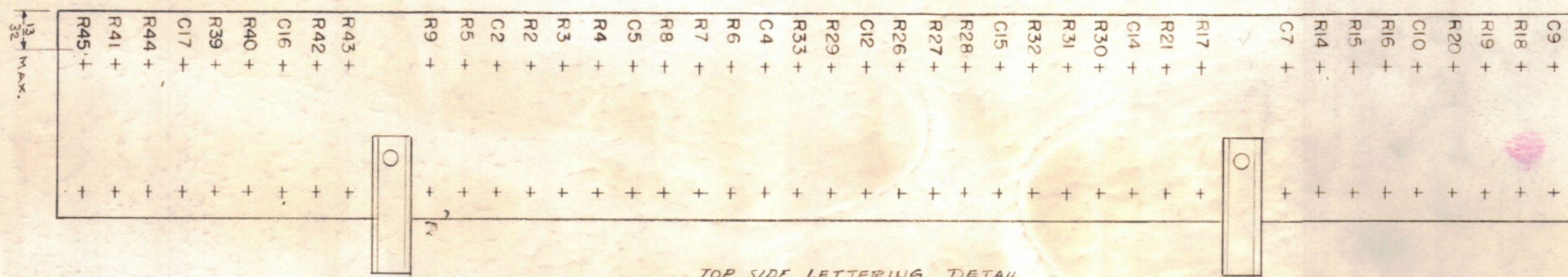


A = 2.9 mm DRILL 84 HOLES  
 B = 1/64 (.0156) D. 2 HOLES



TERMINALS & SYMBOLS ON TOP SIDE

A-880 B



TOP SIDE LETTERING DETAIL  
 (LETTERING 1/8 HIGH)

NOTE:  
 APPLY FUNGUS RESISTANT VARNISH (S-113) AFTER LETTERING & BEFORE STAKING TERMINALS

X	G	S-113	FUNGUS RESISTANT VARNISH
2	5	SCBS0632806	SCREW, MACHINE
2	4	LWEOGMRC	WASHER, LOCK
2	3	MS-398	TERM. BD., MOUNTING
84	2	TE-109-3	TER., TURRET
1	1	PX-245	TER. BOARD (N.D.) SEE A-880

REQ. ITEM	PART NO.	DESCRIPTION	SYMBOL
1/8		THE TECHNICAL MATERIEL CORP. MAMARONECK, NEW YORK	
PHENOLIC		MAIN TERMINAL BD. ASSEMBLY	
XXXXP		MODEL RSC-2	
TYPE & TEMPER		R.B. 11-5-54	KZ
HEAT TREAT. SPEC.		11/5/54	A.J.J.
FINISH & SPEC. NO.		FINAL APPROVAL	
SEE NOTE		A-880 B	

B	1	MOUNTING MS-398 WAS SOURCE	11/13/54	2	HQ	16	1/16
A	1	9 HOLES WERE B, TYPE ERROR	11/15/54	1	AGE	16	1/16
ISSUE ITEM	CHANGED FROM	DATE	CN. NO.	DRAFTS	CHECKER	ENG. APP.	
TOLERANCES		SCALE:					
ALL OTHERS	DEC. DIM. ± FRAC. DIM. ± ANGULAR DIM. ±	DRILL PUNCH, COMMERCIAL STOCK SIZES AND MANUFACTURERS TOLERANCES ARE NOT INCLUDED.					

1	RSC-2	170	A-887	11-5-54
REQ. PER. UNIT	MODEL	PROJECT NO.	ASS'Y. NO.	DATE
USED ON				